

REVISIONS					
REV	DATE	DESCRIPTION	BY	CHK	APPV
B2	04DEC2018	REVISD ECR-18-011775	TS	HY	

-1, -3: AS SHOWN  
 -1, -3: 本図

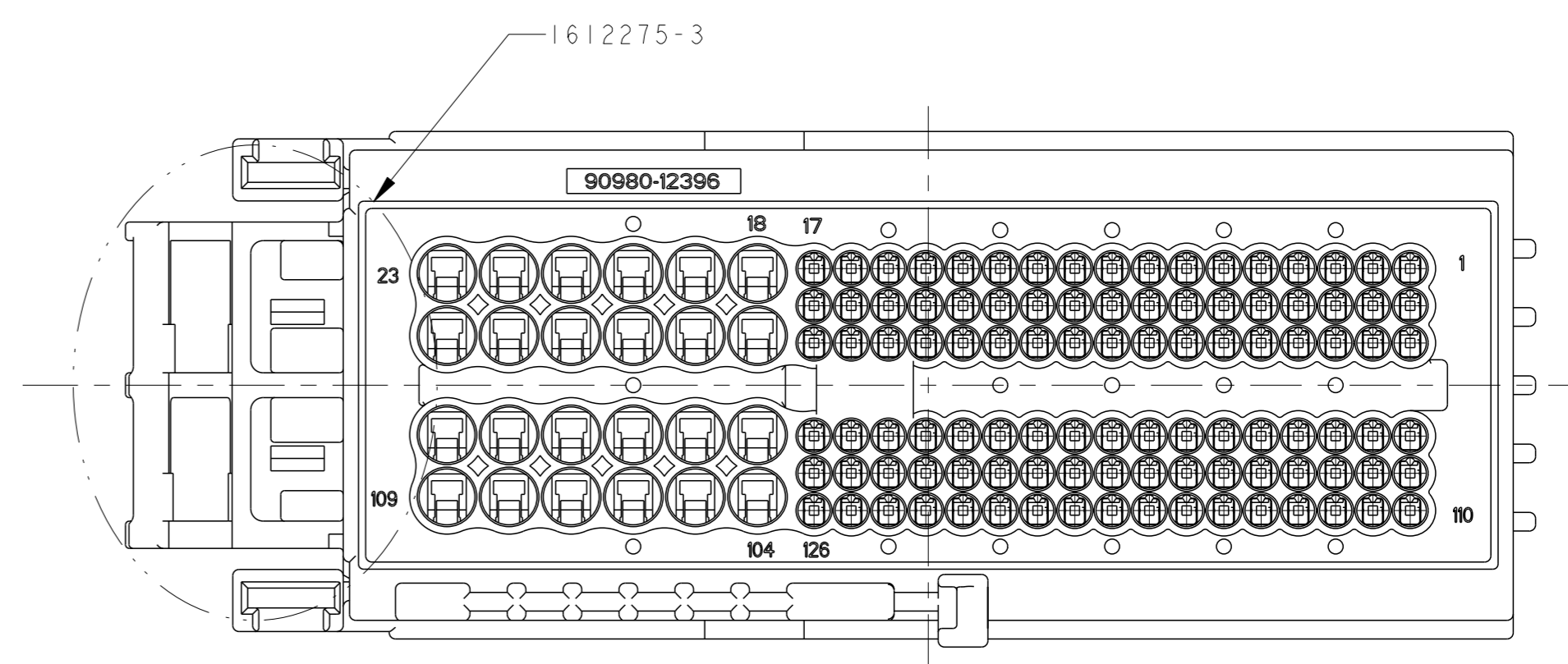
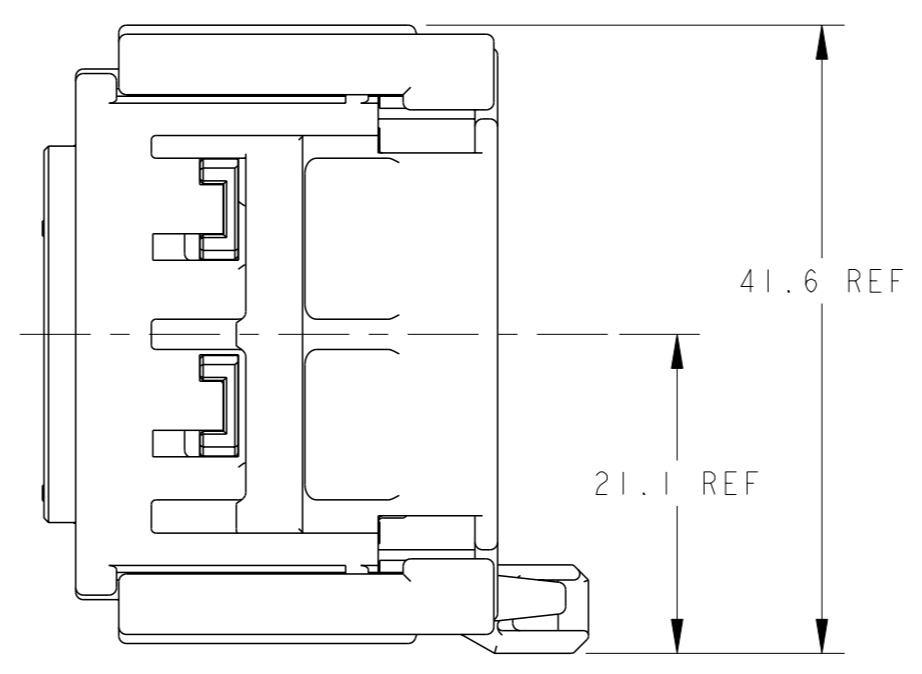
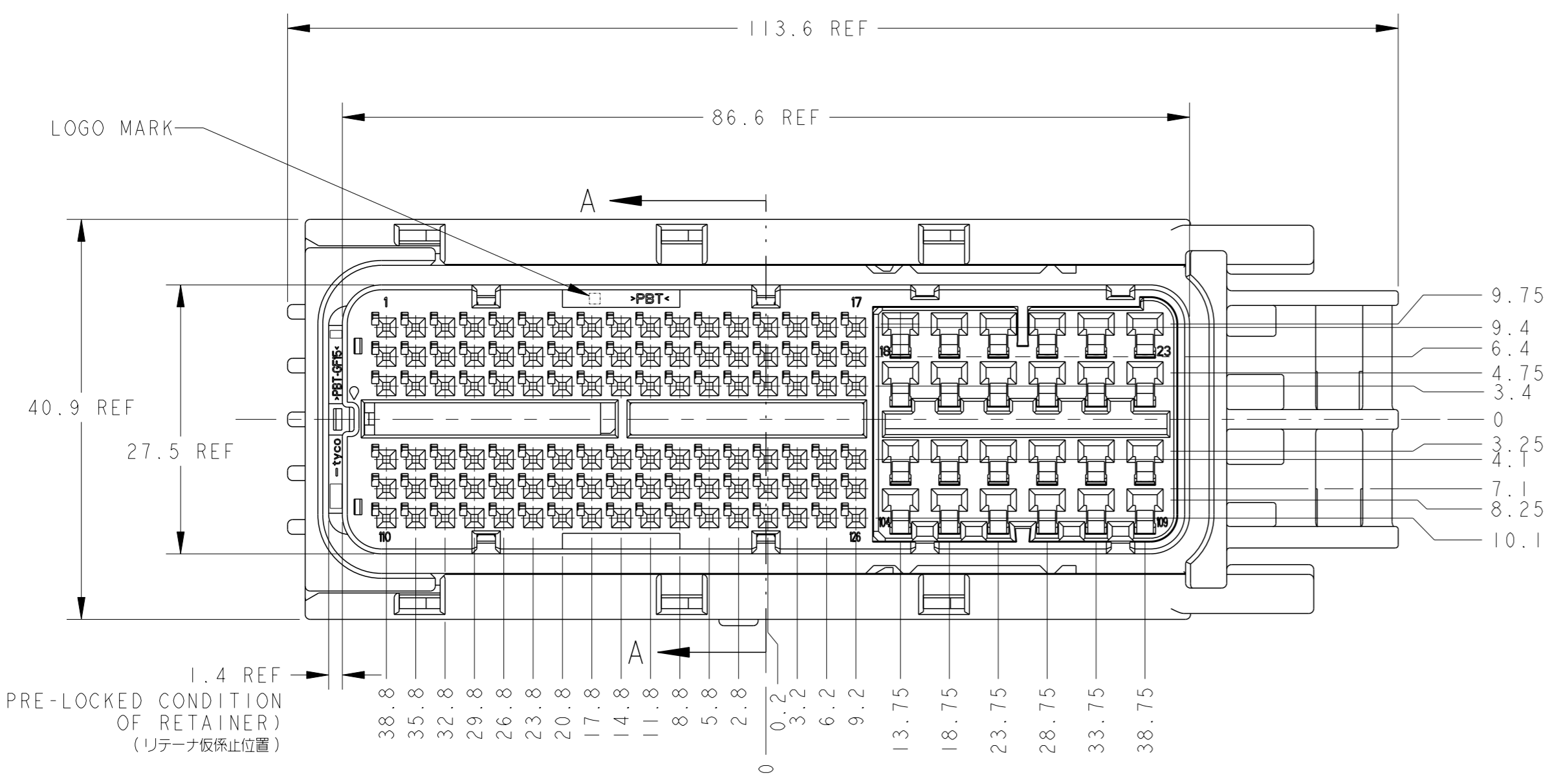
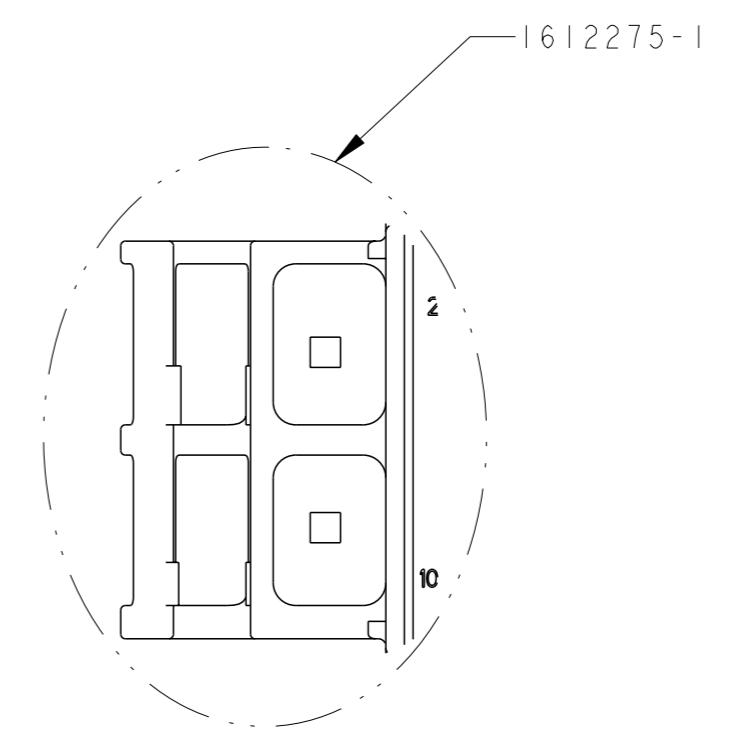
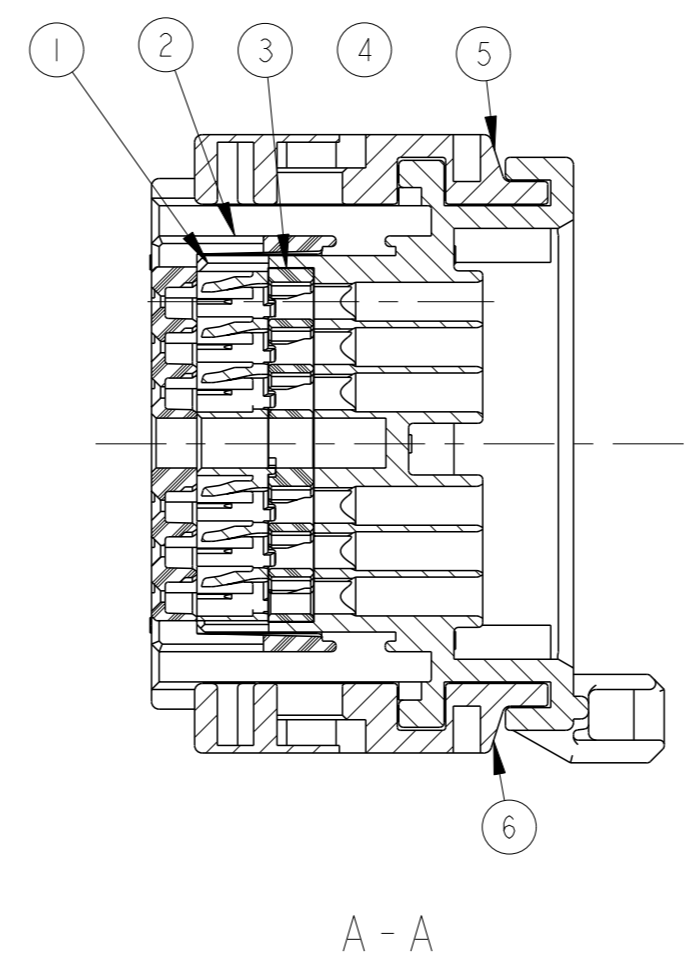
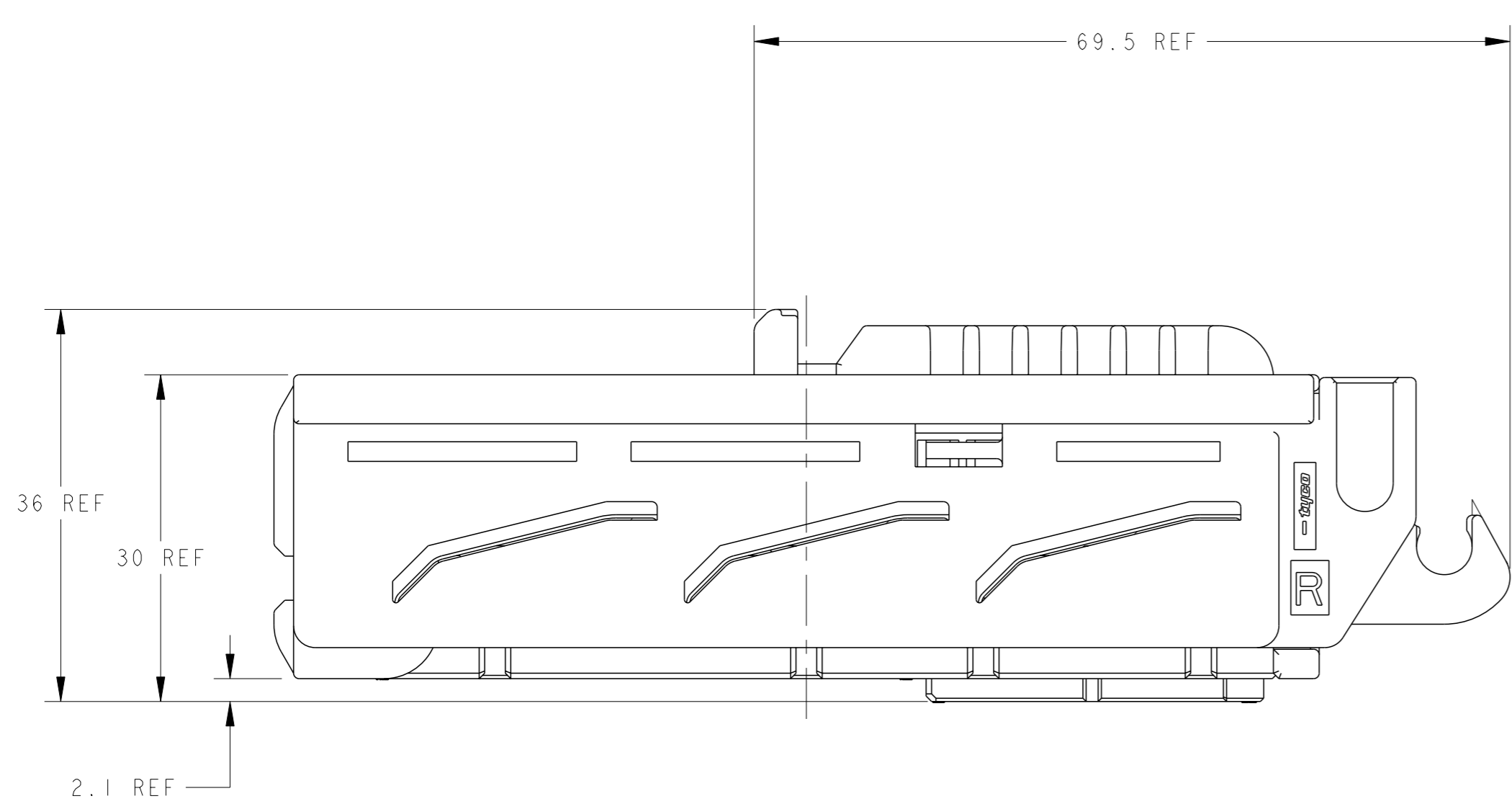


TABLE - I	OBSOLETE		OBSOLETE		OUTER 外装	PACKING STYLE 梱包形態		
	PAPER BOX ダンボール箱	PAPER BOX ダンボール箱	PAPER BOX ダンボール箱	PAPER BOX ダンボール箱		INNER 内装		
I	I	I	I	I	BLACK	PBT	SLIDER-L	6
I	I	I	I	I	BLACK	PBT	SLIDER-R	5
I	I	I	I	I	REDDISH BROWN	SILICONE	SEAL RING	4
I	—/—	I	—/—	I	LIGHT GRAY	PBT	RETAINER 89POS	3
—/—	I	—/—	I	NATURAL	RETAINER 126POS			
I	I	I	I	I	BLACK	PBT	FRONT CAV	2
I	—/—	—/—	—/—	—/—	BLACK	PBT	PLUG HSG 89POS FOR CLIP	1
—/—	I	—/—	—/—	PLUG HSG 126POS FOR CLIP				
—/—	—/—	I	—/—	PLUG HSG 89POS				
—/—	—/—	—/—	I	PLUG HSG 126POS				
1612275-4	1612275-3	1612275-2	1612275-1	COLOR	MATERIAL	NAME	ITEM NO.	
89POS	126POS	89POS	126POS	AVAILABLE CAVITY POS 使用可能キャビティ数				
69 g	69 g	70 g	70 g	NET WEIGHT 質量				

- MATING CONNECTOR IS(P/N):  
 1612275-1/-3(126POS):1612272(186POS)  
 1612275-2/-4(89POS):1717313(149POS)
- HANDLING OF THIS PART SHOULD FOLLOW INSTRUCTION SHEET NO.411-78084.
- COMPONENTS OF THIS PART;SEE TABLE-1.
- THIS PRODUCT IS SHIPPED WITH RETAINER PRE-LOCKED POSITION.
- ASSEMBLED BY CUSTOMER.
- LEVER P/N FOR SUPPLEMENT(P/N):1612281
- PLEASE USE A WIRE COVER, WHEN YOU CANNOT SECURE THE WORKING SPACE BETWEEN A LEVER AND AN ELECTRIC WIRE.
- 1 AND -2 ARE THE CLIP NON-CORRESPONDENCES.

- 嵌合相手品番(P/N):  
 1612275-1/-3(126POS):1612272(186POS)  
 1612275-2/-4(89POS):1717313(149POS)
- 本製品の取扱は取扱説明書NO.411-78084に従うこと
- 本製品の構成部品:TABLE-1参照
- リテーナは密着状態で出荷される。
- レバーは顧客にて組立てられる。
- 補給用レバー品番(P/N):1612281
- レバーと電線の隙間(作業スペース)が確保出来ない時はカバーを使用下さい。
- 1,-2は、フリップ非対応です。

THIS DRAWING IS A CONTROLLED DOCUMENT.

DIMENSIONS: 単位: mm

TOLERANCES UNLESS OTHERWISE SPECIFIED:  
 寸法公差: ±0.3

MATERIAL: SEE TABLE

FINISH: SEE TABLE

OWN: S. SHISHIKURA Z2MAR06  
 CHK: K. SAKAMAKI Z2MAR06  
 APVD: S. ISOHATA Z2MAR06

PRODUCT SPEC: 108-5891  
 APPLICATION SPEC: 114-5336

WEIGHT: SEE TABLE

CUSTOMER DRAWING

SIZE: A1  
 CAGE CODE: 100779  
 DRAWING NO: 1612275

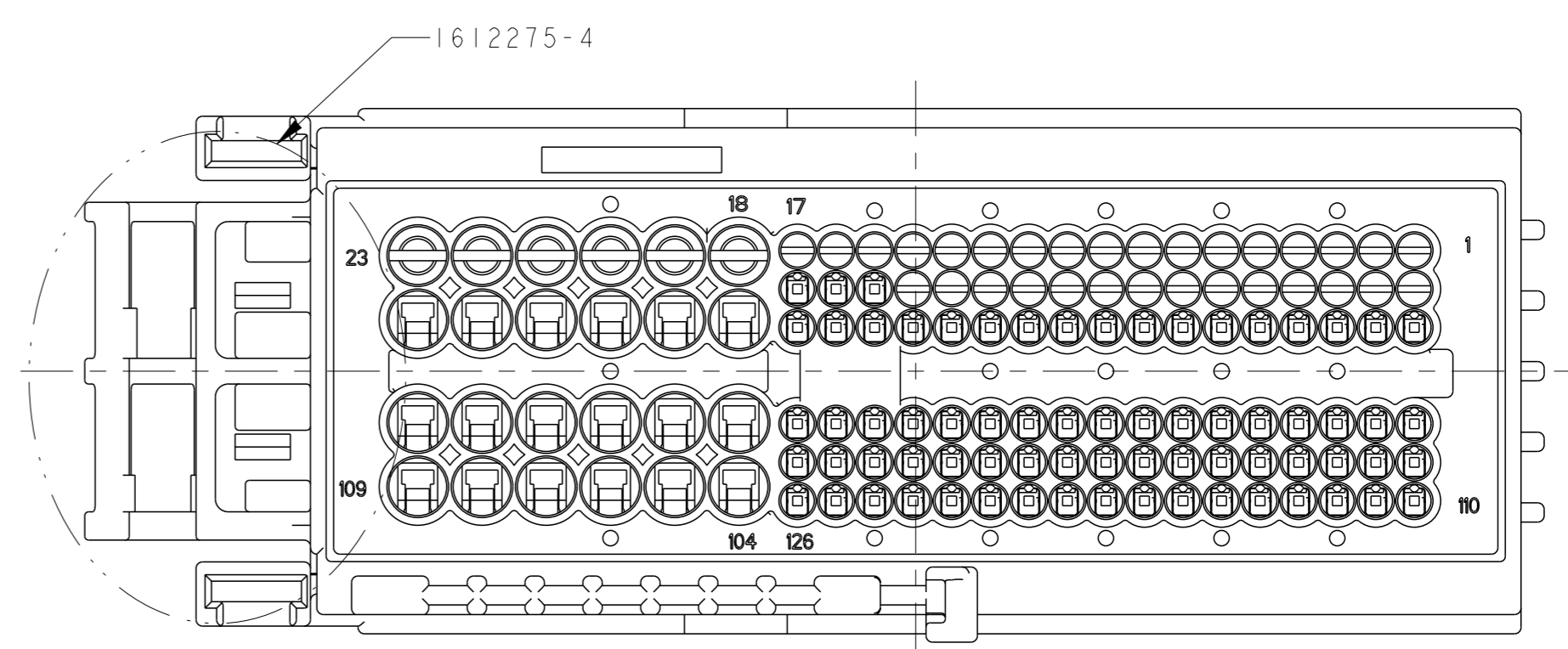
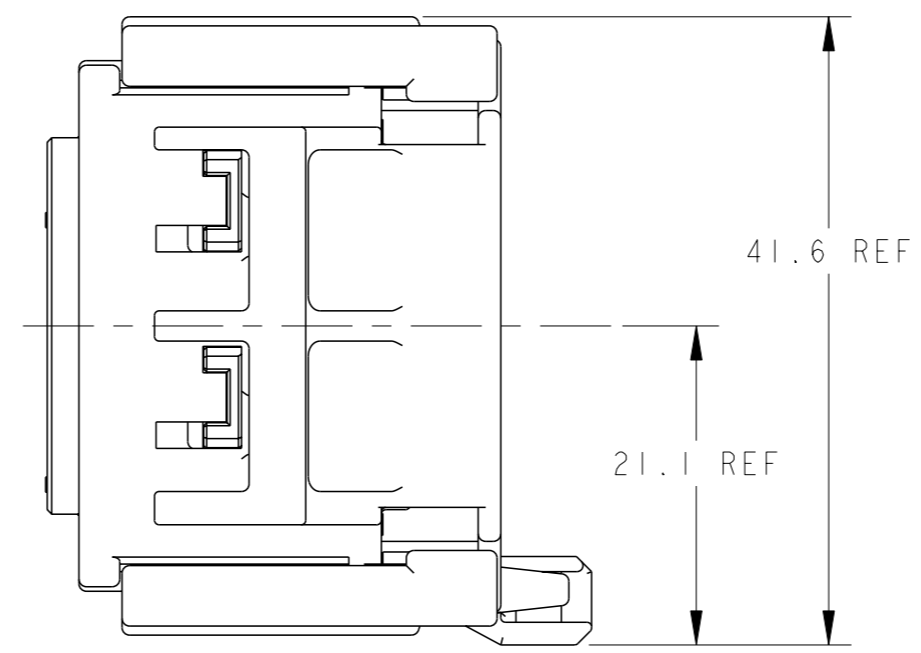
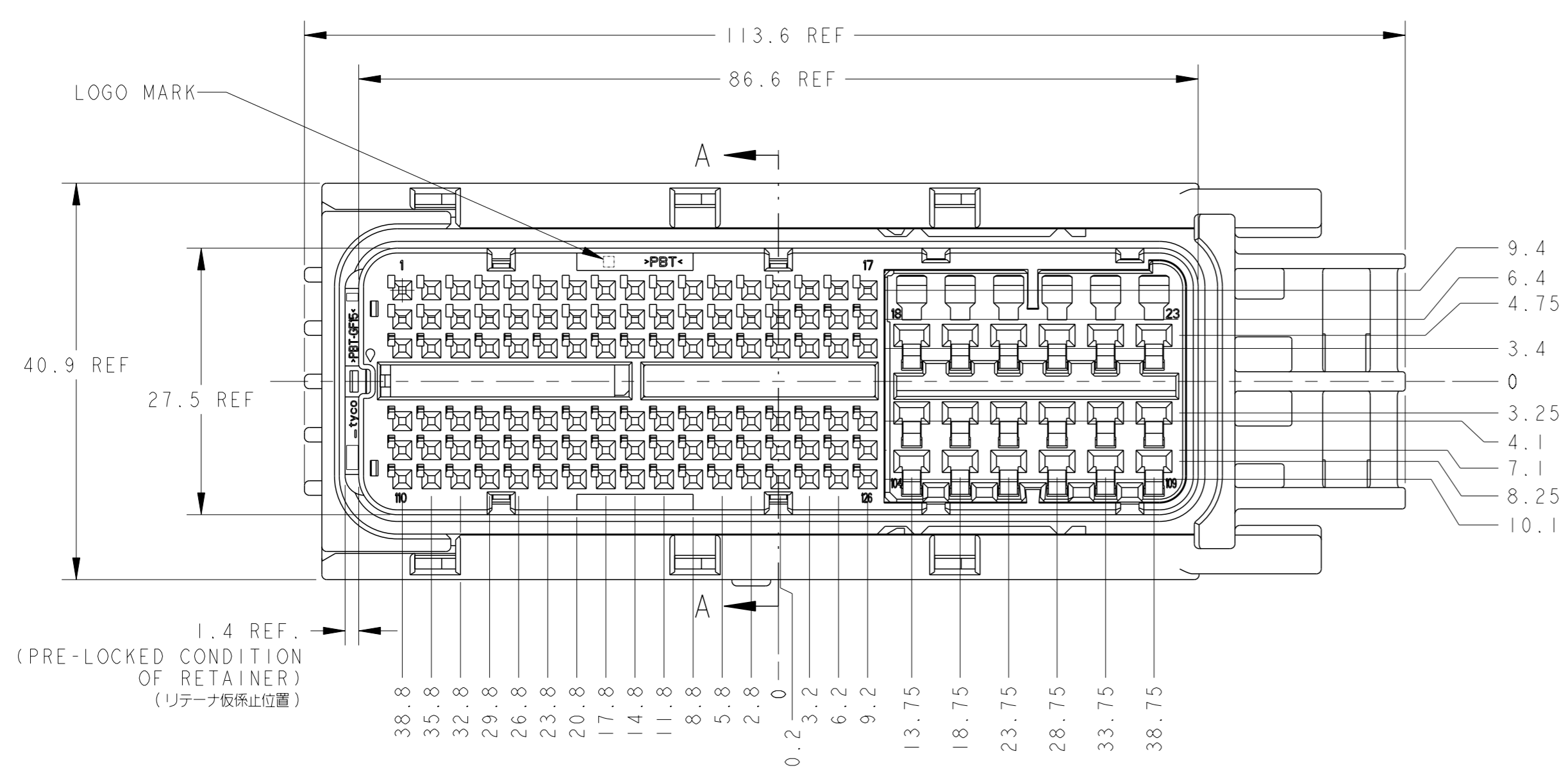
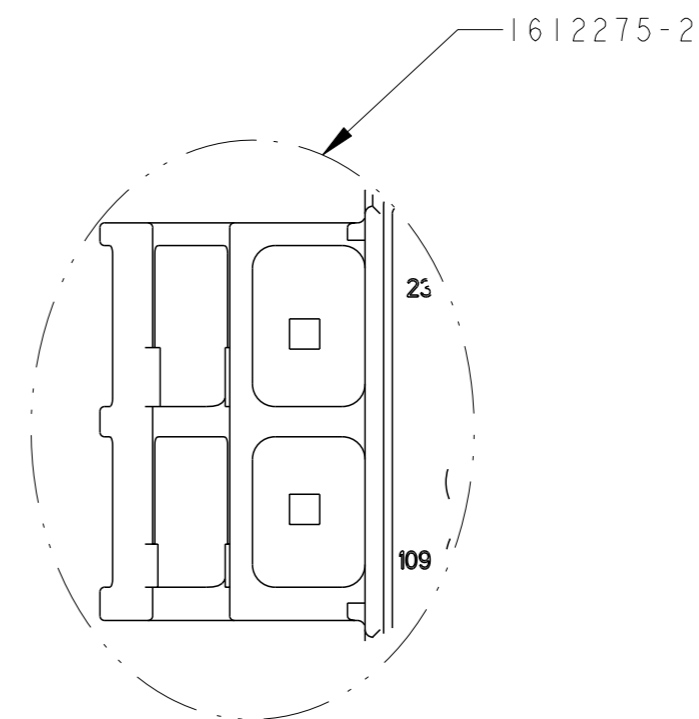
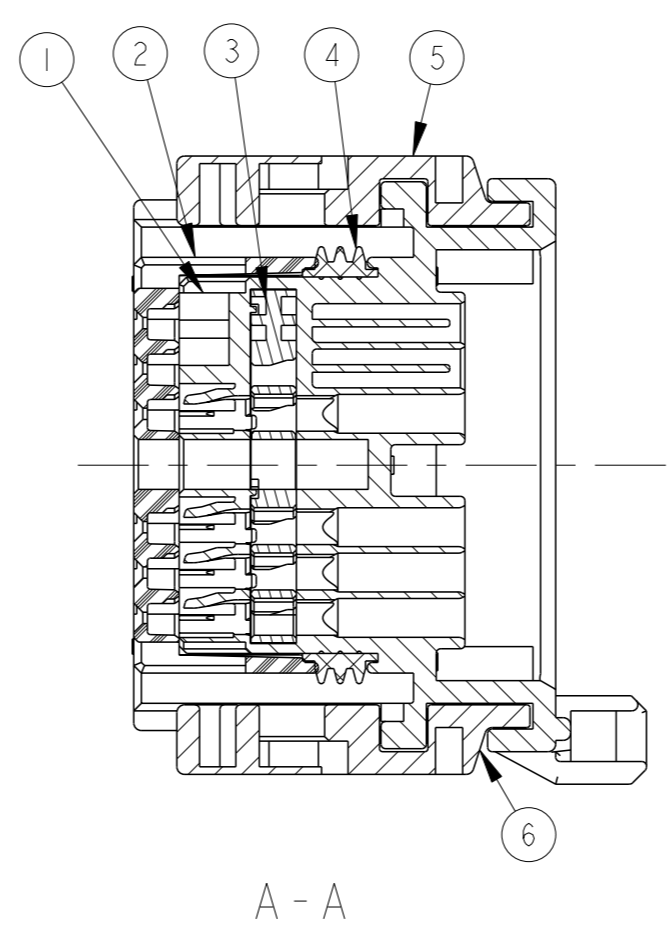
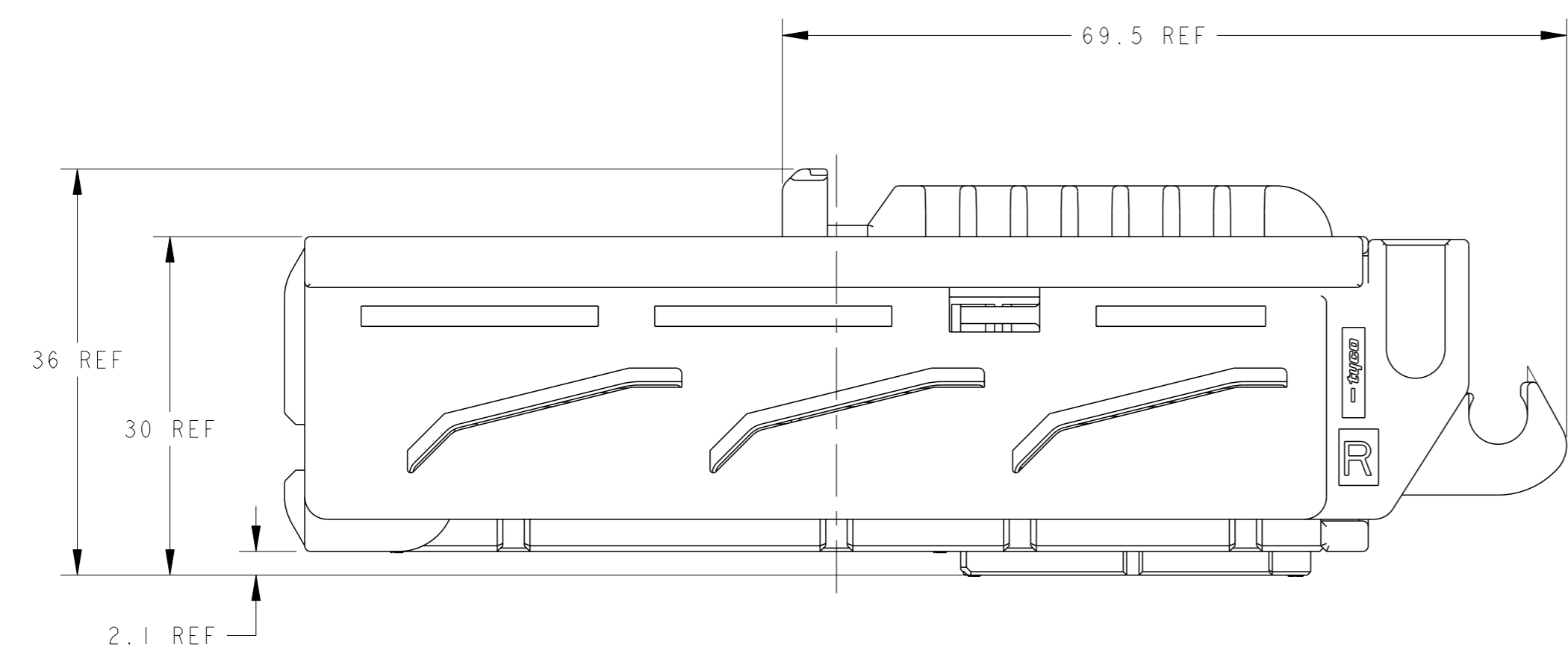
RESTRICTED TO: 2:1

SHEET 1 OF 2

REV B2

REVISIONS				
REV	DATE	DESCRIPTION	OWN	APVD
-	-	SEE SHEET 1	-	-

-2, -4: AS SHOWN  
-2, -4: 本図



THIS DRAWING IS A CONTROLLED DOCUMENT.		OWN	-	TE Connectivity	
DIMENSIONS: 単位: mm		CHK	-	NAME: SEALED EF1 ECU	
TOLERANCES UNLESS OTHERWISE SPECIFIED		APVD	-	0.64/2.311 I/O CONNECTOR	
0 PLC ±0.1		PRODUCT SPEC	-	126POS/89POS PLUG HOUSING ASSY	
1 PLC ±0.1		APPLICATION SPEC	-	SIZE: A1	
2 PANGLE ±0.01		WEIGHT	-	CAGE CODE: 1612275	
3 PLC ±0.001		FINISH	-	DRAWING NO: 1612275	
4 PLC ±0.0001		RESTRICTED TO	-	SHEET 2 OF 2	
ANGLES ±0.0001		CUSTOMER DRAWING	-	REV: B2	
FINISH		SCALE	2:1	REV: B2	