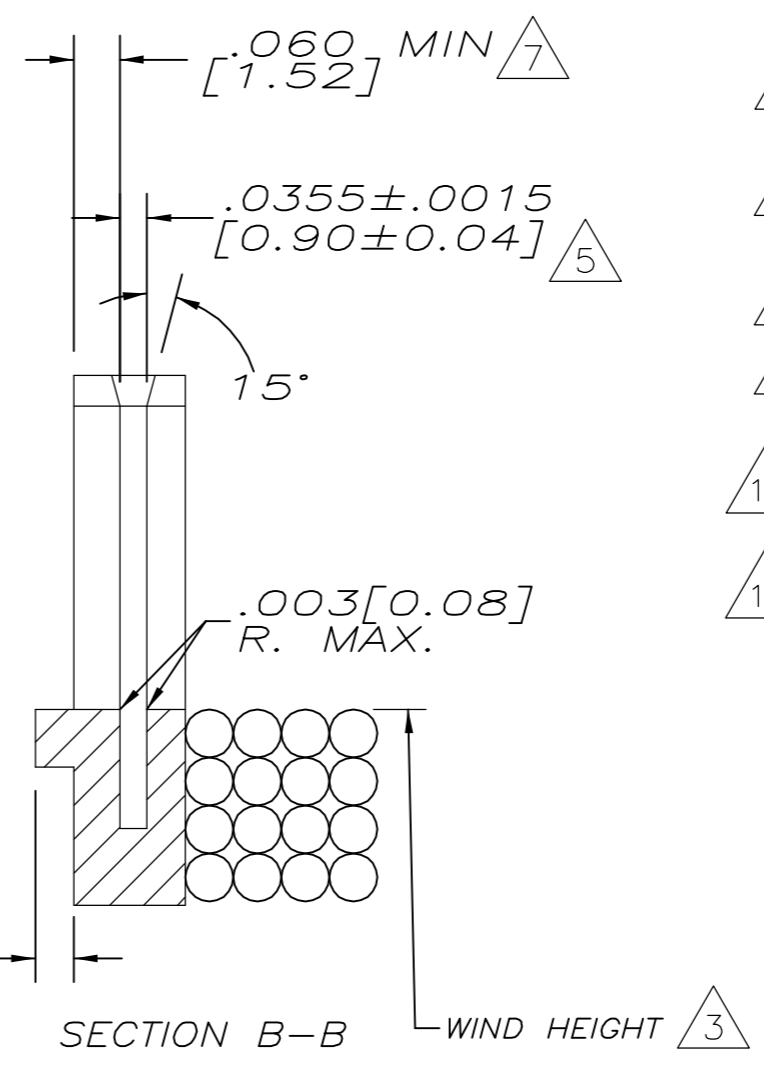
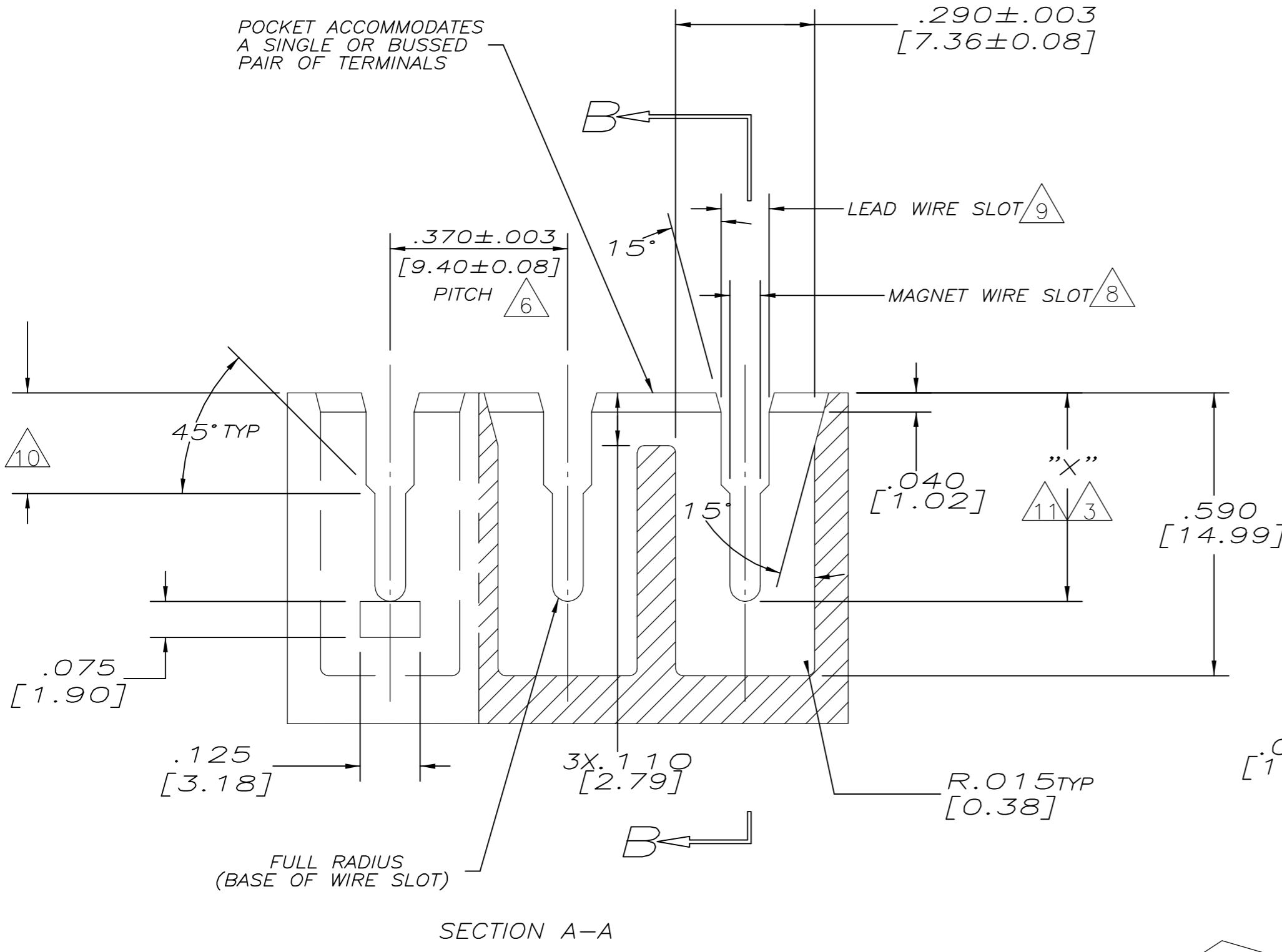
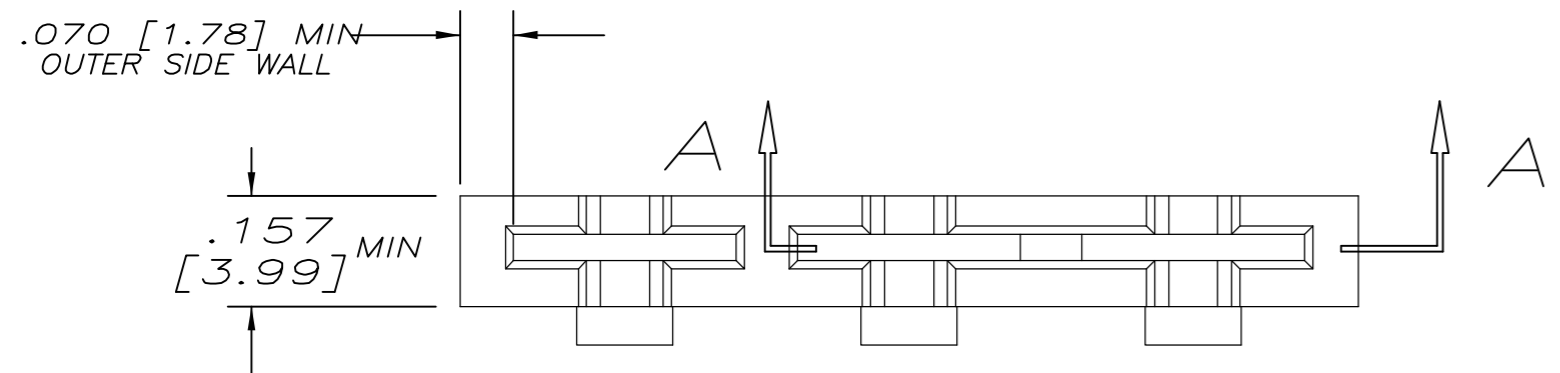


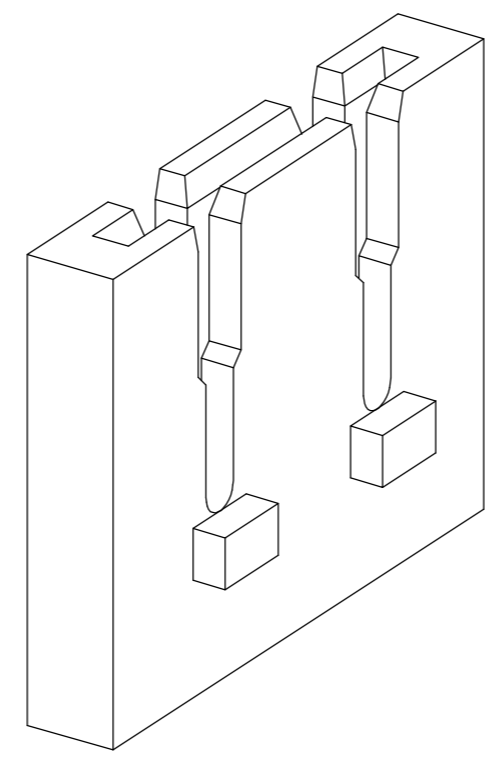
THIS DRAWING IS UNPUBLISHED. RELEASED FOR PUBLICATION
 © COPYRIGHT BY TYCO ELECTRONICS CORPORATION. ALL RIGHTS RESERVED.

LOC		DIST		REVISIONS			
P	LTR	DESCRIPTION	DATE	DWN	APVD		
AF	50	A	REVISED PER OG3A-0021-05	15JAN05	MF	GJ	



- 1 DIMENSIONS SPECIFIED MAY VARY PER CUSTOMER APPLICATION, DO NOT TOOL WITHOUT TYCO ELECTRONICS REVIEW AND APPROVAL.
- 2 TYCO ELECTRONICS REQUIRES THE FOLLOWING INFORMATION IN ORDER TO APPROVE THE CUSTOMERS APPLICATION DRAWING: MAGNET WIRE RANGE, LEAD WIRE RANGE, AND INSULATION RANGE.
- 3 MAGNET WIRE COIL MUST NOT EXCEED HEIGHT OF MAGNET WIRE SLOT AS SHOWN UNLESS PROVISIONS ARE MADE TO KEEP "FINISH" WIRE FLAT AGAINST BASE OF WIRE SLOTS.
- 4 NYLON 6/6 AND NYLON 6/6 30% GLASS FILLED. OTHER MATERIALS ARE ACCEPTABLE HOWEVER, CONSULT TYCO ELECTRONICS FOR SPECIFICATIONS.
- 5 MUST MAINTAIN SLOT THICKNESS .0355 [0.90] INCLUDING DRAFT ANGLE FROM BOTTOM OF POCKET TO .015 [0.38] MINIMUM ABOVE BASE OF WIRE SLOT. (.040 [1.02] MAX THICKNESS AT TOP)
- 6 WHERE EVER POSSIBLE POCKET PITCH (CAVITY) SHOULD MATCH TERMINAL PITCH, BUT WITH TOLERANCE SHOWN.
- 7 .070 [1.78] MIN WALL THICKNESS RECOMMENDED ON TRIM POST SIDE WHEN WIRE TRIMMING IS REQUIRED.
- 8 SIZE THIS SLOT FOR LARGEST MAGNET WIRE DIAMETER.
- 9 SIZE THIS SLOT FOR LARGEST LEAD WIRE. MAXIMUM SLOT TO BE .110 [2.79] WIDE.
- 10 THIS DIMENSION TO BE .210 [5.33] PLUS THE WALL THICKNESS OF THE LEAD WIRE TO BE USED.
- 11 REFER TO TABLE. CONSULT TYCO ELECTRONICS IF WIRE SIZE TO BE USED OVERLAP THE RANGES SHOWN.

#19-#23 [0.91-0.57]	.388 [9.86]
#15.5-#18 [1.37-0.97]	.405 [10.29]
#12-#15 [2.06-1.45]	.426 [10.82]
MAGNET WIRE SIZE AWG [mm] DIA	SLOT DEPTH "X" ±.003 [±0.08]



THIS DRAWING IS A CONTROLLED DOCUMENT.		DWN MICHAEL S. FEHER	tyco Tyco Electronics Corporation	
DIMENSIONS: INCHES		CHK GENE JACONO	Harrisburg, Pa 17105-3608	
TOLERANCES UNLESS OTHERWISE SPECIFIED:		APVD KURT A. RANDOLPH	NAME MEDIUM RANGE WIRE TO WIRE SIAMEZE POCKET SPECIFICATION	
0 PLC ± -		PRODUCT SPEC	SIZE CAGE CODE DRAWING NO	
1 PLC ± -		APPLICATION SPEC	RESTRICTED TO	
2 PLC ± .01 [0.25]		408-8629	A2 00779 C=1601436	
3 PLC ± .005 [0.13]		WEIGHT -	SCALE 4:1 SHEET 1 OF 1 REV A	
4 PLC ± .0010 [0.026]		CUSTOMER DRAWING		
ANGLES ± 2°				
FINISH -				