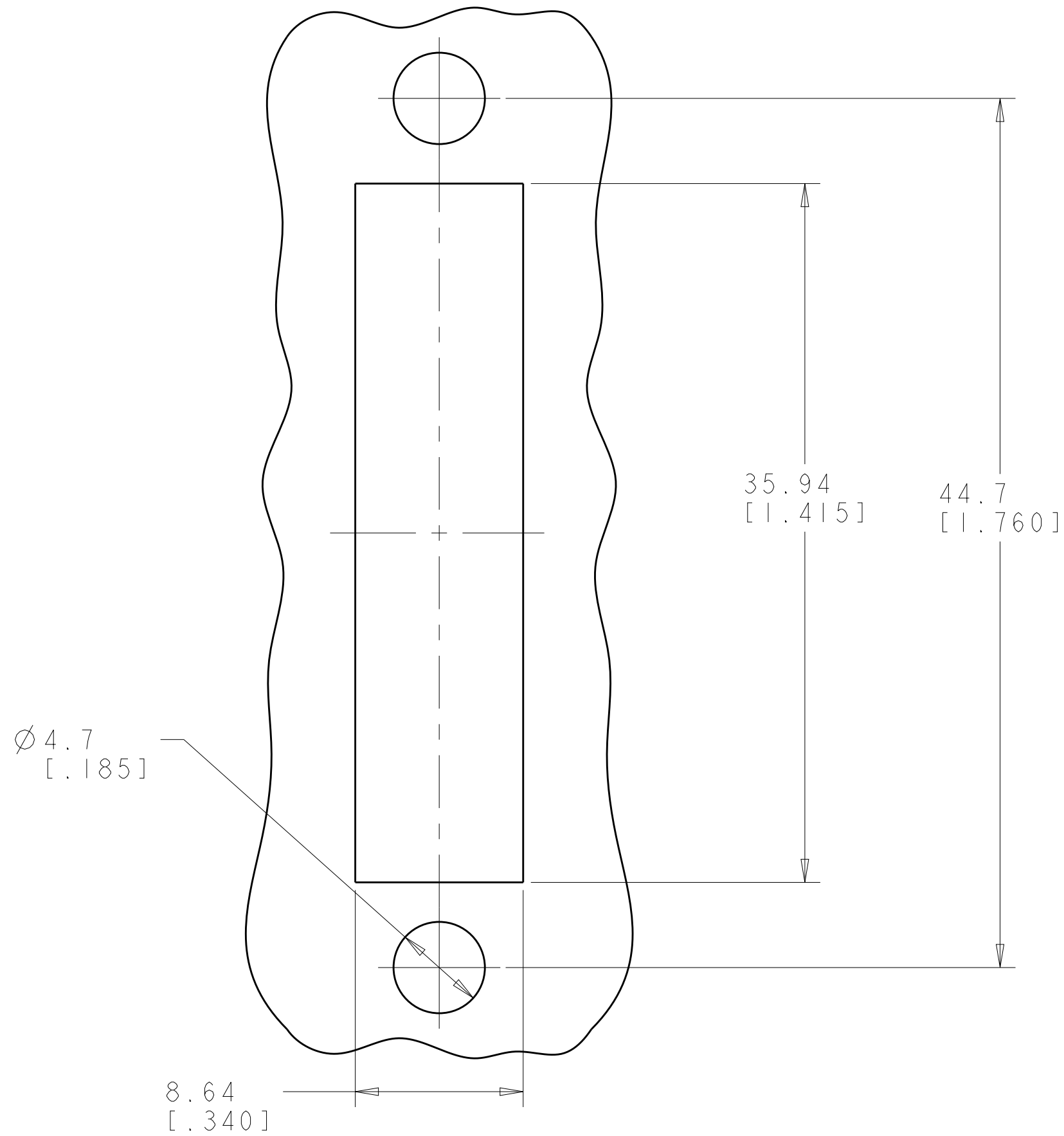
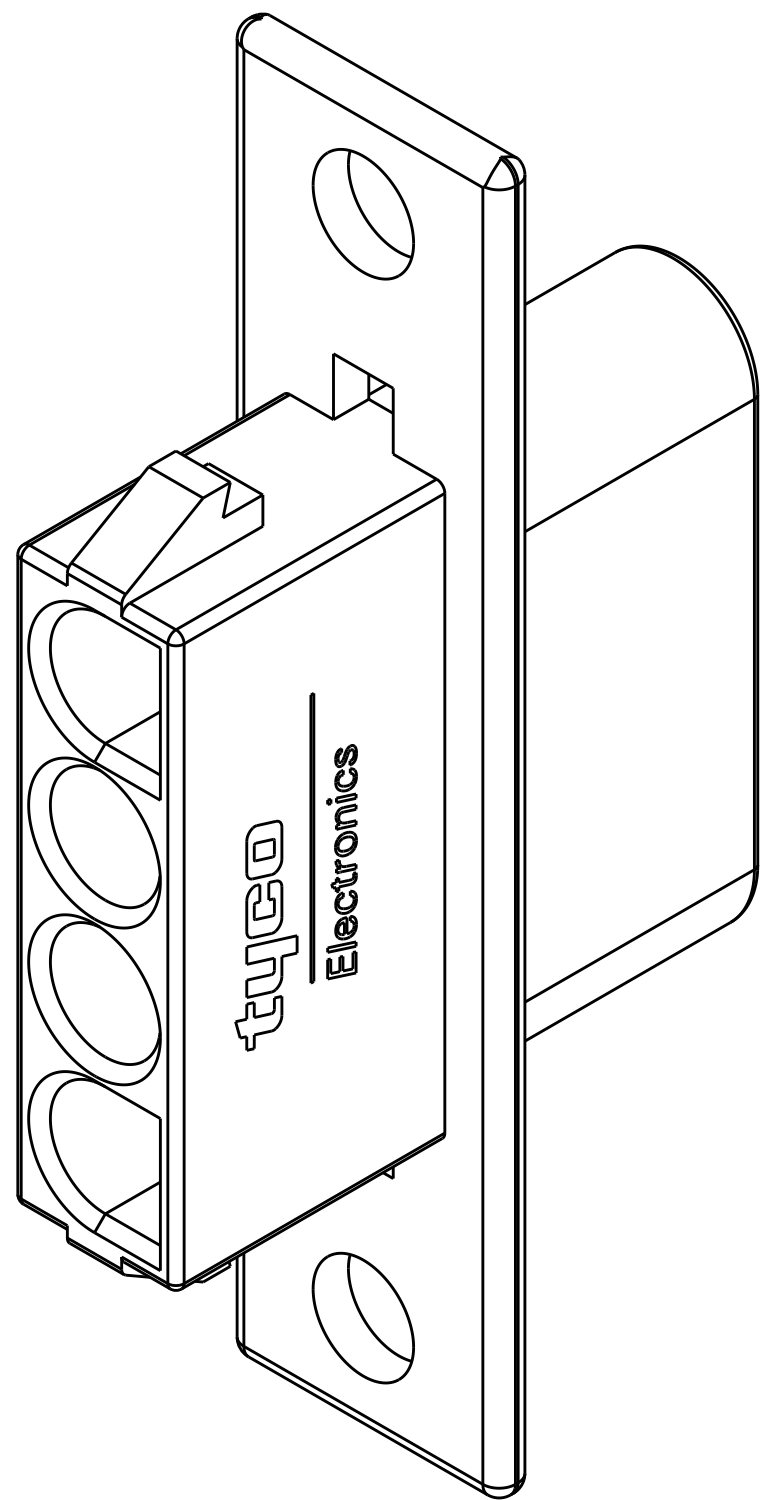
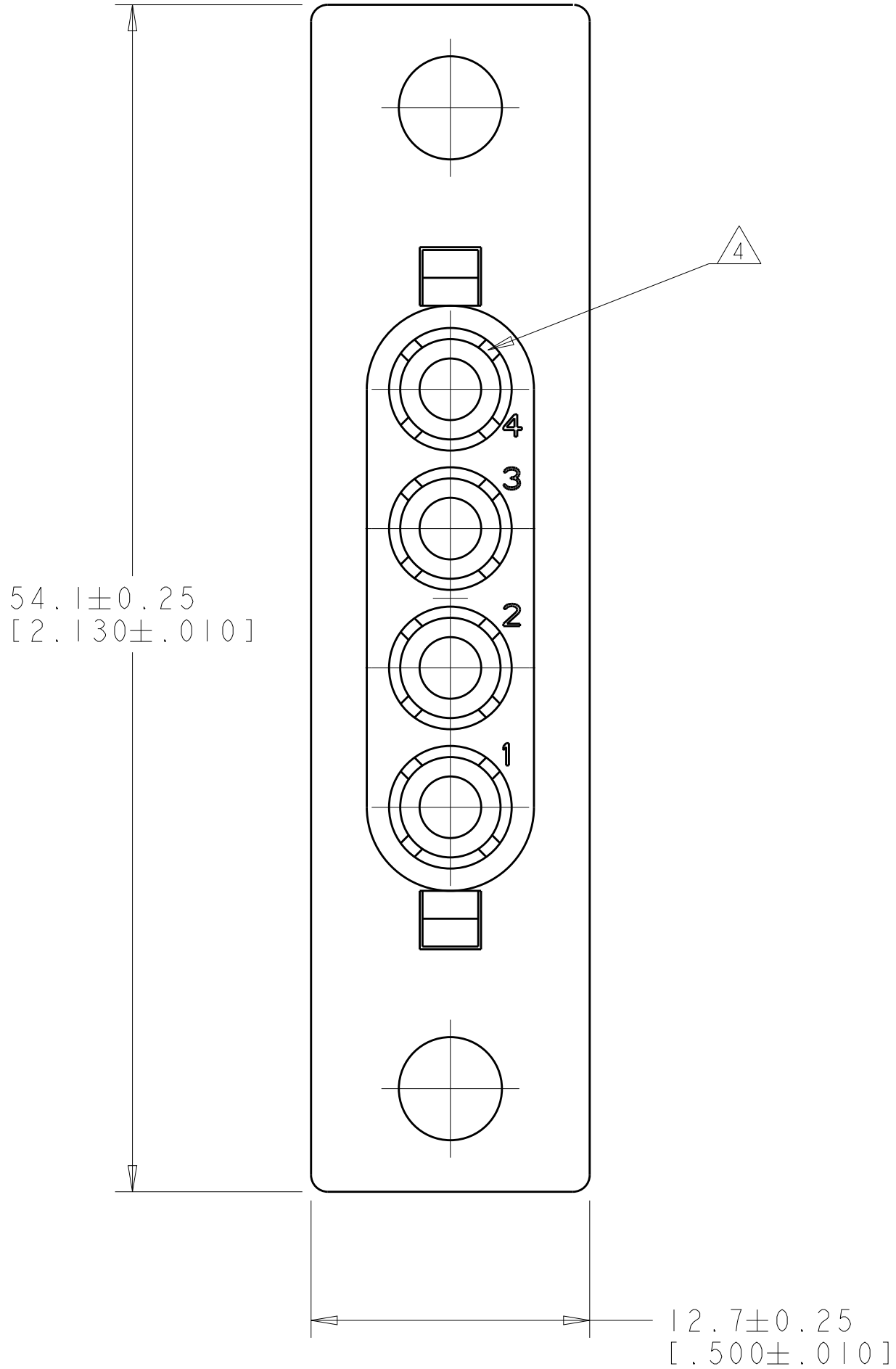
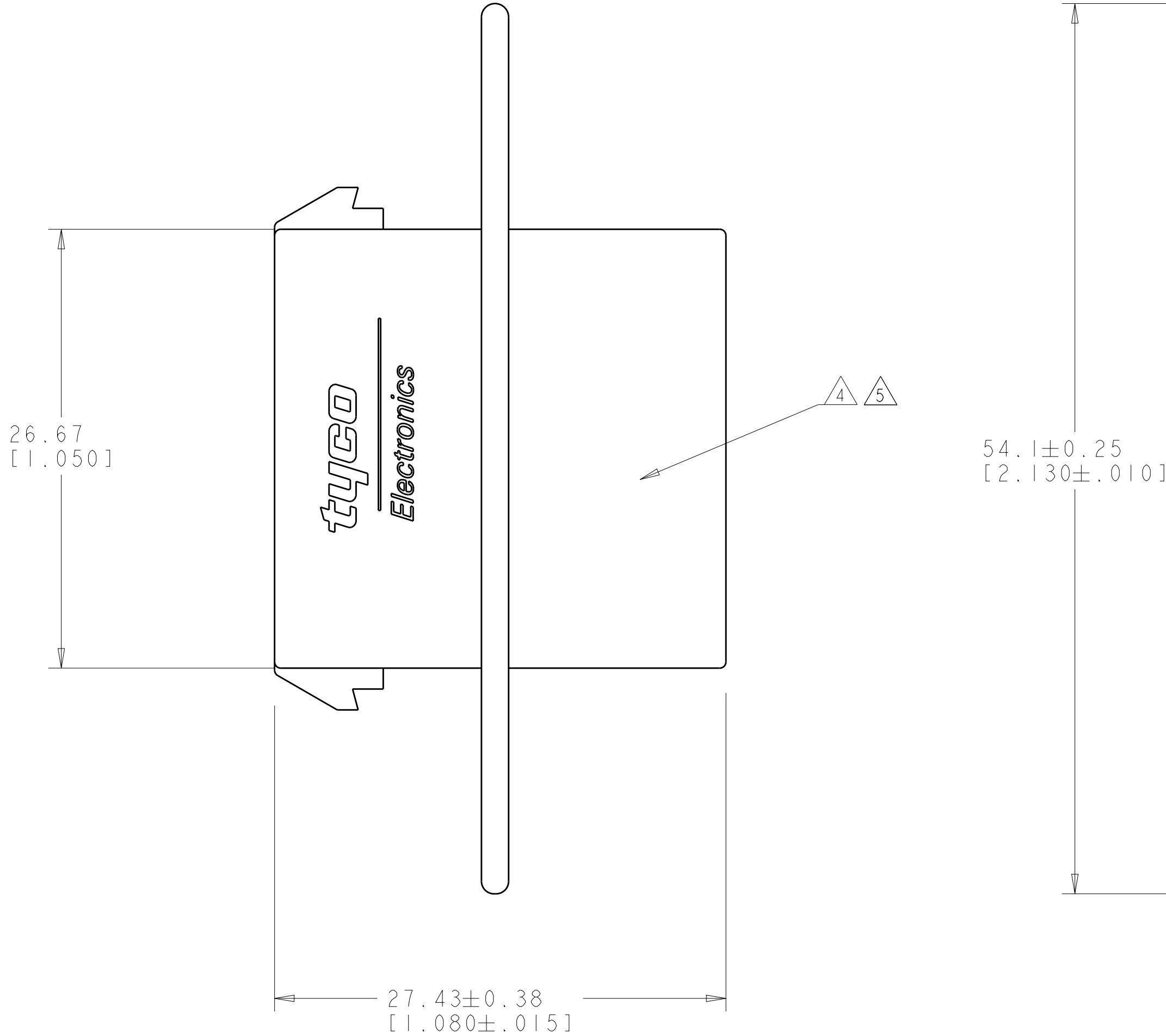
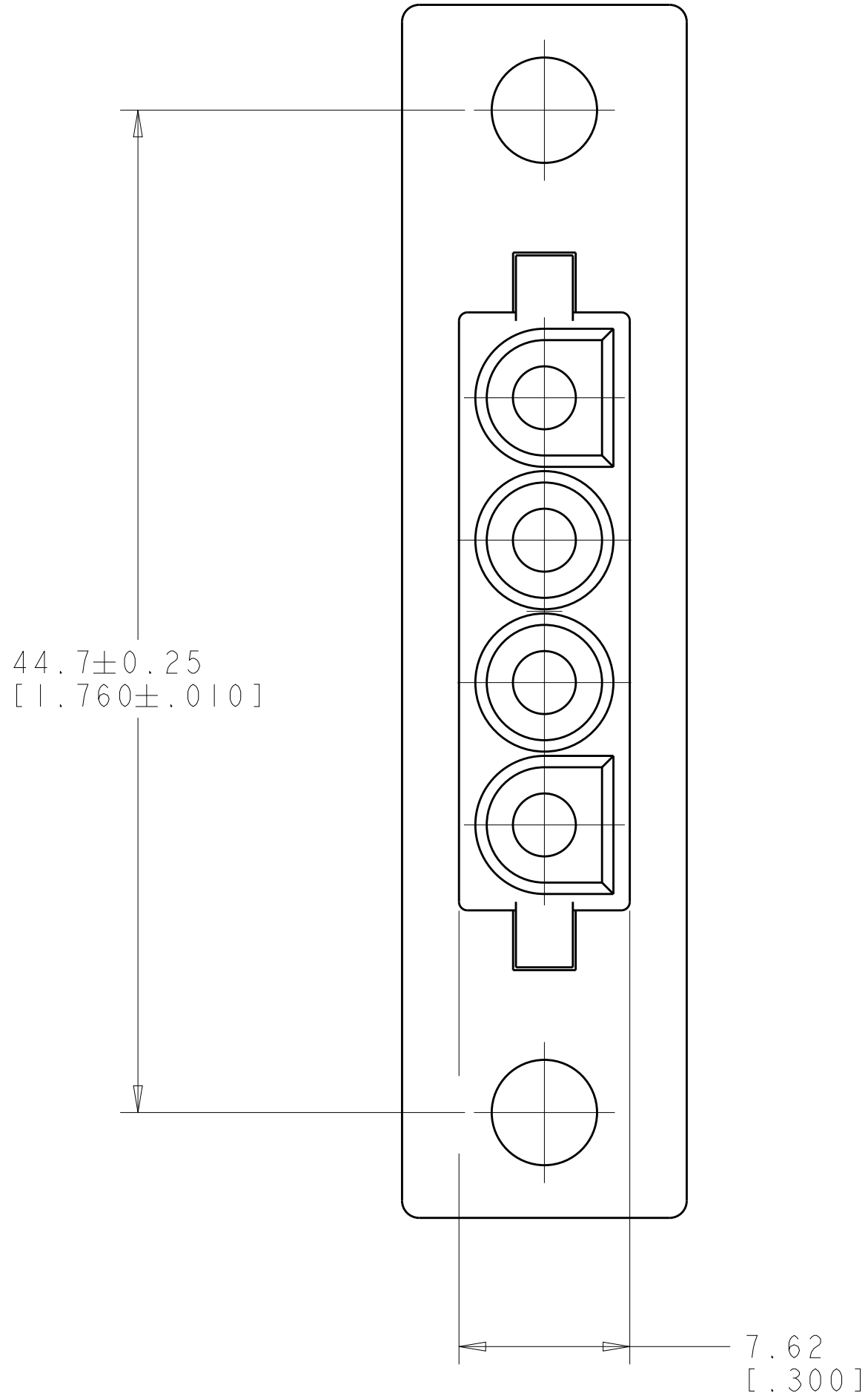


REVISIONS					
P	LTR	DESCRIPTION	DATE	DWN	APVD
	2	REVISED PER ECR-17-015449	25OCT2017	BDA	KR



1. MATES WITH APPROPRIATE
UNIVERSAL MATE-N-LOK™ PLUG.
2. DIMENSIONS SHOWN REPRESENT PRODUCT
IN DRY, AS MOLDED, CONDITION. ADDITIONAL
2% GROWTH DUE TO SUBSEQUENT MOISTURE
ABSORPTION MAY OCCUR AND SHOULD BE
ACCOUNTED FOR.
3. FOUR RIBS EQUALLY SPACED, NO
SPECIFIC ORIENTATION. NO RIBS
OR SIX RIBS EQUALLY SPACED, NO
SPECIFIC ORIENTATION, OPTIONAL.
4. UNDERWRITERS RECOGNIZED
COMPONENT LOGO AND CSA CERTIFICATION
LOGO TO BE LOCATED ONCE EACH ON
SIDE OF HOUSING.
5. MANUFACTURING LOCATION (OPTIONAL).



RECOMMENDED PANEL CUTOUT

PRELIMINARY PART-
NOT RELEASED FOR PRODUCTION

0.231 IN ³	1586791-1
VOLUME	PART NUMBER

THIS DRAWING IS A CONTROLLED DOCUMENT.		DWN K. WHITAKER	25JUL2006	 TE Connectivity	
		CHK S. RIDGILL	25JUL2006		
DIMENSIONS: mm[INCHES]	TOLERANCES UNLESS OTHERWISE SPECIFIED:	APVD S. RIDGILL	25JUL2006	NAME	
		PRODUCT SPEC		CAP. 4 CIRCUIT, PANEL FLANGE MOUNT, UNIVERSAL MATE-N-LOK(TM)	
		APPLICATION SPEC			
		ANGLES			
MATERIAL NYLON, UL95V-0 WHITE		WEIGHT		SIZE	
		SEE TABLE		CAGE CODE	
		CUSTOMER DRAWING		DRAWING NO	
				RESTRICTED TO	
				SCALE	
				4:1	
				SHEET	
		1 OF 1			
		REV			
		2			