

4

3

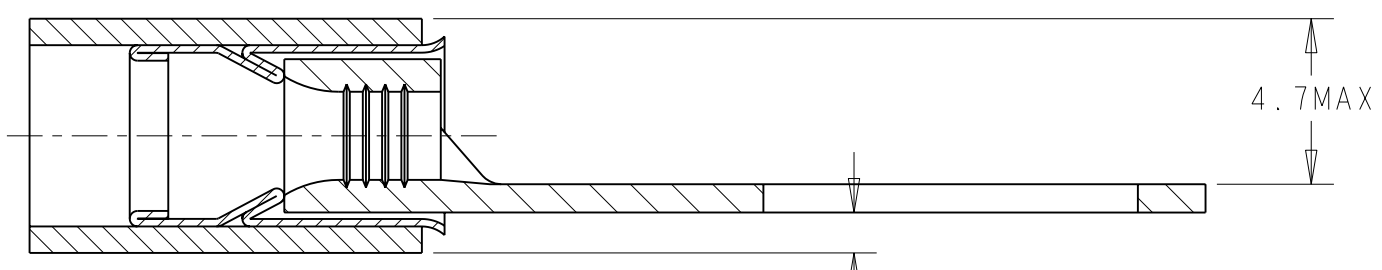
2

1

THIS DRAWING IS UNPUBLISHED. RELEASED FOR PUBLICATION 20  
 © COPYRIGHT 20 BY TYCO ELECTRONICS CORPORATION. ALL RIGHTS RESERVED.

LOC	DIST	REVISIONS			
P	LTR	DESCRIPTION	DATE	DWN	APVD
F	00	B	09JUN2006	JJD	YP
		C	29OCT2007	JT	GR

COUPE C-C

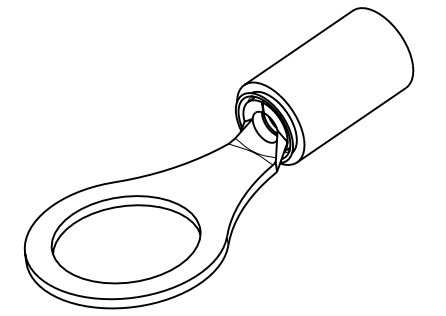


STAMP : AMP 14-12

1.4 MAX

BODY 0.80±0.03 TONGUE THICKNESS

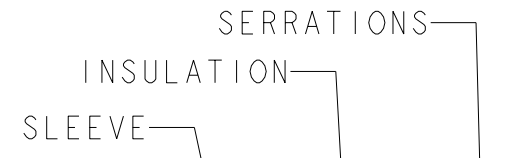
Ø 9.92±0.13 FOR 3/8 STUD



SCALE 2:1

FOR INSULATION Ø 2.30 - 3.18

Ø 6.05 MAX



0.79 MIN

13.29 MIN

13.49±0.15

24.92 MAX

31.73 MAX

WIRE TERMINAL	1577643-1	BODY : COPPER ANNEALED FINISH : NICKEL PLATED
		SLEEVE : COPPER ANNEALED FINISH : NICKEL PLATED
		INSULATION : PEEK COLOR : BEIGE
DESCRIPTION	PART NUMBER	MATERIAL & FINISH

THIS DRAWING IS A CONTROLLED DOCUMENT FOR TYCO ELECTRONICS CORPORATION  
 IT IS SUBJECT TO CHANGE AND THE CONTROLLING ENGINEERING ORGANIZATION  
 SHOULD BE CONTACTED FOR THE LATEST REVISION.

DIMENSIONS: mm	TOLERANCES UNLESS OTHERWISE SPECIFIED:
	0 PLC ± 1 PLC ±0.3 2 PLC ± 3 PLC ± 4 PLC ± ANGLES ±5
MATERIAL SEE TABLE	FINISH SEE TABLE

DWN JJ. DESPRETZ 22FEB2006	Tyco Electronics France SAS 95300 Pontoise, France
CHK G. ROBERT 22FEB2006	
APVD Y. PETRONIN 22FEB2006	
PRODUCT SPEC 108-15356	
APPLICATION SPEC 114-15102	NAME TERMINAL, PEEK PIDG STRATO, 14-12 AWG
WEIGHT 1,54 gr	SIZE A3 CAGE CODE 00779 DRAWING NO C-1577643 RESTRICTED TO -
CUSTOMER DRAWING	SCALE 5:1 SHEET 1 OF 1 REV C