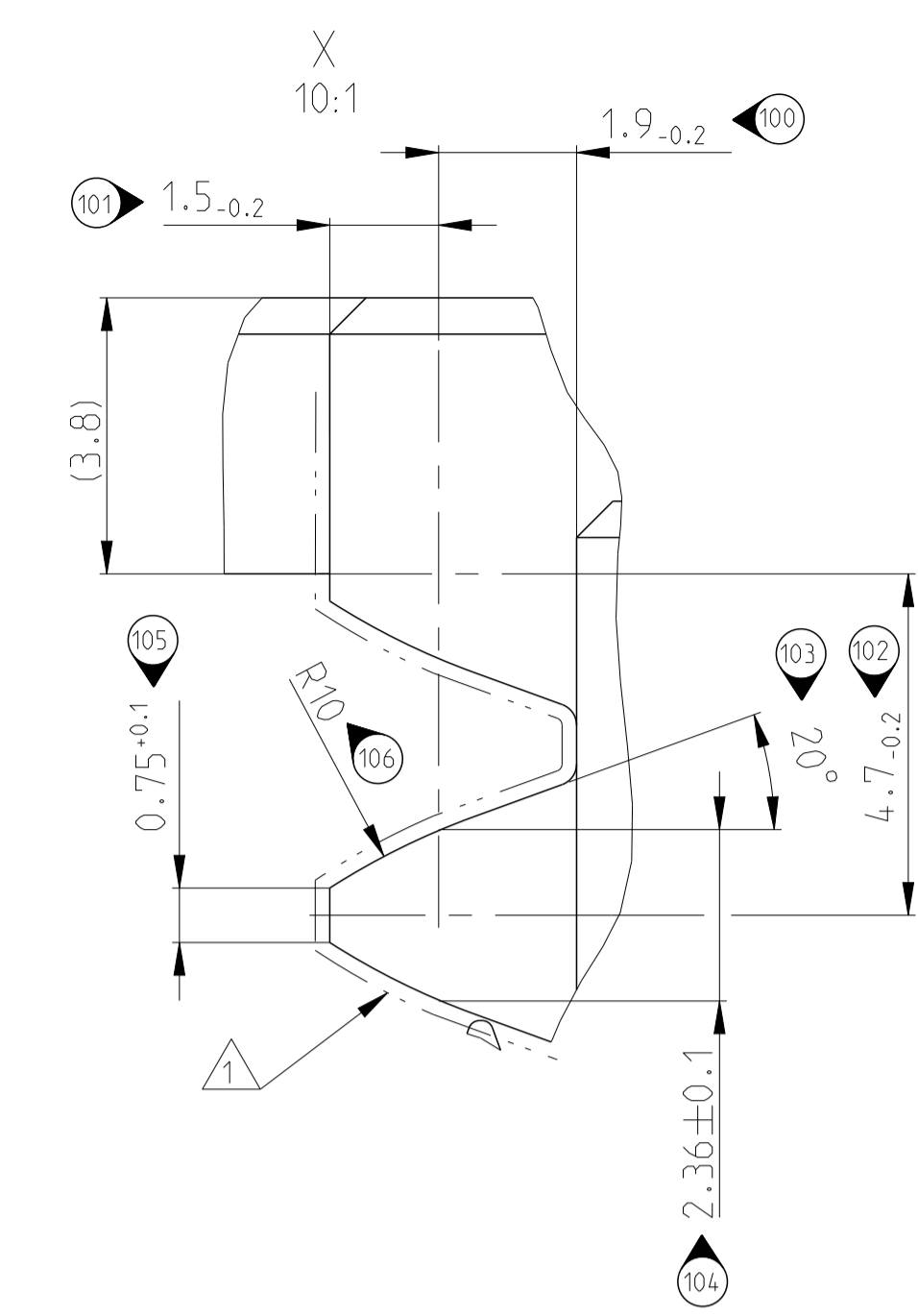
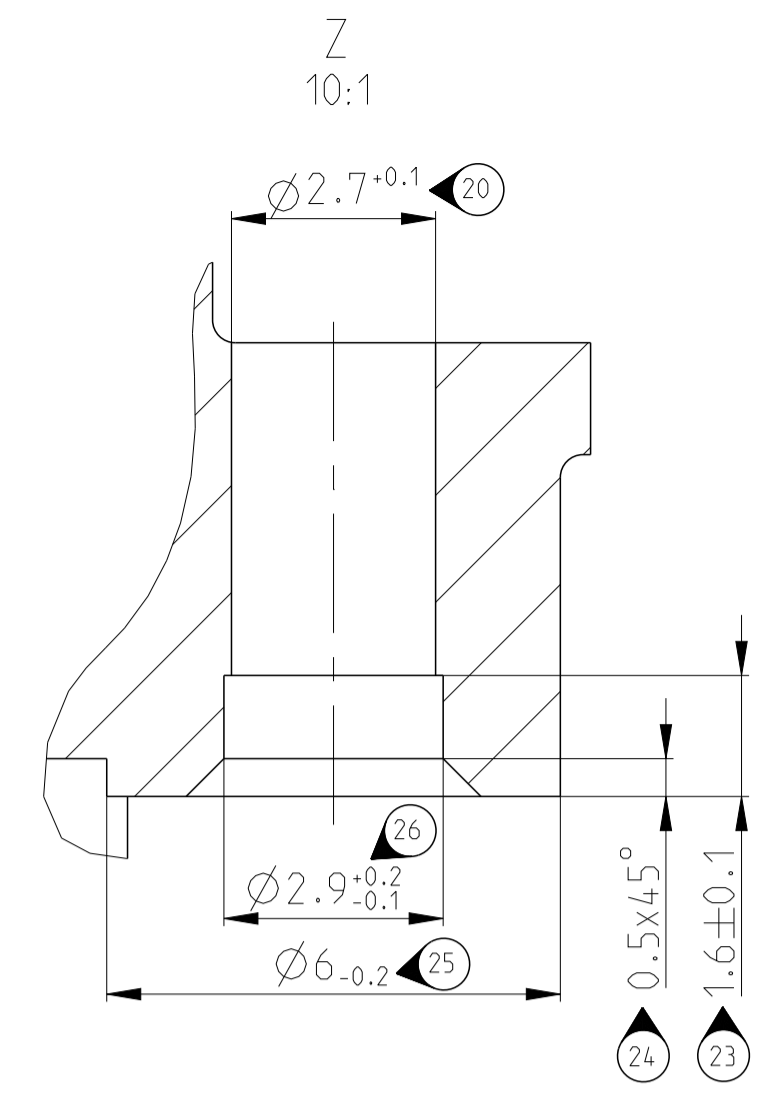
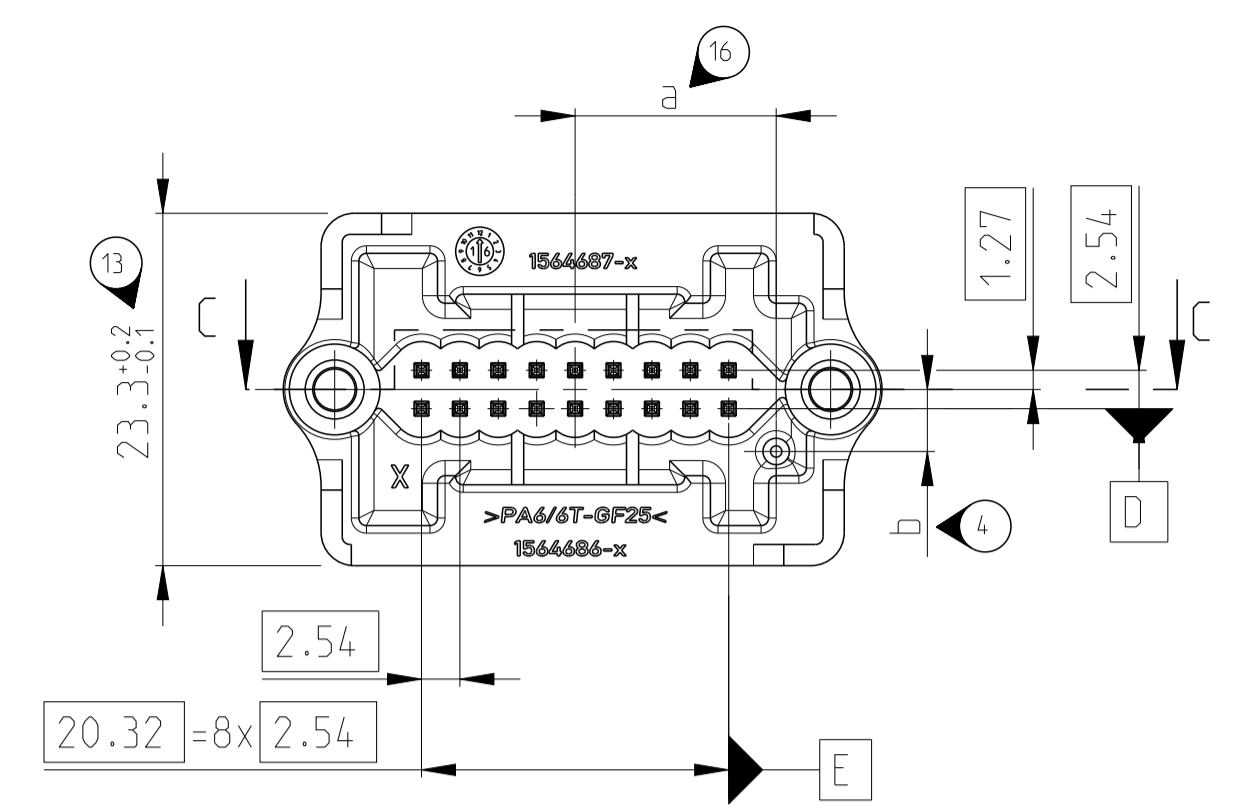
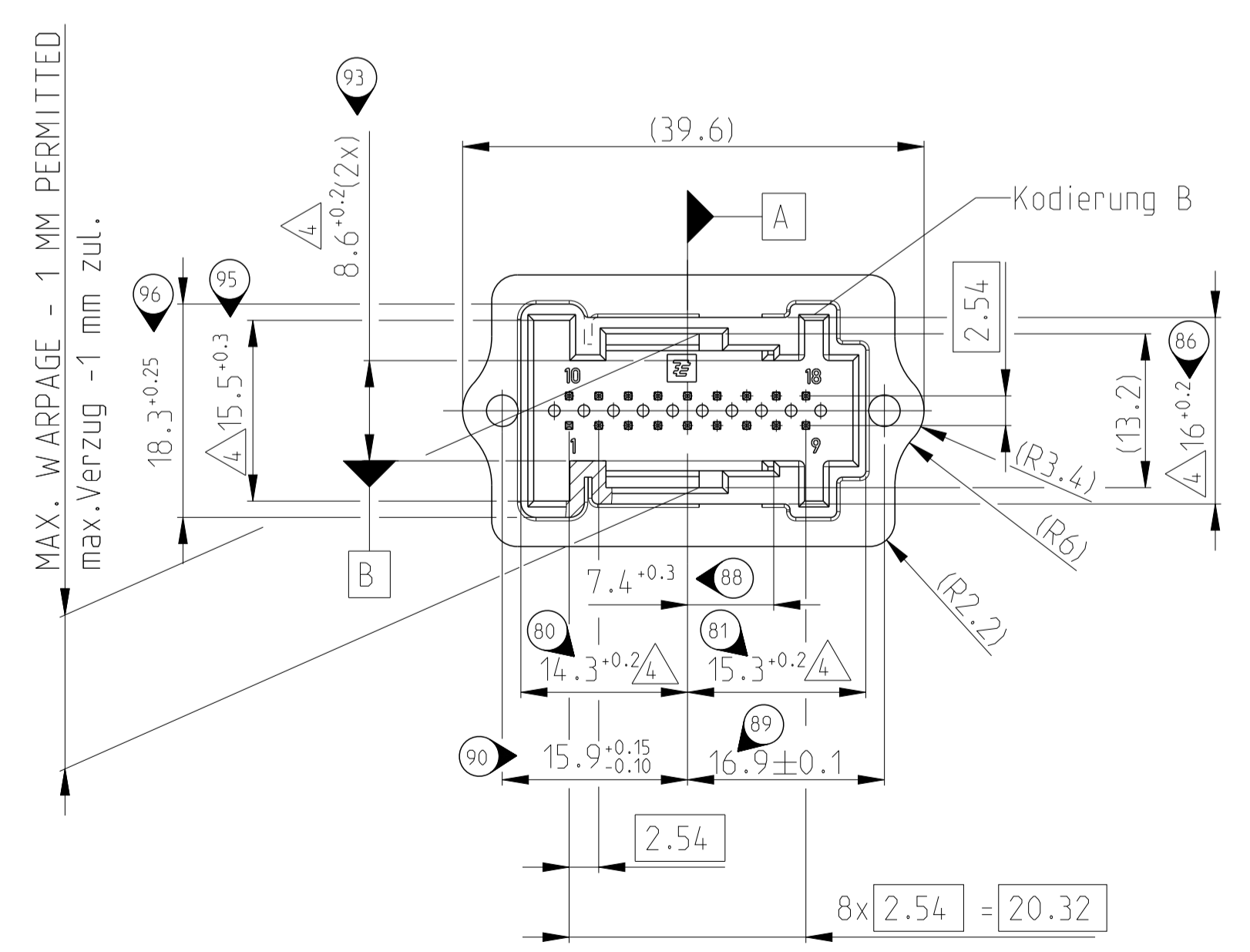
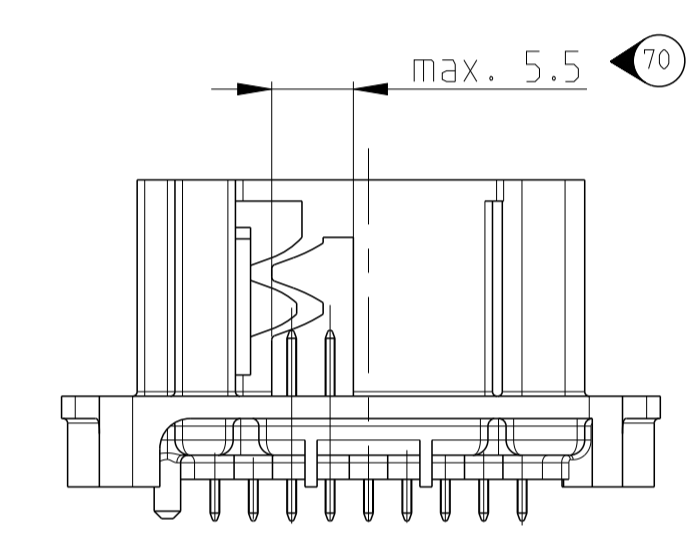
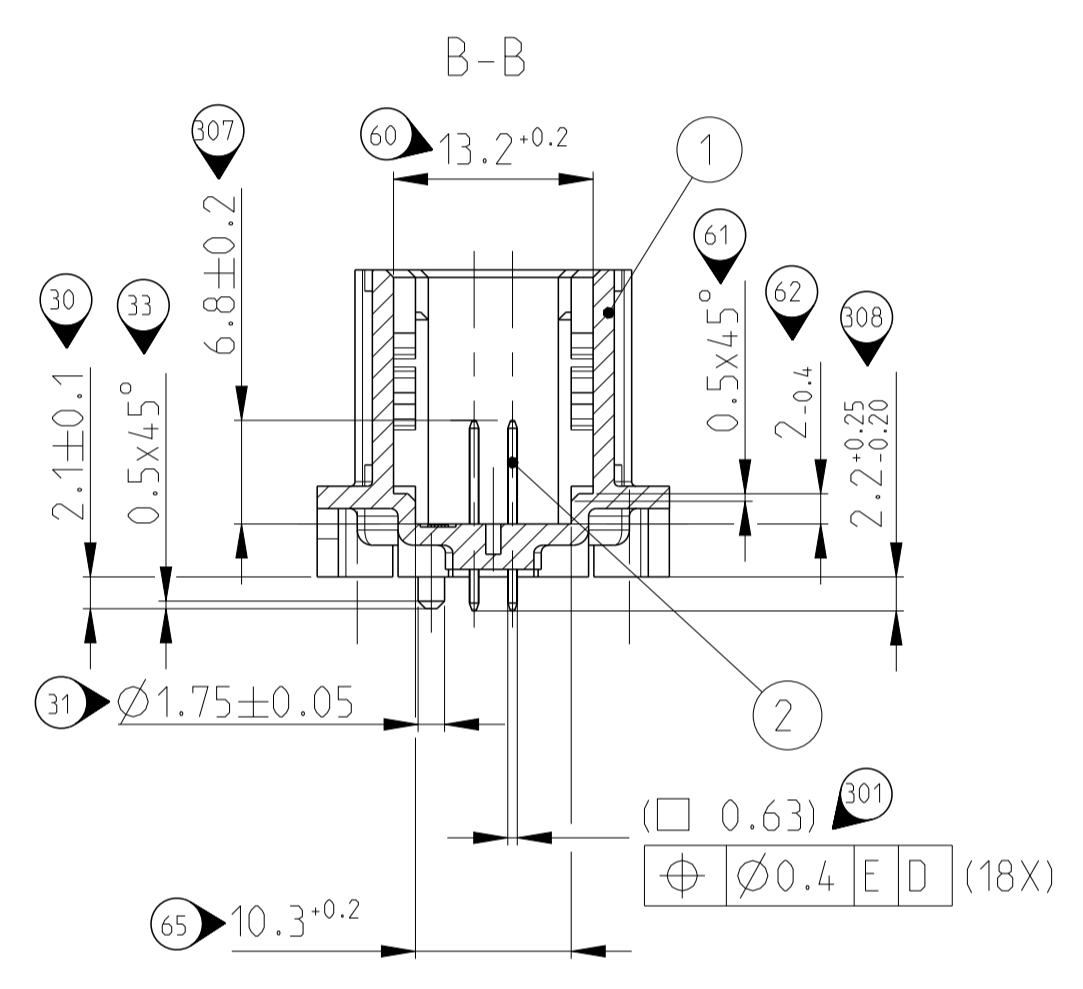
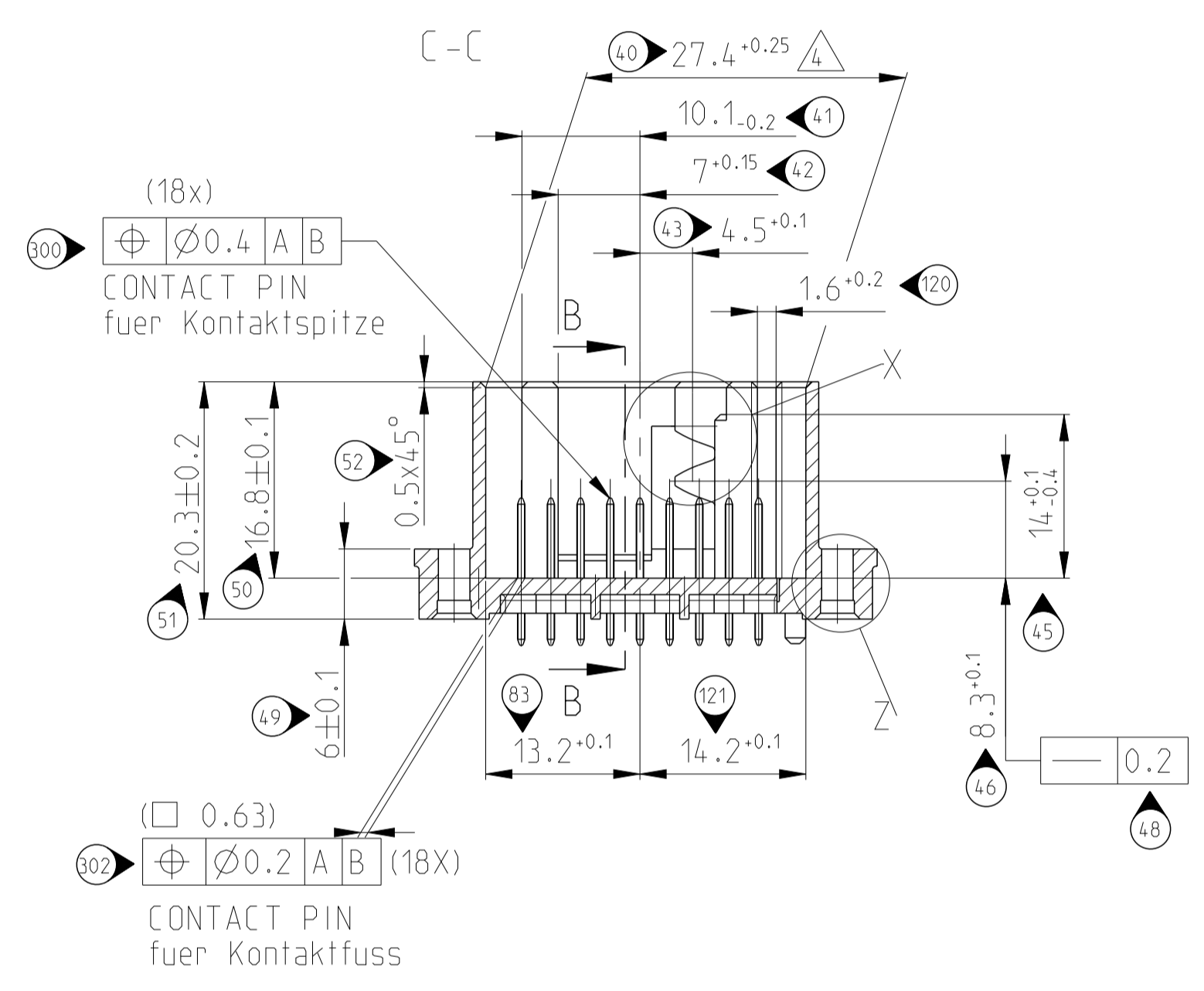
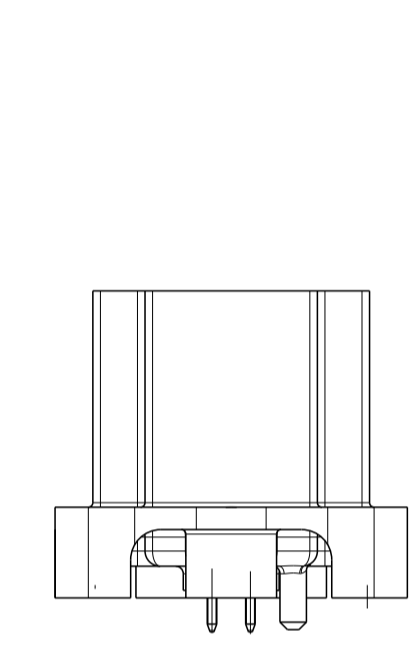


PROJEKT NR. EGATN08053		REVISIONS		
PLN	DESCRIPTION	DATE	DWN	APVD
A1	New Drawing	06 JUN 2008	-	-
A2	TOLERANCES OPTIMIZED	15 MAR 2016	MbS	GP
A3	ECR-19-013006	21 AUG 2019	KG	KK



- NOTES / Bemerkungen
- IN THIS AREA NO BURRS PERMITTED
In diesem Bereich kein Grat zulässig
 - NOT SPECIFIED RADII R0.5
Nicht bemastete Radien R0.5
 - NOT SPECIFIED WALL THICKNESS 1.4±0.1
Nicht bemastete Wandstärken 1.4±0.1
 - WARPAGE -0.2mm PERMITTED
Verzug -0.2mm zul.
 - MATED TE/DC INTERFACE 114-18063-133 . Rev A1
Entspricht TE/DC Schnittstelle 114-18063-133. Rev. A1
 - ONLY THE GERMAN LANGUAGE VERSION SHALL BE BINDING
Massgebend ist der deutsche Text
 - MATED WITH 1718421
Passend zu Buchenstecker 1718421
 - CONTACTS 1-3 µm PRETINNED OVER Ni
Kontakte 1-3 µm vorverzinkt ueber Ni
 - PA6/6T-GF25 Ultramid TKR 4355 G5
 - PACKAGING: ACC. TE SPEC. V-1564687
Verpackung nach TE Spez. V-1564687
 - PRE DASH NUMBER DESCRIBES PACKAGING-VARIANTS
AND IS NOT SHOWN ON PART
Vorstrichzahl beschreibt die Verpackungsvariante und
ist nicht im Geh. abgebildet



CODING B AS SHOWN

B	1-1564687-1	0-1564687-1	10	for Bosch	A	-	Hsg. in Bosch packaging	-	-	-
B	0-1564687-1	-	10		A	18	0.63mm PIN	COPPER ALLOY Cu-Legierung	8	2
						1	PIN HEADER, 18POS	9	NATURE	1
COD.	TE ORDER NO.	MADE FROM	PACKAGING	REV.	PCS	DESCRIPTION	MATERIAL	SURFACE COLOR	POS.	

THIS DRAWING IS A CONTROLLED DOCUMENT. DWN T.Schmitt 06.06.2008
 CHK G.Panitz 22.08.2008

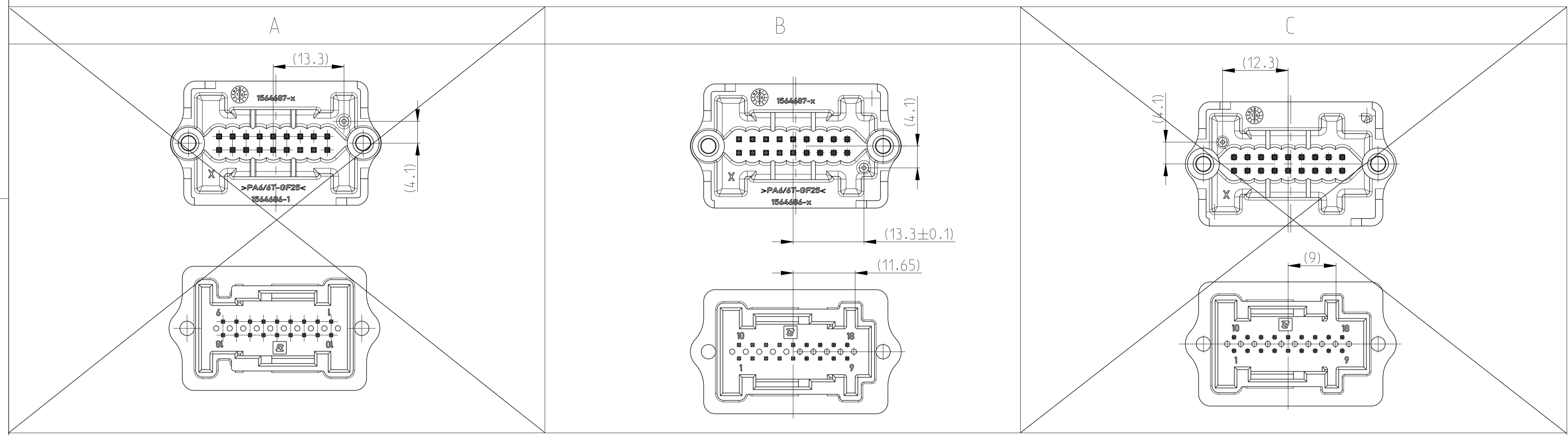
STE TE Connectivity

NAME: MQS PIN HEADER 18POS. ASSY
 MQS Stiftgehäuse, 18pol. Assy

SIZE: A1 CAGE CODE: 00779 DRAWING NO: 1564687
 SCALE: 2:1 SHEET 1 OF 2 REV: A3

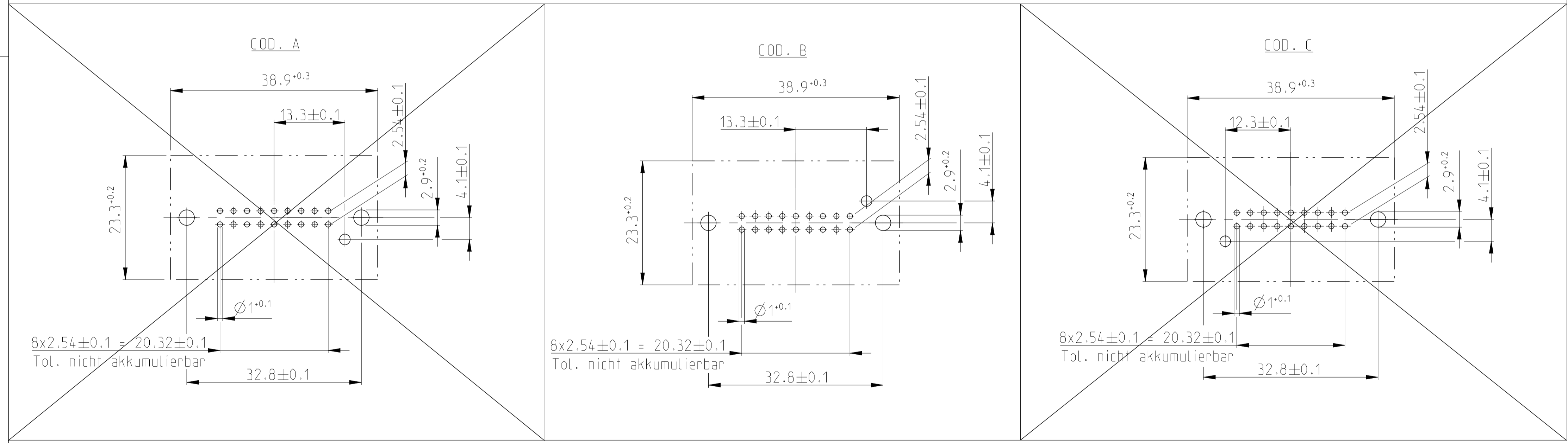
PROJECT NO. EGATN08053		REVISIONS		
P	LTR	DESCRIPTION	DATE	APVD
-		SEE SHEET 1	-	-

CODINGS / Kodierungen



Kodierung/ CODING	Dimension a	Dimension b
A	13.3 ±0.1	(-) 4.1 +0.1
B	13.3 ±0.1	4.1 +0.1
C	(-) 12.3 ±0.1	(-) 4.1 +0.1

NOT BINDING PCB-LAYOUT / unverbindliches Leiterplattenlayout / recommended PCB thickness 1.6mm +/-10% (A3)



THIS DRAWING IS A CONTROLLED DOCUMENT.		DWN T.Schmitt 06.06.2008	NAME	
DIMENSIONS: MASSENHEITEN: MM		CHK G.Panitz 22.08.2008	MQS PIN HEADER 18POS. ASSY MQS Stiftgehäuse, 18pol. Assy	
TOLERANCES UNLESS OTHERWISE SPECIFIED: ALLE DIMENSIONEN		APVD	RESTRICTED TO NUR FÜR	
0 PLC ±0.1 1 PLC ±0.1 2 PLC ±0.1 3 PLC ±0.1 4 PLC ±0.1		PRODUCT SPEC	SIZE	
ANGLES/WINKEL		APPLICATION SPEC	CAGE CODE	
FINISH/BELEGUNG		VERARBEITUNGSSPEZ.	DRAWING NO.	
MATERIAL		WEIGHT	00779	
		GEWICHT	©=1564687	
		CUSTOMER DRAWING	/KUNDENZEICHNUNG	
		SCALE	2:1	
		SHEET	2	
		OF	2	
		REV	A3	