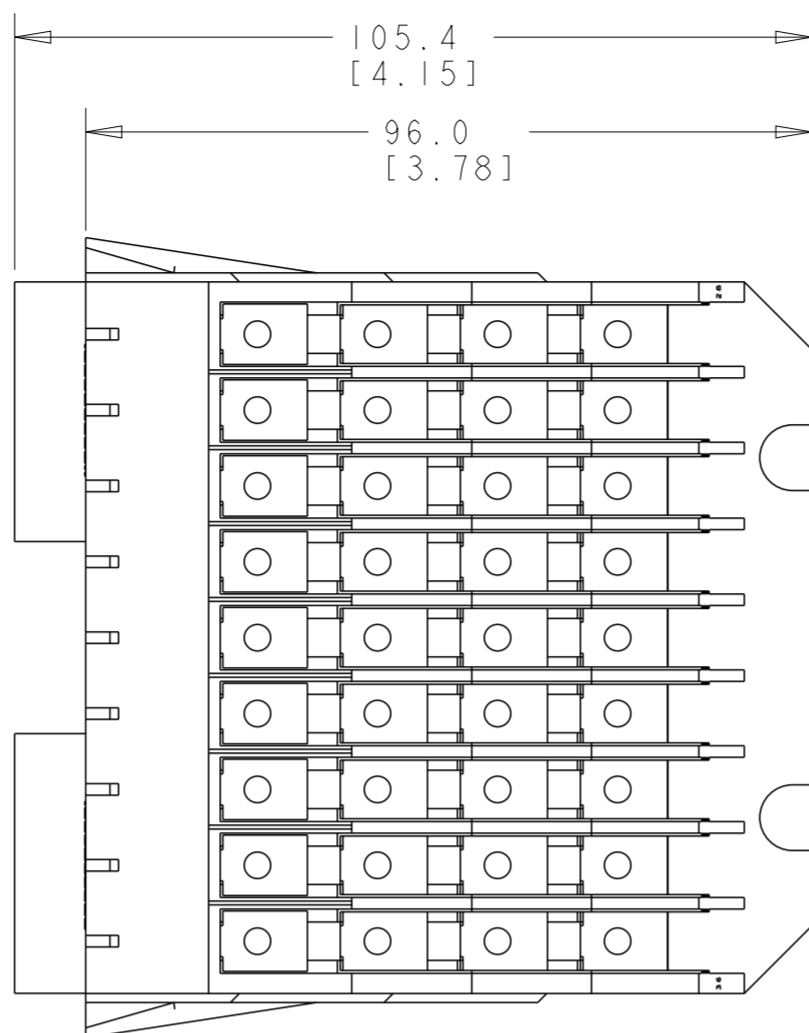
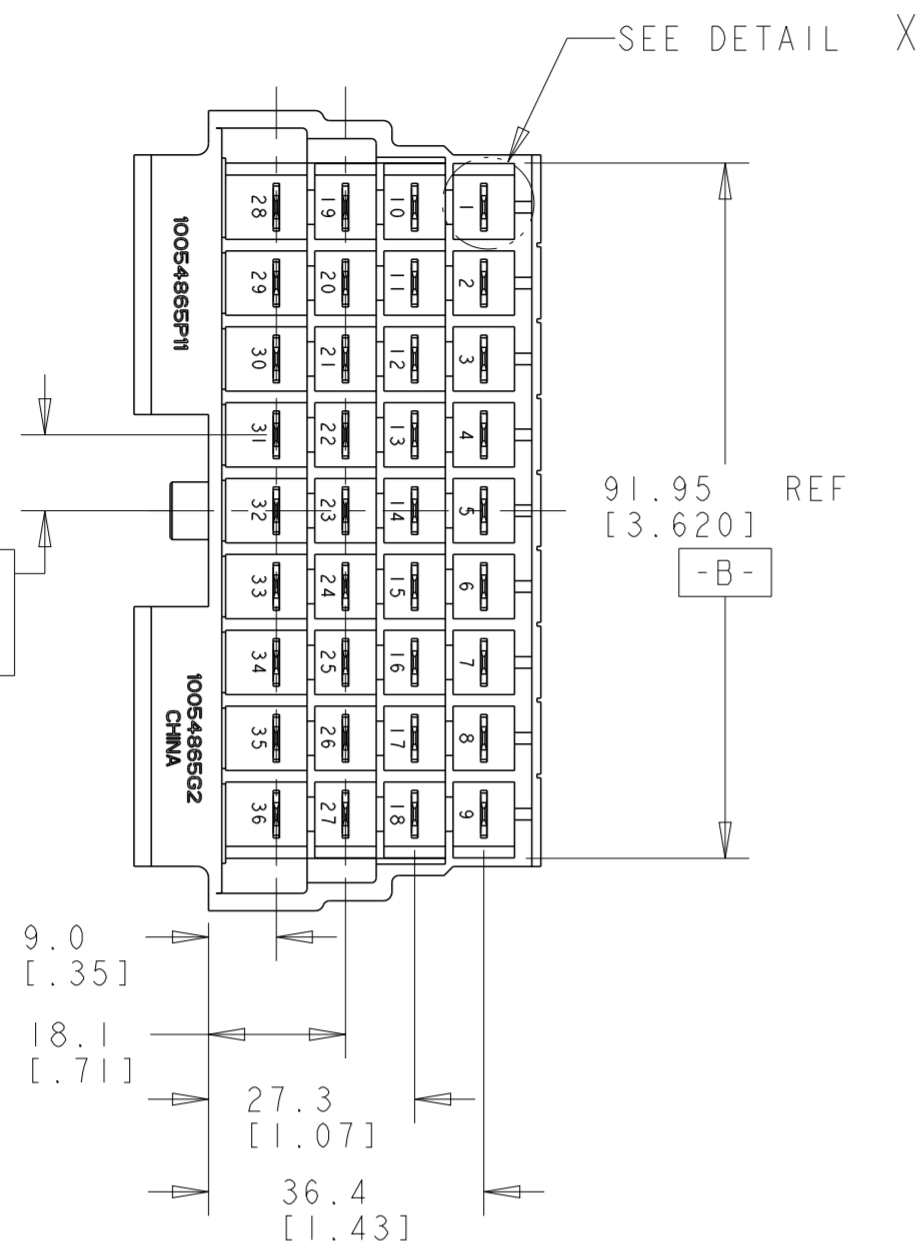
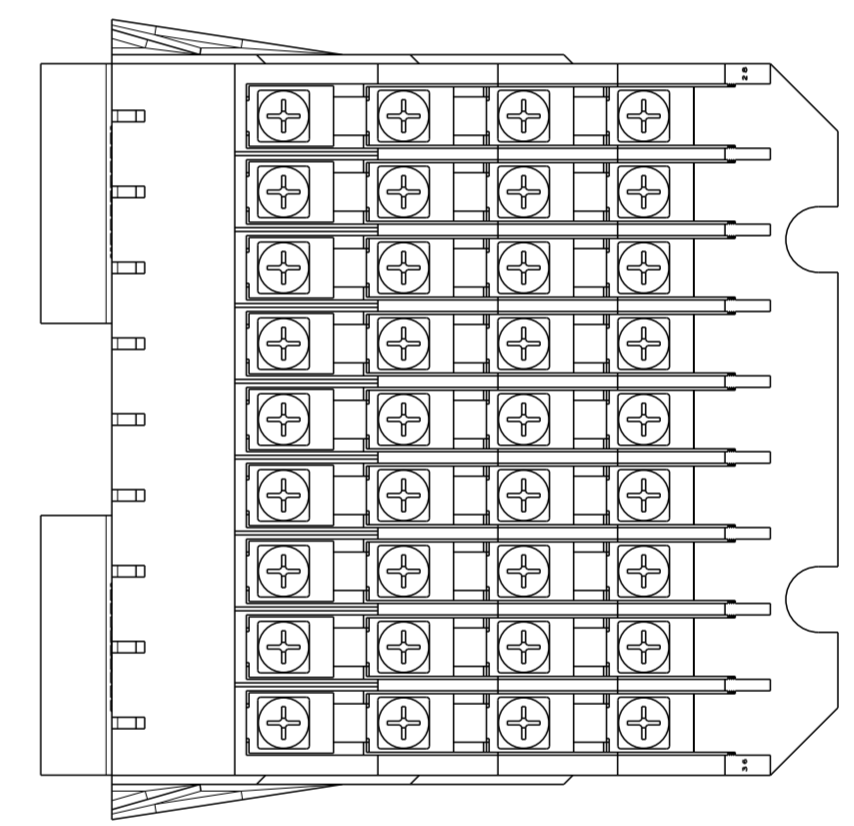
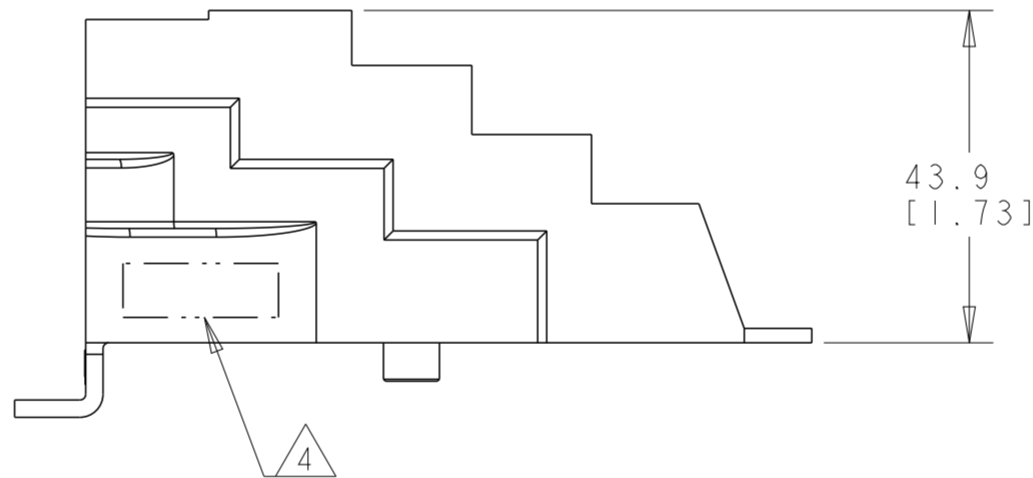
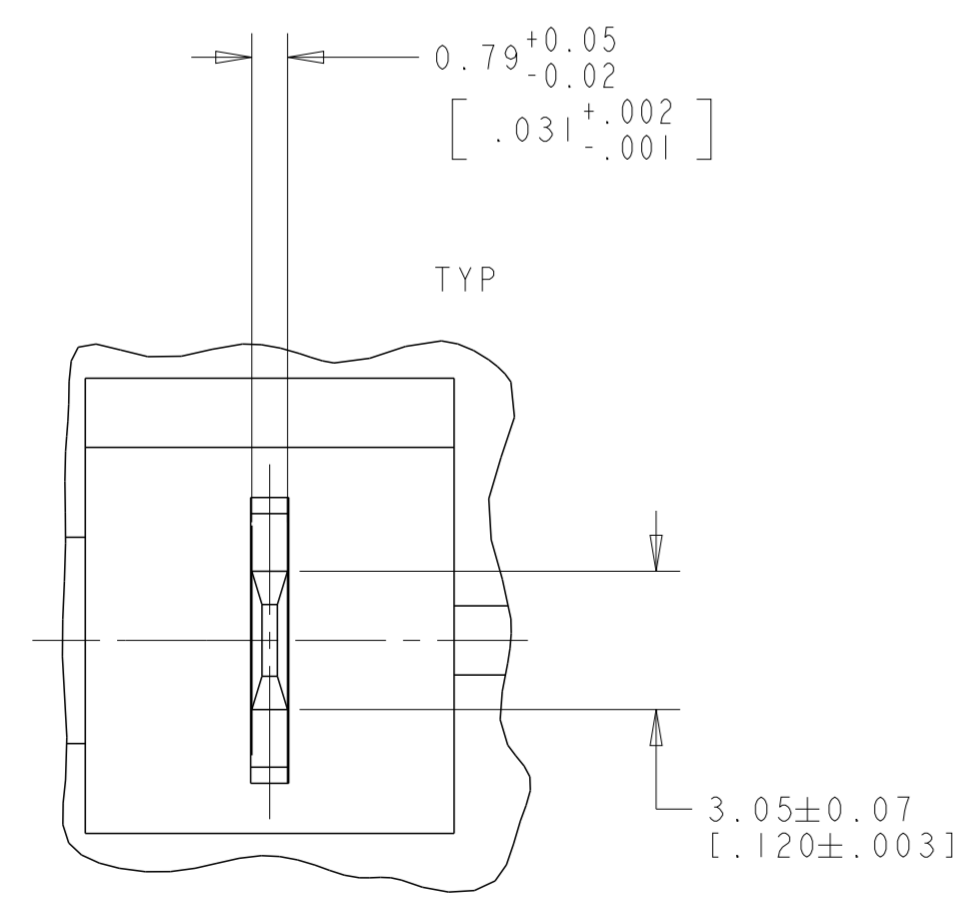


P	LTR	DESCRIPTION	DATE	DWN	APVD
	AI	DRAWING SUPERSEDED	01APR2020	DV	KV



1. MATING FORCE TO FEMALE CONNECTOR SHALL BE 10-20 LBS.
2. UNMATING FORCE TO FEMALE CONNECTOR SHALL BE 8 LBS MIN.
3. CONTACT PULLOUT FORCE FROM HOUSING SHALL BE 21 POUNDS MIN.
- 4 PRINT DATE CODE (YYWW), APPROXIMATELY AS SHOWN.
- 5 SMS SCREW MATERIAL: CARBON STEEL
FINISH: ZINC AND CHROMATE
- 6 SCREWS TORQUED TO 7-9 IN-LBS
- 7 PRELIMINARY PART NUMBER



SUPERSEDED BY
1546434-ABB

7	5	6	1546434-2
COMMENTS			PART NUMBER
			1546434-1

THIS DRAWING IS A CONTROLLED DOCUMENT.		DWN KIRAN, HOLA 24SEP2012	TE Connectivity	
DIMENSIONS: mm [INCHES]		CHK BRUBAKER, MARK 24SEP2012	ASSEMBLY, MALE, G.E. CONNECTOR	
TOLERANCES UNLESS OTHERWISE SPECIFIED:		APVD BRUBAKER, MARK 24SEP2012	NAME	
0 PLC ±		PRODUCT SPEC	-	
1 PLC ±0.0		APPLICATION SPEC	-	
2 PLC ±0.254 [0.01]		WEIGHT	-	
3 PLC ±0.127 [0.005]		SCALE	A2 00779 C-1546434	
4 PLC ±0.0508 [0.002]		RESTRICTED TO	-	
ANGLES ±		SCALE	1:1	
FINISH		SHEET	OF	
material_2	finish_spec_2	CUSTOMER DRAWING	REV	AI

DETAIL X
SCALE 6:1