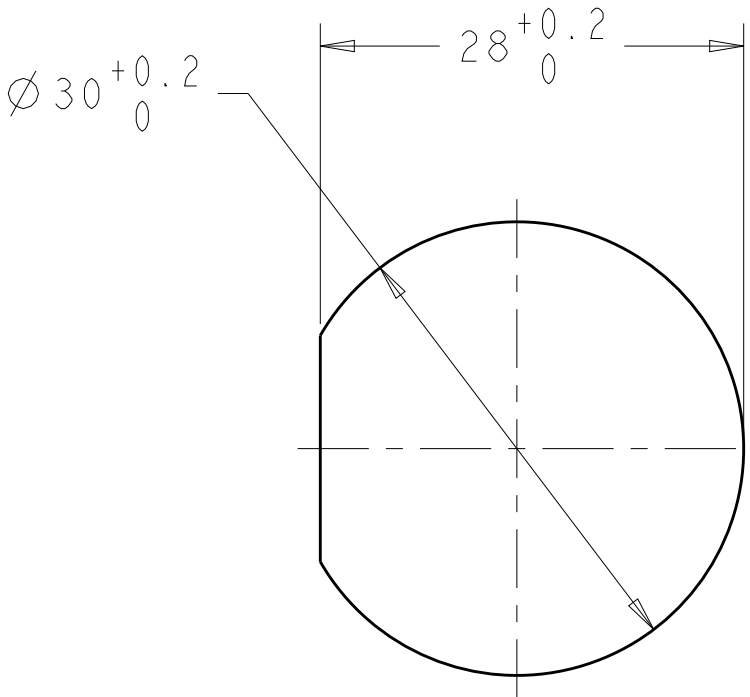
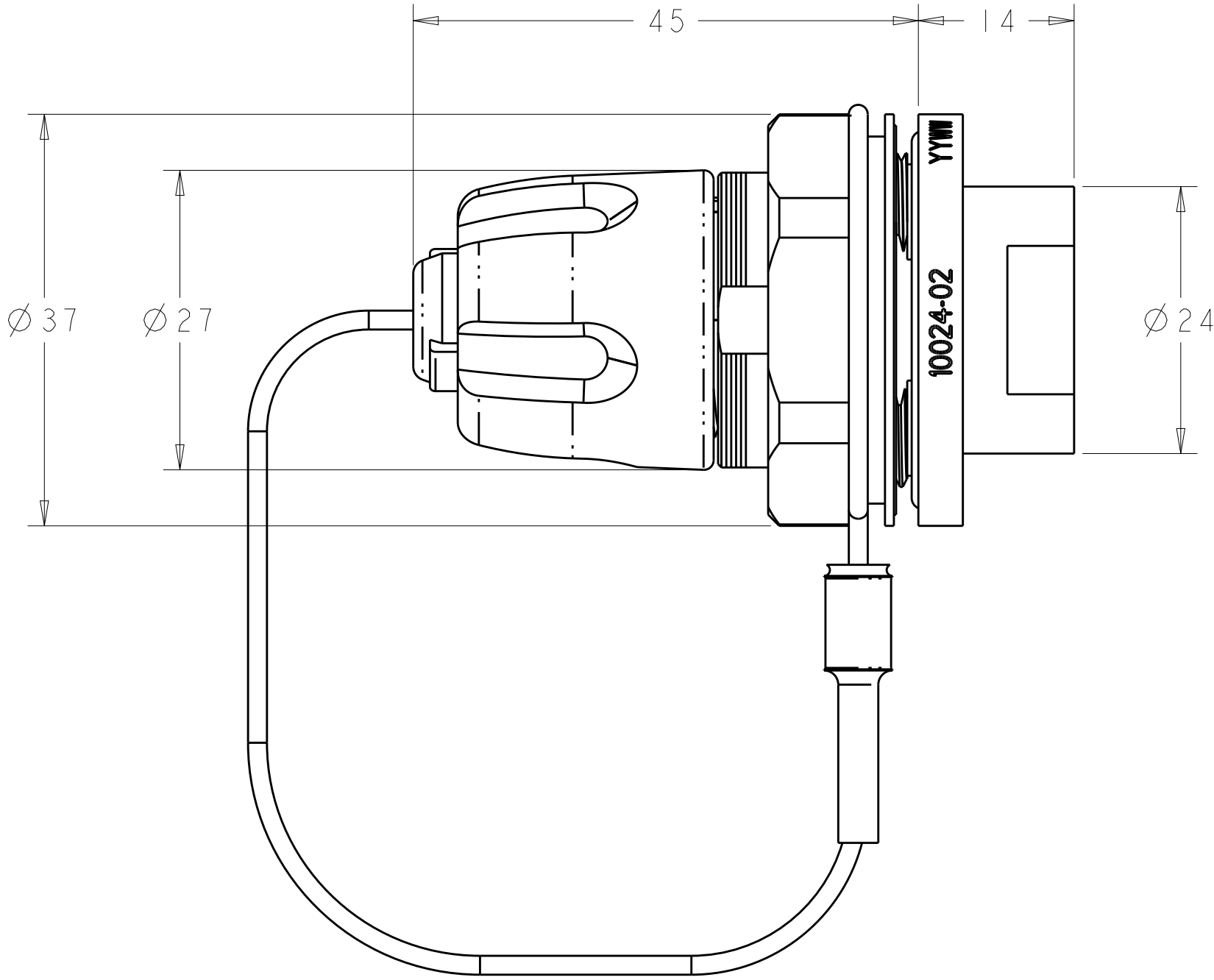



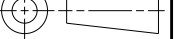
REVISIONS					
P	LTR	DESCRIPTION	DATE	DWN	APVD
	A	ECO-14-010306	11JUL2014	KG	DW
	B	ECR-15-011044	19AUG2015	KG	DW
	C	ECR-16-011849	25AUG2016	KG	DW

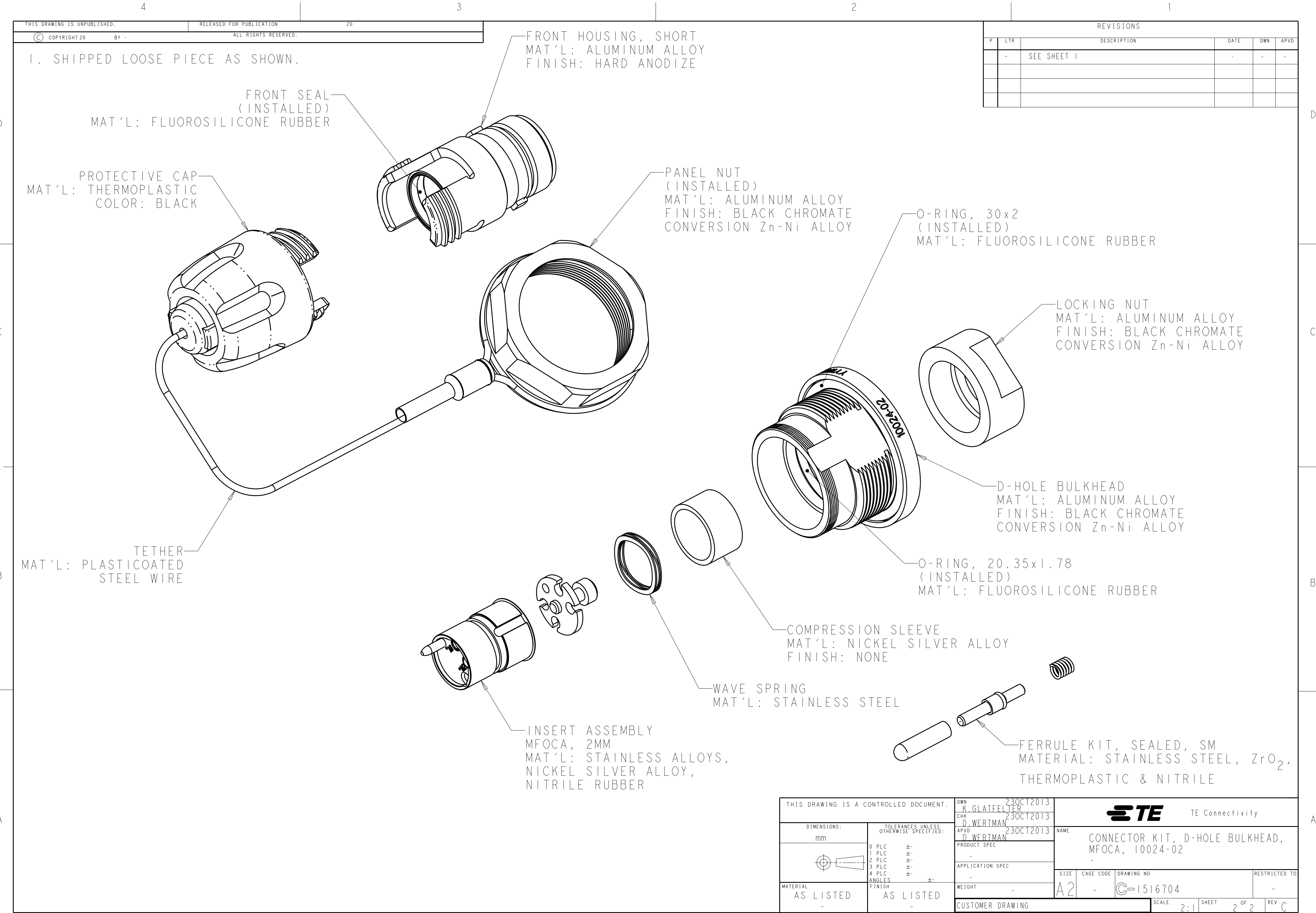
1. ASSEMBLY SHOWN FOR REFERENCE ONLY.  
SHIPPED LOOSE PIECE AS SHOWN ON PAGE 2.
2. ALL ASSEMBLY DIMENSIONS ARE FOR REFERENCE ONLY.
3. PANEL SHOULD BE BETWEEN 3mm AND 6.5mm THICKNESS.
4. REFER TO MIL-DTL-83526/21 AND DLA DRAWING NO. 10024  
FOR SPECIFIC DETAILS ABOUT THIS CONNECTOR.



3. RECOMMENDED PANEL CUT-OUT


10024-02	1516704-1
PIN	TE CONNECTIVITY PART NUMBER

THIS DRAWING IS A CONTROLLED DOCUMENT.		DWN K. GLATFELTER 23OCT2013	 TE Connectivity			
DIMENSIONS:		CHK D. WERTMAN 23OCT2013				
mm	TOLERANCES UNLESS OTHERWISE SPECIFIED:	APVD D. WERTMAN 23OCT2013	NAME			
	0 PLC ±	PRODUCT SPEC	CONNECTOR KIT, D-HOLE BULKHEAD, MFOCA, 10024-02			
	1 PLC ±	-	-			
	2 PLC ±	APPLICATION SPEC	-			
	3 PLC ±	-	SIZE	CAGE CODE	DRAWING NO	RESTRICTED TO
MATERIAL	FINISH	WEIGHT	DRAWING NO			
AS LISTED	AS LISTED	-	A2	-	C=1516704	-
CUSTOMER DRAWING			SCALE	SHEET	OF	REV
			2:1	1	2	C



1. SHIPPED LOOSE PIECE AS SHOWN.

REVISIONS					
P	LTR	DESCRIPTION	DATE	DWN	APVD
-	-	SEE SHEET 1	-	-	-

THIS DRAWING IS A CONTROLLED DOCUMENT.		DWN K. GLATFELTER 23OCT2013	 TE Connectivity		
DIMENSIONS: mm		CHK D. WERTMAN 23OCT2013			
TOLERANCES UNLESS OTHERWISE SPECIFIED:		APVD D. WERTMAN 23OCT2013	NAME CONNECTOR KIT, D-HOLE BULKHEAD, MFOCA, 10024-02		
0 PLC ± 1 PLC ± 2 PLC ± 3 PLC ± 4 PLC ± ANGLES ±		PRODUCT SPEC -	SIZE A2	CAGE CODE -	DRAWING NO. C-1516704
MATERIAL AS LISTED		APPLICATION SPEC -	RESTRICTED TO -		
FINISH AS LISTED		WEIGHT -	SCALE 2:1		
CUSTOMER DRAWING		SHEET 2 OF 2		REV C	