

1. ASSEMBLY SHOWN FOR REFERENCE ONLY.  
SHIPPED LOOSE PIECE AS SHOWN ON PAGE 2.  
PACKAGED AS SHOWN ON PAGE 3.

2. ALL DIMENSIONS ARE FOR REFERENCE ONLY.

3. FOR USE WITH SINGLE FIBER CABLE WITH 3.2mm  
MAXIMUM OUTSIDE JACKET DIAMETER.  
NOTE; INCREASE THE JACKET DIAMTER OF SMALLER CABLES WITH HEAT SHRINK TUBING TO 3.2mm MAXIMUM

4. SINGLEMODE USE AT BOTH 1310 AND 1550 WAVELENGTHS.

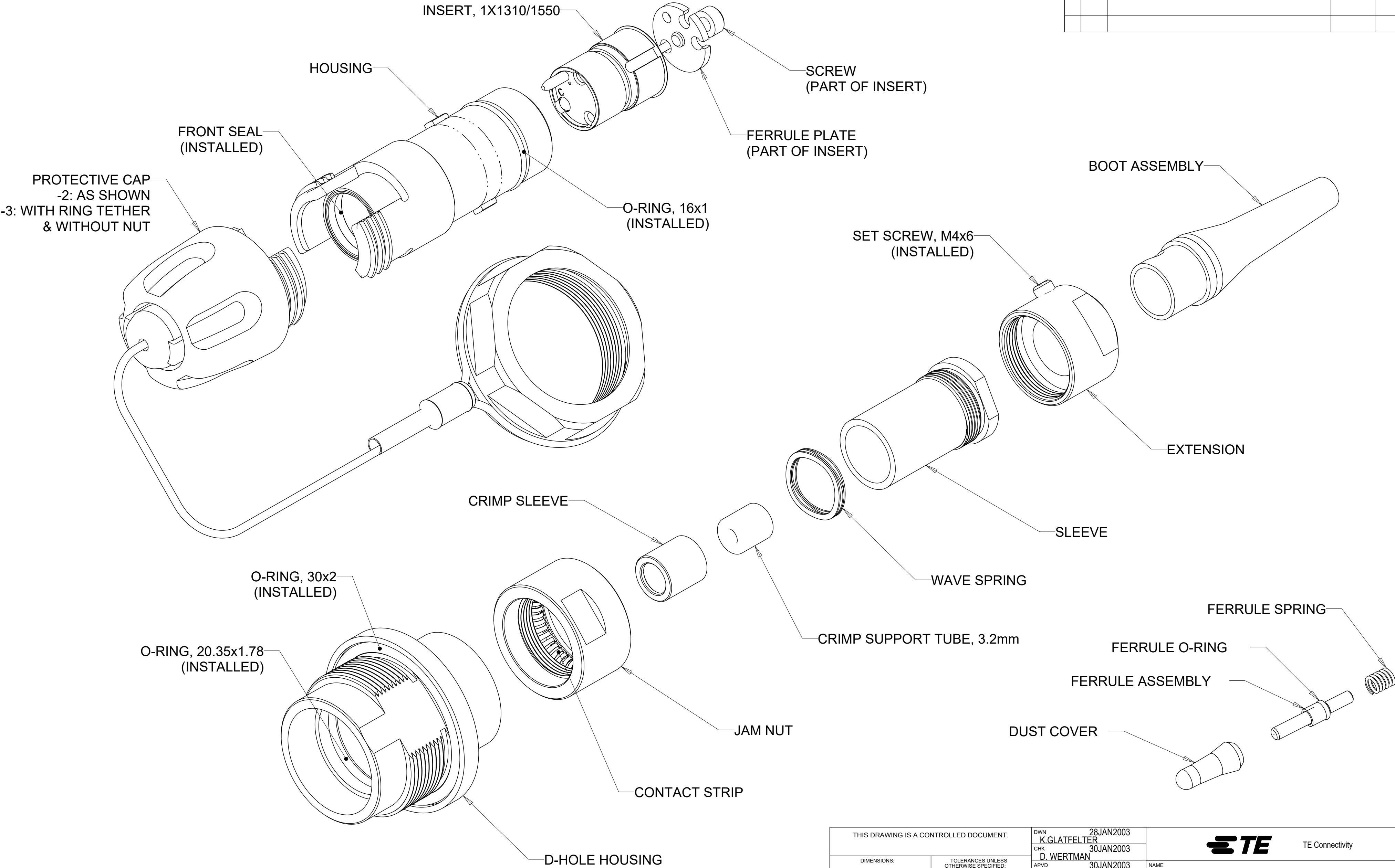
5. BLACK CHROMATE FINISH.


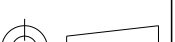
6 PANEL SHOULD BE BETWEEN 1mm AND 6.5mm THICKNESS.
- | P | LTR | DESCRIPTION              | DATE      | DWN | APVD |
|---|-----|--------------------------|-----------|-----|------|
| D |     | RELEASE PER 0A00-0029-03 | 31JAN03   | KG  | DW   |
| E |     | REVISE PER 0A00-0361-04  | 26AUG04   | KG  | DW   |
| F |     | REVISE PER ECR-18-015599 | 26OCT2018 | LN  | DW   |
| G |     | ECO-20-008200            | 16JUN2020 | TS  | DW   |
- 
- 1471-9 (3/13)

THIS DRAWING IS UNPUBLISHED.		RELEASED FOR PUBLICATION		20
COPYRIGHT 20	BY -	ALL RIGHTS RESERVED.		

REVISIONS					
P	LTR	DESCRIPTION	DATE	DWN	APVD
-	-	SEE SHEET 1	-	-	-

1. CONNECTOR SHIPPED LOOSE PIECE AS SHOWN.



THIS DRAWING IS A CONTROLLED DOCUMENT.		DWN K. GLATFELTER CHK D. WERTMAN APVD D. WERTMAN		28JAN2003 30JAN2003 30JAN2003		 TE Connectivity											
DIMENSIONS:		TOLERANCES UNLESS OTHERWISE SPECIFIED:		NAME CONNECTOR KIT, BULKHEAD, PRO BEAM JR, 1 CHANNEL, 1310/1550 nm 1310/1550nm SM													
mm																	
		0 PLC ±		PRODUCT SPEC - APPLICATION SPEC - WEIGHT -													
		1 PLC ±															
		2 PLC ±															
		3 PLC ±															
		4 PLC ±															
ANGLES ±		FINISH		SIZE A2		CAGE CODE 00779		DRAWING NO C=1515860		RESTRICTED TO -							
MATERIAL				CUSTOMER DRAWING								SCALE 2:1		SHEET 2 OF 2		REV G	
-		-															
-		-															