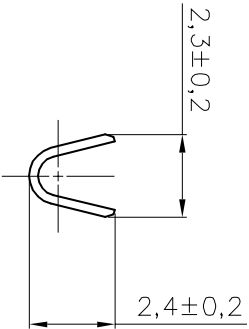
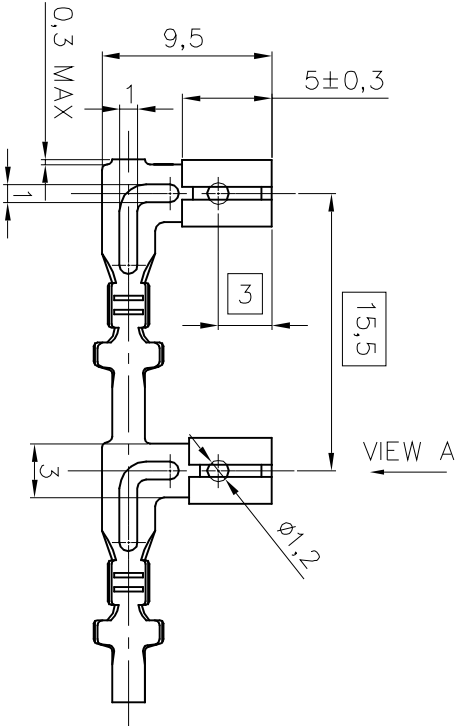


VIEW A
2 : 1



SECTION B-B
2 : 1



SECTION A-A
2 : 1

NOTES:

1. MATERIAL: COPPER ALLOY.
STRIP THICKNESS: 0.25 mm.
2. CONTINUOUS STRIP ON REELS.
3. APPLICATION DATA:
WIRE: 0.3~0.8 mm² (AWG# 18 ~ AWG# 22).
INSULATION: Ø 2.8 mm MAX.

DIST	LOC	P LTR	REVISION/RECORD	DATE	DNW	APVD

TOLERANCES UNLESS OTHER SPECIFIED:		DR		DATE		MATERIAL		FINISH	
0 PLG	± 0.20	DR	BOBIS WONG	DATE	28-9-2004	MATERIAL	△	FINISH	N/A
1 PLG	± 0.15	CHKD	BOBIS WONG	DATE	28-9-2004				
2 PLG	± 0.15	APVD	S. F. SHUM	DATE	28-9-2004				
3 PLG	± 0.15	PRODUCT SPEC							
ANGLE	±	APPLICATION SPEC							
DIMENSIONS IN mm		RESTRICTED TO		SCALE		SIZE		DWG NO.	
		114-58500		1:1		A5		C-1494217	
		NAME		110 FASTON ANGLED RECEPTACLE		SHEET		REV	
						1		0	

Tyco Electronics
 Tyco Electronics
 Hong Kong Limited
 Room 1301, Ocean Centre No.
 5 Canton Rd, Tsimshoai Kowloon
 Hong Kong

