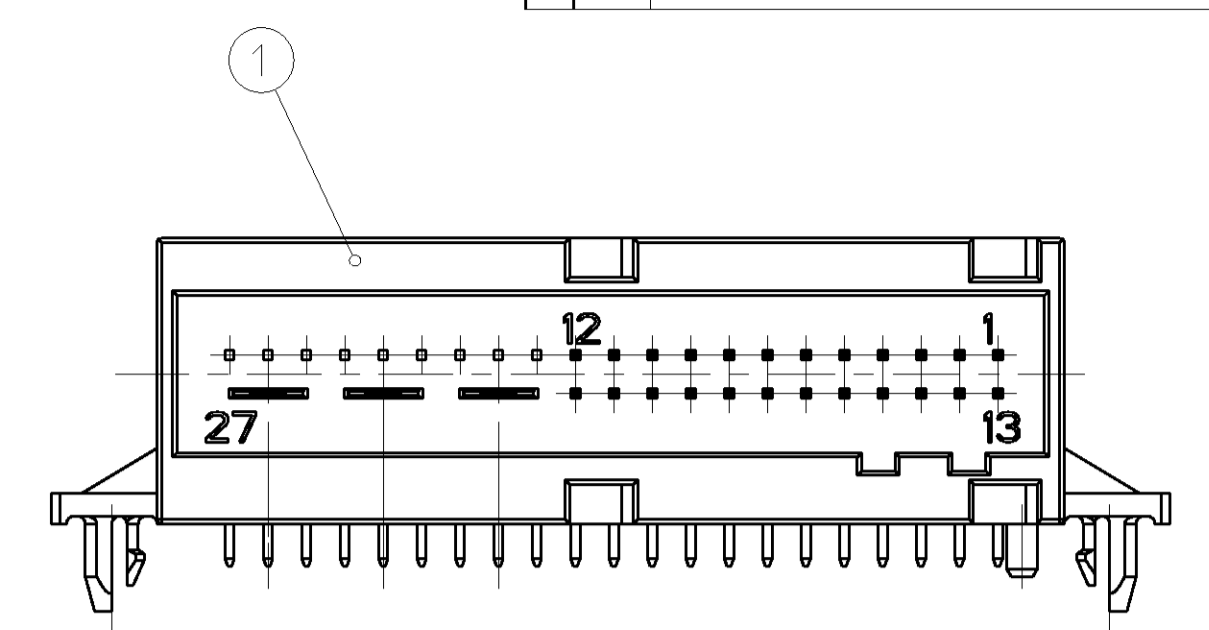
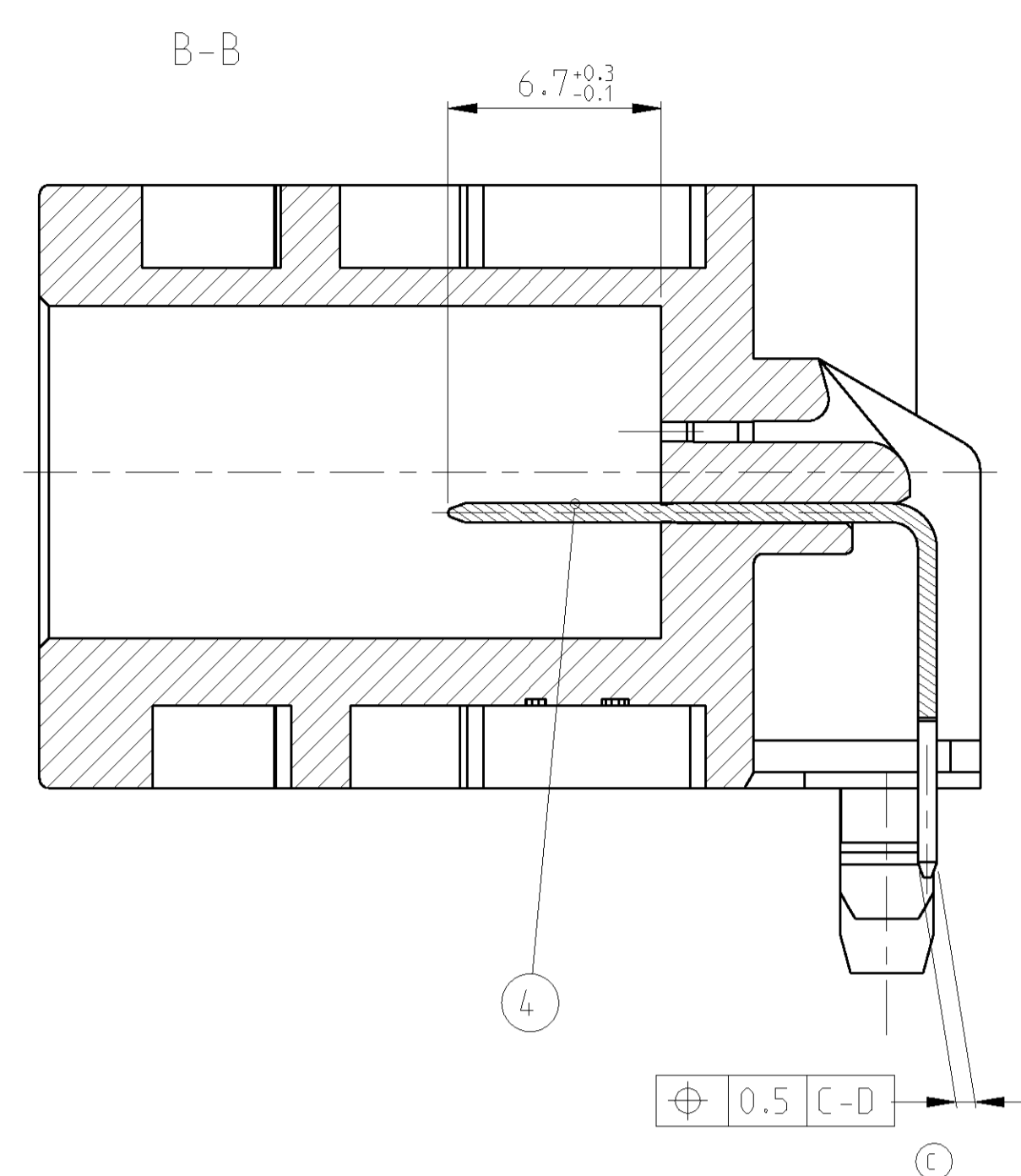
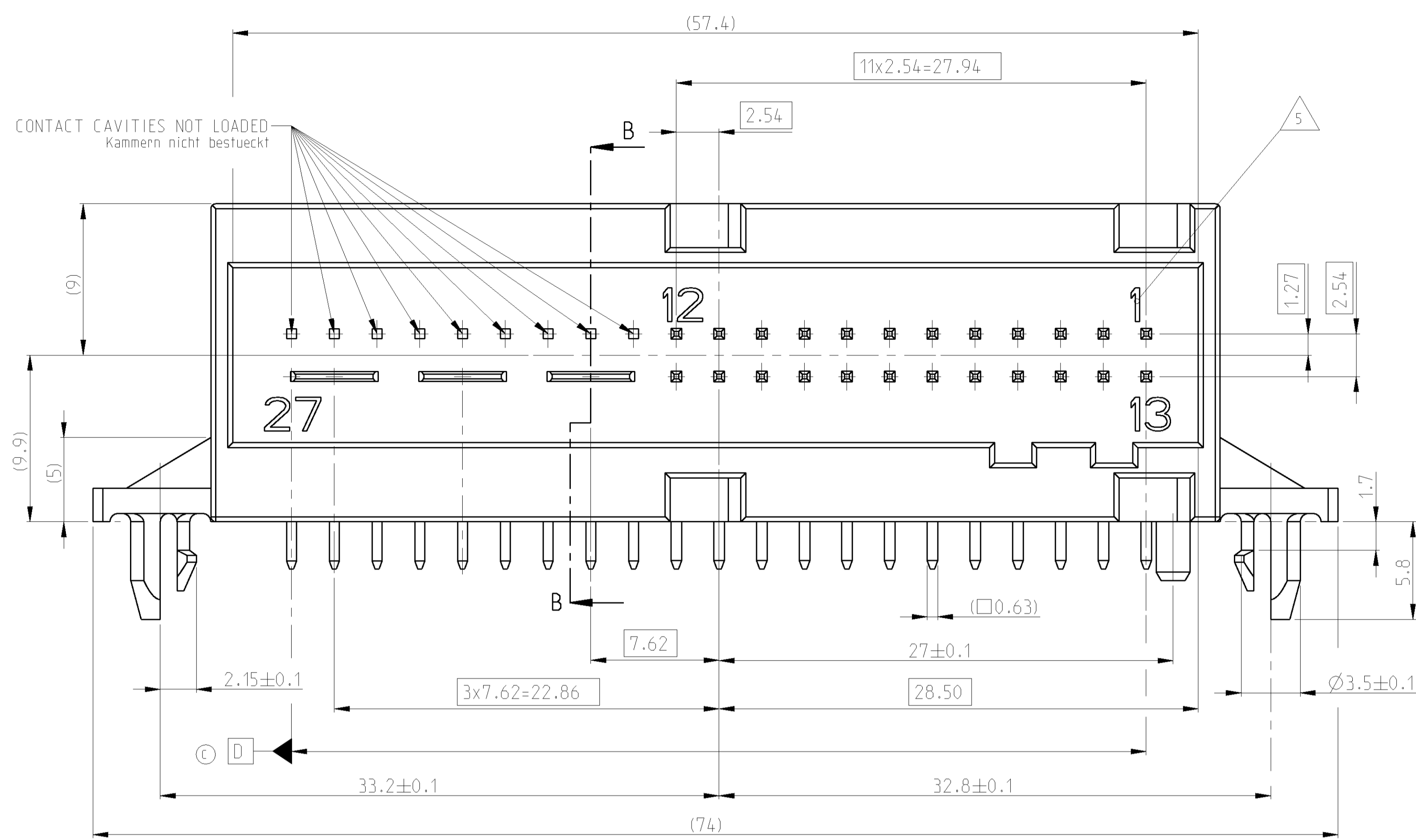
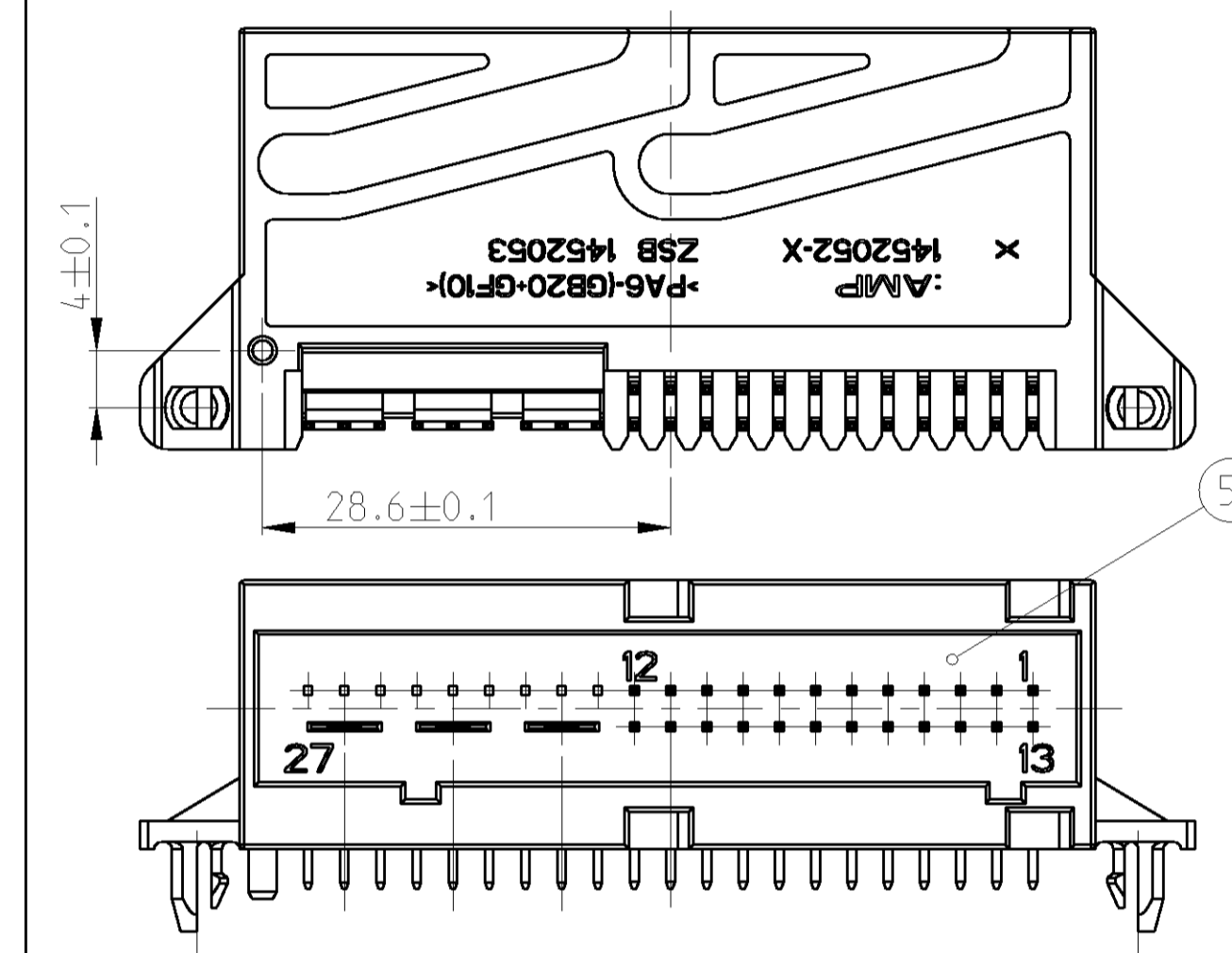


PROJECT NO.:  
EGAUT99403

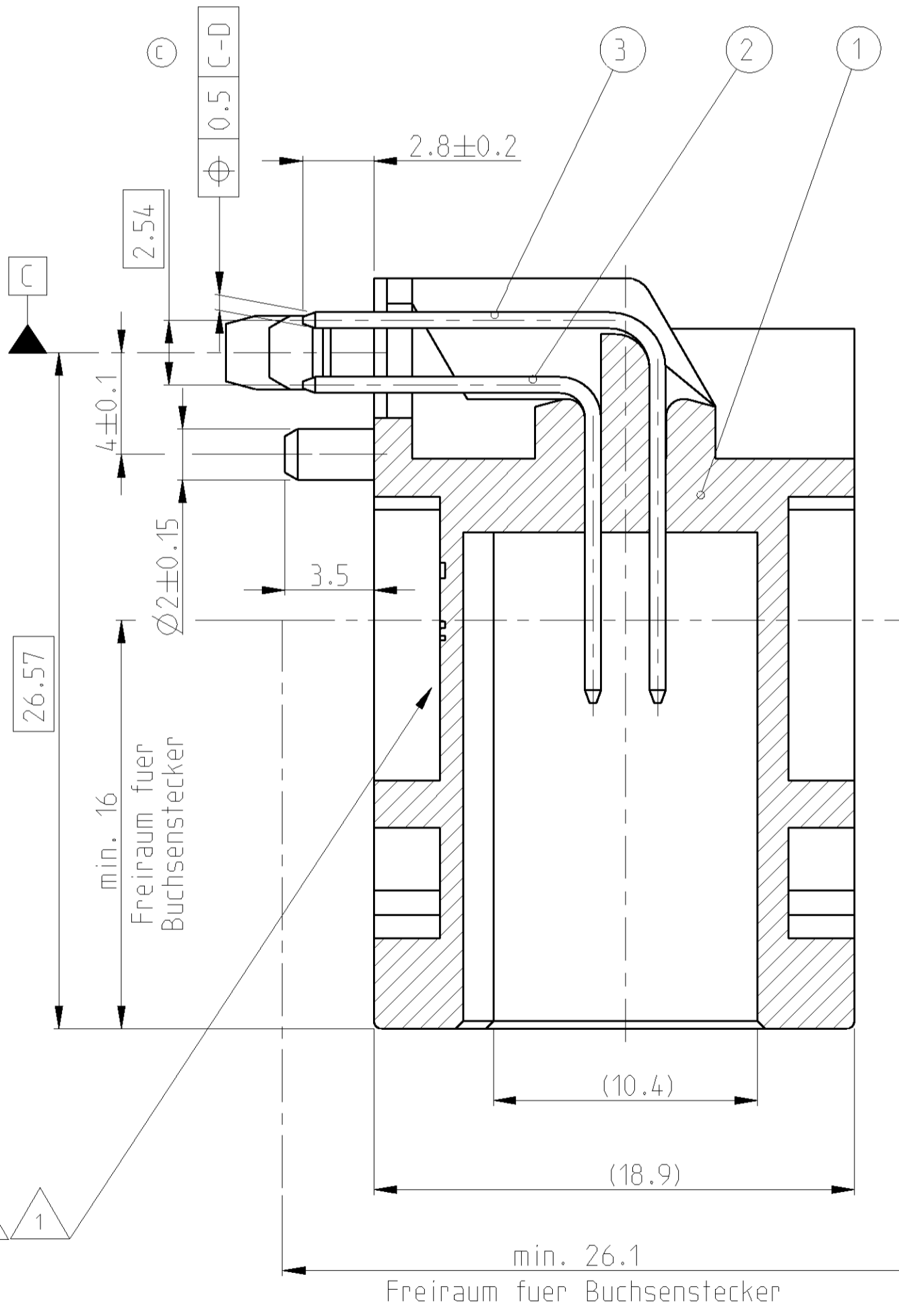
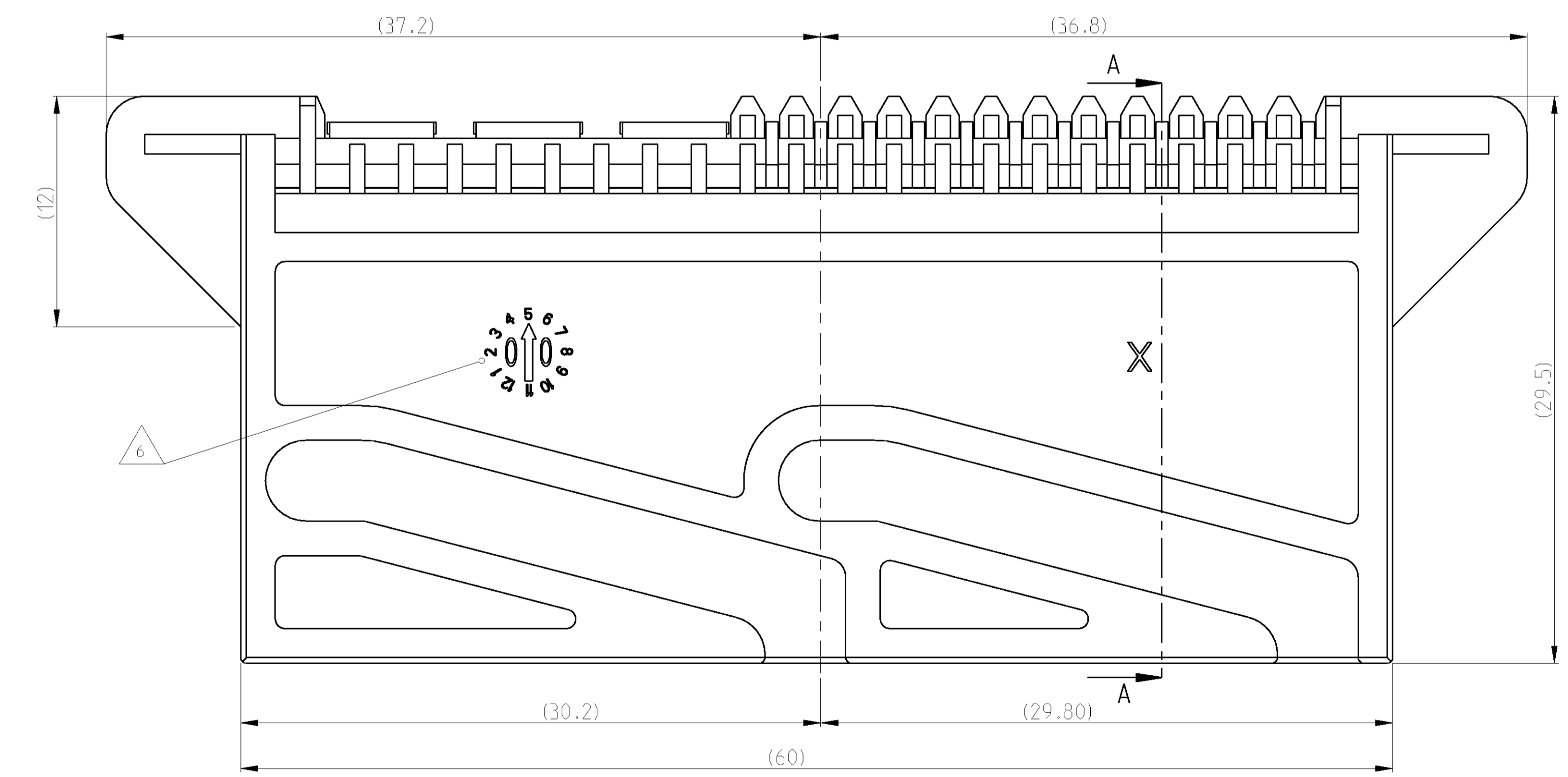
LOC	DIST	REV	DATE	BY	APPV
A1	-	A	01DEC2000	A.Ri	H.Sch
		B	28JAN2002	A.Ri	HSCH
		C	04APR2002	A.Ri	HSCH



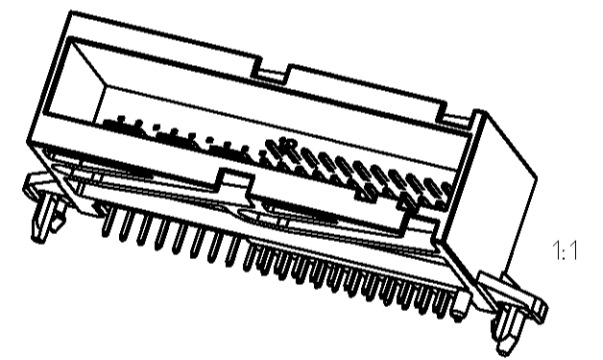
CODING A  
Kodierung A  
1452053-1  
2:1



CODING B  
Kodierung B  
1452053-2  
2:1



- NOTES  
BEMERKUNGEN
- 1 AMP-LOGO
  - 2 ORDER NUMBER  
BESTELL-NUMMER
  - 3 REVISION NUMBER  
WERKZEUGAENDERUNGSINDEX
  - 4 MATERIAL MARKING  
WERKSTOFFKENNZEICHNUNG
  - 5 CAVITY MARKING  
KAMMERNUMMIERUNG
  - 6 PRODUCTION DATE  
PRODUKTIONS DATUM



GEGENSTECKER COUNTERPARTS	STK. QTY.	BENENNUNG DESCRIPTION
0-1355543-2	1	COVER WITH SLIDE, 180° CABLEOUTLET, CODING B
0-1355543-1	1	COVER WITH SLIDE, 180° CABLEOUTLET, CODING A
0-1247728-2	1	MDS-RECEPTACLE HOUSING, 24x3POS., CODING B
0-1247728-1	1	MDS-RECEPTACLE HOUSING, 24x3POS., CODING A

ORDER NO. Bestell-Nr.	REV.	DESCRIPTION Beschreibung	QTY. Stck.	MATERIAL	SURFACE COLOR	ITEM NO.
1452053-2	C	TAB 5.2x0.6	3	CuSn0.15	TIN PLATED	4
		AMP MODU II PIN Lang	12	CuSn6	TIN PLATED	3
		AMP MODU II PIN kurz	12	CuSn6	TIN PLATED	2
		PIN HEADER 3x24POS., 90°, COD B	1	PA6-IGB20+GF10	BLUE	5
1452053-1	C	TAB 5.2x0.6	3	CuSn0.15	TIN PLATED	4
		AMP MODU II PIN Lang	12	CuSn6	TIN PLATED	3
		AMP MODU II PIN kurz	12	CuSn6	TIN PLATED	2
		PIN HEADER 3x24POS., 90°, COD A	1	PA6-IGB20+GF10	BLACK	1

DIMENSIONS: MASSENHEITEN: (mm)	TOLERANCES: ALLGEMEINER TOLERANZ: 0 PLC ±0.3 1 PLC ±0.3 2 PLC ±0.3 3 PLC ±0.3 4 PLC ±0.3 ANGLE SLOTTED SURFACE: ±0.1 FINISH/SLOTTED SURFACE/FARBE:	DWN: A.Richter CHK: H.Schmitt DATE: 01DEC2000 DATE: 06DEC2000	tyco Electronics AMP GmbH D - 64625 Bensheim
PRODUCT SPEC: 3XTAB 5.2/ 24x MODU II PIN HEADER 90 DEG.; ASS'Y 3x Flachstecker 5.2/ 24x MODU II Stiftwanne 90 Grad, kompl.	APPLICATION SPEC: VERARBEITUNGSPEZ.	NAME: 1452053	RESTRICTED TO: MR PUER
MATERIAL:	WEIGHT: BEWICHT	CUSTOMER DRAWING:	SCALE: 2:1 SHEET: 1 OF 1 REV: C