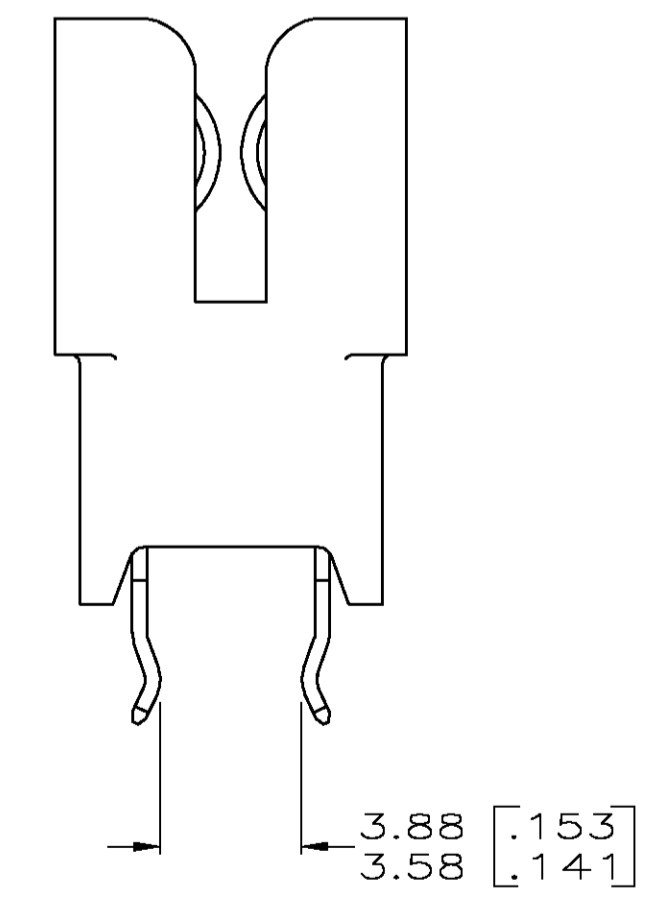
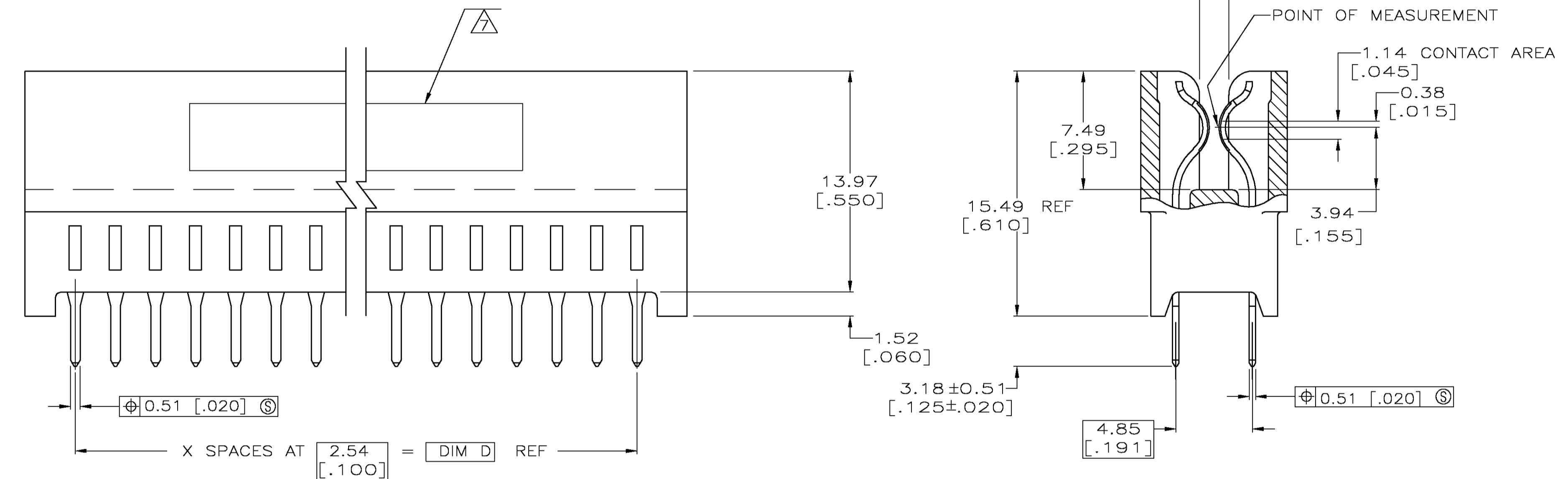


- ① HOUSING: GLASS FILLED POLYESTER; COLOR: BLACK.
- ② CONTACT: PHOSPHOR BRONZE.
- ③ NICKEL PLATE: 0.00127 [.000050] MIN - ALL OVER.
- ④ TIN-LEAD PLATE: 0.00254 [.000100] MIN - SOLDER POSTS.
- ⑤ GOLD PLATE: 0.00076 [.000030] MIN - CONTACT AREA.
- ⑥ NICKEL PLATE PER MIL-G-45204. GOLD PLATE PER QQ-N-290.
- ⑦ AMP PART NUMBER, DATE CODE (13 POSN ONLY) ARE MARKED IN APPROXIMATE AREA SHOWN. THE WORD MEXICO TO BE MARKED ON HOUSING (3 & 13 POSN).
- 8. RECOMMENDED PCB FINISHED HOLE DIA:  $1.02 \pm 0.08$  [.040  $\pm$  .003].
- 9. THE RETENTIVE FEATURE OF THIS CONNECTOR IS DESIGNED FOR FULL SEATING IN  $.062 \pm 0.008$  THICK CIRCUIT BOARDS. FOR APPLICATIONS IN BOARDS OF OTHER THICKNESSES CONTACT AMP INCORPORATED.



BOARD RETENTION FEATURE

⑤	3-6, 21-24	1.200 [30.48]	<del>1.400</del> [37.08]	1.450 [36.83]	12	13	145118-1
PLTG	BOARD RETENTION LOCATION	D	<del>B</del>	A	X	NO OF POSN	NUMBER

THIS DRAWING IS A CONTROLLED DOCUMENT.

DIMENSIONS:	TOLERANCES UNLESS OTHERWISE SPECIFIED:	DWN R. BROWN 1/11/95	Tyco Electronics Corporation Harrisburg, Pa 17105-3608
mm	0 PLG ± - 1 PLG ± - 2 PLG ± 0.13 [.005] 3 PLG ± - 4 PLG ± - ANGLES ± °	CHK J. DIORAZIO 1/11/95	
MATERIAL	FINISH	APVD	NAME
		PRODUCT SPEC	CONNECTOR ASSEMBLY, STANDARD EDGE II, 2.54 [.100]
		APPLICATION SPEC	108-9039
		SIZE	A1
		WEIGHT	00779
		CUSTOMER DRAWING	145118

SCALE 5:1 SHEET 1 OF 1 REV C