

4

3

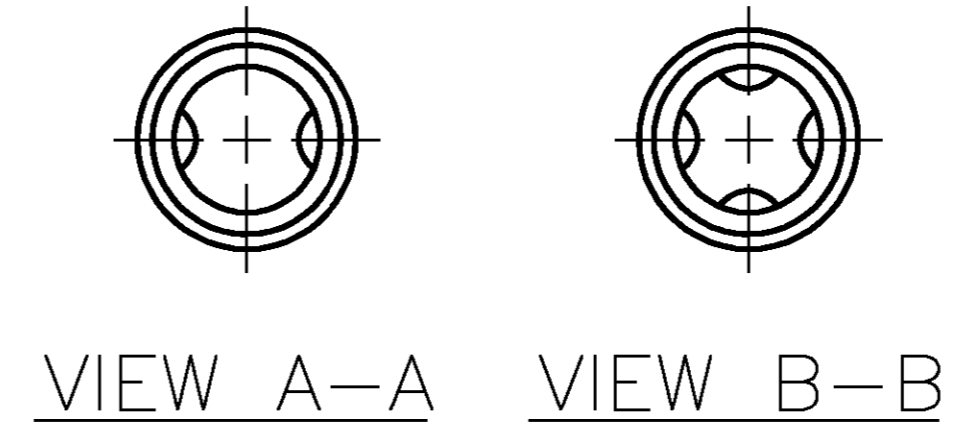
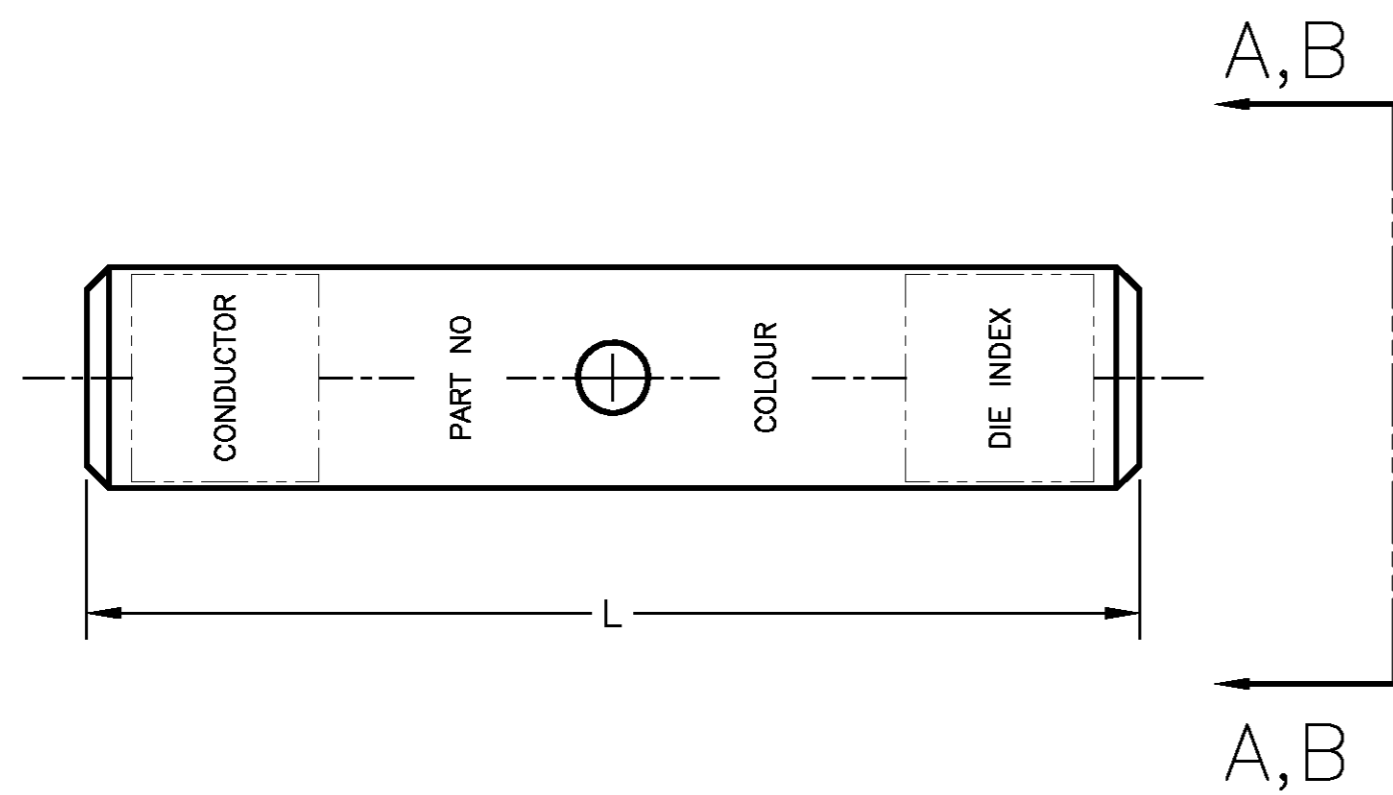
2

1

THIS DRAWING IS UNPUBLISHED. RELEASED FOR PUBLICATION
 © COPYRIGHT BY TYCO ELECTRONICS CORPORATION. ALL RIGHTS RESERVED.

LOC		DIST		REVISIONS			
P	LTR	DESCRIPTION		DATE	DWN	APVD	
GA	1	A1	REVISED PER EC LC20-0097-05		24 MAY 05	DR	BJ

1. DIMENSIONS ARE FOR REFERENCE ONLY.



2-1/8	1	-	4.28	27 (2)	WHITE	1000 MCM	1-1443402-7
1-7/8	1	-	3.75	24 (2)	BLACK	750 MCM	1-1443402-6
1-5/8	1	-	3.25	22 OR 472 (2)	GREEN	600 MCM	1-1443402-5
1-9/16	1	-	3.15	20 OR 299 (2)	BROWN	500 MCM	1-1443402-4
1-3/8	1	-	2.75	19 OR 470 (2)	BLUE	400 MCM	1-1443402-3
1-5/16	1	-	2.62	18 OR 324 (2)	RED	350 MCM	1-1443402-2
1-1/4	1	-	2.50	17 OR 298 (2)	WHITE	300 MCM	1-1443402-1
1-1/4	1	-	2.50	16 (1)	YELLOW	250 MCM	1-1443402-0
1-3/16	1	-	2.32	15 (1)	PURPLE	4/0 STR	1443402-9
1-3/16	1	-	2.32	14 (1)	ORANGE	3/0 STR	1443402-8
1-1/8	1	-	2.18	13 (1)	BLACK	2/0 STR	1443402-7
1-1/16	1	-	2.09	12 OR 348 (1)	PINK	1/0 STR	1443402-6
1-1/16	1	-	2.09	11 OR 375 (1)	GREEN	1 STR	1443402-5
1-1/16	1	-	2.09	10 (1)	BROWN	2 STR	1443402-4
1-1/16	-	1	2.09	9 (1)	WHITE	3 STR	1443402-3
1	-	1	2.00	8 OR 346 (1)	GRAY	4 STR	1443402-2
7/8	-	1	1.75	7 OR 374 (1)	BLUE	6 STR	1443402-1
WIRE STRIP LENGTH	VIEW B	VIEW A	L	DIE INDEX (NO OF CRIMPS)	COLOUR CODE	CONDUCTOR	PART NO

THIS DRAWING IS A CONTROLLED DOCUMENT.

DIMENSIONS: INCHES	TOLERANCES UNLESS OTHERWISE SPECIFIED:	DWR: C. DAVID 23 MAR 04	Tyco Electronics Corporation Markham, ON L3R 1E1
	0 PLC ± 1 PLC ± 2 PLC ± 3 PLC ± 4 PLC ± ANGLES ± 0.5°	CHK: P. CHAN 09 JUN 04	
MATERIAL: COPPER ALLOY	FINISH: TIN PLATE	APVD: B. JOHNSON 11 JUN 04	NAME: COMPRESSION BUTT SPLICE, COPPER, STANDARD BARREL, UTILUX
		APPLICATION SPEC	SIZE: A2
		WEIGHT	CAGE CODE: 00779
		CUSTOMER DRAWING	DRAWING NO: 1443402
		SCALE: NTS	RESTRICTED TO: 1 OF 1
			REV: A1