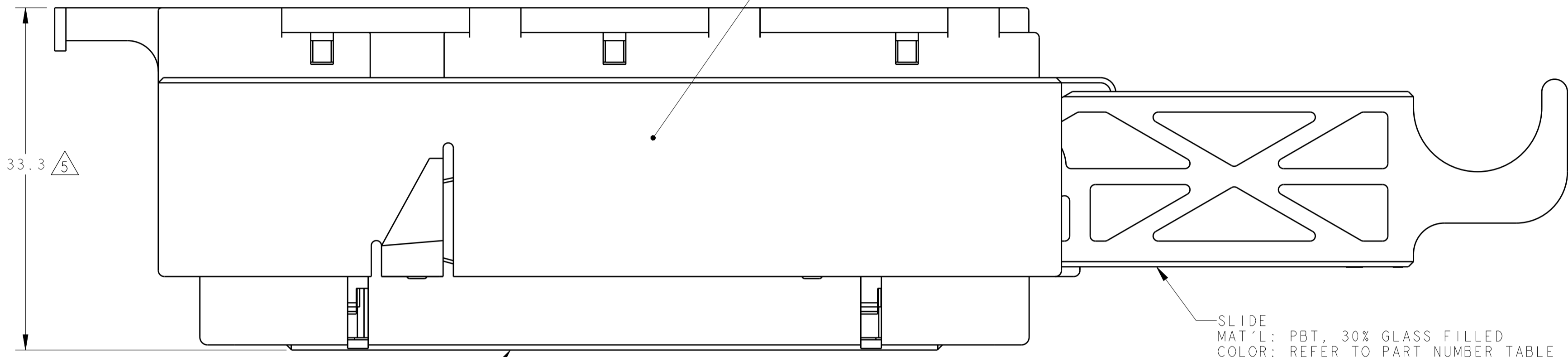


COMPANY LOGO

CIRCUIT IDENTIFICATION

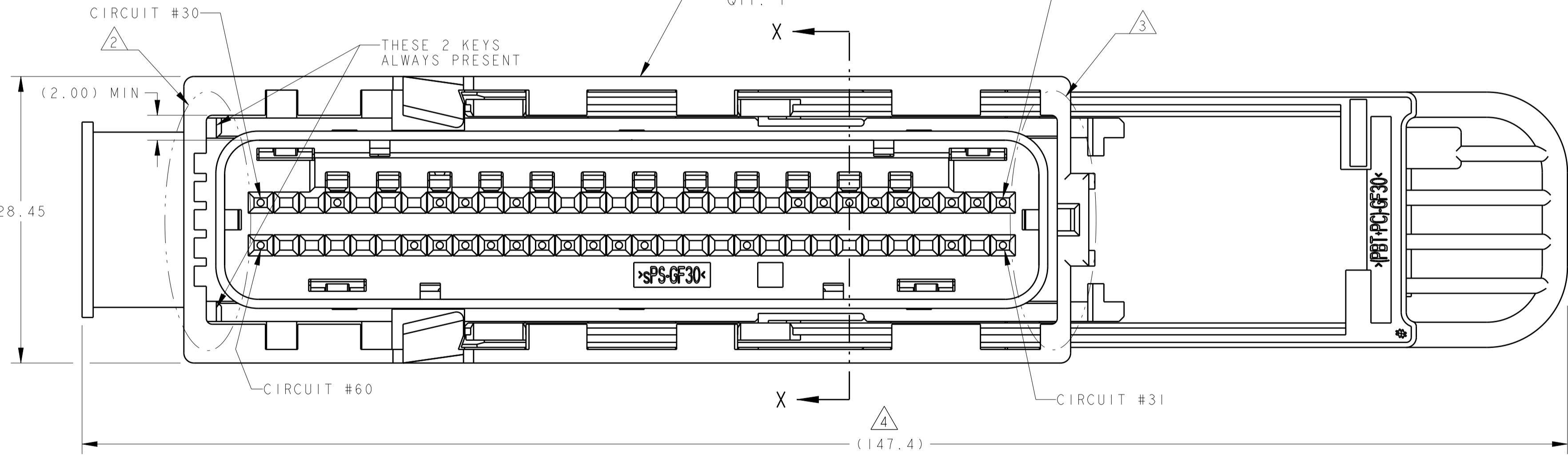


33.3

TPA
MAT'L: PBT, 30% GLASS FILLED
ALT MAT'L: sPS, 30% GLASS FILLED
COLOR: RED
QTY: 1

COVER
MAT'L: PBT, 30% GLASS FILLED
COLOR: BLACK
QTY: 1

SLIDE
MAT'L: PBT, 30% GLASS FILLED
COLOR: REFER TO PART NUMBER TABLE
QTY: 1



CIRCUIT #30

THESE 2 KEYS ALWAYS PRESENT

(2.00) MIN

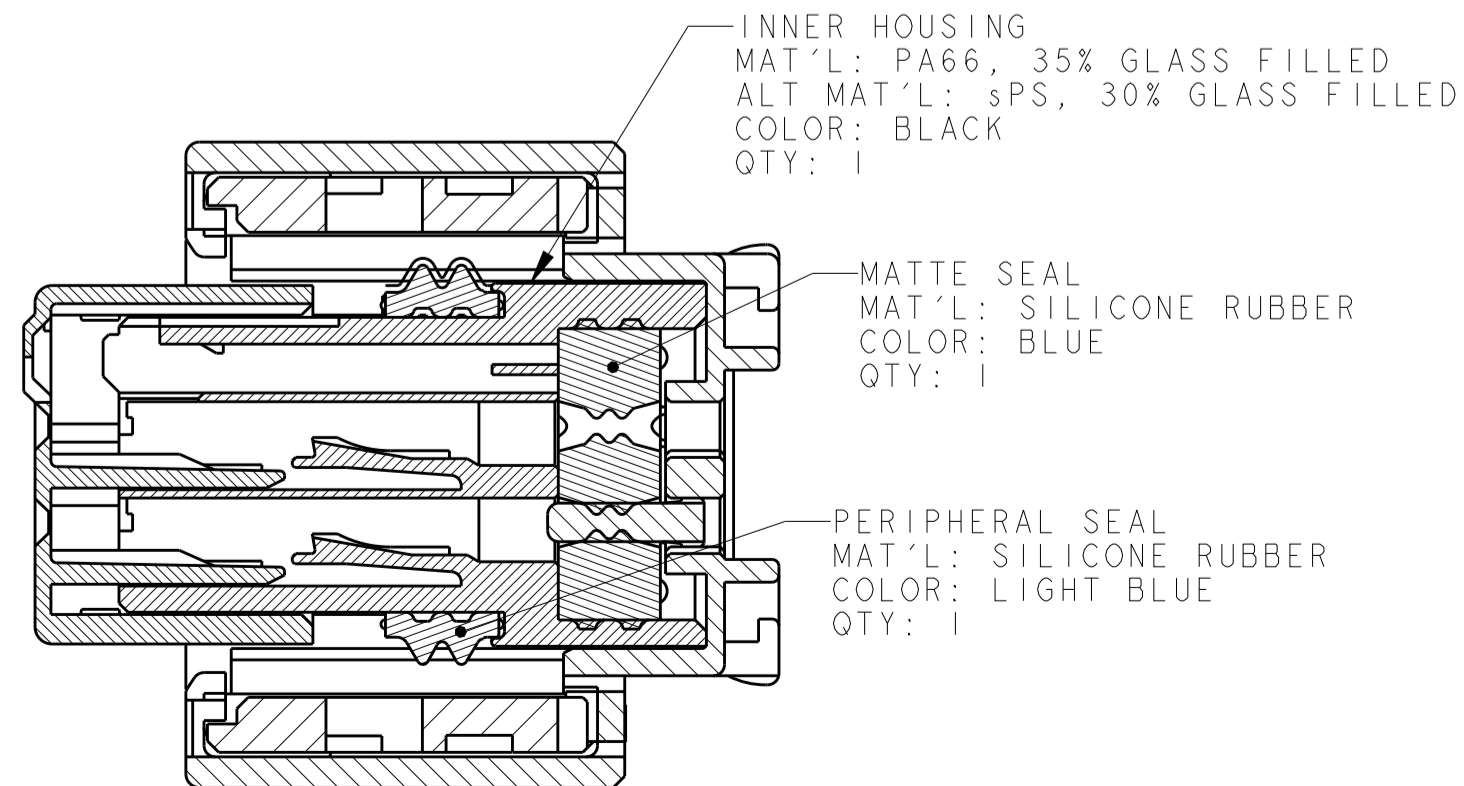
28.45

CIRCUIT #60

CIRCUIT #1

CIRCUIT #31

(147.4)



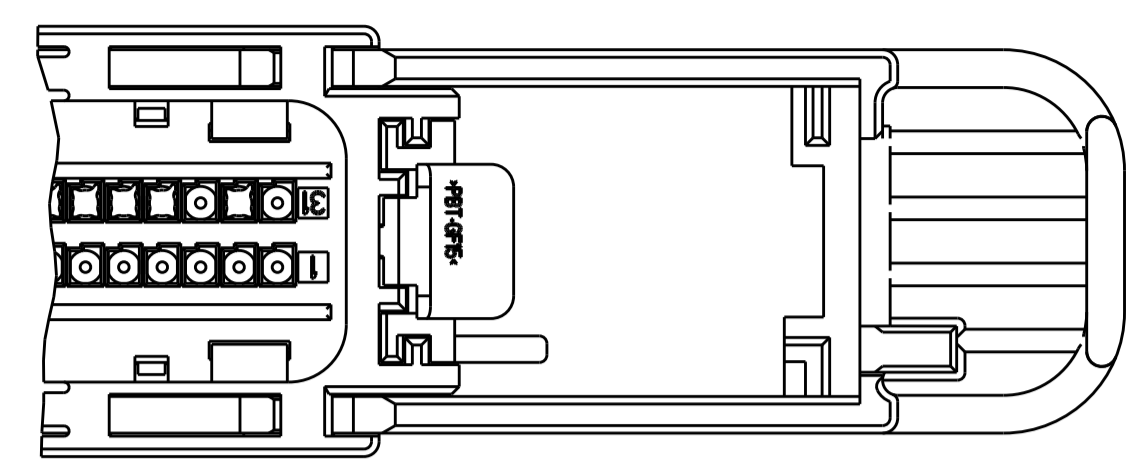
SECTION X-X

INNER HOUSING
MAT'L: PA66, 35% GLASS FILLED
ALT MAT'L: sPS, 30% GLASS FILLED
COLOR: BLACK
QTY: 1

MATTE SEAL
MAT'L: SILICONE RUBBER
COLOR: BLUE
QTY: 1

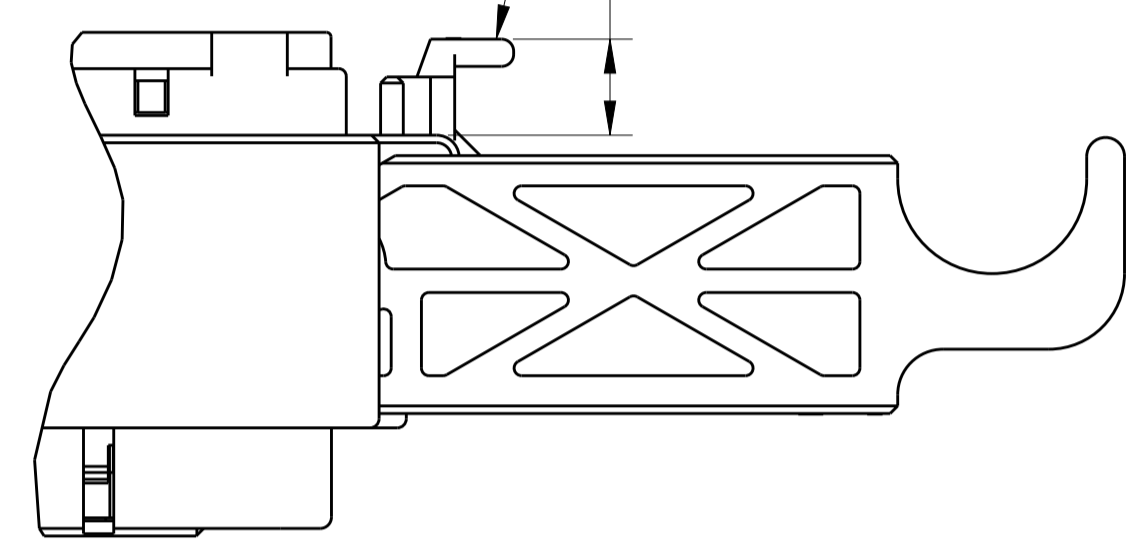
PERIPHERAL SEAL
MAT'L: SILICONE RUBBER
COLOR: LIGHT BLUE
QTY: 1

P/N 2-1438521-1 ONLY WITH CPA

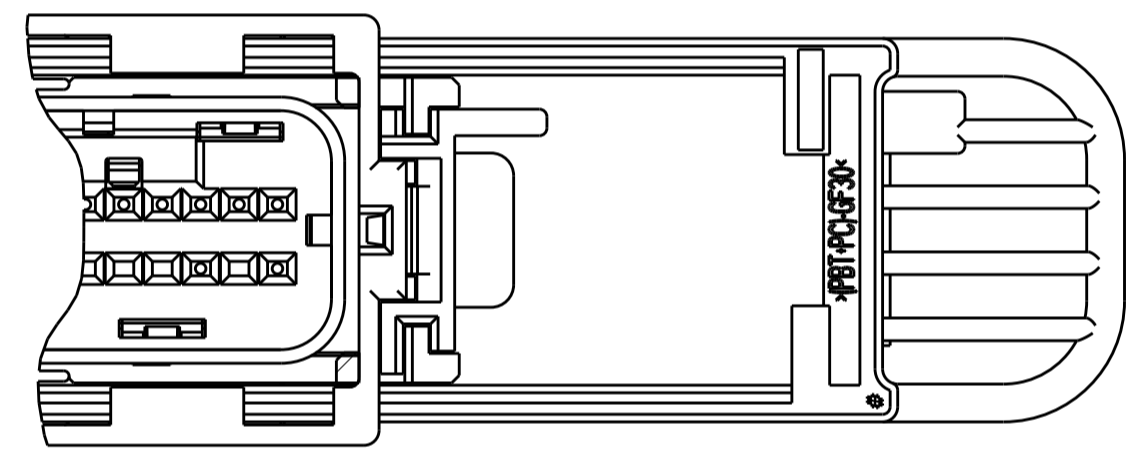


CPA
MAT'L: PBT, 15% GLASS FILLED
COLOR: RED
QTY: 1

(6.35)



SCALE 2:1



REVISIONS				
P.	LTN.	DESCRIPTION	DATE	OWN. APPROV.
E7		REVISED PER ECO-16-007761	20MAY2016	DLD WEM
E8		REVISED PER ECO-17-006621	09MAY2017	DLD WEM
E9		REVISED PER ECO-20-012412	08SEP2020	AP HDC

- 1. TE CONNECTIVITY (TE) PART NUMBER AND JULIAN DATE CODE MARKED ON THIS SIDE.
- 2. KEYING ARRANGEMENT TABLE FOR KEYWAY LOCATIONS, SEE SHEET 2.
- 3. KEYING ARRANGEMENT TABLE FOR KEY LOCATIONS, SEE SHEET 2.
- 4. SLIDE SHOWN IN UNLOCKED POSITION.
- 5. TPA SHOWN IN UNLOCKED POSITION.
- 6. MISCELLANEOUS COMPONENT ENGAGE/DISENGAGE FORCE, SAE/USCAR-2, SECTION 5.4.4.4. TPA (PRE-SET TO FULL) FORCES (15 TO 55 NEWTONS)
- 7. APPLICABLE TE GET FEMALE TERMINALS:
FOR 0.22/0.35 WIRE SECTION,
TERMINAL PART NUMBER 1393364-2 (GOLD)
FOR 0.50/0.75 WIRE SECTION,
TERMINAL PART NUMBER 1393365-2 (GOLD)
FOR 0.22/0.35 WIRE SECTION,
TERMINAL PART NUMBER 1393367-1 (TIN)
FOR 0.50/0.75 WIRE SECTION,
TERMINAL PART NUMBER 1393366-1 (TIN)
- 8. REFER TO POGO PIN FOR GET SOCKET TERMINAL ON TE DRAWING #114-18411 FOR CONTINUITY TESTING.
- 9. NOT FOR PRODUCTION USE.
- 10. CPA ASSEMBLED IN UNLOCKED POSITION.

9	SLIDE COLOR	CIRCUIT ARRANGEMENT (SEE TABLE ON SHEET 2)	KEYING ARRANGEMENT (SEE TABLE ON SHEET 2)	PART NUMBER
	BLACK	C3	K99	9-1438521-8
	BLACK	C143	K1	2-1438521-8
	BLACK	C142	K1	2-1438521-7
	BLACK	C141	K1	2-1438521-6
	BLACK	C140	K1	2-1438521-5
	BLACK	C139	K1	2-1438521-4
	BLACK	C138	K1	2-1438521-2
10	BLACK	C137	K1	2-1438521-1
	BLACK	C136	K1	2-1438521-0
	BLACK	C132	K1	1-1438521-7
	BLACK	C131	K1	1-1438521-6
	BLACK	C129	K1	1-1438521-5
	BLACK	C128	K1	1-1438521-4
	BLACK	C127	K1	1-1438521-3
	BLACK	C122	K1	1-1438521-2
	BLACK	C115	K1	1-1438521-1
	BLACK	C109	K1	1-1438521-0
	OBSOLETE	BLACK	C108	1-1438521-9
	BLACK	C107	K1	1438521-8
	OBSOLETE	GRAY	C75	1438521-7
	OBSOLETE	BLACK	C74	1438521-6
	BLACK	C73	K1	1438521-5
	BLACK	C62	K1	1438521-4
	BLACK	C61	K1	1438521-3
	BLACK	C49	K1	1438521-2
	BLACK	C3	K1	1438521-1

THIS DRAWING IS A CONTROLLED DOCUMENT. OWN: DL DRUMMOND, DATE: 11FEB2005. CHK: AJ VALASEK, DATE: 11FEB2005. APVD: AJ VALASEK, DATE: 11FEB2005.

DIMENSIONS: mm. TOLERANCES UNLESS OTHERWISE SPECIFIED: 0 PLC ±, 1 PLC ±0.5, 2 PLC ±0.20, 3 PLC ±, 4 PLC ±, ANGLES ±.

MATERIAL: SEE CALLOUT. FINISH: SEE CALLOUT.

WEIGHT: 114-13060. CUSTOMER DRAWING.

SCALE: 1:1. SHEET 1 OF 3. REV: E9.

ASSEMBLY, FEMALE, 60 WAY GET, TCM, CONNECTOR.

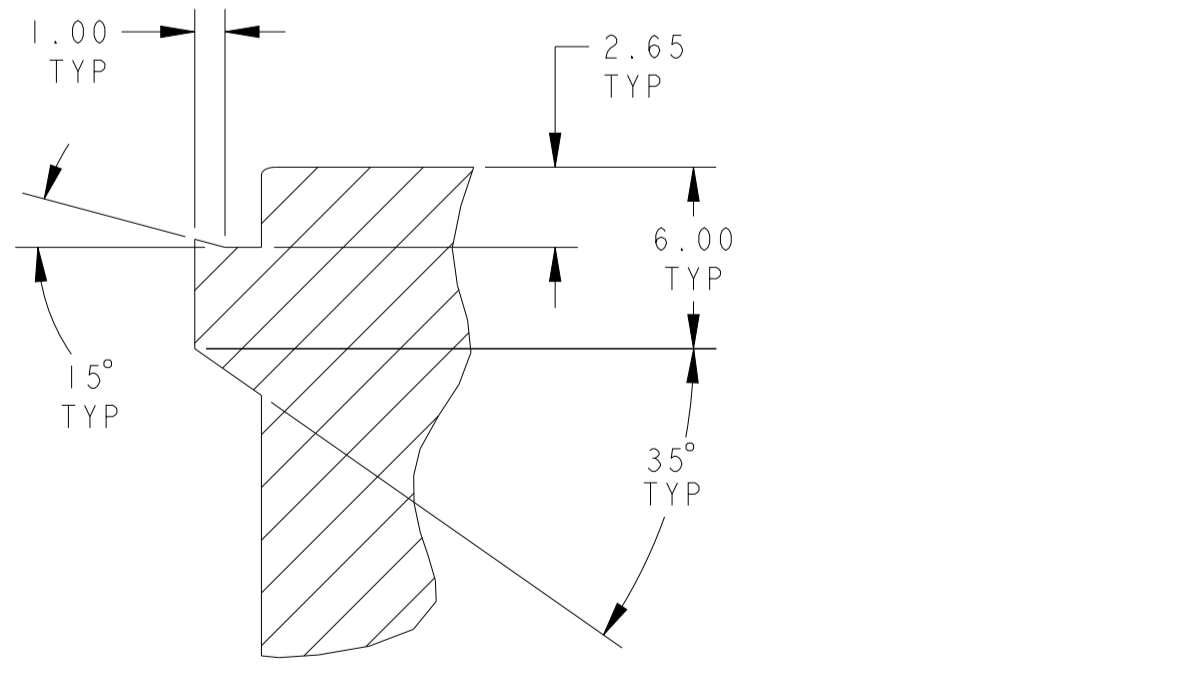
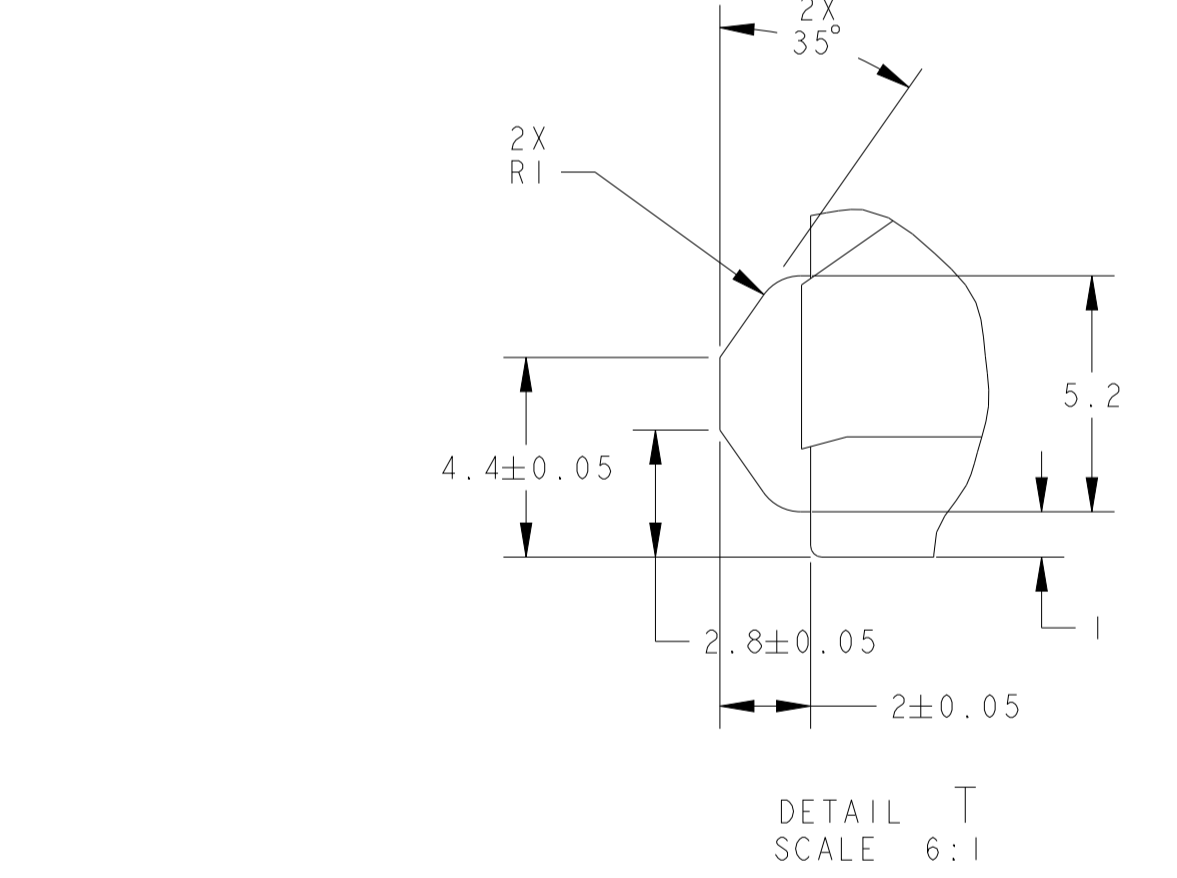
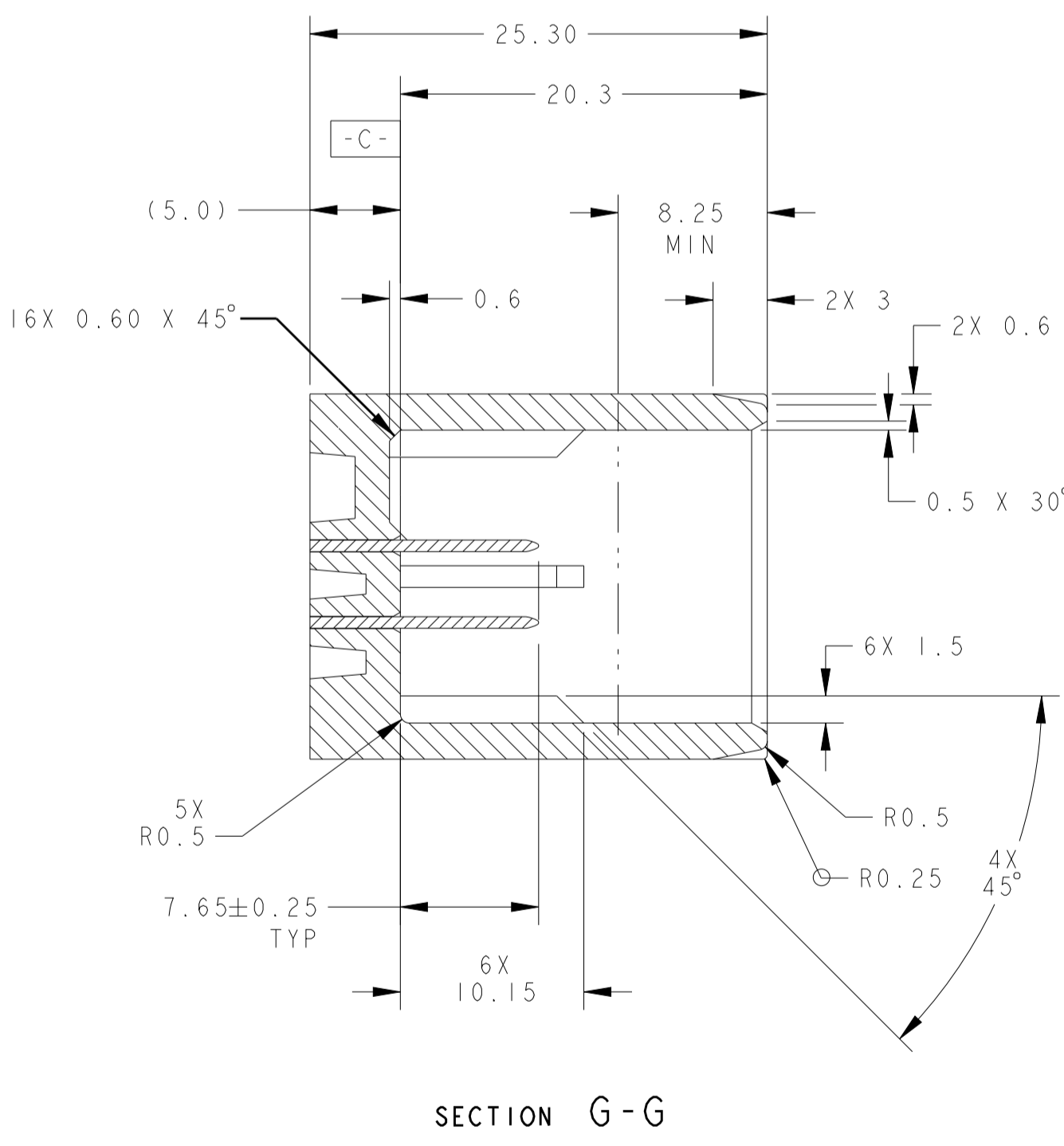
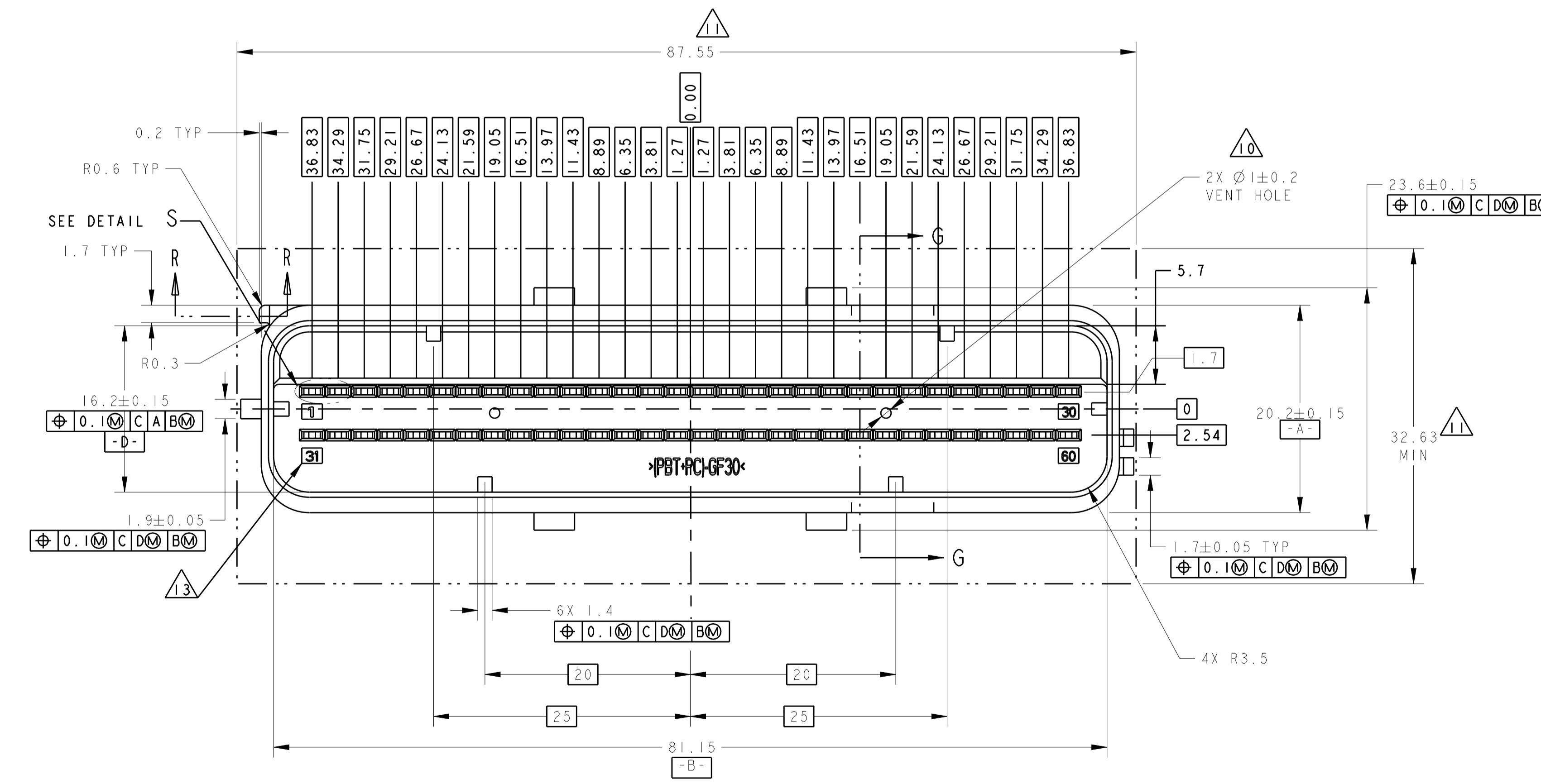
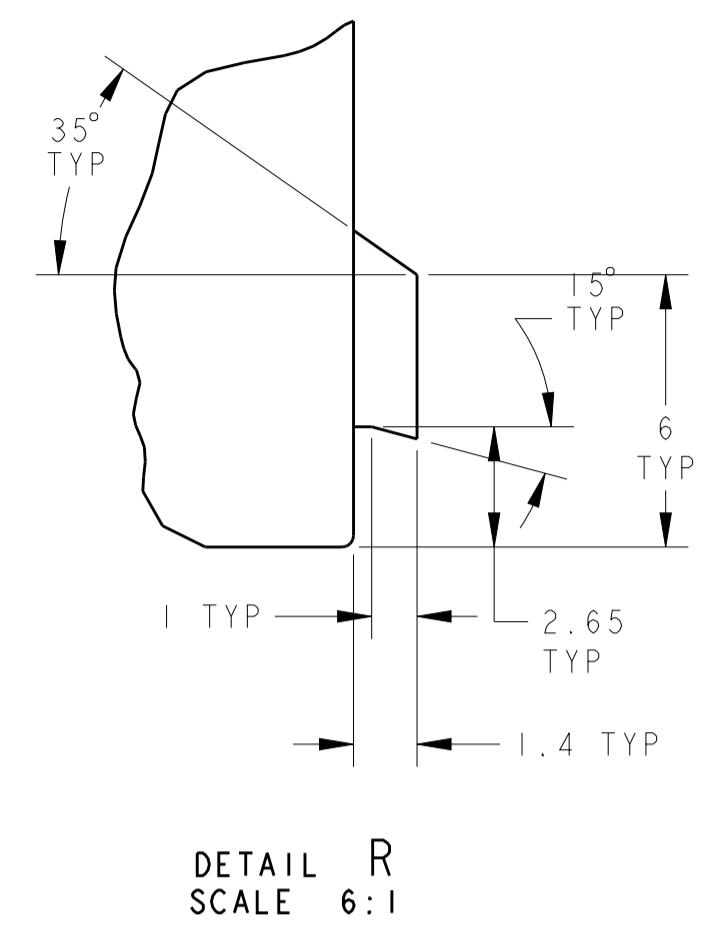
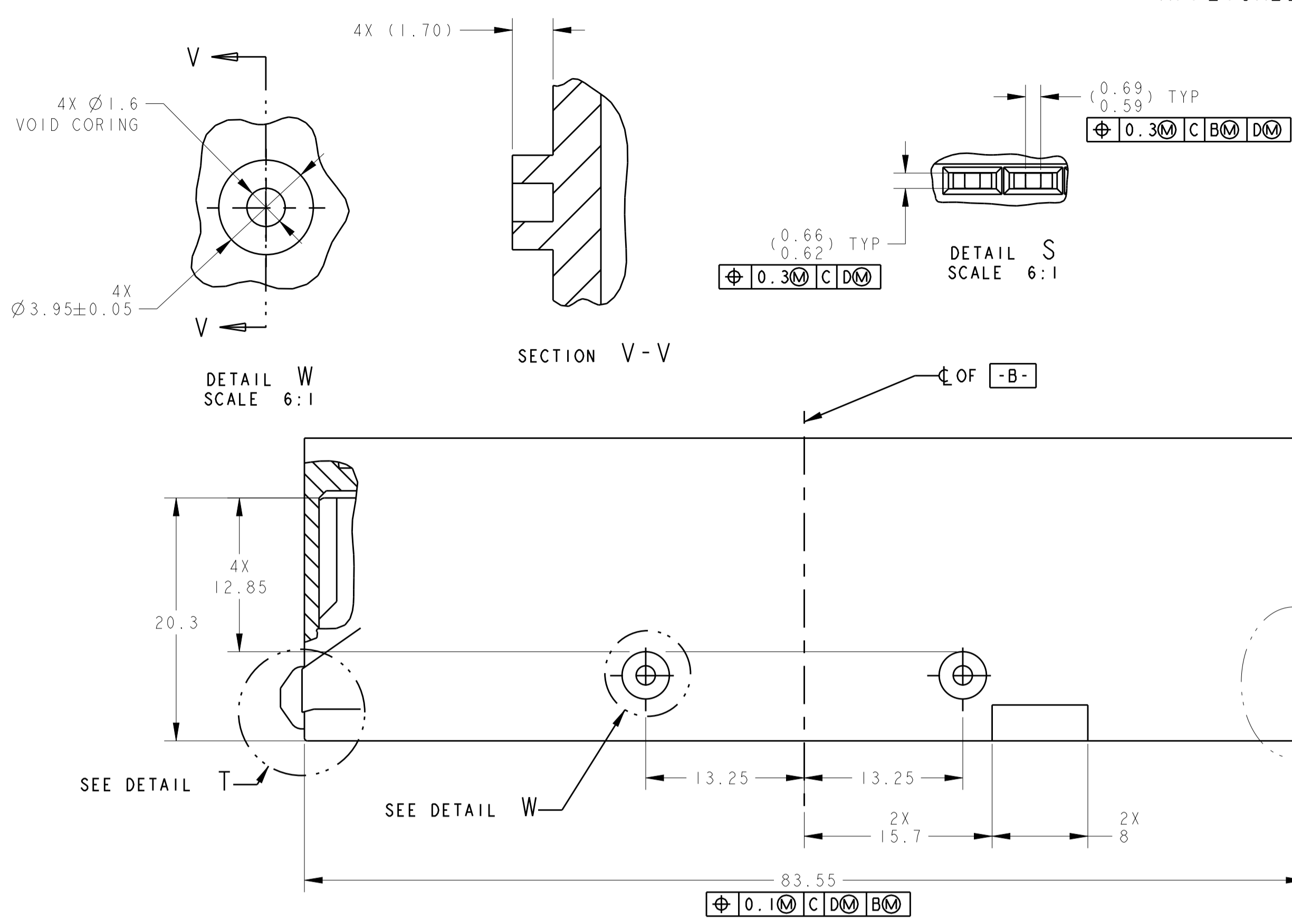
100779C=1438521

SEE SHEET 2 FOR HEADER INTERFACE SPECIFICATION AND SHEET 3 FOR KEYING AND CIRCUIT ARRANGEMENTS

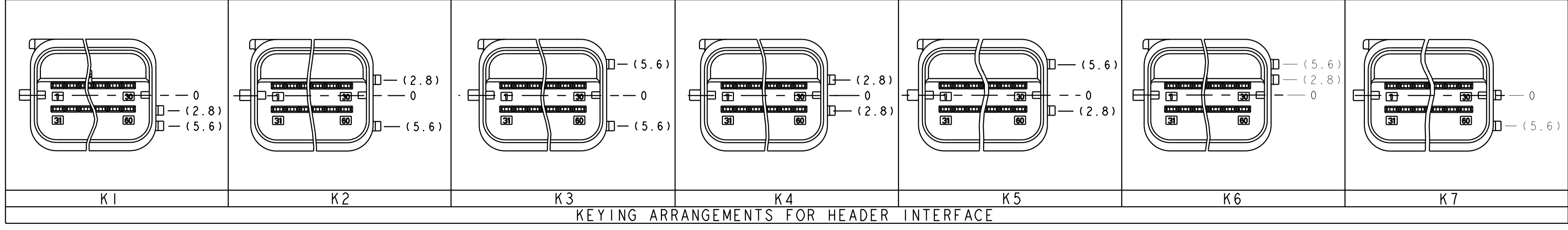
APPLICABLE HEADER INTERFACE SPECIFICATION

SHOWN WITH KEYING OPTION K1
SCALE 3:1

REVISIONS				
P.	LTN.	DESCRIPTION	DATE	APP'D.
-	-	SEE SHEET 1	-	-



- NOTE(S): UNLESS OTHERWISE SPECIFIED
- PART MUST CONFORM TO THE LATEST LEVEL OF USCAR DATED 951010.
 - ALL PLASTIC PARTS MUST HAVE MATERIAL IDENTIFICATION SYMBOLS CLEARLY MARKED, WHEREVER PACKAGE SIZE PERMITS.
 - GENERAL TOLERANCES: ±0.2 ALL ONE PLACE DIMENSIONS, ±0.1 ALL TWO PLACE DIMENSIONS, ±2° ALL ANGULAR PLACE DIMENSIONS
 - ALL RADIUS ±0.5.
 - PIN PLATING DETAILS . . .
 - (SEALED INTERFACES ONLY) SEALING SURFACE MUST BE SMOOTH AND FREE OF PARTING LINES.
 - PARTS ARE TO BE FREE OF SCRATCHES, DISCOLORATION, SALT RESIDUE OR OTHER IMPERFECTIONS THAT MAY AFFECT FUNCTION OR FIT OF PART.
 - DRAFT ANGLE PERMISSIBLE ONLY WITHIN PRINT TOLERANCE.
- 9 SEALING SURFACE, NO WITNESS LINES OR DAMAGE PERMITTED.
 - 10 VENT HOLE SIZE AND LOCATION OPTIONAL.
 - 11 THIS AREA TO REMAIN CLEAR FOR HARNESS ASSEMBLY.
 - 12 HOUSING MATERIAL SELECTION BASED ON PERFORMANCE REQUIRED FOR END APPLICATION AND SOLDERING PROCESS.
POLYESTER (PBT) - 30% GLASS TESTED TO USCAR2, REV 3, CLASS 2, MAX. AMBIENT 100 DEGREE C.
 - 13 CIRCUIT NUMBERS 1.0 HIGH CHARACTERS RAISED 0.05 - 0.1 IN A 0.10 TO 0.15 RECESSED AREA.



THIS DRAWING IS A CONTROLLED DOCUMENT.		OWN: DL DRUMMOND 11FEB2005	TE Connectivity
DIMENSIONS: mm		CHK: AJ VALASEK 11FEB2005	
TOLERANCES UNLESS OTHERWISE SPECIFIED:		APVD: AJ VALASEK 11FEB2005	NAME: ASSEMBLY, FEMALE, 60 WAY GET, TCM, CONNECTOR
0 PLC ±	1 PLC ±0.5	PRODUCT SPEC	SIZE: CAGE CODE: DRAWING NO:
2 PLC ±0.20	3 PLC ±	APPLICATION SPEC	RESTRICTED TO:
4 PLC ±	ANGLES ±	114-13060	A100779C=1438521
MATERIAL:	FINISH:	WEIGHT:	CUSTOMER DRAWING
SCALE: 1:1		SHEET: 2 OF 3	REV: E9

