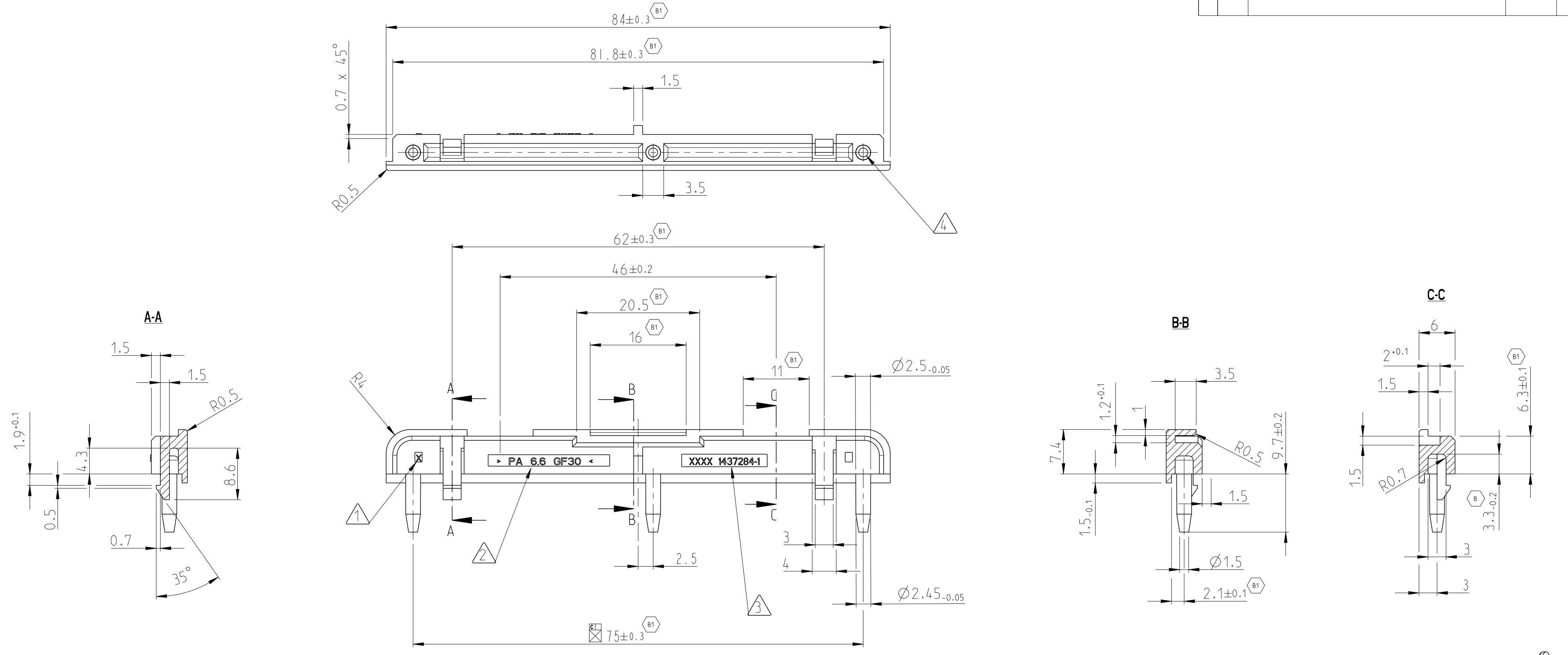
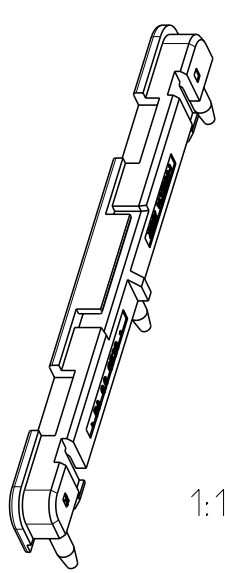


REVISIONS					
P	LTR	DESCRIPTION	DATE	DWN	APVD
B		NEW DRAWING	18JUN2014	GB	SzN
B1		DIM.TOLERANCE CORRECTION	07OCT2016	GB	SzG



- Bemerkungen
NOTES
- 1 Aenderungs index
REVISION INDEX
 - 2 Materialkennzeichnung
MATERIAL MARKING
 - 3 TE Teilenummer
TE PART NUMBER
 - 4 Maslich abstimmen mit Steckerleiste 7/15/33 pos. TE PN: 1437287-3,-4,-5,-6
DIMENSION HAS TO MATE WITH CONNECTOR 7/15/33 pos. TE PN: 1437287-3,-4,-5,-6
 - 5 Allgemeine Formschraege: 0.5°
MOLD DRAFT ANGLE: 0.5°
 - 6 Max.0.2mm Grat an Formtrennung, Anguss und Ausstosser zulaessig
MAX.BURRS 0.2MM PERMITTED ON MOULD SPLIT LINE, INJECTION AND EJECTION MARKS

1437284-1 wie dargestellt
as shown 1:1



PRODUCT CHARACTERISTICS ACC. QMP EMEA_12 BESONDERE MERKMALE NACH QMP EMEA_12		DWN 18JUN2014 Gergely Benzur	
TOLERANCES UNLESS OTHERWISE SPECIFIED ACC. TO DIN 16901-140@ENTRICK TO NOMINAL DIMENSION. EDITION 1982-11 SHALL APPLY. Frei mass toleranzen nach DIN 16901-140@. Es gilt die Ausgabe 1982-11.		CHK 18JUN2014 Szilard Nemes	
THIS DRAWING IS A CONTROLLED DOCUMENT.			
DIMENSIONS:	TOLERANCES UNLESS OTHERWISE SPECIFIED:	APVD 18JUN2014 Szilard Nemes	NAME Blende 7/15/33 SVDO Screen 7/15/33 SVDO
mm	0 PLC ± 1 PLC ± 2 PLC ± 3 PLC ± 4 PLC ±	PRODUCT SPEC -	SIZE A2
	ANGLES ±1°	APPLICATION SPEC -	CAGE CODE 00779
MATERIAL PA 6.6 GF30	FINISH -	WEIGHT -	DRAWING NO C=1437284-1
CUSTOMER DRAWING		RESTRICTED TO -	SHEET 1 OF 1
		SCALE 2:1	REV B1

