

4

3

2

1

THIS DRAWING IS UNPUBLISHED.

RELEASED FOR PUBLICATION

© COPYRIGHT

ALL RIGHTS RESERVED.

LOC

DIST


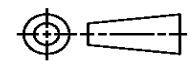
REVISIONS

P	LTR	DESCRIPTION	DATE	DWN	APVD

REPLACED BY OCEAN STYLE APPLICATOR PART NUMBER

FOR REPLACEMENT PARTS FOR APPLICATOR REFER TO ADDITIONAL PAGE(S). SPARE PARTS KIT (IF LISTED) WILL REMAIN AVAILABLE.

THE REPLACEMENT OCEAN STYLE APPLICATOR HAS THE SAME TERMINATOR/PRESS INTERFACE AS APPLICATOR

THIS DRAWING IS A CONTROLLED DOCUMENT.		DWN	 TE Connectivity		
DIMENSIONS:		CHK			
TOLERANCES UNLESS OTHERWISE SPECIFIED:		APVD	NAME		
		PRODUCT SPEC	RESTRICTED TO		
		APPLICATION SPEC	SIZE	CAGE CODE	DRAWING NO
MATERIAL	FINISH	WEIGHT	A3	C-	
		SCALE	SHEET	OF	REV

PART NUMBER	REV	FIRST USED	TERMINATOR	FEED TYPE	DESCRIPTION
1426087-1	N	-	LEADMAKER	MECH POST FEED	CUTS CARRIER
1426087-2	N	-	BENCH	MECH PRE FEED	CUTS CARRIER
1426087-6	N	-	LEADMAKER	MECH POST FEED	CONTINUOUS CARRIER
7-1426087-1	N	-	LEADMAKER	MECH POST FEED	-1 AND SPARE PARTS
7-1426087-2	N	-	BENCH	MECH PRE FEED	-2 AND SPARE PARTS
7-1426087-6	N	-	LEADMAKER	MECH POST FEED	-6 AND SPARE PARTS
7-1426087-7	G	-	-	-	SPARE PARTS KIT

CRIMP DATA (AMP TERMINAL)

TERMINAL NAME: UNIVERSAL M-N-L PIN & SOCKET

CRIMP	SIZE	TYPE	RANGE
WIRE	2.29 [.090 IN]	F	20-14 AWG or 0.5-2.0mm ²
INSUL	3.30 [.130 IN]	F	2.00-3.30 [0.079-0.130 IN]
WIRE STRIP LENGTH	APPL INSTRUCTION		
4.00-4.75 [.157-.189 IN]	408-8322		

TERMINAL	-	FEED
APPL SPEC	114-18011	10.92 [.430 IN]

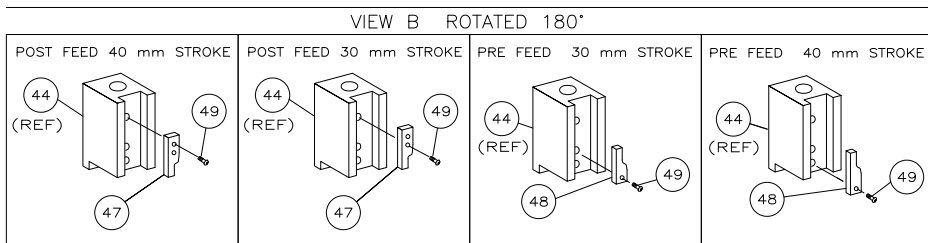
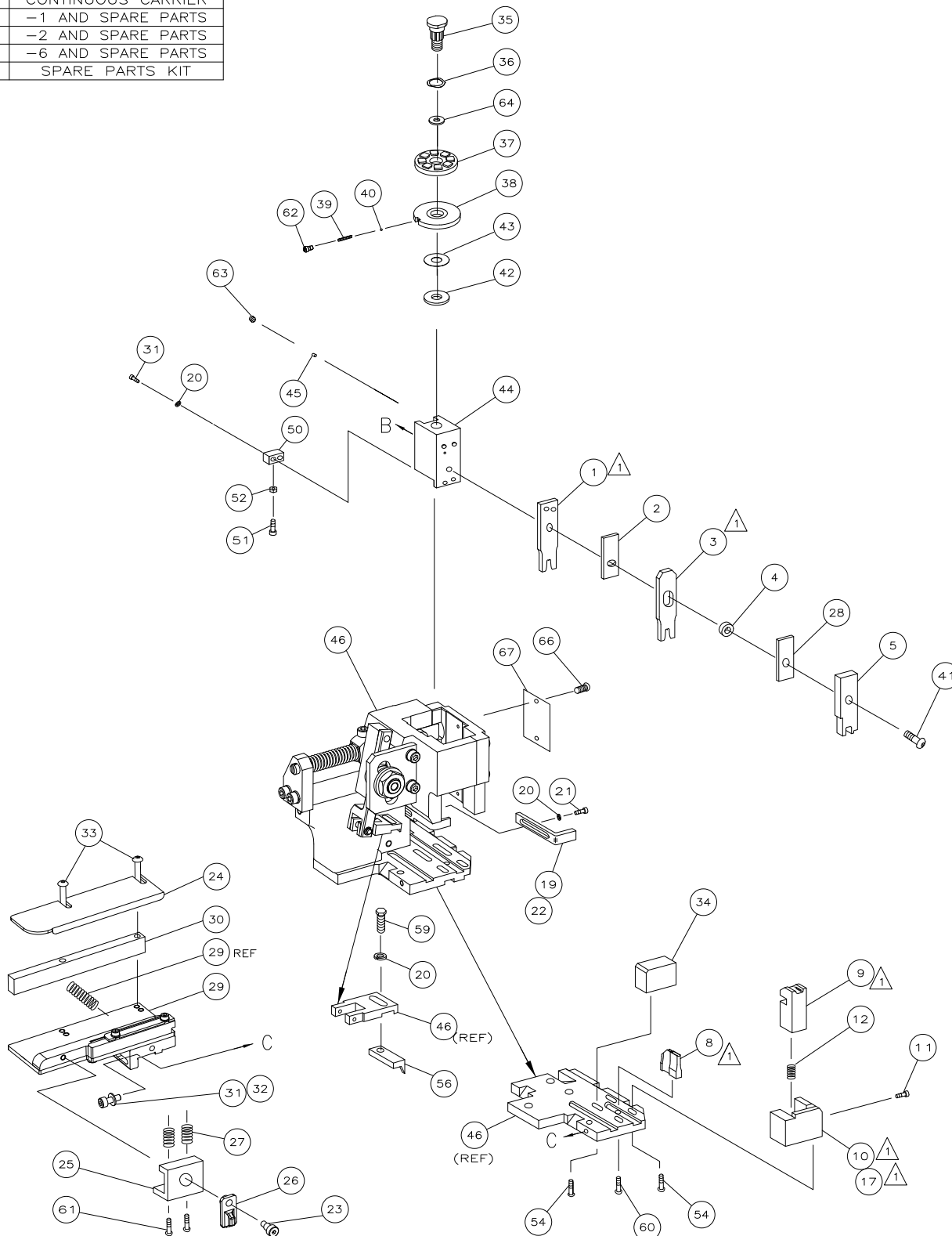
TERMINALS APPLIED

926882	926883	926887	927965
SOCKET	PIN	PIN	SOCKET
-	-	-	-
-	-	-	-
-	-	-	-
-	-	-	-

WIRE SIZE mm ² AWG	CRIMP HEIGHT	PIN PN & LENGTH [IN]
14 AWG	1.73 ±0.05 [.068 ±0.002 IN]	9-354778-3 [.2960]
2.00mm ²	1.70 ±0.05 [.067 ±0.002 IN]	9-354778-6 [.2975]
1.50mm ²	1.53 ±0.05 [.060 ±0.002 IN]	1-354779-1 [.3045]
16 AWG	1.47 ±0.05 [.058 ±0.002 IN]	1-354779-5 [.3065]
1.25mm ²	1.45 ±0.05 [.057 ±0.002 IN]	1-354779-8 [.3080]
1.00mm ²	1.37 ±0.05 [.054 ±0.002 IN]	2-354779-4 [.3110]
18 AWG	1.30 ±0.05 [.051 ±0.002 IN]	3-354779-0 [.3140]
0.75mm ²	1.29 ±0.05 [.051 ±0.002 IN]	3-354779-0 [.3140]
20 AWG	1.22 ±0.05 [.048 ±0.002 IN]	3-354779-7 [.3175]
0.50mm ²	1.21 ±0.05 [.048 ±0.002 IN]	3-354779-7 [.3175]
-	-	-
-	-	-
-	-	-
-	-	-

SET UP GAGE	LAYOUT
458637-3	L1426087

1. RECOMMENDED SPARE PARTS.
 2. GREASE RAM, CAM, CAM FOLLOWER AND FEED ROD LIGHTLY.
 3. LUBRICATE DAILY PER THE APPLICATOR INSTRUCTION SHEET SUPPLIED WITH THE APPLICATOR.



QTY	REQD	PER	ASSY	PART NO	DESCRIPTION	ITEM NO
-	1	1	1	1	1	73
-	1	1	1	1	1	72
-	1	1	1	1	1	71
-						70
-						69
-						68
-	1	1	1	1	1	67
-	2	2	2	2	2	66
-						65
-	1	1	1	1	1	64
-	1	1	1	1	1	63
-	1	1	1	1	1	62
-	2	2	2	2	2	61
-	1	1	1	1	1	60
-	1	1	1	1	1	59
-						58
-						57
-	1	1	1	1	1	56
-	4	4	4	4	4	55
-						54
-	1	1	1	1	1	53
-	1	1	1	1	1	52
-	1	1	1	1	1	51
-	1	1	1	1	1	50
-	1	1	1	1	1	49
-	-	1	-	-	-	48
-	1	-	1	-	-	47
-	1	1	1	1	1	46
-	1	1	1	1	1	45
-	1	1	1	1	1	44
-	1	1	1	1	1	43
-	1	1	1	1	1	42
-	1	1	1	1	1	41
-	1	1	1	1	1	40
-	1	1	1	1	1	39
-	1	1	1	1	1	38
-	1	1	1	1	1	37
-	1	1	1	1	1	36
-	1	1	1	1	1	35
-	1	1	1	1	1	34
-	2	2	2	2	2	33
-	1	1	1	1	1	32
-	3	3	3	3	3	31
-	1	1	1	1	1	30
-	1	1	1	1	1	29
-	1	1	1	1	1	28
-	2	2	2	2	2	27
-	1	1	1	1	1	26
-	1	1	1	1	1	25
-	1	1	1	1	1	24
-	1	1	1	1	1	23
-	1	-	1	-	-	22
-	1	1	1	1	1	21
-	4	4	4	4	4	20
-	-	1	-	-	-	19
-	1	-	-	1	-	18
-						17
-						16
-						15
-						14
-						13
-	1	1	1	1	1	12
-	1	1	1	1	1	11
-	-	1	-	1	-	10
-	1	1	1	1	1	9
1	2	2	2	1	1	8
-						7
-						6
-	1	1	1	1	1	5
-	1	1	1	1	1	4
1	2	2	2	1	1	3
-	1	1	1	1	1	2
1	2	2	2	1	1	1

THIS DRAWING IS A CONTROLLED DOCUMENT.

APV: F BACKHURST
 PRODUCT SPEC: -
 APPLICATION SPEC: -

TE Connectivity
 Harrisburg, PA 17105-3608

NAME: SIDE FEED HD-1 APPLICATOR

SIZE: A1
 CAGE CODE: 00779
 DRAWING NO: C=1426087

CUSTOMER DRAWING