

4

3

2

1

THIS DRAWING IS UNPUBLISHED.

RELEASED FOR PUBLICATION

© COPYRIGHT

ALL RIGHTS RESERVED.

LOC DIST


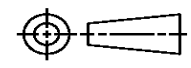
REVISIONS

P	LTR	DESCRIPTION	DATE	DWN	APVD

REPLACED BY OCEAN STYLE APPLICATOR PART NUMBER

FOR REPLACEMENT PARTS FOR APPLICATOR REFER TO ADDITIONAL PAGE(S). SPARE PARTS KIT (IF LISTED) WILL REMAIN AVAILABLE.

THE REPLACEMENT OCEAN STYLE APPLICATOR HAS THE SAME TERMINATOR/PRESS INTERFACE AS APPLICATOR

THIS DRAWING IS A CONTROLLED DOCUMENT.		DWN	 TE Connectivity		
DIMENSIONS:		CHK			
TOLERANCES UNLESS OTHERWISE SPECIFIED:		APVD	NAME		
 <ul style="list-style-type: none"> 0 PLC ± 1 PLC ± 2 PLC ± 3 PLC ± 4 PLC ± ANGLES ± 		PRODUCT SPEC	RESTRICTED TO		
		APPLICATION SPEC	SIZE	CAGE CODE	DRAWING NO
MATERIAL	FINISH	WEIGHT	A3	C-	
		SCALE	SHEET	OF	REV

THIS DRAWING IS UNPUBLISHED. RELEASED FOR PUBLICATION
 © COPYRIGHT BY TYCO ELECTRONICS CORPORATION. ALL INTERNATIONAL RIGHTS RESERVED.

LOC	DIST	REVISIONS			
		REV	DATE	BY	APPD
A	66	D	7-2008	MY	TE

PART NUMBER	REV	FIRST USED	TERMINATOR	FEED TYPE	DESCRIPTION
1426037-1	D	-	LEADMAKER	MECH POST FEED	CUTS CARRIER
1426037-2	D	-	BENCH	MECH PRE FEED	CUTS CARRIER
1426037-6	D	-	LEADMAKER	MECH POST FEED	CONTINUOUS CARRIER
7-1426037-1	D	-	LEADMAKER	MECH POST FEED	-1 AND SPARE PARTS
7-1426037-2	D	-	BENCH	MECH PRE FEED	-2 AND SPARE PARTS
7-1426037-6	D	-	LEADMAKER	MECH POST FEED	-6 AND SPARE PARTS
7-1426037-7	A	-	-	-	SPARE PARTS KIT

CRIMP DATA (AMP TERMINAL)			
TERMINAL NAME: UNIVERSAL MATE-N-LOCK PIN AND SOCKET			
CRIMP	SIZE	TYPE	RANGE
WIRE	2.54 [.100 IN]	F	16-14 AWG or 1.5mm ² -2.5mm ²
INSUL	5.08 [.200 IN]	F	3.30-5.10 [.130-.201 IN]
WIRE STRIP LENGTH	APPL INSTRUCTION		
4.00-4.75 [.157-.187 IN]	408-8322		

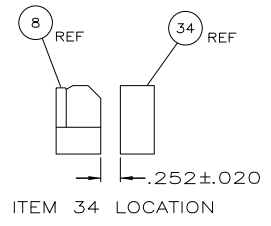
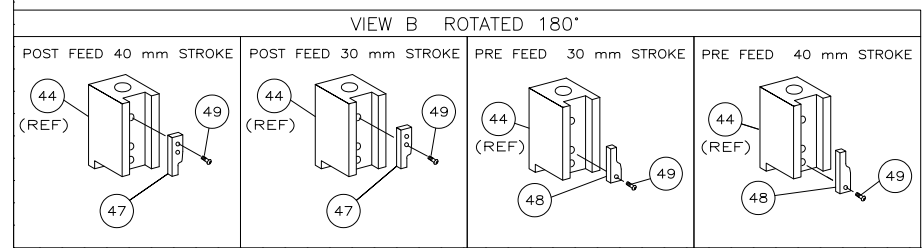
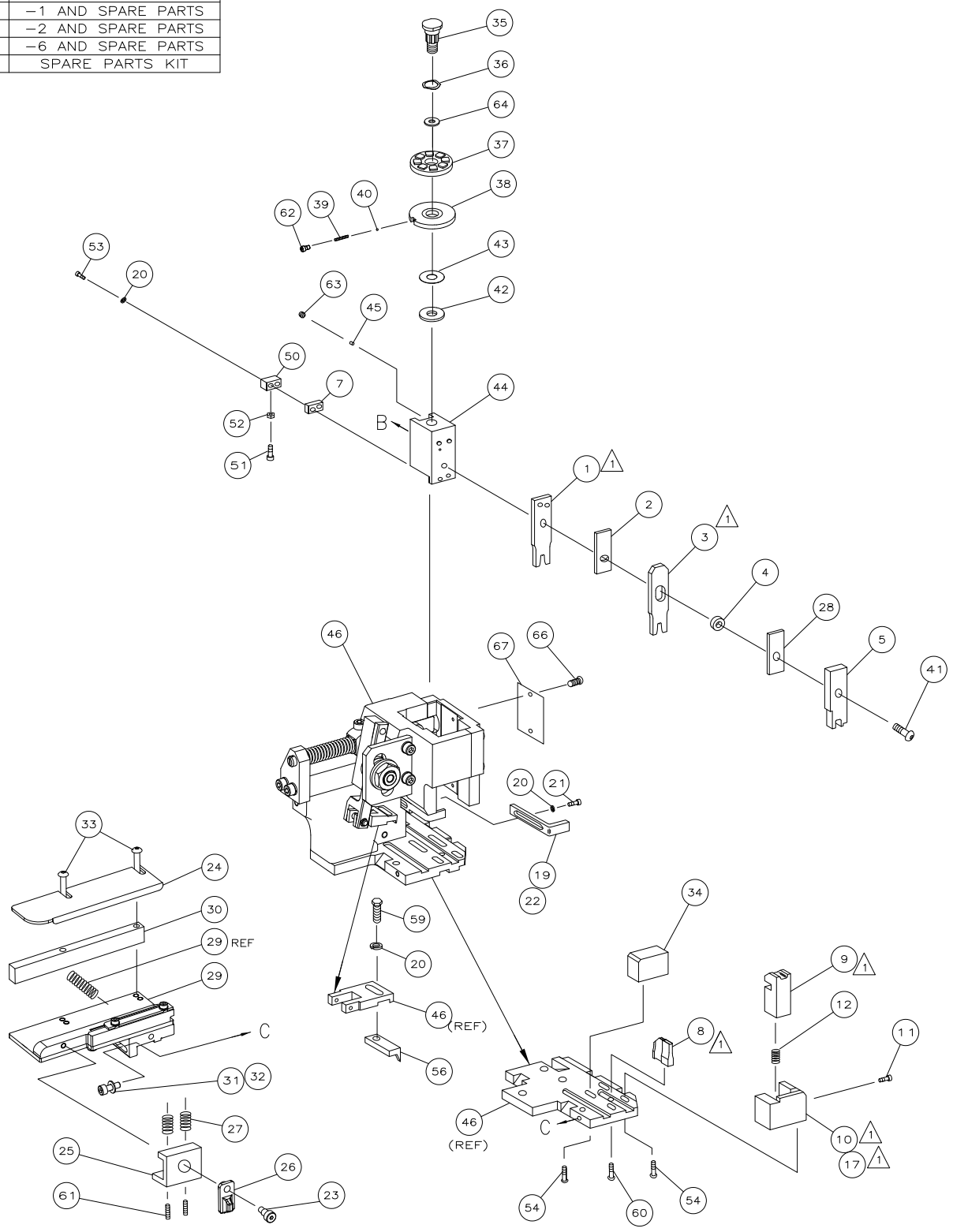
TERMINAL APPL SPEC	FEED
114-18011	15.75 [.620 IN]

TERMINALS APPLIED			
926868	-	-	-
926869	-	-	-
926899	-	-	-
-	-	-	-
-	-	-	-
-	-	-	-
-	-	-	-

WIRE SIZE mm ² AWG	CRIMP HEIGHT	PIN PN & LENGTH [IN]
2.50mm ²	1.85 ±0.05 [.073 ±.002 IN]	7-354778-9 [.2890]
14 AWG	1.72 ±0.05 [.068 ±.002 IN]	8-354778-9 [.2940]
2.00mm ²	1.70 ±0.05 [.067 ±.002 IN]	9-354778-1 [.2950]
1.50mm ²	1.55 ±0.05 [.061 ±.002 IN]	354779-5 [.3015]
16 AWG	1.49 ±0.05 [.059 ±.002 IN]	354779-9 [.3035]

SET UP GAGE	LAYOUT
458637-3	L1426037

- RECOMMENDED SPARE PARTS.
- GREASE RAM, CAM, CAM FOLLOWER AND FEED ROD LIGHTLY.
- LUBRICATE DAILY PER THE APPLICATOR INSTRUCTION SHEET SUPPLIED WITH THE APPLICATOR.



QTY	REQD	PER	ASSY	PART NO	DESCRIPTION	ITEM NO
-	1	1	1	1	1	73
-	1	1	1	1	1	72
-	1	1	1	1	1	71
-	1	1	1	1	1	70
-	1	1	1	1	1	69
-	1	1	1	1	1	68
-	1	1	1	1	1	67
-	2	2	2	2	2	66
-	1	1	1	1	1	65
-	1	1	1	1	1	64
-	1	1	1	1	1	63
-	1	1	1	1	1	62
-	2	2	2	2	2	61
-	1	1	1	1	1	60
-	1	1	1	1	1	59
-	1	1	1	1	1	58
-	1	1	1	1	1	57
-	1	1	1	1	1	56
-	1	1	1	1	1	55
-	4	4	4	4	4	54
-	2	2	2	2	2	53
-	1	1	1	1	1	52
-	1	1	1	1	1	51
-	1	1	1	1	1	50
-	1	1	1	1	1	49
-	1	1	1	1	1	48
-	1	1	1	1	1	47
-	1	1	1	1	1	46
-	1	1	1	1	1	45
-	1	1	1	1	1	44
-	1	1	1	1	1	43
-	1	1	1	1	1	42
-	1	1	1	1	1	41
-	1	1	1	1	1	40
-	1	1	1	1	1	39
-	1	1	1	1	1	38
-	1	1	1	1	1	37
-	1	1	1	1	1	36
-	1	1	1	1	1	35
-	1	1	1	1	1	34
-	2	2	2	2	2	33
-	1	1	1	1	1	32
-	1	1	1	1	1	31
-	1	1	1	1	1	30
-	1	1	1	1	1	29
-	1	1	1	1	1	28
-	2	2	2	2	2	27
-	1	1	1	1	1	26
-	1	1	1	1	1	25
-	1	1	1	1	1	24
-	1	1	1	1	1	23
-	1	1	1	1	1	22
-	1	1	1	1	1	21
-	4	4	4	4	4	20
-	1	1	1	1	1	19
-	1	1	1	1	1	18
-	1	1	1	1	1	17
-	1	1	1	1	1	16
-	1	1	1	1	1	15
-	1	1	1	1	1	14
-	1	1	1	1	1	13
-	1	1	1	1	1	12
-	1	1	1	1	1	11
-	1	1	1	1	1	10
-	1	1	1	1	1	9
1	2	2	2	1	1	8
-	1	1	1	1	1	7
-	1	1	1	1	1	6
-	1	1	1	1	1	5
-	1	1	1	1	1	4
1	2	2	2	1	1	3
-	1	1	1	1	1	2
1	2	2	2	1	1	1

DIMENSIONS:		TOLERANCES UNLESS OTHERWISE SPECIFIED:		APPROVALS:	
INCHES	0 PLC ± .005	1 PLC ± .005	2 PLC ± .005	3 PLC ± .005	4 PLC ± .005
MATERIAL	FINISH	APPLICATOR SPEC	WEIGHT	SCALE	RESTRICTED TO