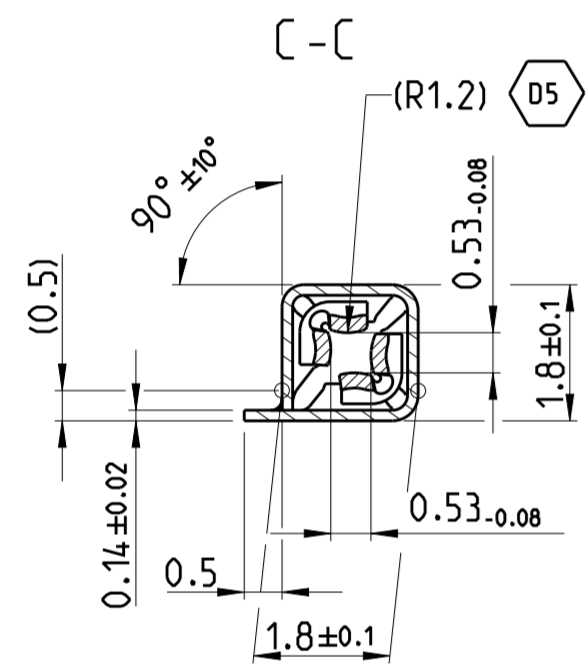
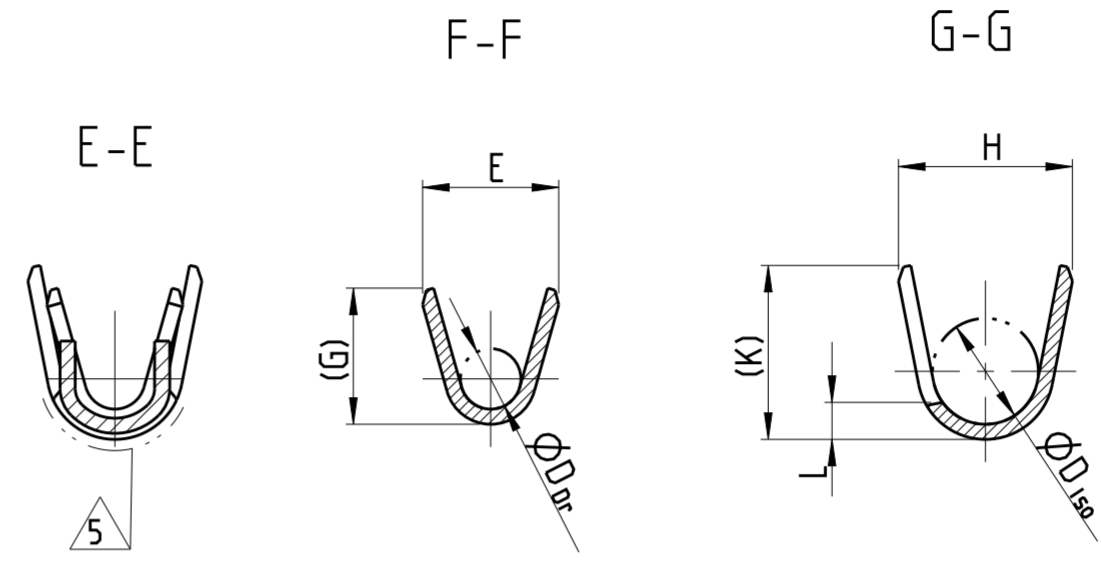
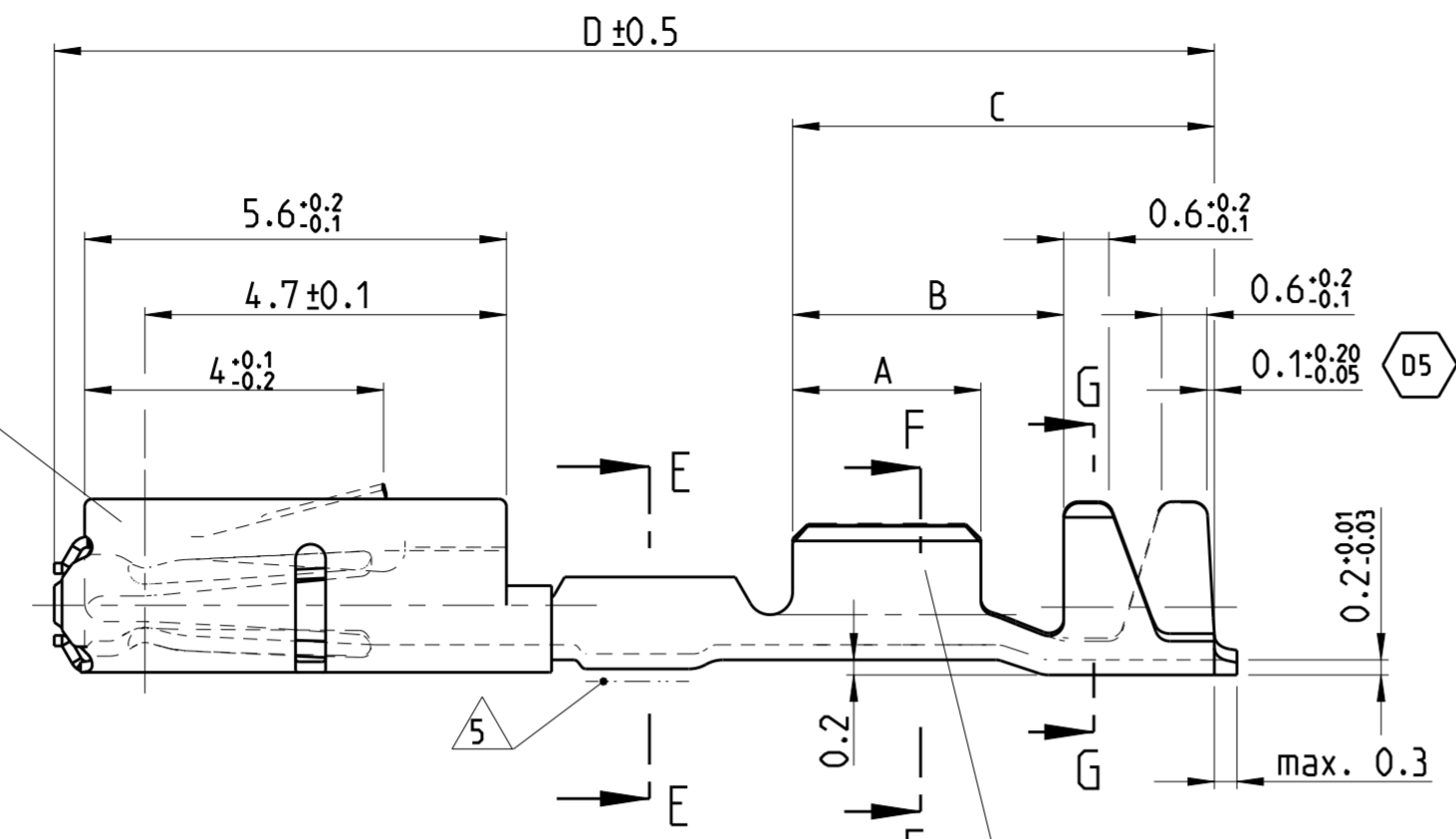


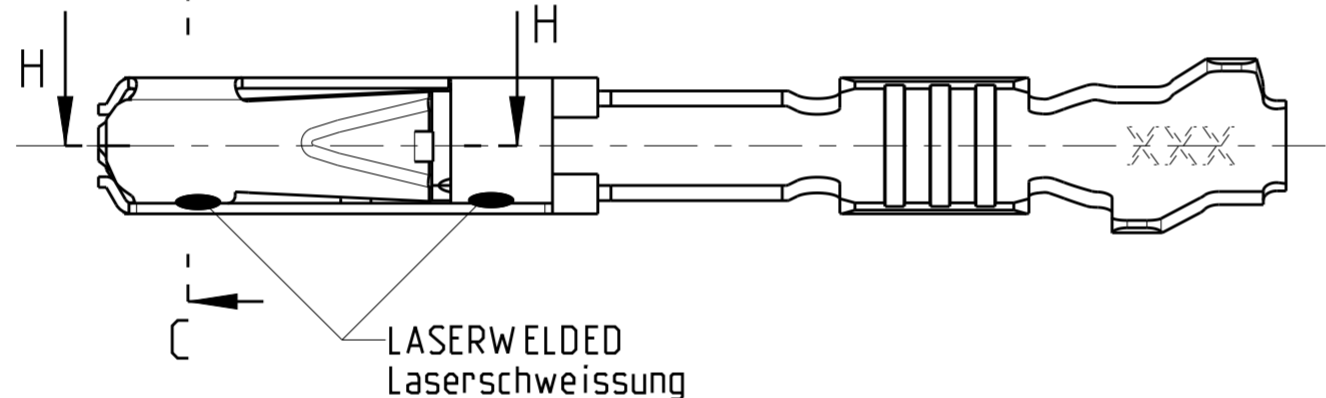
THIS DRAWING IS UNPUBLISHED. RELEASED FOR PUBLICATION 2009
 (C) COPYRIGHT 2009 ALL RIGHTS RESERVED.

LOC	DIST	REVISIONS					
		P	LTR	DESCRIPTION	DATE	DWN	APVD
A1	-	D2		NEW ProE DRAWING (ECR-11-009831)	24OCT2011	Abr	Brun
		D3		LP Variants removed. ECR-13-015135	27SEP2013	Abr	Brun
		D4		SEE PCN E-19-011079	09DEC2019	MAH.	BERG
		D5		SEE PCN E-20-001102	03SEP2020	MAH.	BERG

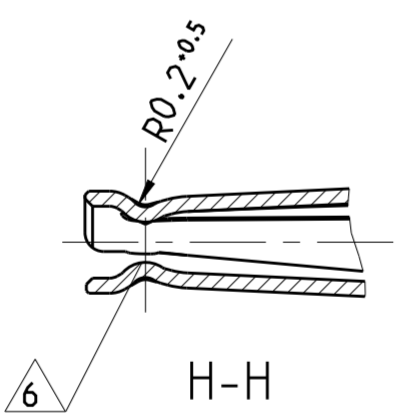
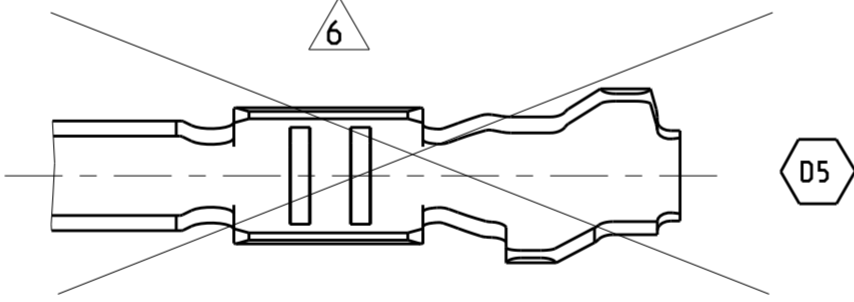
SPRING/Ueberfeder
 MATERIAL: X10CrNi 18 8
 EN 10088-2
 SURFACE/Oberflaeche: PLAIN/blank



DESIGN/Ausfuehrung 2
 BODY/Kontaktkoerper
 MATERIAL: CuNiSi
 SURFACE: TINNED
 Oberflaeche: verzinkt



DESIGN/Ausfuehrung 1



WITHOUT SPRING
 ohne Ueberfeder

NOTES

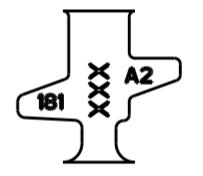
Bemerkungen

- DATE CODE (WEEK/YEAR E.G. WEEK NUMBER 18/ YEAR 2011 AND TE REVISION (E.G. REV.A)
 Datumscode (Woche/Jahr z.B. KW 18/ Jahr 2011) und TE Revision (z.B.Rev. A)
- SUITABLE FOR PIN CONTACT SEE DRAWING: TE: 929453
 Passend zu Stiftkontakt siehe Zeichnung: TE: 929453
- FOR FLR-CONDUCTOR ACCORDING TO DIN 72551-6 ONLY
 Nur fuer FLR-Leitung nach DIN 72551, Teil 6
- DETAILS OF DESIGN ARE LEFT TO MANUFACTURER
 Einzelheiten der Ausfuehrung bleiben dem Hersteller ueberlassen

5 SELECTIVELY GOLD PLATED
 Selektiv vergoldet

6 NOT FOR NEW APPLICATION
 nicht fuer Neuanwendung

D5 7 VARIANTS OF DESIGN1 ARE SUPERSEDED BY CORRESPONDING VERSIONS OF DESIGN2
 Varianten von Design1 werden durch die entsprechenden Versionen von Design2 ersetzt



ORDER NO. DESIGN BESTELL-NR. Ausfuehrung	REV.	ORDER NO. DESIGN BESTELL-NR. Ausfuehrung	REV.	DGB WIRE-SIZE-RANGE mm²	SURFACE CONTACT AREA OBERFLAECHE Kontaktzone	LENGTH Laenge	WIRE CRIMP Drahtcrimp	INSU. CRIMP Iso' crimp	WEIGHT Gewicht g
5-1452013-1	A	1452013-1	C	0.5-0.75	Au	A= 2.8 B= 3.8 C= 5.6 D= 15.6	E= 2 G= 2.1 D _{Dr} = 1	H= 2.7 K= 2.9 L= 0.7 D _{ISO} = 1.6	0.13
5-968893-1	A	968893-1	D	0.25-0.35	Au	A= 2.5 B= 3.6 C= 5.6 D= 15.6	E= 1.8 G= 1.8 D _{Dr} = 0.8	H= 2.3 K= 2.3 L= 0.6 D _{ISO} = 1.4	0.13

DIMENSIONS/ Abmessungen mm

THIS DRAWING IS A CONTROLLED DOCUMENT.		DWN S. Garcia 15AUG2000	TE Connectivity	
		CHK R. Jetter 15AUG2000		
DIMENSIONS: mm	TOLERANCES UNLESS OTHERWISE SPECIFIED:	APVD -	NAME MQS	RESTRICTED TO
	0-PLC ±	PRODUCT SPEC 108-18030	SOCKET CONTACT WITH SHORT CIRCUIT AREA	
	1-PLC ± ±0.2	APPLICATION SPEC 114-18021	Buchsenkontakt mit Kurzschlussfederbereich	
	2-PLC ±	WEIGHT -	SIZE A2	
	3-PLC ±	CUSTOMER DRAWING	CAGE CODE 00779	DRAWING NO. C-1355983
	4-PLC ±		SCALE 10:1	SHEET 1 OF 1
MATERIAL -	ANGLES ±°			REV D5
	FINISH			