

4

3

2

1

THIS DRAWING IS UNPUBLISHED.

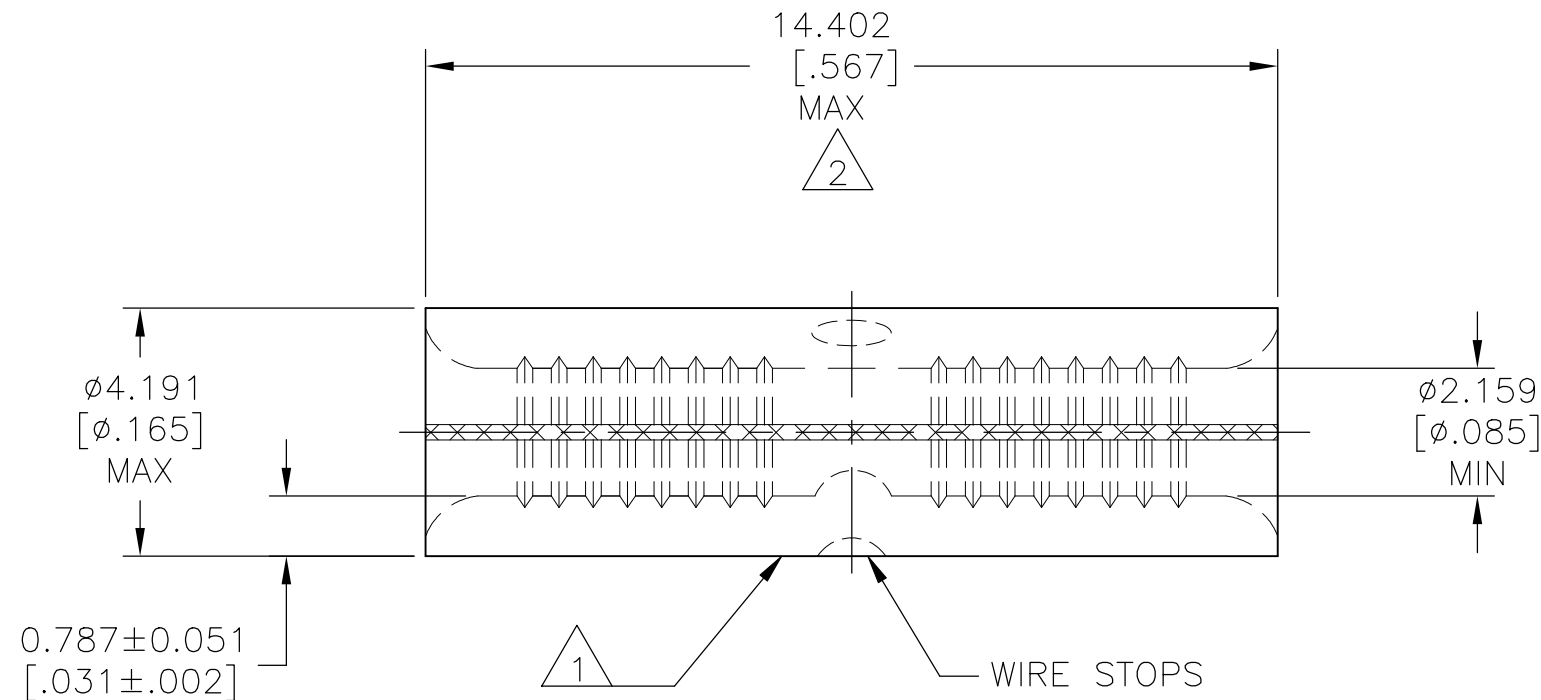
RELEASED FOR PUBLICATION

REVISIONS

© COPYRIGHT - TE Connectivity Ltd.

ALL RIGHTS RESERVED.

P	LTR	DESCRIPTION	DATE	DWN	APVD
	A	REDRAWN PER ECO-18-009925	25JUN2018	RS	DR



- 1 STAMP AMP 16-14\* APPROX AS SHOWN
- 2 MAXIMUM LENGTH DOES NOT INCLUDE MANUFACTURING TABS
- 3 MATERIAL:  
COPPER PER ASTM B152
- 4 FINISH:  
GOLD 0.001270[.000050] MIN THK PER ASTM B488 TYPE 1, CODE C  
OVER NICKEL PLATE 0.000762[.000030] MIN THK PER SAE AMS QQ-N-290

500	LOOSE PIECE	134540-1
QTY	PACKAGE TYPE	PART NUMBER

AMP INCORPORATED  
CUSTOMER SERVICE SYSTEMS

THIS DRAWING IS A CONTROLLED DOCUMENT.

DWN RAVI S 25JUN2018

CHK ROHDE DANIEL F 25JUN2018

APVD ROHDE DANIEL F 25JUN2018

**TE** TE Connectivity Ltd.

FOR ADDITIONAL  
PRODUCT INFORMATION OR  
COPIES OF DRAWINGS  
AND TECHNICAL DOCUMENTS

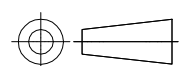
PRODUCT INFORMATION CENTER  
1-800-522-6752

MAX RECOMMENDED OPERATING  
TEMPERATURE:  
260°C [500°F]

DIMENSIONS:  
mm [INCHES]

TOLERANCES UNLESS  
OTHERWISE SPECIFIED:

0 PLC	± -
1 PLC	± -
2 PLC	± -
3 PLC	± 0.127[.005]
4 PLC	± -
ANGLES	± 5°



PRODUCT SPEC

---

APPLICATION SPEC

---

WEIGHT

---

NAME  
BUTT SPLICE SOLISTRAND  
16-14 AWG

FOR APPLICATION  
TOOLING INFORMATION

TOOLING ASSISTANCE CENTER  
1-800-722-1111

VOLTAGE RATING:  
N/A

MATERIAL



FINISH



SIZE	CAGE CODE	DRAWING NO	RESTRICTED TO
A3	00779	C-134540	---

FOR ORDER ENTRY  
1-800-526-5142

WIRE CROSS SECTIONAL AREA RANGE,  
1.04-2.62mm²[2,050-5,180] CIR MILS

CUSTOMER DRAWING

SCALE 8:1 SHEET 1 OF 1 REV A