

4

3

2

1


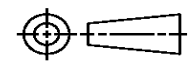
THIS DRAWING IS UNPUBLISHED. RELEASED FOR PUBLICATION
© COPYRIGHT ALL RIGHTS RESERVED.

LOC		DIST		REVISIONS			
P	LTR	DESCRIPTION		DATE	DWN	APVD	
	E2	ECR-14-002794		25FEB2014	GK	HMR	

REPLACED BY OCEAN STYLE APPLICATOR PART NUMBER 2150203-1

FOR REPLACEMENT PARTS FOR APPLICATOR 1339540
REFER TO ADDITIONAL PAGE(S). SPARE PARTS KIT (IF LISTED)
WILL REMAIN AVAILABLE.

THE REPLACEMENT OCEAN STYLE APPLICATOR HAS THE
SAME TERMINATOR/PRESS INTERFACE AS APPLICATOR
1339540

THIS DRAWING IS A CONTROLLED DOCUMENT.		DWN	GOPALAKRISHNA HV			TE Connectivity			
DIMENSIONS:		CHK	RAGHAVENDRA			NAME			
		TOLERANCES UNLESS OTHERWISE SPECIFIED:		APVD	RAGHAVENDRA				
		0 PLC ±	1 PLC ±	PRODUCT SPEC		END FEED HD-I APPLICATOR			
MATERIAL		2 PLC ±	3 PLC ±	APPLICATION SPEC		SIZE	CAGE CODE	DRAWING NO	RESTRICTED TO
FINISH		4 PLC ±	ANGLES ±	WEIGHT		A3		©- 1339540	
				CUSTOMER DRAWING		SCALE	SHEET 1 OF 2	REV E2	

DRAWING MADE IN THIRD ANGLE PROJECTION

PART NUMBER	REV	FIRST USED	TERMINATOR	FEED TYPE	DESCRIPTION
1339540-1	E		- BENCH & LEADMAKER	MECH POST FEED	HD-I APPLICATOR
7-1339540-1	E		- BENCH & LEADMAKER	MECH POST FEED	-1 AND SPARE PARTS
7-1339540-7	A		-	-	SPARE PARTS KIT

CRIMP DATA AMP TERMINAL AMP CRIMP SPECS

TERMINAL NAME: .110 SERIES FASTON RECEPTACLE

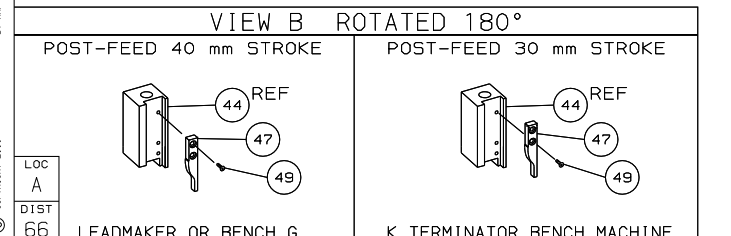
CRIMP	SIZE	TYPE	RANGE
WIRE	1.78 [.070 IN]	F	0.50mm ² - 1.00mm ²
INSUL	3.05 [.120 IN]	F	1.6-3.0 [.063-.120 IN]
WIRE STRIP LENGTH	3.17-3.97 [.125-.156 IN]		APPL INSTRUCTION 408-8323
TERMINAL APPL SPEC	114-20109		FEED 16.89 [.665 IN]

TERMINALS APPLIED

TERMINAL NUMBER	DESCRIPTION	TERMINAL NUMBER	DESCRIPTION
160484	-	-	-
160415	-	-	-
160424	-	-	-
160528	-	-	-
160533	-	-	-
160534	-	-	-
160555	-	-	-

WIRE SIZE mm ² AWG	CRIMP HEIGHT	PIN PN & LENGTH [IN]
1.00mm ²	1.04 ±0.05 [.041 ±.002 IN]	4-354779-0 [.3190]
0.75mm ² OR 18AWG	0.99 ±0.05 [.039 ±.002 IN]	4-354779-6 [.3220]
0.70mm ²	0.99 ±0.05 [.039 ±.002 IN]	4-354779-6 [.3220]
0.50mm ² OR 20AWG	0.94 ±0.05 [.037 ±.002 IN]	5-354779-0 [.3240]

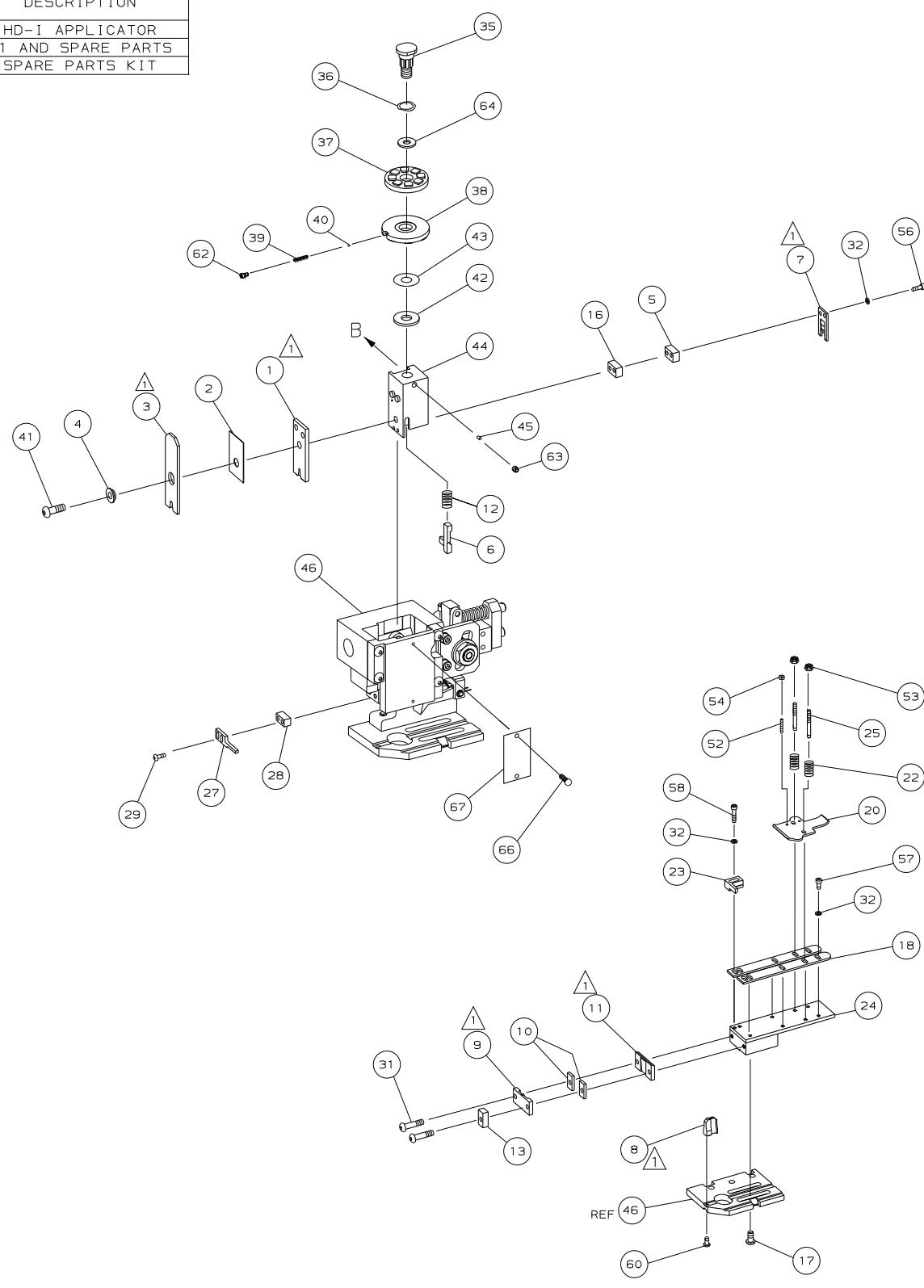
- △ RECOMMENDED SPARE PARTS.
- 2. GREASE RAM, CAM, CAM FOLLOWER AND FEED ROD LIGHTLY.
- 3. LUBRICATE DAILY PER THE APPLICATOR INSTRUCTION SHEET SUPPLIED WITH THE APPLICATOR.
- △ THE INSULATION CRIMP REQUIRED BY THE CUSTOMER AND APPLICABLE INSULATION RANGE MAY NOT CONFORM TO THE PARAMETERS LISTED IN THE APPLICATION SPEC.



LOC A
D1ST 66
LEADMAKER OR BENCH G
K TERMINATOR BENCH MACHINE

1339540 ↔ 1339540

/home/us016926/DHTECmod



QTY	REQD PER ASSY	PART NO	DESCRIPTION	ITEM NO	
-	1	1	1339540	PRINT, APPLICATOR LOG SHEET	73
-	1	1	1338705-2	DOCUMENTATION PACKAGE	72
-	-	-	-	-	70
-	-	-	-	-	69
-	-	-	-	-	68
-	1	1	461264-1	PLATE, IDENTIFICATION	67
-	2	2	21017-2	SCR,DRIVE (#2X.19) ID PLATE	66
-	-	-	-	-	65
-	1	1	986950-1	WASHER, FLAT PRECISION	64
-	1	1	3-18031-0	SCR,SKT SET (M6X6)RAM	63
-	1	1	18023-9	SCR,SKT CAP (M4X6)CP DSC	62
-	-	-	-	-	61
-	1	1	18024-7	SCR,BHC (M4X10) ANVIL	60
-	-	-	-	-	59
-	2	2	1-18023-3	SCR,SHC (M4X16)HOLD DOWN	58
-	5	5	1-18023-0	SCR,SHC (M4X8)STRIP GUIDE	57
-	2	2	1-18023-1	SCR,SHC (M4X10)SLUG BLADE	56
-	-	-	-	-	55
-	2	2	18029-1	NUT,HEX (M3)DRAG	54
-	2	2	986965-1	NUT,HEX SL (M4)DRAG STUD	53
-	2	2	2-18032-2	SCR,SKT SET (M3X10)DRAG	52
-	-	-	-	-	51
-	-	-	-	-	50
-	1	1	18024-3	SCR,BHC (M3X10)CAM	49
-	-	-	-	-	48
-	1	1	1338676-1	CAM, POST-FEED 30 & 40 mm ST	47
-	1	1	1338662-1	APPLICATOR, BASIC (SUBASSY)	46
-	1	1	690191-1	PLUG, NYLON	45
-	1	1	1320998-1	RAM	44
-	1	1	690125-1	WASHER, LAMINATED	43
-	1	1	690124-1	WASHER, RAM	42
-	1	1	2-18024-6	SCREW,BHC (M8X25)CRIMPER	41
-	1	1	23241-1	BALL, STEEL	40
-	1	1	2-22278-7	SPRING, COMPRESSION	39
-	1	1	1320922-1	DISC, INSULATION	38
-	1	1	354777-1	WIRE DISC, PLASTIC	37
-	1	1	22480-5	WASHER, SPRING	36
-	1	1	690212-1	POST, RAM	35
-	-	-	-	-	34
-	-	-	-	-	33
-	9	9	18025-2	WASHER, LOCK (M4) SHEAR BL	32
-	2	2	1-18024-0	SCR,BHC (M4X20)SHEAR PL	31
-	-	-	-	-	30
-	2	2	18024-8	SCR,BHC (M4X12)STRIPPER	29
-	1	1	3-690451-2	SPACER, STRIPPER	28
-	1	1	240639-1	STRIPPER	27
-	-	-	-	-	26
-	2	2	1320906-1	DRAG, STUD	25
-	1	1	1320995-1	STRIP GUIDE	24
-	1	1	240825-7	PLATE, STRIP HOLD DOWN	23
-	2	2	4-22281-1	SPRING, DRAG	22
-	-	-	-	-	21
-	1	1	1338665-1	DRAG, STOCK	20
-	-	-	-	-	19
-	2	2	1338663-3	GUIDE, LOWER STRIP	18
-	4	4	1-18024-8	SCR,BHC (M6X12)STRIP GD PL	17
-	1	1	1338708-1	SPACER, SLUG BLADE	16
-	-	-	-	-	15
-	-	-	-	-	14
-	1	1	690481-6	SPACER, HOLD DOWN	13
-	1	1	23846-1	SPRING, HOLD DOWN	12
-	1	1	240644-1	PLATE, REAR SHEAR	11
-	2	2	1-240645-1	SPACER, SHEAR PLATE	10
-	1	1	240642-2	PLATE, FRONT SHEAR	9
-	1	2	1333215-6	ANVIL	8
-	1	1	240651-9	BLADE, SLUG	7
-	1	1	2-455892-8	HOLD DOWN, TERMINAL	6
-	1	1	3-240641-7	SPACER, SLUG BLADE	5
-	1	1	238009-1	SPACER, BLOCK CRIMPER	4
-	1	2	1-456134-8	CRIMPER, INSULATION	3
-	1	1	455888-3	SPACER, CRIMPER	2
-	1	2	1-456404-8	CRIMPER, WIRE	1
-	77	71	-1	-	-

QTY REQD PER ASSY

REVISION OF EACH ASSY NO (WHEN BLANK, USE DWG REVISION)

PARTS LIST

REV	DATE	DESCRIPTION
E1	ECR-06-000513	TE 1-06
E	ECN 0150-0684-04	TE 5-04
D	ECN 0150-1156-03	TE 11-03
C	0150-0654-03	BH JUN03
B	0150-0141-03	RK FEB03
A1	SEE ECN 015A-0676-01	LJL AUG01
A	SEE ECN 015A-0154-01	MC FEB01
01	ADDED 0.70mm ² WIRE SIZE	MC FEB01

DR L. LOFTHOUSE 19JAN01 APP F. BACKHURST 19JAN01

CHK - REL 19-02-01 M. CLIFFORD

AMP Incorporated Harrisburg, PA 17105-3608

END FEED HD-I APPLICATOR

SCALE: 1:1

DWG NO: 1339540

SHEET 1 OF 1

REV: E1

CAGE CODE: 00779

CUSTOMER AND ASSEMBLY DRAWING