

4

3

2

1

THIS DRAWING IS UNPUBLISHED.

RELEASED FOR PUBLICATION

© COPYRIGHT

ALL RIGHTS RESERVED.

LOC

DIST


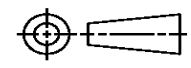
REVISIONS

P	LTR	DESCRIPTION	DATE	DWN	APVD

REPLACED BY OCEAN STYLE APPLICATOR PART NUMBER

FOR REPLACEMENT PARTS FOR APPLICATOR REFER TO ADDITIONAL PAGE(S). SPARE PARTS KIT (IF LISTED) WILL REMAIN AVAILABLE.

THE REPLACEMENT OCEAN STYLE APPLICATOR HAS THE SAME TERMINATOR/PRESS INTERFACE AS APPLICATOR

THIS DRAWING IS A CONTROLLED DOCUMENT.		DWN	 TE Connectivity		
DIMENSIONS:		CHK			
TOLERANCES UNLESS OTHERWISE SPECIFIED:		APVD	NAME		
	0 PLC ±	PRODUCT SPEC	RESTRICTED TO		
	1 PLC ±	APPLICATION SPEC	SIZE	CAGE CODE	DRAWING NO
	2 PLC ±	WEIGHT	A3		C-
	3 PLC ±				
4 PLC ±					
ANGLES ±					
MATERIAL	FINISH		SCALE	SHEET	OF
					REV

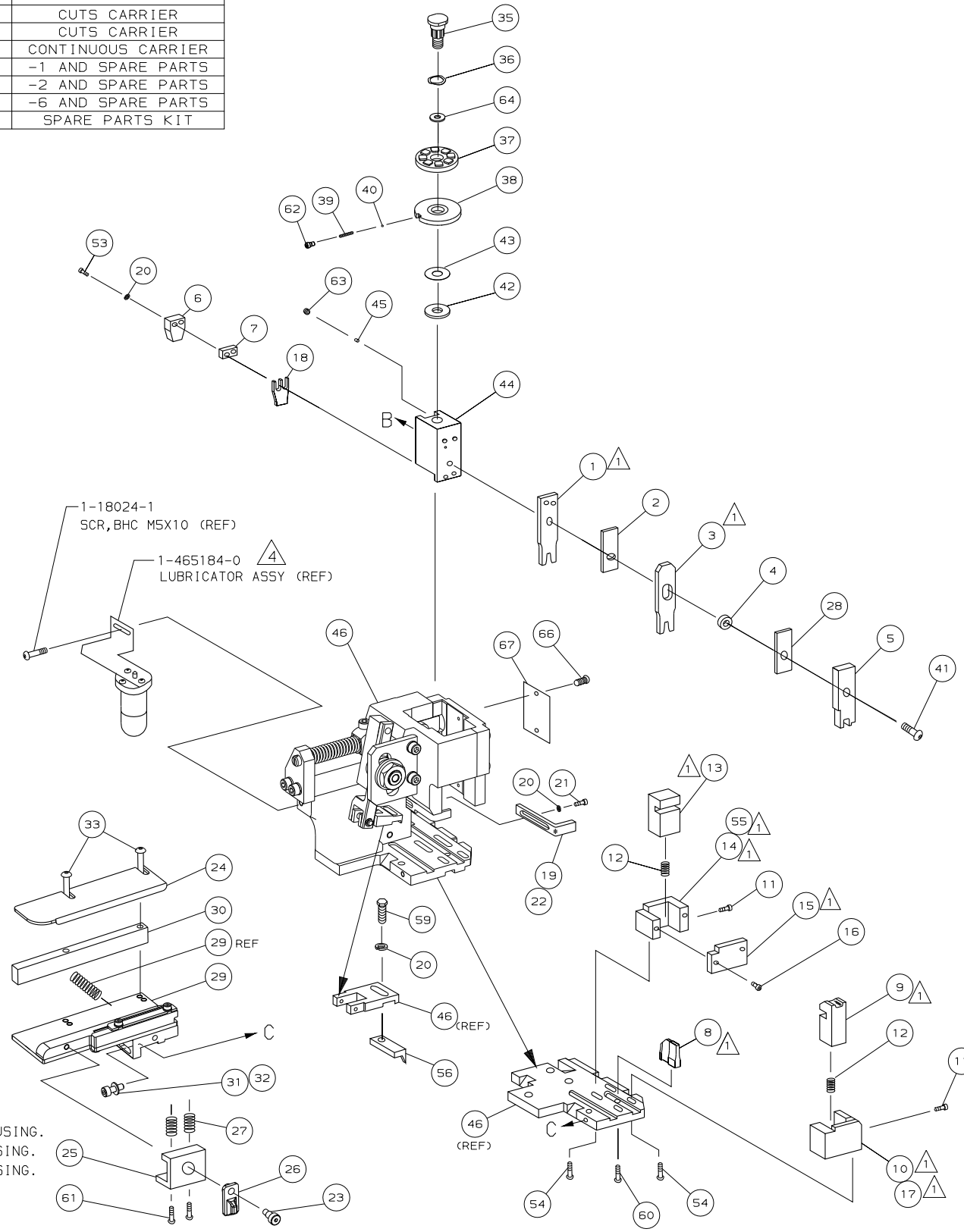
DRAWING MADE IN THIRD ANGLE PROJECTION

1238047 1238047

/home/us024474/tecm0d

PART NUMBER	REV	FIRST USED	TERMINATOR	FEED TYPE	DESCRIPTION
1238047-1	E		LEADMAKER	MECH POST FEED	CUTS CARRIER
1238047-2	E		BENCH	MECH PRE FEED	CUTS CARRIER
1238047-6	E		LEADMAKER	MECH POST FEED	CONTINUOUS CARRIER
7-1238047-1	E		LEADMAKER	MECH POST FEED	-1 AND SPARE PARTS
7-1238047-2	E		BENCH	MECH PRE FEED	-2 AND SPARE PARTS
7-1238047-6	E		LEADMAKER	MECH POST FEED	-6 AND SPARE PARTS
7-1238047-7	D				SPARE PARTS KIT

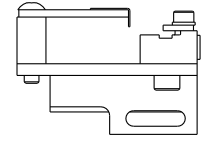
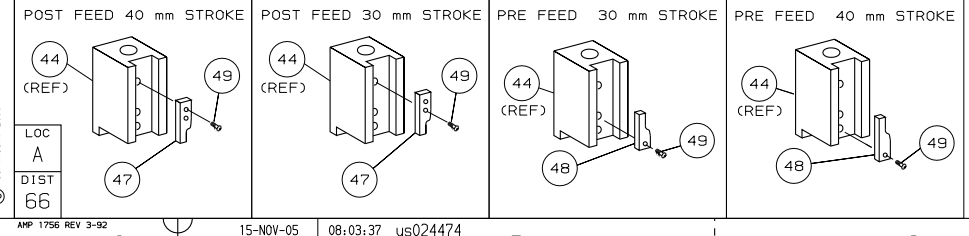
CRIMP DATA (AMP TERMINAL)			
TERMINAL NAME: CONTACT MOD IV CRIMP SNAP-IN			
CRIMP	SIZE	TYPE	RANGE
WIRE	1.40 [.055 IN]	F	24-20
INSUL	1.57 [.062 IN]	0	
WIRE STRIP LENGTH		APPL INSTRUCTION	
3.58-4.78 [.141-.188 IN]		408-8322	
TERMINAL		FEED	
APPL SPEC 114-25003		7.62 [.300 IN]	
TERMINALS APPLIED			
85969	-	-	-
86492	-	-	-
87195	-	-	-
87309	-	-	-
87523	-	-	-
102680	-	-	-
104455	-	-	-
-	-	-	-
WIRE SIZE	CRIMP HEIGHT	PIN PN & LENGTH [IN]	
mm ² AWG			
20 AWG or 0.50mm ²	0.89 ±0.05 [.035 ±.002 IN]	5-354779-9 [.3285]	
22 AWG	0.79 ±0.05 [.031 ±.002 IN]	6-354779-7 [.3325]	
24 AWG	0.69 ±0.05 [.027 ±.002 IN]	7-354779-9 [.3385]	



QTY	REQD	PER	ASSY	PART NO	DESCRIPTION	ITEM NO		
-	1	1	1	1	1	1238047	PRINT, APPLICATOR LOG SHEET	73
-	1	1	1	1	1	1338705-1	DOCUMENTATION PACKAGE	72
								70
								69
								68
-	1	1	1	1	1	461264-1	PLATE, IDENTIFICATION	67
-	2	2	2	2	2	21017-2	SCR, DRIVE (#2X.19) ID PLATE	66
								65
-	1	1	1	1	1	986950-1	WASHER, FLAT PRECISION	64
-	1	1	1	1	1	3-18031-0	SCR, SKT SET (M6X6) RAM	63
-	1	1	1	1	1	18023-9	SCR, SHC (M4X6) INS DISC	62
-	2	2	2	2	2	1-18024-5	SCR, BHC (M5X25) DRAG	61
-	1	1	1	1	1	18024-7	SCR, BHC (M4X10) ANVIL	60
-	1	1	1	1	1	5-18022-2	SCR, HEX (M4X8) FEED FINGER	59
								58
								57
-	1	1	1	1	1	1338685-1	PAWL, FEED	56
-	1	-	-	-	-	1338723-1	HOLDER, SHEAR, REAR (NO CUT)	55
-	2	2	2	2	2	18024-8	SCR, BHC (M4X12) SHEAR HOLDER	54
-	2	2	2	2	2	1-18023-3	SCR, SHC (M4X16) TERM HLD DWN	53
								52
								51
								50
-	1	1	1	1	1	18024-3	SCR, BHC (M3X10) CAM	49
-	-	-	-	-	-	1338675-1	CAM, PRE FEED 30 & 40 mm ST	48
-	1	-	-	-	-	1338676-1	CAM, POST FEED 30 & 40 mm ST	47
-	1	1	1	1	1	1320999-3	APPLICATOR BASIC SUBASSY	46
-	1	1	1	1	1	690191-1	PLUG, NYLON	45
-	1	1	1	1	1	1338660-1	RAM	44
-	1	1	1	1	1	690125-1	WASHER, LAMINATED	43
-	1	1	1	1	1	690124-1	WASHER, RAM	42
-	1	1	1	1	1	2-18024-6	SCR, BHC (M8X25) RAM	41
-	1	1	1	1	1	23241-1	BALL, STEEL	40
-	1	1	1	1	1	2-22278-7	SPRING, COMPRESSION	39
-	1	1	1	1	1	1320922-4	DISC, INSULATION	38
-	1	1	1	1	1	354777-1	WIRE DISC, PLASTIC	37
-	1	1	1	1	1	22480-5	WASHER, SPRING	36
-	1	1	1	1	1	690212-1	POST, RAM	35
								34
-	2	2	2	2	2	1-18024-0	SCR, BHC (M4X20) STRIP GUIDE	33
-	1	1	1	1	1	18027-2	WASHER, FLAT (M4)	32
-	1	1	1	1	1	1-18023-2	SCR, SKT CAP (M4X12) MOUNT BLOCK	31
-	1	1	1	1	1	1320908-9	SPACER, STRIP GUIDE	30
-	1	1	1	1	1	1633073-1	STRIP GUIDE PLATE ASSY	29
-	1	1	1	1	1	1-455888-0	SPACER, FRONT SHEAR DEP	28
-	2	2	2	2	2	1-22284-0	SPRING, DRAG	27
-	1	1	1	1	1	356835-1	LEVER, DRAG RELEASE	26
-	1	1	1	1	1	679754-1	DRAG, TERMINAL	25
-	1	1	1	1	1	1320928-1	PLATE, STRIP GUIDE	24
-	1	1	1	1	1	980371-4	SCR, SHC SHLD	23
-	1	-	-	-	-	690472-2	STRIPPER	22
-	1	1	1	1	1	1-18023-1	SCR, SHC (M4X10) STRIPPER	21
-	4	4	4	4	4	18025-2	WASHER, LOCK (M4) STRIPPER	20
-	-	-	-	-	-	690472-1	STRIPPER	19
-	1	1	1	1	1	690518-1	HOLDER, TERMINAL	18
-	1	-	-	-	-	1338684-1	HOLDER, SHEAR, FRONT (NO-CUT)	17
-	2	2	2	2	2	18023-2	SCR, SHC (M3X6) REAR SHEAR PL	16
-	1	1	1	1	1	690691-4	PLATE, SHEAR (REAR)	15
-	-	-	-	-	-	1320920-1	HOLDER, SHEAR, REAR (CUT)	14
-	1	1	1	1	1	690463-1	SHEAR, FLOAT (REAR)	13
-	2	2	2	2	2	5-22280-0	SPRING, SHEAR	12
-	2	2	2	2	2	356885-4	STOP, SHEAR	11
-	-	-	-	-	-	1320921-1	HOLDER, SHEAR, FRONT (CUT)	10
-	1	1	1	1	1	462006-1	SHEAR, FLOAT (FRONT)	9
1	2	2	2	1	1	1338701-1	ANVIL	8
-	1	1	1	1	1	4-240641-1	SPACER, DEPRESSOR (REAR)	7
-	1	1	1	1	1	690468-1	DEPRESSOR, SHEAR (REAR)	6
-	1	1	1	1	1	455889-9	DEPRESSOR, SHEAR (FRONT)	5
-	1	1	1	1	1	238011-7	SPACER, BLOCK CRIMPER	4
1	2	2	2	1	1	8-456135-3	CRIMPER, INSULATION	3
-	1	1	1	1	1	455888-1	SPACER, CRIMPER	2
1	2	2	2	1	1	3-456402-1	CRIMPER, WIRE	1

- 1. RECOMMENDED SPARE PARTS.
- 2. GREASE RAM, CAM, CAM FOLLOWER AND FEED ROD LIGHTLY.
- 3. LUBRICATE DAILY PER THE APPLICATOR INSTRUCTION SHEET SUPPLIED WITH THE APPLICATOR.
- 4. CERTAIN TERMINALS REQUIRE LUBRICATION. REFER TO THE APPLICATOR INSTRUCTION SHEET FOR MORE INFORMATION.
- 5. MAX INS Ø 1.75 [.069] WHEN USED IN 15.24 [.600] HIGH HOUSING.
MAX INS Ø 1.4 [.055] WHEN USED IN 16.38 [.645] HIGH HOUSING.
MAX INS Ø 1.4 [.055] WHEN USED IN 13.84 [.545] HIGH HOUSING.

VIEW B ROTATED 180°



DIMENSIONS, mm [INCHES]		MATERIAL		HT TR		FIN	
DO NOT SCALE PRINT. TOLERANCES UNLESS OTHERWISE SPECIFIED, 1 PLC DEC ±0.5 [.02 IN], 2 PLC DEC ±, 3 PLC DEC ±.							
DR V. FURLER 12JUN00 APP 12JUN00 T. ELBIN				CHK - REL 07-09-00 M. CLIFFORD			
NAME SIDE FEED HD-I APPLICATOR				MACHINE REF HD-I APPL			
SCALE -				DWG NO 1238047		SHEET 1 of 1 REV E2	
P F LTR E2 ECR-05-015026 RK NOV05 APP DATE				REMOVE BURRS SHARP EDGES BREAK RO.3B MAX			
00779				CUSTOMER AND ASSEMBLY DRAWING			

THIS DRAWING IS A CONTROLLED DOCUMENT
 LAYOUT L2400
 SET UP GAGE 458637-3
 RELEASED FOR PUBLICATION BY AMP INCORPORATED. ALL RIGHTS RESERVED.
 THIS DRAWING IS UNPUBLISHED. © COPYRIGHT 2000 AMP 1756 REV 3-92