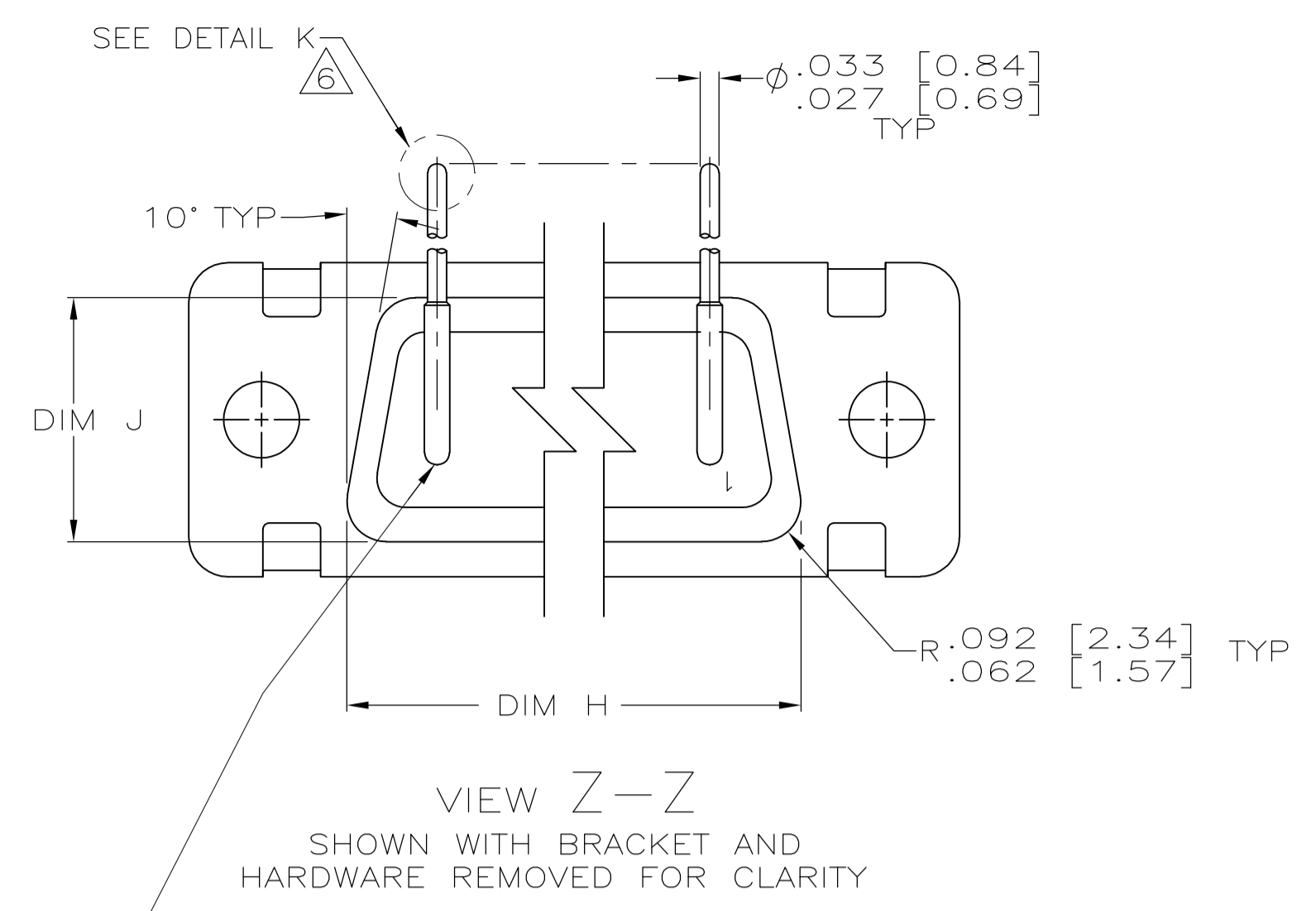
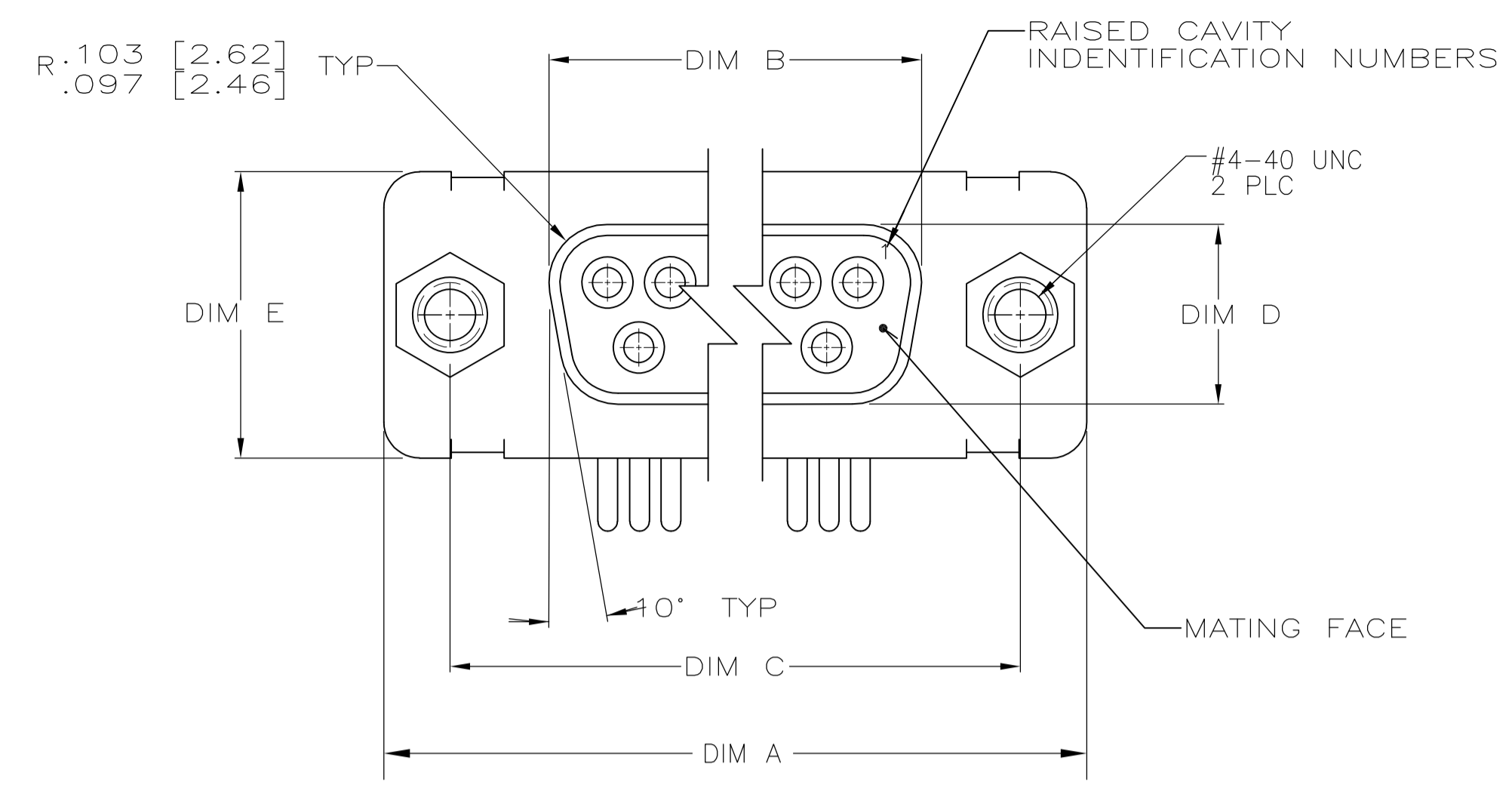
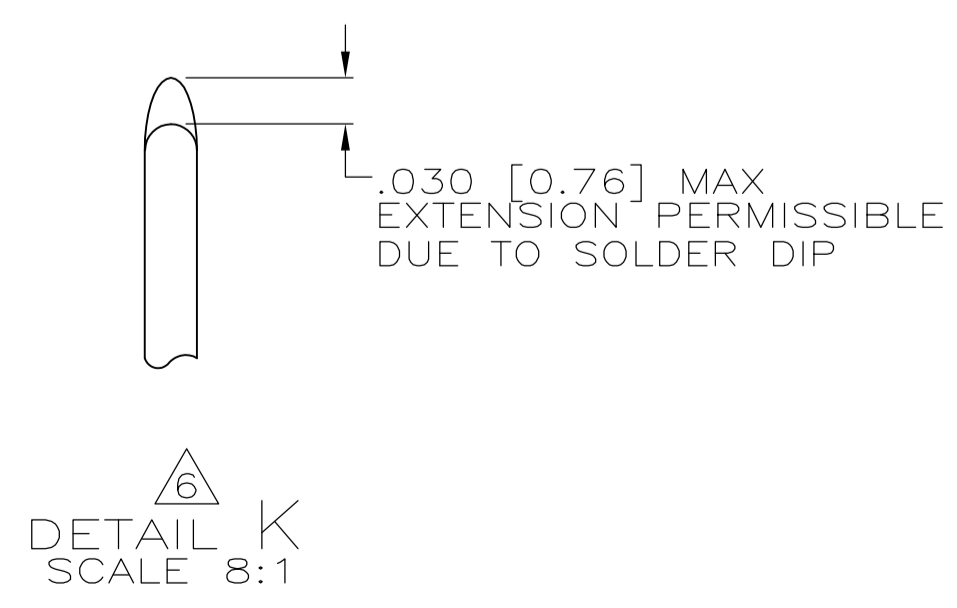
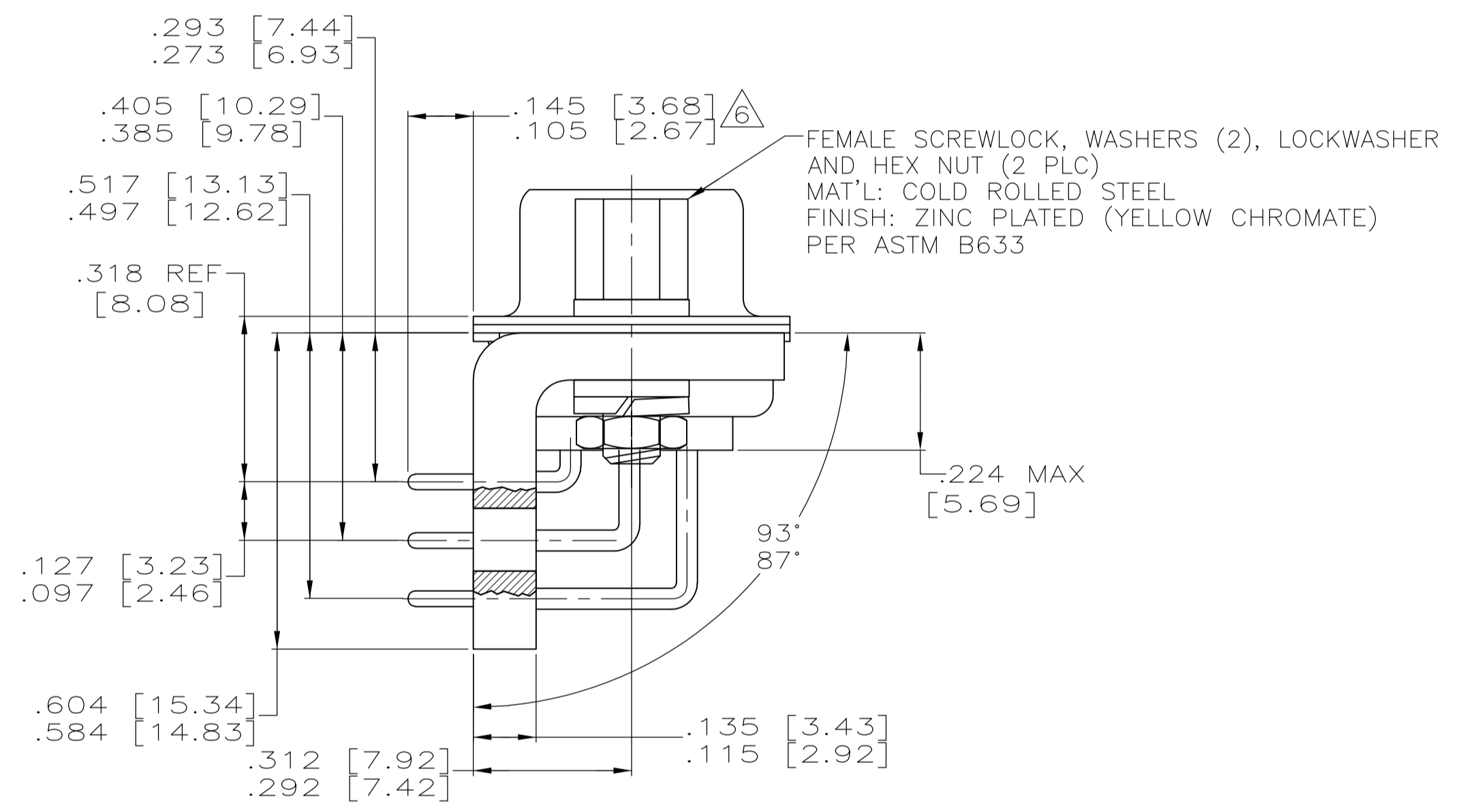
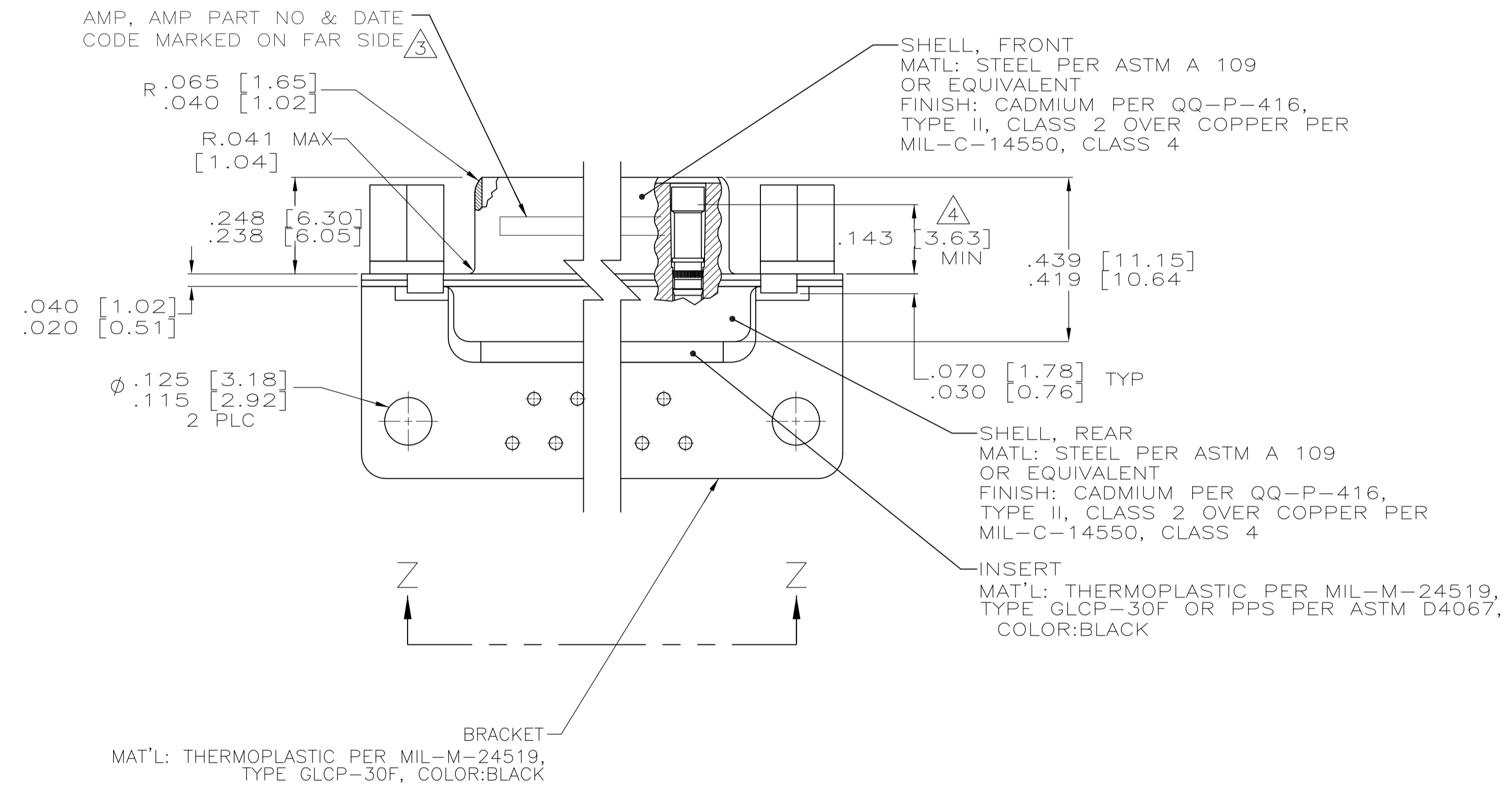


| LOC |     | DIST                  |         | REVISIONS |      |  |  |
|-----|-----|-----------------------|---------|-----------|------|--|--|
| P   | LTR | DESCRIPTION           | DATE    | DMN       | APVD |  |  |
| B   |     | REV PER ECO 08-007821 | 3-31-08 | CT        | DM   |  |  |



CONTACT (QTY = NO. OF POSN)  
 MATL: BRASS PER ASTM-B-16, OR BERYLLIUM COPPER PER ASTM-B-194  
 FINISH: GOLD PER MIL-G-45204, TYPE II, GRADE C, CLASS 1 IN CONTACT MATING AREA, .000010 [0.0003] MIN THK GOLD PER MIL-G-45204 OVER .000050 [0.0013] MIN THK NICKEL PER QQ-N-290 ON CONTACT BODY

- 1. TRUE POSITION TOLERANCE FOR P.C.BOARD LAYOUT IS .010 [0.25] AT MAX MATERIAL CONDITION. SUGGESTED BOARD THICKNESS IS .125 [3.18]
- 2. THE CONNECTORS DESCRIBED IN THIS DOCUMENT MEET THE REQUIREMENTS OF MIL-C-24308 AND MATE WITH ANY PLUG CONNECTOR WITH SAME INSERT ARRANGEMENT.
- 3. MARKED WITH .047 [1.19]-.062 [1.57] HIGH CHARACTERS. FAR SIDE REFERS TO THE WIDE SIDE OF THE KEYSTONE. NEAR SIDE REFERS TO THE NARROW SIDE OF THE KEYSTONE. IF THE FRONT SHELL IS TOO SMALL FOR "AMP", AMP PART NUMBER AND DATE CODE, MARKING SHALL BE SPLIT AS FOLLOWS:  
 A. AMP PART NUMBER ON REAR SHELL, NEAR SIDE.  
 B. "AMP" AND DATE CODE ON FRONT SHELL, NEAR SIDE.
- 4. POINT OF ELECTRICAL ENGAGEMENT - AS MEASURED WITH A .0390 [0.991]-.0393 [0.998] DIA SQUARE ENDED TEST PIN.
- 5. THIS DRAWING SHALL BE INTERPRETED IN ACCORDANCE WITH APPLICABLE STANDARDS LISTED IN MIL-STD-100.
- 6. SOLDER DIP PER MIL-STD-2000 COMPOSITION Sn63 CONFORMING TO QQ-S-571 IN THE ENTIRE AREA OF DIMENSION SHOWN.



Tyco Electronics  
 NOTICE  
 NOT RELEASED  
 PRELIMINARY

|                              |                                |                              |                              |                                |                                |                                |                    |           |            |              |
|------------------------------|--------------------------------|------------------------------|------------------------------|--------------------------------|--------------------------------|--------------------------------|--------------------|-----------|------------|--------------|
| .544 [13.82]<br>.524 [13.31] | 2.188 [55.58]<br>2.168 [55.07] | .620 [15.75]<br>.590 [14.99] | .428 [10.87]<br>.418 [10.62] | 2.411 [61.24]<br>2.401 [60.99] | 2.069 [52.55]<br>2.059 [52.30] | 2.650 [67.31]<br>2.620 [66.55] | MS18277-1          | 50        | 5          | 1-1218636-0  |
| DIM J                        | DIM H                          | DIM E                        | DIM D                        | DIM C                          | DIM B                          | DIM A                          | INSERT ARRANGEMENT | NO OF POS | SHELL SIZE | AMP PART NO. |

| DIMENSIONS: |              | TOLERANCES UNLESS OTHERWISE SPECIFIED: |              | APVD             |         | NAME             |           |
|-------------|--------------|--|--------------|------------------|---------|------------------|-----------|
| INCHES      |              |  |              | C.C.THOMAS       | 1-10-00 | CHAD BAKER       | 1-14-00   |
| 0 PLC       | ±            | -                                      |              | CHAD BAKER       | 1-14-00 | NAME             |           |
| 1 PLC       | ±            | -                                      |              | PRODUCT SPEC     |         |                  |           |
| 2 PLC       | ±            | -                                      |              | APPLICATION SPEC |         |                  |           |
| 3 PLC       | ±            | 0.10 [0.25]                            |              |                  |         |                  |           |
| 4 PLC       | ±            | -                                      |              |                  |         |                  |           |
| ANGLES      | ±            | 1°                                     |              |                  |         |                  |           |
| MATERIAL    | SEE CALLOUTS | FINISH                                 | SEE CALLOUTS | WEIGHT           |         | SIZE             | CAGE CODE |
|             |              |  |              |                  |         | A1               | 00779     |
|             |              |  |              |                  |         | DRAWING NO       | 1218636   |
|             |              |  |              |                  |         | RESTRICTED TO    |           |
|             |              |  |              |                  |         | CUSTOMER DRAWING |           |
|             |              |  |              |                  |         | SCALE            | 4:1       |
|             |              |  |              |                  |         | SHEET            | 1 of 1    |
|             |              |  |              |                  |         | REV              | B         |