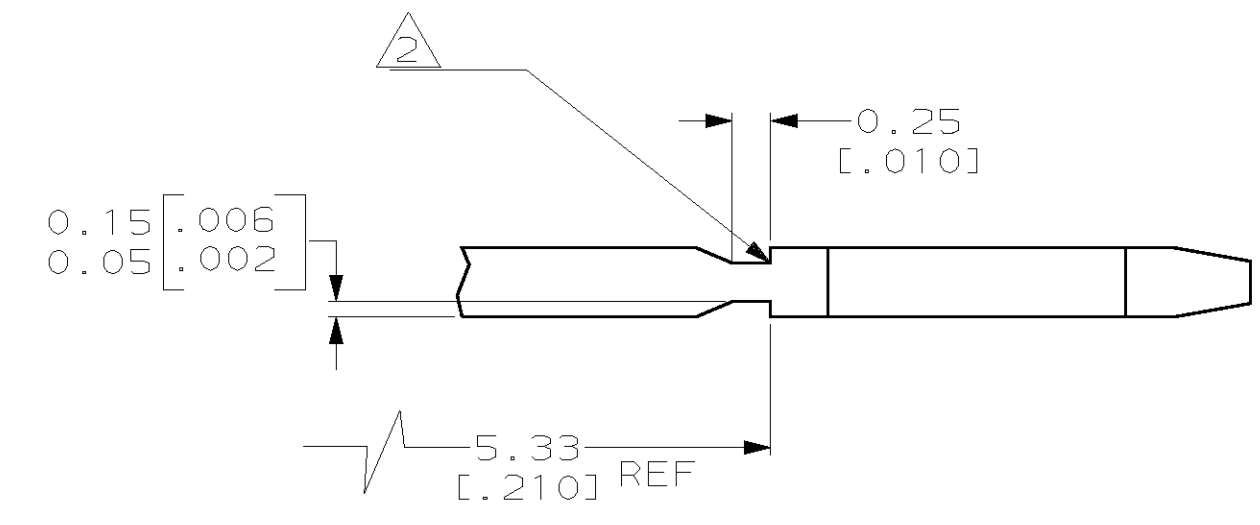
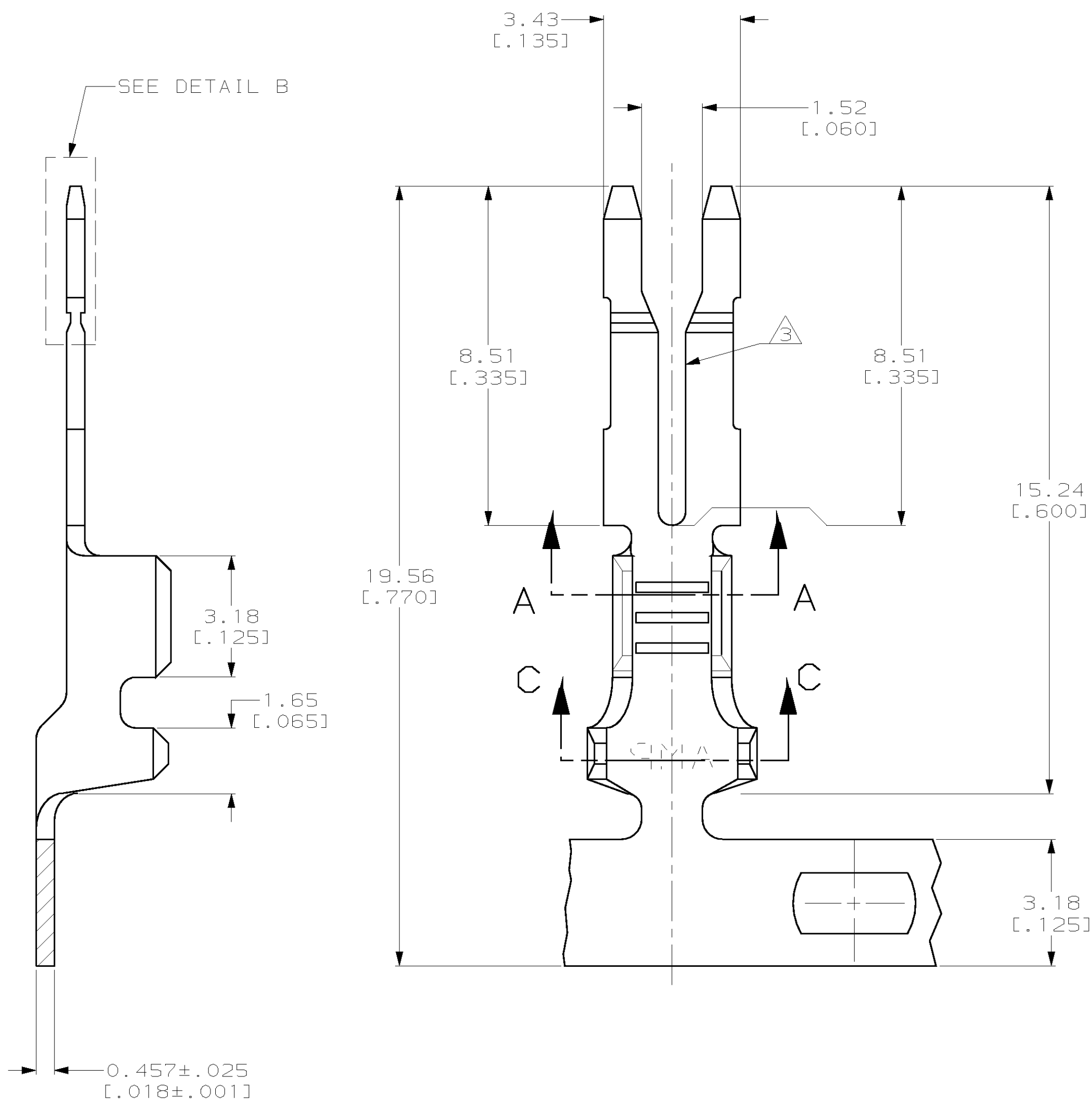


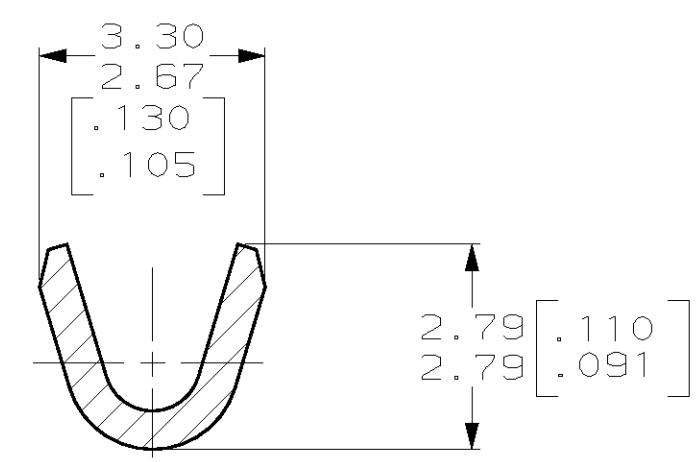
THIS DRAWING IS UNPUBLISHED. RELEASED FOR PUBLICATION  
 (C) COPYRIGHT 19 BY AMP INCORPORATED. ALL RIGHTS RESERVED.

LOC		DIST		REVISIONS			
P	LTR	DESCRIPTION	DATE	DWN	APVD		
AF	50	C	REV PER 063A-0542-01	030CT01	JR	KR	

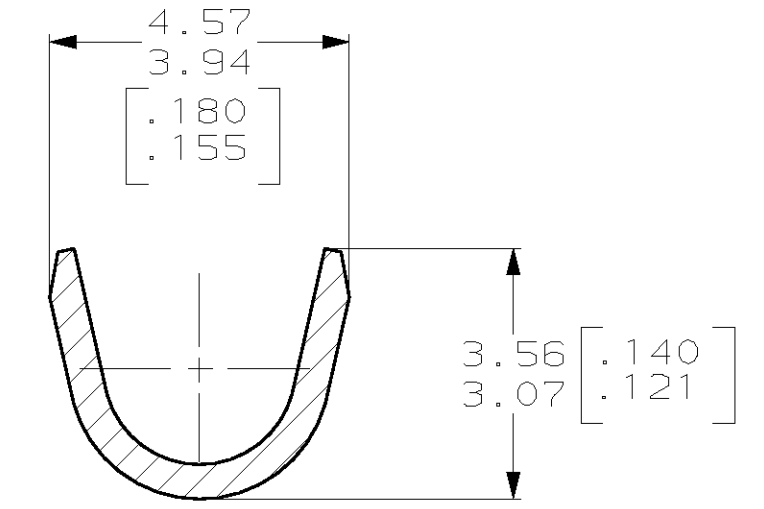
- 1 CONTINUOUS STRIP ON REELS
- 2 FOR OPTIMUM RETENTION IN POKE-IN TYPE MAG-MATE TERMINALS, THE SERRATION AS SHOWN MUST BE ENGAGED WITH THE EDGE OF THE LEAF
- 3 SLOT ACCEPTS A SINGLE 0.8mm [#20] AWG SOLID BARE COPPER WIRE.



DETAIL B  
 SCALE 20:1  
 ROTATED 90° C.W.



SECTION A-A



SECTION C-C

1.52-2.54 [.060-.100] DIA	#22-#18 AWG	1217470-1
INSULATION RANGE	WIRE RANGE	PART NUMBER

THIS DRAWING IS A CONTROLLED DOCUMENT.		DWN MICHAEL S. FEHER	AMP Incorporated Harrisburg, PA 17105-3608	
DIMENSIONS: mm [INCHES]		CHK KURT A. RANDOLPH	NAME TAB, POKE-IN, DIODE SLOT, MAG-MATE™	
TOLERANCES UNLESS OTHERWISE SPECIFIED: 0 PLC ± 1 PLC ± 2 PLC ±0.25 [.010] 3 PLC ± 4 PLC ± ANGLES ±		APVD KURT A. RANDOLPH	PRODUCT SPEC 108-22045	
MATERIAL 082 BRASS		FINISH 0.002032 [.000080] MIN PRE-TIN PLATE	APPLICATION SPEC 114-2050	RESTRICTED TO
CUSTOMER DRAWING		WEIGHT -	SIZE A2	CAGE CODE 00779
		SCALE 10:1	DRAWING NO 1217470	REV C