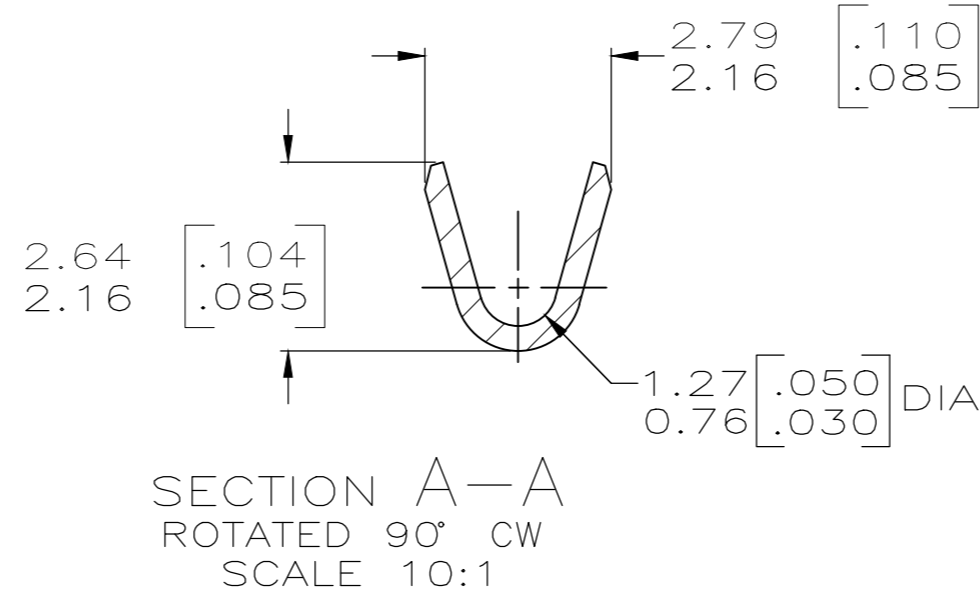
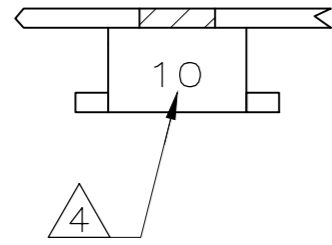
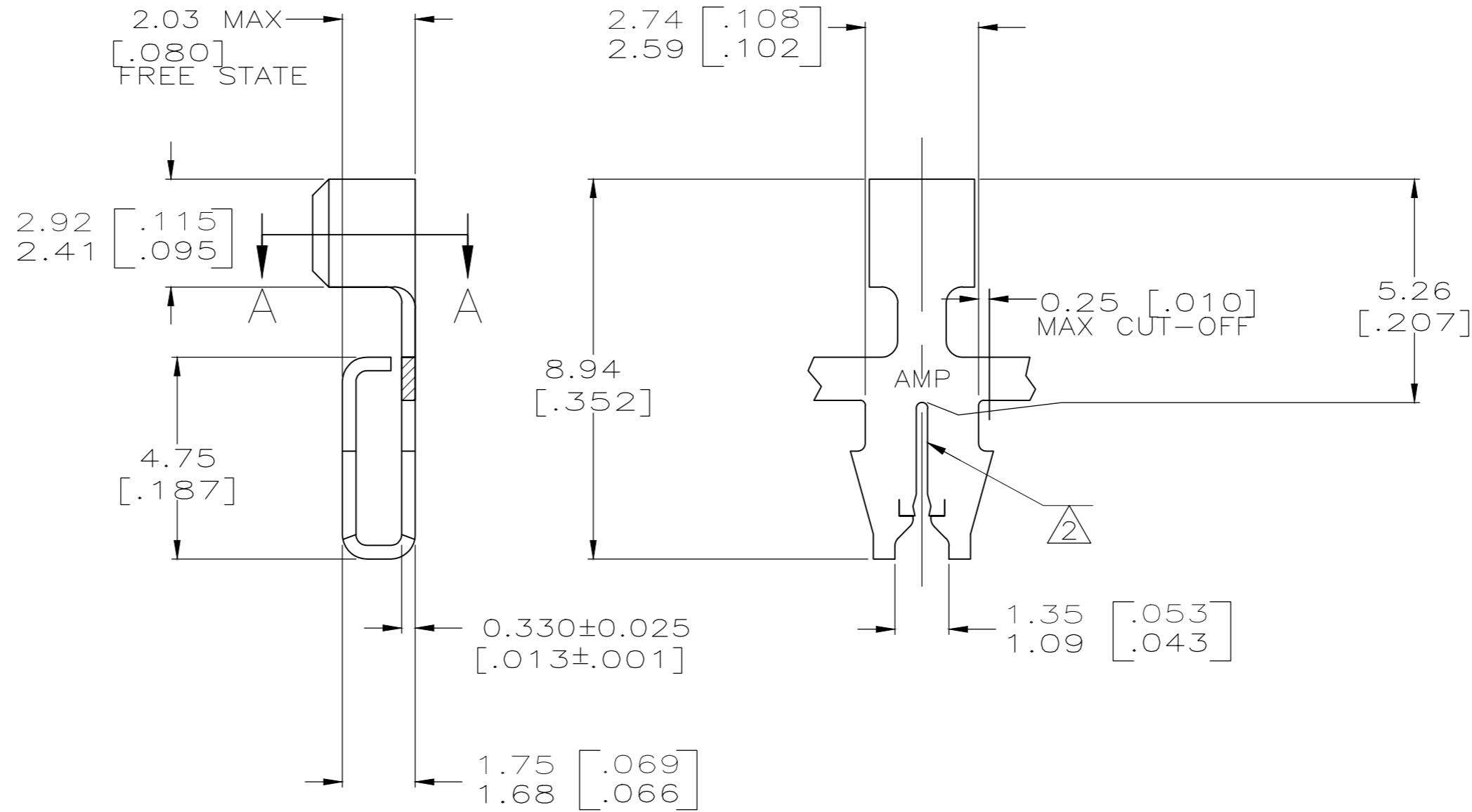
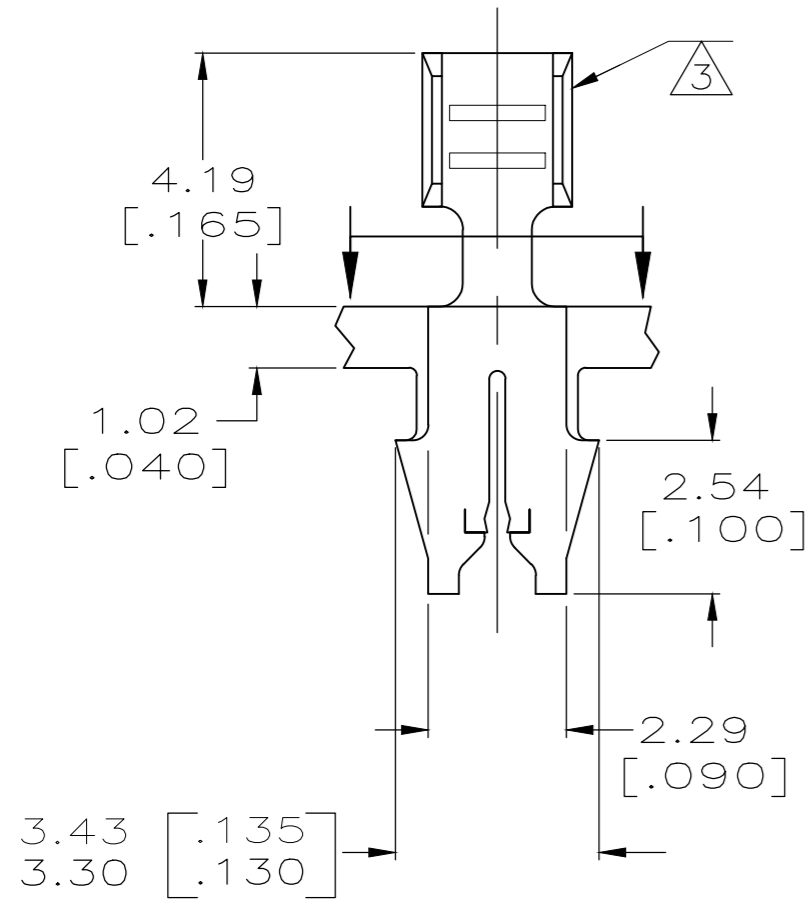


THIS DRAWING IS UNPUBLISHED. RELEASED FOR PUBLICATION  
 © COPYRIGHT - - ALL RIGHTS RESERVED.

REVISIONS				
P	LTR	DESCRIPTION	DATE	APVD
A3		RELEASE 1217146-2 TO PRODUCTION	15SEP2018	BW SV



- 1 CONTINUOUS STRIP ON REELS (NO SPLICES) WITH TERMINALS LOCATED ON  $8.38 \pm 0.08$  [.330 ± .003] CENTERS.
- 2 SLOT ACCEPTS 0.40–0.51mm [#26–#24] AWG COPPER MAGNET WIRE 2 WIRES MAX OF THE SAME SIZE PER SLOT.
- 3 WIRE BARREL ACCEPTS 0.3–1.0mm [#22–#18] AWG LEAD WIRE.
- 4 IDENTIFICATION NUMBER 10 FOR WIRE SLOT SIZE.



3.56 [.140]	F	1.78 [.070]	1.08 [.043]	0.4mm [22]
			1.18 [.047]	0.5mm [20]
			1.32 [.052]	0.8mm [18]
STRIP LENGTH ±015	TYPE	WIDTH	±051 [±.002] HEIGHT	WIRE
WIRE BARREL CRIMP				

THIS DRAWING IS A CONTROLLED DOCUMENT.		DWN	31MAR1999	MICHAEL S. FEHER
DIMENSIONS: mm [INCHES]		CHK	01APR1999	JEFF R. RUTH
TOLERANCES UNLESS OTHERWISE SPECIFIED:		APVD	09APR1999	KURT A. RANDOLPH
0 PLC ± -		PRODUCT SPEC		
1 PLC ± -		108-2012		
2 PLC ± 0.13 [.005]		APPLICATION SPEC		
3 PLC ± -		114-2069		
4 PLC ± -		WEIGHT 0		
ANGLES ± -		CUSTOMER DRAWING		
MATERIAL BRASS		FINISH -		SIZE A2
		CAGE CODE 00779		DRAWING NO. 1217146
		SCALE 8:1		SHEET 1 of 1
		REV A3		RESTRICTED TO -

TIN	1217146-2
TIN OVER NICKEL	1217146-1
FINISH	PART NUMBER

**STE** TE Connectivity

TERMINAL, F-CRIMP,  
 187 SERIES MAG-MATE™