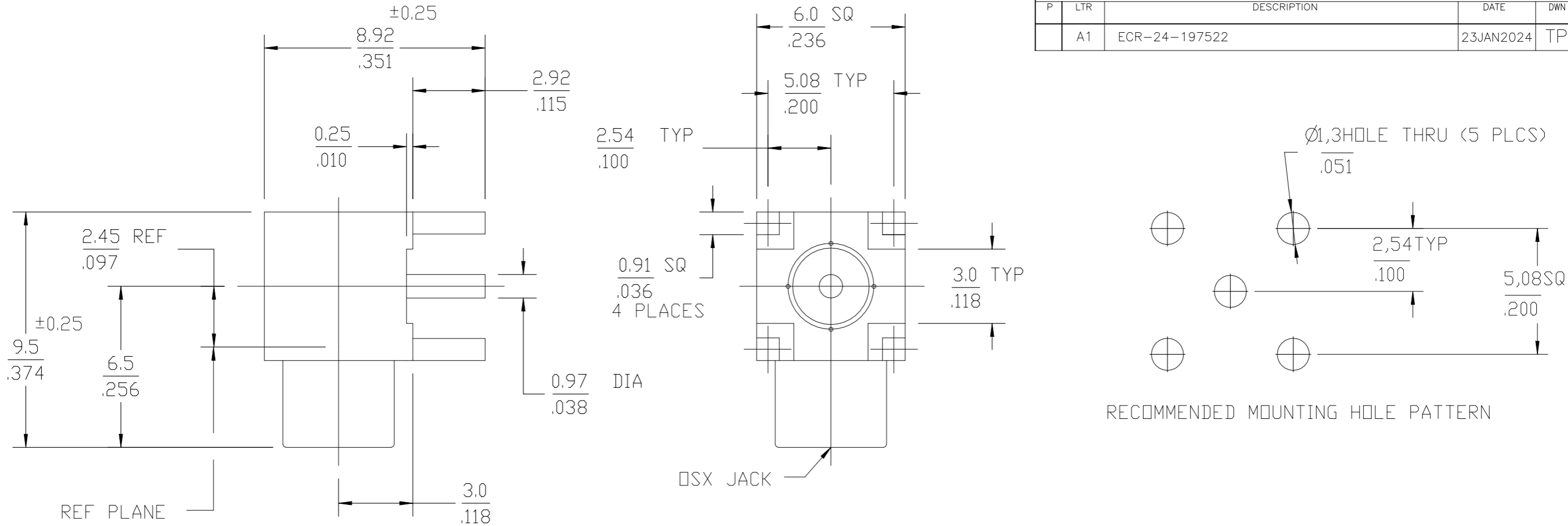


P	LTR	DESCRIPTION	DATE	DWN	APVD
	A1	ECR-24-197522	23JAN2024	TP	WH



NOTES:  
 1. CAPTURED CENTER CONTACT  
 2. TE PART NUMBER: 1061030-1

ELECTRICAL	MECHANICAL	ENVIRONMENTAL
Nominal Impedance (Ohms) 50	Force to Engage: (Lbs) 3.4 MAX	Temperature Rating -65° to +165°C
Frequency Range (GHz) DC to 6.0	& Disengage: (Lbs) 1.77 MIN - 4.5 MAX	Vibration MIL-STD-202, Method 204, Condition B
Volt Rating (VRMS MAX) @ Sea Level 335	Center Contact Captivation Axial (Lbs) 3.0 @ 1 minute with .006" Displacement	Thermal Shock MIL-STD-202, Method 107, Condition B
VSWR N/A		Moisture Resistance MIL-STD-202, Method 106
Insertion Loss N/A		Corrosion - MIL-STD-202, Method 101, Condition B, 48 Hrs
Corona, 70,000 Ft (VRMS MIN) 250		
Dielectric Withstanding Voltage (VRMS MIN) @ Sea Level 1000		
Contact Resistance (Milliohms MAX) Center Contact 5.0		
Outer Contact 1.0		
RF High Potential @ Sea Level (VRMS MIN @ 5 MHz) 670		
I.R. (Megohms MIN) 10,000		

XX.XX = mm  
 .XXX = in

COMPONENT	MATERIAL	FINISH
HOUSING CAP	BRASS PER ASTM-B-16 HALF HARD	NICKEL PLATE PER QQ-N-290
DIELECTRIC	TFE FLUOROCARBON PER ASTM-D-1457	N/A
CENTER CONTACT	BERYLLIUM COPPER PER ASTM B 196, ALLOY C17300, CONDITION H	GOLD PLATE PER MIL-G-45204

THIS DRAWING IS A CONTROLLED DOCUMENT.		DWN TP 23JAN2024	<b>STE</b> TE Connectivity	
		CHK ED 23JAN2024		
		APVD WH 23JAN2024	NAME 5864 5003 10,OSX PCB RA JACK	
		PRODUCT SPEC		
		APPLICATION SPEC		
		WEIGHT 0	SIZE A3	CAGE CODE 00779
			DRAWING NO C-1061030	RESTRICTED TO
		CUSTOMER DRAWING	SCALE 1:1	SHEET 1 OF 1
				REV A1