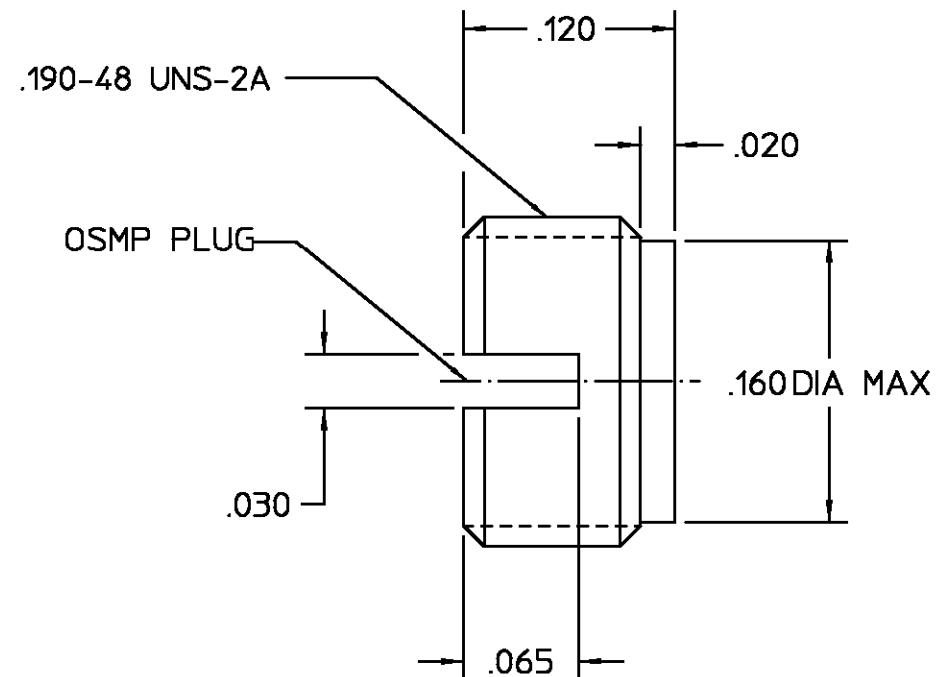
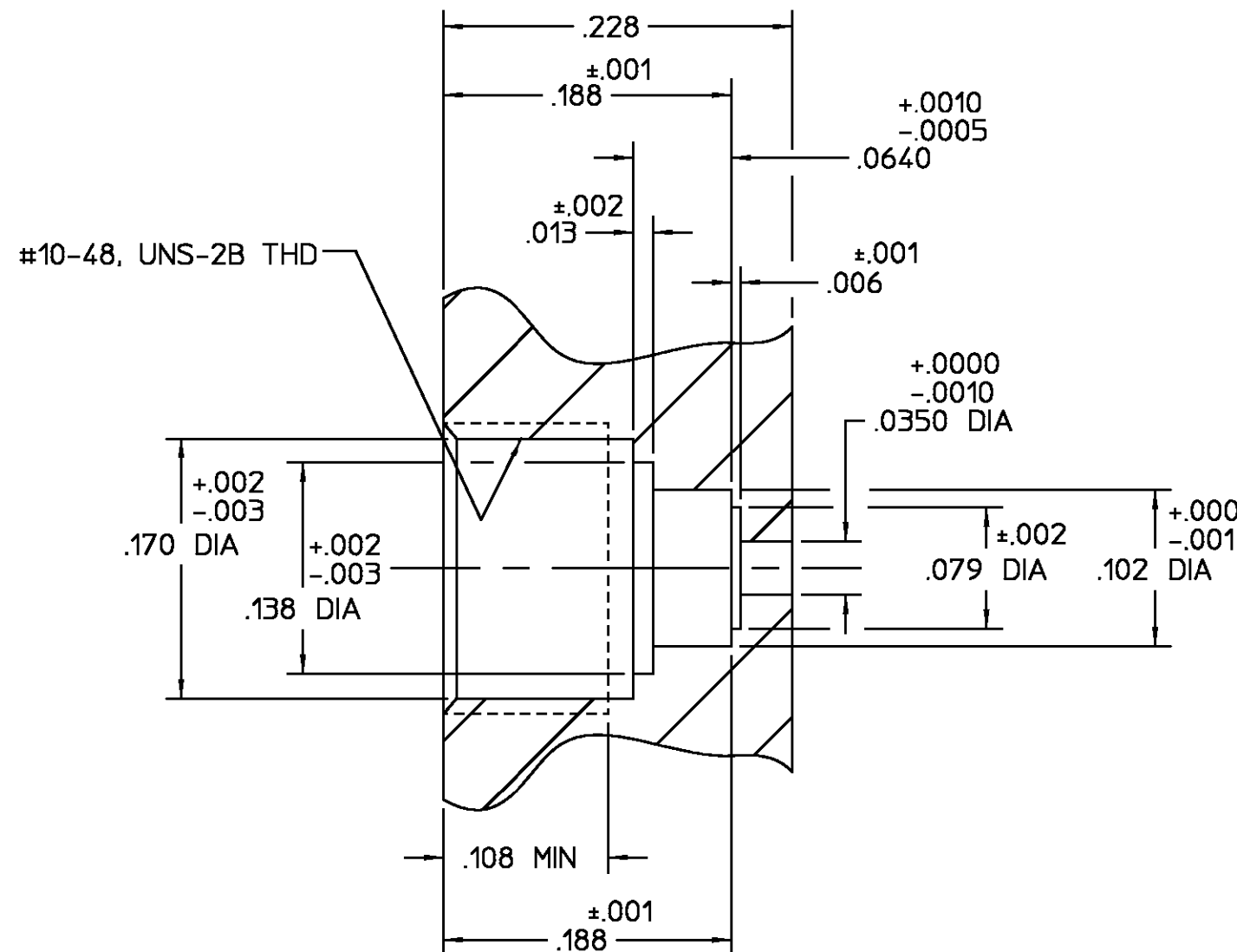


REVISIONS			
REV	DESCRIPTION	DATE	APPROVED
01 ₁	REVISED	5/10/96	<i>[Signature]</i> 5/10/96



RECOMMENDED MOUNTING HOLE

HOUSING	STAINLESS STEEL PER ASTM-A484 AND ASTM-A582, TYPE 303	PASSIVATE PER ASTM-A380
COMPONENT	MATERIAL	FINISH
<small>UNLESS OTHERWISE SPECIFIED DIMENSIONS ARE IN INCHES TOLERANCE ON</small> <small>FRAC. DEC. ANGLES</small> <small>± 1/64 ± .005 ± 1°</small>	<small>DRAWN BY</small> <i>BB</i> <small>DATE</small> 3/30/94 <small>CHECKED BY</small> <small>APP'D BY</small> <i>[Signature]</i> 4/11/94	<small>AMP Incorporated</small> 140 Fourth Avenue Waltham, MA 02451-7599
	<small>USE ASSY PROCEDURE</small> <small>NO. AP</small> 29-015	<small>TITLE</small> OSMP SHROUD FULL DETENT
<small>These drawings and specifications are the property of M/A-COM incorporated and shall not be reproduced or copied or used in whole or in part as the basis for the manufacture or sale of item(s) without written permission.</small>	<small>SIZE</small> B <small>SCALE</small> 10:1	<small>CODE IDENT NO.</small> 26805 <small>2998-5045-02</small> <small>REV</small> 01 ₁ <small>SHEET 1 OF 1</small>

CUSTOMER DRAWING

AMP PART # 1056745-1
SHEET 1 OF 1 REV A