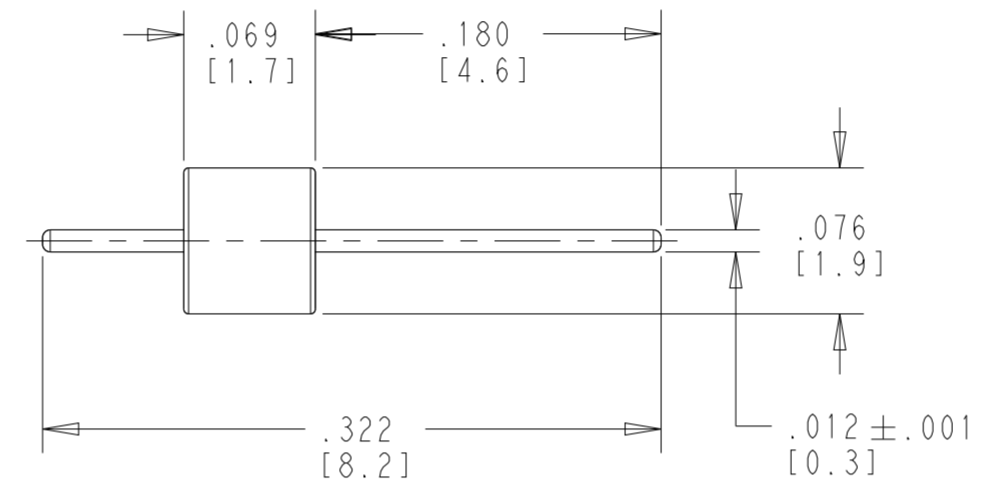
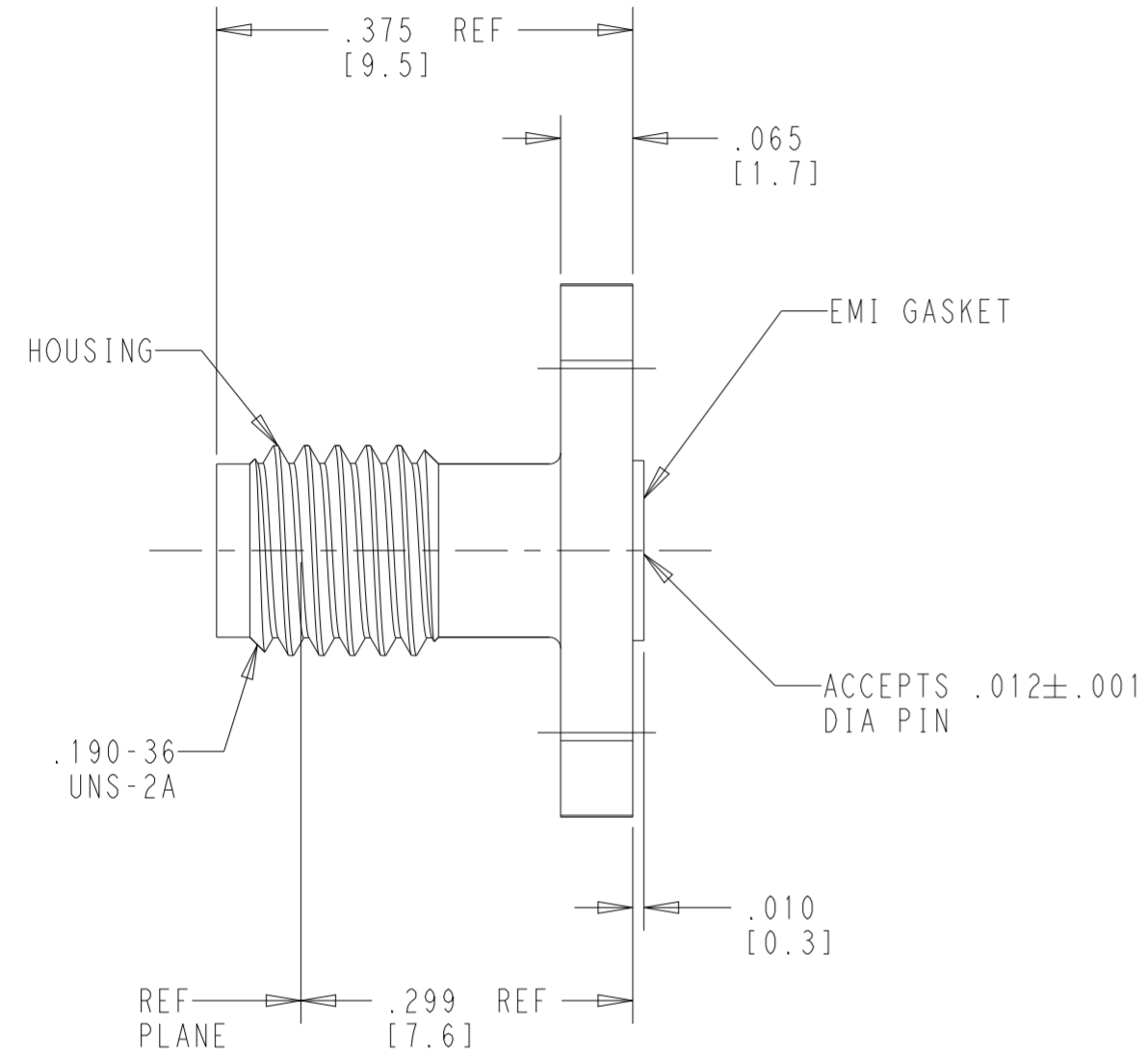
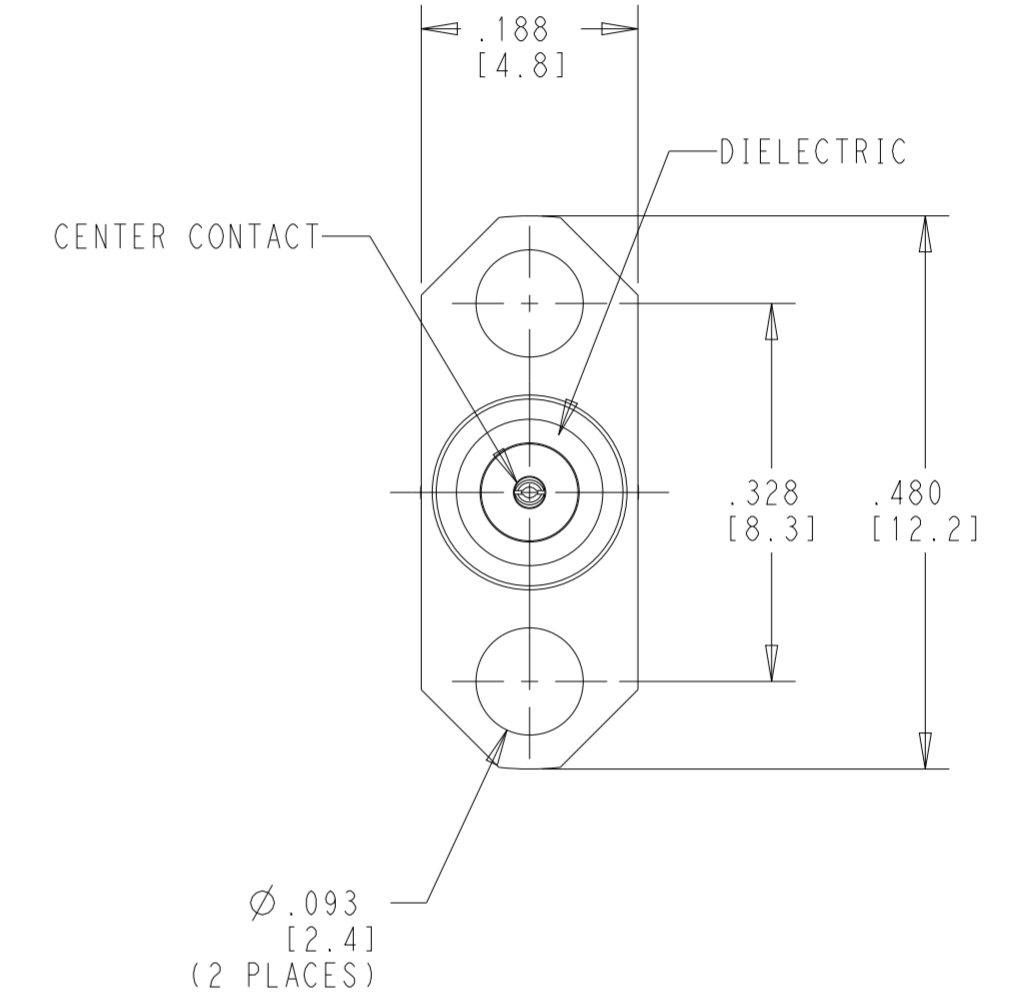


WARNING - THIS DOCUMENT CONTAINS TECHNOLOGY WHOSE EXPORT IS RESTRICTED BY THE EXPORT ADMINISTRATION REGULATIONS ("EAR") PURSUANT TO 15 C.F.R. PARTS 730-774. VIOLATIONS OF THE EAR ARE SUBJECT TO SEVERE CRIMINAL PENALTIES UNDER THE EXPORT CONTROL REFORM ACT, AS AMENDED (TITLE 50, U.S.C., SEC. 4801, ET SEQ.).

REVISIONS				
P	LTR	DESCRIPTION	DATE	APVD
D		REVISED PER ECN-23-235281	17OCT2023	LP PD



GLASS SEALED CONTACT ASSY
 A) BUSHING CONTACT EXT
 B) PREFORM
 (FOR 1045598-1 ONLY)
 SCALE 10:1



COMPONENT	MATERIAL	FINISH
HOUSING	STAINLESS STEEL PER ASTM-A484 AND ASTM-A582, TYPE 303	PASSIVATE PER QQ-P-35
DIELECTRIC	TFE FLUOROCARBON PER ASTM-D-1457	N/A
CENTER CONTACT	BERYLLIUM COPPER PER ASTM-196, ALLOY C17300, CONDITION H	GOLD PLATE PER MIL-G-45204
BUSHING CONTACT EXT	IRON-NICKEL-COBALT ALLOY PER MIL-I-23011 CLASS 1 (KOVAR)	GOLD PLATE PER MIL-GF-45204
EMI GASKET	CONDUCTIVE ELASTOMETERS PER MIL-G-83528	N/A
PREFORM	GLASS	N/A

WITHOUT GLASS SEALED CONTACT ASSY	1045598-2
W/GLASS SEALED CONTACT ASSY	1045598-1
DESCRIPTION	PART NO

THIS DRAWING IS A CONTROLLED DOCUMENT.

DWN	03JUL2023	TE Connectivity
CHK	03JUL2023	
APVD	17OCT2023	
CHK	JAB	
DIMENSIONS: INCHES TOLERANCES UNLESS OTHERWISE SPECIFIED: 0 PLC ± 1 PLC ± 2 PLC ± 3 PLC ±.005 4 PLC ± ANGLES ±1° FINISH		NAME: OSSM JACK, TWO HOLE FLANGE MOUNT FOR .012 DIA PIN PRODUCT SPEC: - APPLICATION SPEC: - WEIGHT: - SCALE: 6:1
MATERIAL	SEE TABLE	SIZE: A2 CAGE CODE: 00779 DRAWING NO: C-1045598 SHEET 1 OF 1 RESTRICTED TO: - REV D