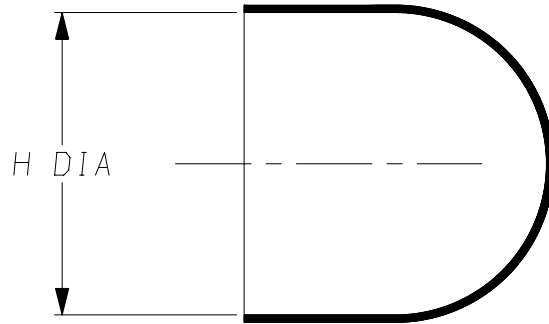
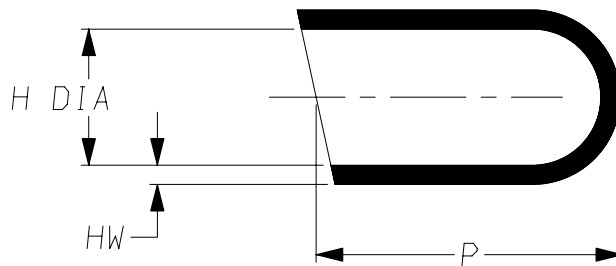


a) Part as supplied

101A0**-*-G02



b) Part after unrestricted recovery



DIMENSIONS in millimetres
(in inches, for reference)

Part Number	H		P	HW
	Min a	Max b	Min b	±20% b
101A031-**-G02	10 {0.39}	4.6 {0.18}	21 {0.83}	1.50 {0.06}
101A052-**-G02	20 {0.79}	9.4 {0.37}	18 {0.71}	2.00 {0.08}
101A062-**-G02	25 {0.98}	11.4 {0.45}	18 {0.71}	2.30 {0.09}
101A073-**-G02	39 {1.54}	18.0 {0.71}	50 {1.97}	2.54 {0.10}
101A083-**-G02	51 {2.01}	22.9 {0.90}	50 {1.97}	2.80 {0.11}

#

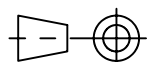
THIS IS A TRIMMED VARIANT
MODIFIED DIMENSIONS ARE SHOWN THUS: - #

Copyright (!)

The copyright in this drawing is the property of Tyco Electronics UK Ltd. The drawing is issued on the condition that it is not copied, reproduced or disclosed to a third party, either in whole or in part without the prior written consent of Tyco Electronics UK Ltd.

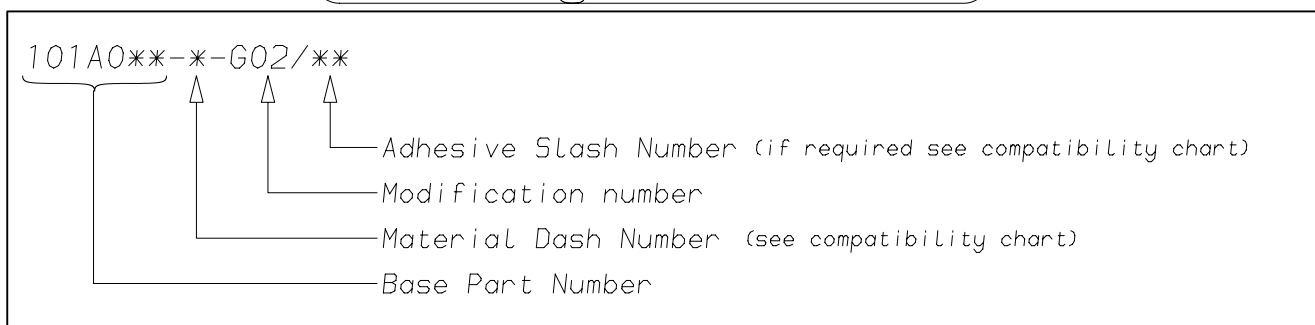
Drawn A.LILLEY. Checked Issue 4 Date October 2006 Conforms to ISO Recommendations
3rd Angle Projection
Not to Scale

Approval Design MKTG. Q.A.



Raychem		Specification	Part Number
		Control Drawing	101A0**-*-G02 Issue 4
Iss.	Date	E.C.R. No.	Details of Change
2	August 1980	2567	Pb was ±10%
3	March 2000	CR00-HM-0006	-100 added to compatibility chart & all SCD's amalgamated
4	October 2006	CR06-DM-104	-12 Material description name changed
4	October 2006	CR06-HM012	Imperial dimensions added

(Ordering Information)



(COMPATIBILITY CHART)

Material Dash Number	Material Description	SPEC Number	Coating Slash Number
-3	POLYOLEFIN, SEMI-RIGID	RT-301, RK-6703	/42, /86, /180
-4	POLYOLEFIN, FLEXIBLE	RT-1304 RT-1050	/42, /86, /180
-12	FLUOROELASTOMER, FLEXIBLE	RT-1312, RW-2071	/225
-25	ELASTOMER, FLUID RESISTANT	RT-1325, RK-6713	/42, /86, /225
-100	ZERO HALOGEN	RT-1323, RK-6717	/86, /180

NOTES

- ① As supplied dimensions are for uncoated parts, when coating is added entry diameters will reduce by 1.5mm Max.

Tyco Electronics UK Ltd. Faraday Road, Swindon, Wiltshire, SN3 5HH England Telephone: (01793) 528171 Fax: 572516	Tyco Electronics Corporation 300, Constitution Drive, Menlo Park, CA 94025 USA Telephone (650) 361-3860 Fax: (650) 361-5579
Cage Code K1010	Cage Code 06090