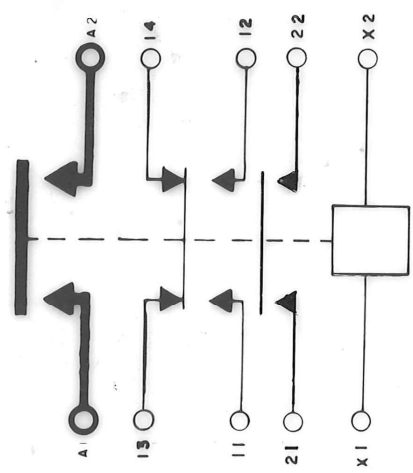
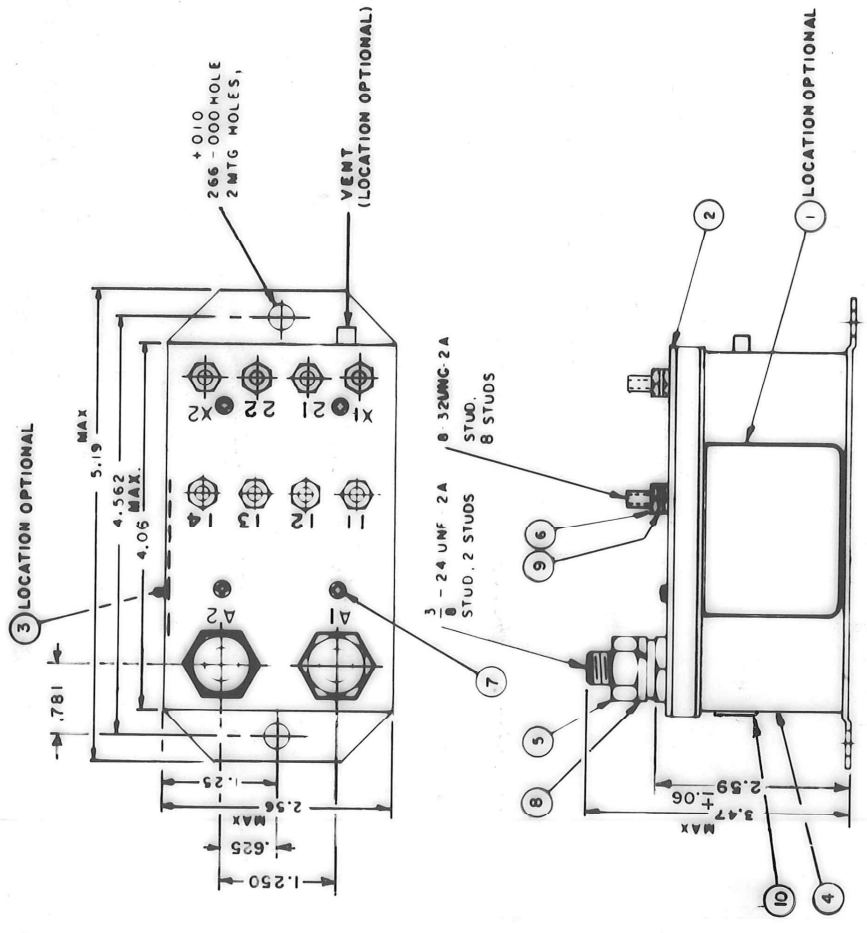


REV. C	REVISIONS	5-4-79
SYN	DESCRIPTION	DATE APPROVED
A	NOTE 3 ADDED & UPDATED PARTS LIST	5-9-79
B	16210 RE-IN-STATE	4-11-63
C	20881 ITEM TO ADDED	8-2-90



- NOTES:
1. THIS UNIT DESIGNED TO THE BASIC REQUIREMENTS OF MIL-R-6106E EXCEPT AS NOTED.
 2. QUALIFICATION TESTING NOT COMPLETED.
 3. MOUNTING SURFACE SHALL PROVIDE ELECTRICAL GROUND.

- CONSTRUCTION**
 MAIN CONTACTS CONFIGURATION VOLTAGE (NOMINAL) CURRENT:
 GASKET SEALED (VENTED)
 SPST N.O. 28 VDC
 400 AMP
 1000 AMP FOR 30 SEC
 1500 AMP INRUSH
- AUXILIARY CONTACTS**
 11-12-13-14
 21-22
 VOLTAGE RES
 CURRENT RESURGE
- COIL DATA**
 DUTY CYCLE
 NOMINAL VOLTAGE
 PICKUP MAX. INITIAL
 PULL THROUGH
 DROPOUT VOLTAGE
 RESISTANCE:
 ENVIRONMENTAL DATA
 AMBIENT TEMP
 LIFE ELECTRICAL
 LIFE MECHANICAL
 WEIGHT MAX. (EST.)
- FORM Z OPERATE BEFORE MAINS CLOSE**
 SPST - N.O.
 28 VDC
 5 AMP, 10 AMP CARRY ONLY
 30 AMP CARRY ONLY FOR 0.1 SEC.
- INTERMITTANT**
 24-30 VDC
 12 VDC
 6 VDC MAX AT 25°C
 .5-5 V
 14 OHM ± 20% AT 25°C
- 55°C TO +71°C**
 50,000 CYCLES MIN.
 100,000 CYCLES
 2 LBS. 2 OZ.

QTY REQD	NOMENCLATURE OR DESCRIPTION	PART OR IDENTIFYING NO	ITEM NO
1	PLATE - FAA/PMA	58400-081	10
8	WASHER LOCK - 8 X .307 X .047 SPL. BRZ.	51808-064 (AN935B8)	9
2	WASHER LOCK - 3/8 X .688 X .094 SPL. BRZ.	51807-084 (AN935B616)	8
4	SCREW - #4 X 1/4 S.S. SHEET METAL	51200-020	7
8	NUT - 8-32 X 5/16 X 3/32 HEX. BRASS	50408-034	6
2	NUT - 3/8 - 24 X 5/8 X 7/32 HEX. BRASS	50407-164 (AN341-616)	5
1	CONTACTOR ASSEMBLY - PRIMARY	33286-010	4
1	PLATE - WIRING DIAGRAM	35700-001	3
1	PLATE - BASE COVER	33266-006	2
1	PLATE - NAME	16043-001	1

PARTS LIST	
DATE 12-7-78	DR BY H.A.S.
DESIGNED FOR	DIV. OF A-T-O
TOLERANCES UNLESS OTHERWISE SPECIFIED	.00 ± .00
MATERIAL	
APPROVED	RS
APPROVED	DCS
CODE IDENT NO	74063
SIZE	C
SCALE	NONE
WEIGHT	
KSR	
400 AMP, 28 VOLTS	
A-703FB	
SHEET	