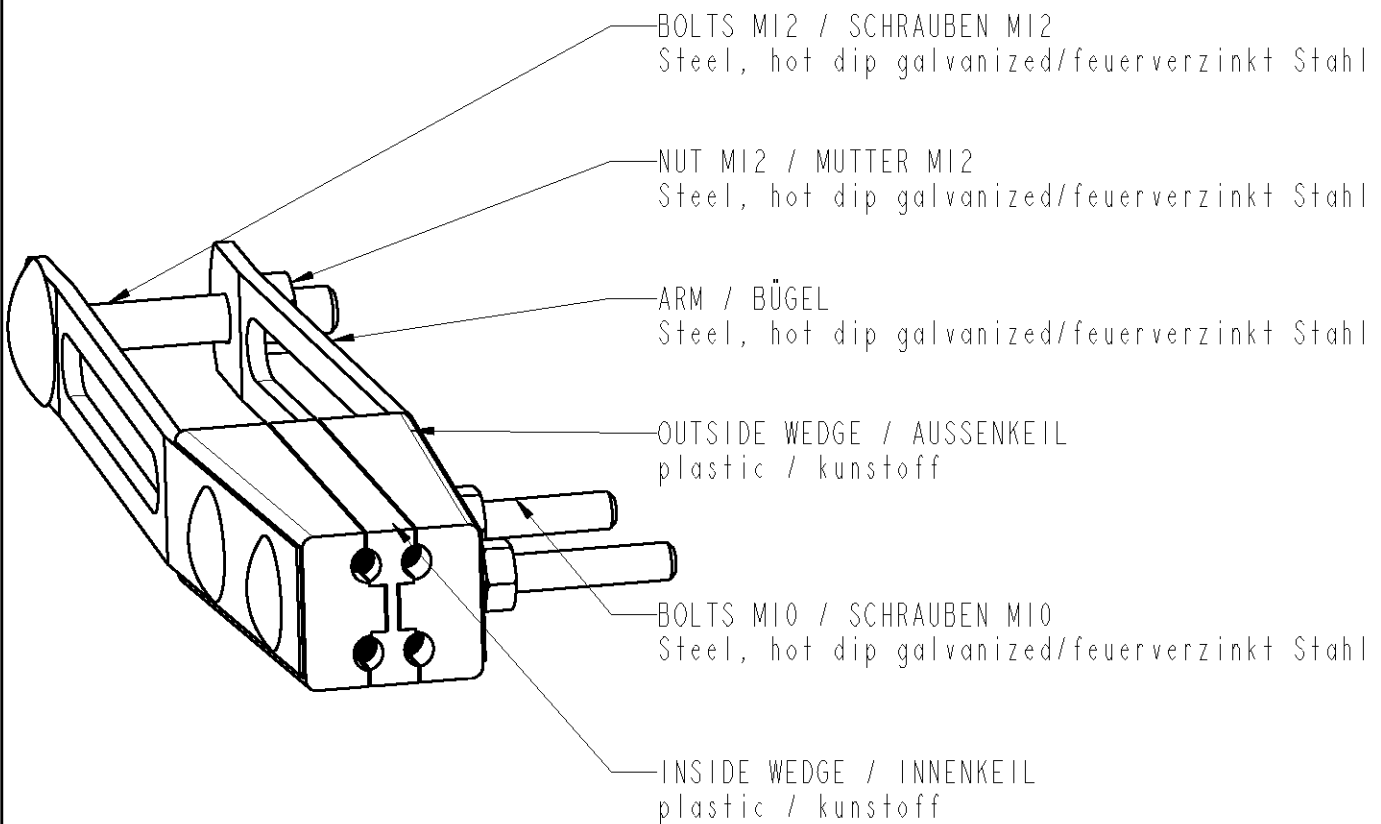
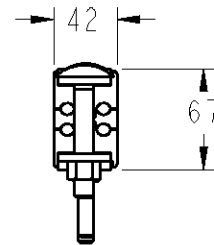
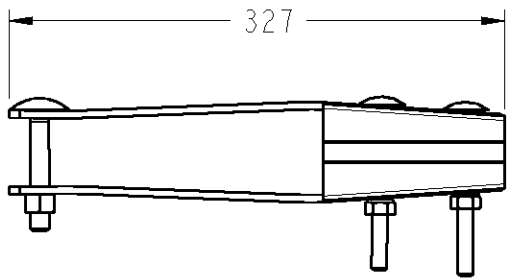


LOC	DIST	REVISIONS					
FH	2	P	LTR REV	DESCRIPTION MODIFICATIONS	DATE	DWN DESS.	APVD APP.
			I	CREATION	22MAR2007	FB	AG
	A	TORQUE UPDATE	08SEP2008	XG	AG		



Capacity / Klemmbereich : 4x25-50 mm<sup>2</sup>  
 Tightening torque/ Anzugsmoment : 45 N.m

TOLERANCES UNLESS OTHERWISE SPECIFIED	-
TOLERANCES NON SPECIFIEES	-
FINISH	-
FINITION	-

THIS DRAWING IS UNPUBLISHED. / DIFFUSION RESTREINTE  
 BY TYCO ELECTRONICS CORPORATION. ALL RIGHTS RESERVED. / TOUS DROITS RESERVES.  
 COPYRIGHT 20

DIMENSIONS:	mm
TOLERANCES UNLESS OTHERWISE SPECIFIED / TOLERANCES NON SPECIFIEES (SUIV. NB DE DECIMALES):	
0	PLC / DEC: ±0
1	PLC / DEC: ±0
2	PLC / DEC: ±0
3	PLC / DEC: ±0
4	PLC / DEC: ±0
ANGLES ±	

DWN/DESSINE F. BUARD	22MAR2007
CHK/VERIFIE G. NEDELLEC	-
APVD/APPROUVE A. GUICHARD	-
PRODUCT SPEC SPEC. PRODUIT	-
APPLICATION SPEC SPEC. APPLICATION	-
WEIGHT MASSE APPROX.	1215 g

MATERIAL MATIERE	-
<b>Tyco Electronics</b>	
SIMEL PRODUCTS	
NAME TITRE	HEL-5506
SIZE FORMAT	A4
CAGE CODE	-
DRAWING NO No PLAN	C=1-1199009-2

RESTRICTED TO RESERVE A	-
-------------------------	---

CUSTOMER DRAWING / PLAN CLIENT	UNIQUEMENT POUR REFERENCE	SCALE ECHELLE 1:5	SHEET FEUILLE 1	OF DE 1	REV A
--------------------------------	---------------------------	-------------------	-----------------	---------	-------