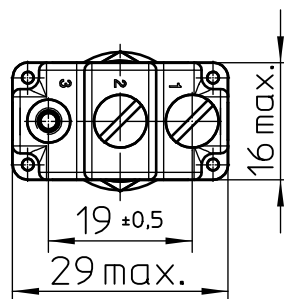
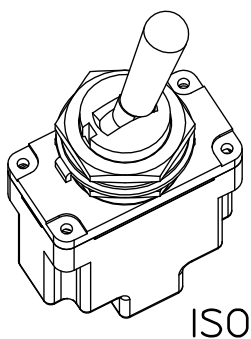
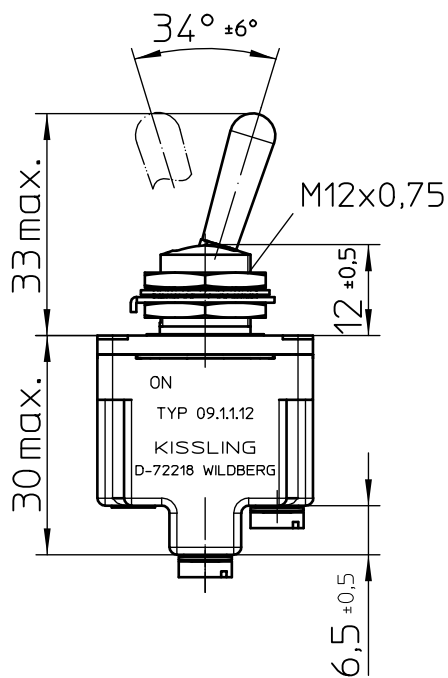
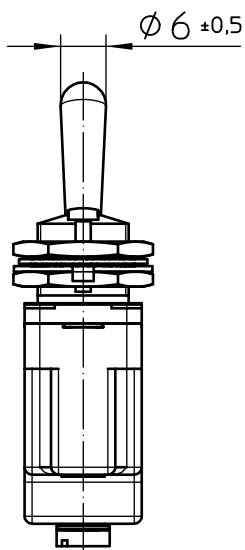


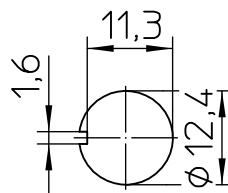
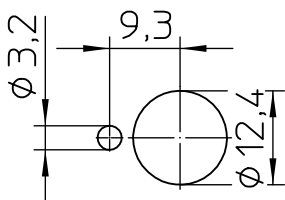
keyway                      opposite keyway



## Mounting Detail

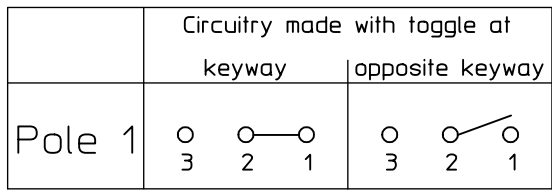
with locking ring

without locking ring



|       |            |       |                                       |       |  |             |
|-------|------------|-------|---------------------------------------|-------|--|-------------|
|       | Date       | Name  | mm                                    | Scale | <br>Elektrotechnik - GmbH & Co KG<br>D - 72218 Wildberg | Drawing No: |
| Drawn | 25.05.2005 | Braun | General Tolerances<br>DIN ISO 2768 mK | 1:1   |  | 09-1-1-12   |
| Check | 14.11.2005 | Braun |                                       |       |  | NSN.:       |

## Circuit Diagram



## Actuation

momentary keyway side  
locking opposite keyway side

## Construction

Material, Casing ..... Duroplast GF  
 Material, Cover ..... GD-ZnAl4Cu1  
 Connections ..... Screws M3,5x6 ISO 1580  
 Protection Interior ..... IP 6K7 DIN 40 050 Part 9  
     Connections ..... IP 00 DIN 40 050 Part 9

## Mechanical Data

Current carrying parts ..... CuZn-Alloy  
 Contacts ..... Ag  
 Ambient Temperature Range ..... -55°C to +85°C  
 Storage Temperature Range ..... -65°C to +85°C  
 Life Cycle iaw VG 95 210 Part 21, grade H ..... 100.000 operations

## Electrical Data

Voltage 28 V DC ohmic Load ..... 15A  
 28 V DC inductive Load ..... at L/R = 5 ms 10A  
 28 V DC lamp Load ..... 4A  
 115 V AC ohmic Load ..... 15A  
 115 V AC inductive Load ..... cos.  $\Phi$  = 0,75, 7A  
 115 V AC lamp Load ..... 2A  
 Motor Load ..... utilisation category AC3 (see DIN VDE 0660 Part 107) 5A

Min. Rating ..... 12 V DC, 20 mA

It is recommended to use gold-plated contacts  
for lower currents or voltages.

|       |            |       |                    |              |  |                              |
|-------|------------|-------|--------------------|--------------|--|------------------------------|
|       | Date       | Name  | mm<br>←→           | Scale<br>1:1 | <br>Elektrotechnik - GmbH & Co KG<br>D - 72218 Wildberg | Drawing No:<br><br>09-1-1-12 |
| Drawn | 25.05.2005 | Braun | General Tolerances |              |  |                              |
| Check | 25.05.2005 | Braun |                    |              |  | NSN.:                        |