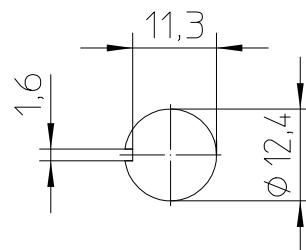
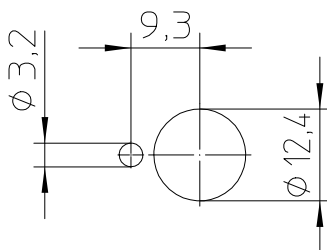
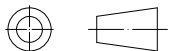



Mounting Detail
with locking ring without locking ring

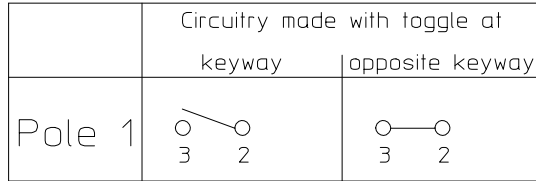


Third Angle Projection



	Date	Name	mm	Scale		Drawing No:
Drawn	07.12.2016	WalzA	↔	1:1		07-1-2-10
Check	07.12.2016	Weiro	General Tolerances DIN ISO 2768 cL			NSN:

Circuit Diagram.



Actuation

locking keyway side
locking opposite keyway side

Construction.

Material, Casing Thermoplast GF
 Material, Cover GD-ZnAl4Cu1
 Connections Faston DIN 46 244-A6,3-0,8
 Protection Interior IP 6K5 DIN 40 050 Part 9
 Connections IP 00 DIN 40 050 Part 9

Mechanical Data


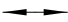
Current carrying parts CuZn-Alloy
 Contacts Ag
 Ambient Temperature Range -35°C to +60°C
 Storage Temperature Range -35°C to +80°C
 Life Cycle (nominal Load) 100.000 operations

Electrical Data

Voltage 12 V DC ohmic Load 20A
 28 V DC ohmic Load 20A
 28 V DC inductive Load at L/R = 5 ms 15A
 28 V DC lamp Load 7A
 115 V AC ohmic Load 15A
 115 V AC inductive Load cos. φ = 0,75, 15A
 115 V AC lamp Load 4A
 Motor Load utilisation category AC3 (see DIN VDE 0660 Part 107) 5A

Min. Rating 12 V DC, 20 mA

It is recommended to use gold-plated contacts
for lower currents or voltages.

	Date	Name	mm	Scale		Drawing No:
Drawn	07.12.2016	WalzA		1:1		07-1-2-10
Check	07.12.2016	Weiro	General Tolerances DIN ISO 2768 cL			NSN: