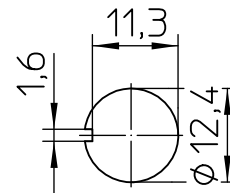
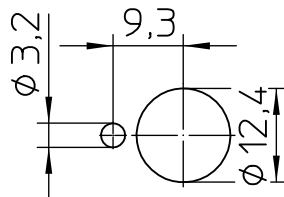


Mounting Detail

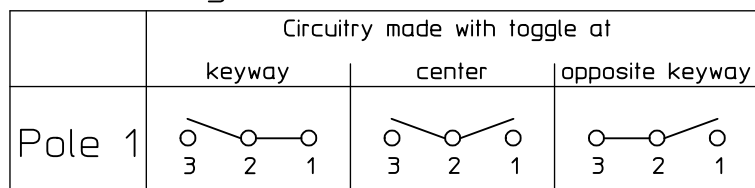
with locking ring

without locking ring



	Date	Name	mm	Scale	 Elektrotechnik - GmbH & Co KG D - 72218 Wildberg	Drawing No:
Drawn	05.12.2006	Walz	→	1:1		07-1-1-15 A
Check	06.12.2006	Walz	General Tolerances DIN ISO 2768 mK			NSN.:

Circuit Diagram



Actuation

locking keyway side
locking center position
locking opposite keyway side

Locking Configuration

locked in keyway side
locked in center position
locked in opposite keyway side

Construction

Material, Casing Thermoplast GF
Material, Cover GD-ZnAl4Cu1
Connections Screws M3,5x6 ISO 1580
Protection Interior IP 6K5 DIN 40 050 Part 9
Connections IP 00 DIN 40 050 Part 9

Mechanical Data

Current carrying parts CuZn-Alloy
Contacts Ag
Ambient Temperature Range -35°C to +60°C
Storage Temperature Range -35°C to +80°C
Life Cycle (nominal Load) 100.000 operations

Electrical Data

Voltage 12 V DC ohmic Load 20A
28 V DC ohmic Load 20A
28 V DC inductive Load at L/R = 5 ms 15A
28 V DC lamp Load 5A
115 V AC ohmic Load 15A
115 V AC inductive Load cos. φ = 0,75, 10A
115 V AC lamp Load 3A
Motor Load utilisation category AC3 (see DIN VDE 0660 Part 107) 5A

Min. Rating 12 V DC, 20 mA

It is recommended to use gold-plated contacts
for lower currents or voltages.

	Date	Name	mm ←→	Scale 1:1	 Elektrotechnik - GmbH & Co KG D - 72218 Wildberg	Drawing No: 07-1-1-15 A
Drawn	05.12.2006	Walz	General Tolerances DIN ISO 2768 mK			
Check	06.12.2006	Walz				