

File E66717
SR#5975412-T004

May 09, 1984

REPORT

On

COMPONENT - ELECTRICAL QUICK-CONNECT TERMINALS

TYCO ELECTRONICS CORP
HARRISBURG PA 17111

Copyright © 1984 Underwriters Laboratories Inc.

Underwriters Laboratories Inc. authorizes the above named company to reproduce this Report either in its entirety or the portion of this Report consisting of the Cover Page up to (but not including) the Construction Details Descriptive pages.

D E S C R I P T I O N

PRODUCT COVERED:

Component quick-connect connectors for Tabs, Faston Series 110, 187, 205, 250. (For specific part nos. see manufacturer's drawings.)

Component quick-connect tabs, Series .250, cat. nos. contained in manufacturer's drawings.

USR, CNR - FASTON Quick-Connect Connectors for copper alloy tabs, Series 250, Cat. No. 1217080-1.

GENERAL CHARACTER AND USE:

The products covered are quick-connect connectors intended for factory assembly on No. 22-10 AWG stranded copper wire using this manufacturer's power tooling. They are intended for use in equipment where strain relief is provided. The quick-connect connectors are for use on the following copper *alloy production tabs, assembled with the specified tooling.

<u>Wire Size (AWG)</u>	<u>Number of Strands</u>
No. 10	105
No. 12	65
No. 14	41
No. 16	26
No. 18	16
No. 20	10
No. 22	7

Part No. 160883 is similar to Part No. 160430, except without slots provided on the connector end. See Ill. 18 for details.

Series .250 tabs are copper alloy production tabs mounted by integrally formed pins. They are for use with size .250 quick-connect connectors. See Ills. 19-25 inclusive for details. Series 250 tabs are for factory-wiring.

ENGINEERING CONSIDERATIONS (NOT FOR UL REPRESENTATIVE USE):

These devices are for use in equipment where the acceptability of the combination is determined by Underwriters Laboratories Inc.

Conditions of Acceptability - The following items are to be judged with respect to specific applications in their end use.

1. These devices are not to be used for current interruption on grounding purposes.
2. These devices are for use where strain relief is provided as part of the equipment.
3. These devices are for internal wiring only in electrical equipment.
4. The mounting suitability of the Series .250 tabs shall be determined in the end-use equipment.
5. **The mounting suitability of the Cat. No. 1217080-1 shall be determined in the end-use equipment.**

CONSTRUCTION DETAILS:

The details of construction are illustrated in the following catalog pages and accompanying photographs.

Material - All quick-connect connectors covered by this report may be constructed with copper alloy, C260 or C274.

Marking - Each connector or tab is marked with the manufacturer's name or trademark. The smallest unit cartons or reels are marked with:

1. The manufacturer's name or trademark.
2. Part No. Note: Leading zeros of Part Nos. are optional.
3. Wire sizes (connectors only).
4. A statement indicating that the connectors are "for use with Cu wire" or equivalent, (connectors only).

PART NO. 0-160526-5

FIG. 1 (M84-4010)

General - The quick-connectors shown in Fig. 1 are representative of the connectors Recognized in this report. For specific catalog numbers, wire and tab sizes, refer to illustrations.

B.L.

J.P.

PART NO. 1217080-1**ILL. 35**

1. Connector Body - Tin plated brass. See ILL. 35 for dimensional details.

E 667 17

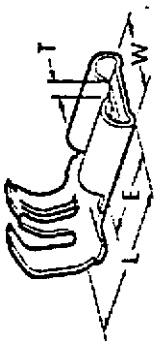
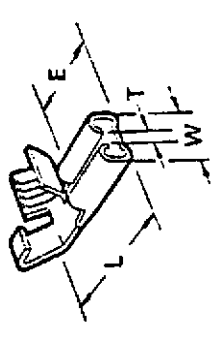

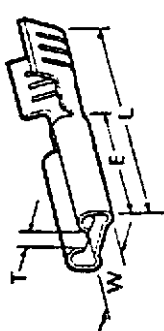

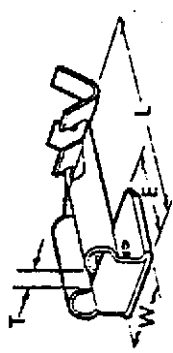
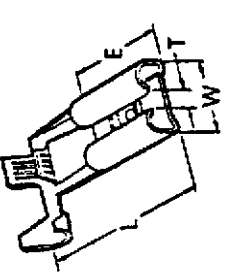


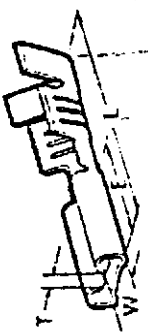
VOL. I
AND

SEC. I
REPORT

FIG. I



File	66717
Vol.	4
Sec.	1
and Report	
Ill.	1
Iss.	5-9-84

	5		10
	4		9
	3		8
	2		7
	1		6

File 66717 Vol.4 Sec.1
and Report

III. 2 Iss. 5-9-84

*** RECEPTACLE 110 SERIES FASTON ***									
DATE: 04/29/83	FIG. NO.	RANGE	WIRE	INSUL.	TAB	MATERIAL	FINISH	DIMENSIONS	REMARKS
STRIP	LOOSE PIECE				THK.	TYPE		W L E	US EQUIVALENT PART NUMBER
0-140716-1	6	0.2-0.35	1.0-1.5		0.50	0.25	BRASS	3.7 16.1 6.4	0.6 0.6 3&4
0-140716-2	6	0.2-0.35	1.0-1.5		0.50	0.25	BRASS	3.7 16.1 6.4	0.6 0.6 3&4
0-140716-3	6	0.2-0.35	1.0-1.5		0.40	0.25	BRASS	3.7 16.1 6.4	0.6 0.6 3&4
0-140716-4	6	0.2-0.35	1.0-1.5		0.40	0.25	BRASS	3.7 16.1 6.4	0.6 0.6 3&4
0-140717-1	6	0.3-0.8	1.5-2.5		0.80	0.25	BRASS	3.7 16.1 6.4	0.6 0.6 3
0-141286-1	6	0.3-0.8	1.5-2.5		0.80	0.25	BRASS	3.7 16.1 6.4	0.6 0.6 2
0-140717-2	6	0.3-0.8	1.5-2.5		0.80	0.25	BRASS	3.7 16.1 6.4	0.6 0.6 3
0-141286-2	6	0.3-0.8	1.5-2.5		0.80	0.25	BRASS	3.7 16.1 6.4	0.6 0.6 2
0-140717-3	6	0.3-0.8	1.5-2.5		0.80	0.25	BRASS	3.7 16.1 6.4	0.6 0.6 3
0-141286-3	6	0.3-0.8	1.5-2.5		0.80	0.25	BRASS	3.7 16.1 6.4	0.6 0.6 2
0-140717-4	6	0.3-0.8	1.5-2.5		0.80	0.25	BRASS	3.7 16.1 6.4	0.6 0.6 3
0-141286-4	6	0.3-0.8	1.5-2.5		0.80	0.25	BRASS	3.7 16.1 6.4	0.6 0.6 2
0-140718-1	6	0.3-0.8	1.5-2.5		0.80	0.25	BRASS	3.7 16.1 6.4	0.6 0.6 3
0-141286-5	6	0.3-0.8	1.5-2.5		0.80	0.25	BRASS	3.7 16.1 6.4	0.6 0.6 2
0-140718-2	6	0.3-0.8	1.5-2.5		0.80	0.25	BRASS	3.7 16.1 6.4	0.6 0.6 3
0-141286-6	6	0.3-0.8	1.5-2.5		0.80	0.25	BRASS	3.7 16.1 6.4	0.6 0.6 2
0-140718-3	6	0.3-0.8	1.5-2.5		0.80	0.25	BRASS	3.7 16.1 6.4	0.6 0.6 3
0-141286-7	6	0.3-0.8	1.5-2.5		0.80	0.25	BRASS	3.7 16.1 6.4	0.6 0.6 2
0-140718-4	6	0.3-0.8	1.5-2.5		0.80	0.25	BRASS	3.7 16.1 6.4	0.6 0.6 3
0-141286-8	6	0.3-0.8	1.5-2.5		0.80	0.25	BRASS	3.7 16.1 6.4	0.6 0.6 2
0-140718-5	6	0.3-0.8	1.5-2.5		0.80	0.25	BRASS	3.7 16.1 6.4	0.6 0.6 3
0-141286-9	6	0.3-0.8	1.5-2.5		0.80	0.25	BRASS	3.7 16.1 6.4	0.6 0.6 2
0-150500-1	6	0.2-0.6	2.0-3.0		0.50	0.25	BRASS	3.7 15.3 6.2	0.7 0.7 4
0-150500-2	6	0.2-0.6	2.0-3.0		0.50	0.25	BRASS	3.7 15.3 6.2	0.7 0.7 4
0-150500-3	6	0.2-0.6	2.0-3.0		0.50	0.25	BRASS	3.7 15.3 6.2	0.7 0.7 4
0-150500-4	6	0.2-0.6	2.0-3.0		0.50	0.25	BRASS	3.7 15.3 6.2	0.7 0.7 4
0-150500-5	6	0.2-0.6	2.0-3.0		0.50	0.25	BRASS	3.7 15.3 6.2	0.7 0.7 4
0-150500-6	6	0.2-0.6	2.0-3.0		0.50	0.25	BRASS	3.7 15.3 6.2	0.7 0.7 4
0-150500-7	6	0.2-0.6	2.0-3.0		0.50	0.25	BRASS	3.7 15.3 6.2	0.7 0.7 4
0-150501-1	6	0.2-0.6	2.0-3.0		0.50	0.25	BRASS	3.7 15.3 6.2	0.7 0.7 4
0-150501-2	6	0.2-0.6	2.0-3.0		0.50	0.25	BRASS	3.7 15.3 6.2	0.7 0.7 4
0-150545-1	6	0.2-0.6	2.0-3.0		0.80	0.25	BRASS	3.7 15.4 6.4	0.7 0.7 4
0-150545-2	6	0.2-0.6	2.0-3.0		0.80	0.25	BRASS	3.7 15.4 6.4	0.7 0.7 4
0-150545-3	6	0.2-0.6	2.0-3.0		0.80	0.25	BRASS	3.7 15.4 6.4	0.7 0.7 4
0-150545-4	6	0.2-0.6	2.0-3.0		0.80	0.25	BRASS	3.7 15.4 6.4	0.7 0.7 4
0-150545-5	6	0.2-0.6	2.0-3.0		0.80	0.25	BRASS	3.7 15.4 6.4	0.7 0.7 4
0-150545-6	6	0.2-0.6	2.0-3.0		0.80	0.25	BRASS	3.7 15.4 6.4	0.7 0.7 4
0-150545-7	6	0.2-0.6	2.0-3.0		0.80	0.25	BRASS	3.7 15.4 6.4	0.7 0.7 4
0-150545-8	6	0.2-0.6	2.0-3.0		0.80	0.25	BRASS	3.7 15.4 6.4	0.7 0.7 4
0-150577-1	6	0.2-0.6	2.0-3.0		0.23	0.25	BRASS	3.7 15.4 6.4	0.7 0.7 4

NOTE 1=LOOSE PIECE WIRE BARREL PRE CRIMPED
NOTE 2=LOOSE PIECE WIRE AND INSULATION BARREL PRE CRIMPED
NOTE 3=SPICE FREE REELED
NOTE 4=WITH CHAMFER AROUND FRONT OF RECEPTACLE

File 66717 Vol. 4 Sec. 1 and Report

Tr. 3 Iss. 5-9-84

- 2 -

*** RECEPTACLE 110 SERIES FASTON ***

DATE: 04/29/83

CATALOG NO. FIG. WIRE RANCE

NEAREST
US EQUIVALENT
PARTNUMBER UL

REMARKS
OR NOTES

CATALOG NO.	FIG.	WIRE	RANCE	INSUL.	TAB	MATERIAL THK. TYPE	FINISH	DIMENSIONS			NEAREST US EQUIVALENT PARTNUMBER UL	REMARKS OR NOTES
								W	L	E		
0-150577-2	0-150363-2	6	0.2-0.6	2.0-3.0	0.23	0.25 BRASS	TIN	3.7	15.4	6.4	0.7	0-042068-1 Y
0-150651-1	0-150725-1	6	0.2-0.6	2.0-3.0	0.30	0.25 BRASS	TIN	3.7	15.4	6.4	0.7	0-042068-0 Y
0-150651-2	0-150725-2	6	0.2-0.6	2.0-3.0	0.30	0.25 BRASS	TIN	3.7	15.4	6.4	0.7	0-042068-1 Y
0-151614-1		9	0.2-0.6		0.50	0.25 BRASS	PRETIN	3.5	7.7	3.6	0.7	0-062668-1 Y
0-151614-2		9	0.2-0.6		0.50	0.25 BRASS	PRETIN	3.5	7.7	3.6	0.7	0-042399-2 Y
0-151614-3		9	0.2-0.6		0.23	0.25 BRASS	PRETIN	3.5	7.7	3.6	0.7	0-062668-1 Y
0-151614-4		9	0.2-0.6		0.23	0.25 BRASS	PRETIN	3.5	7.7	3.6	0.7	0-042399-1 Y
0-151614-5		9	0.2-0.6		0.80	0.25 BRASS	PRETIN	3.5	7.7	3.6	0.7	0-060601-1 Y
0-151614-6		9	0.2-0.6		0.80	0.25 BRASS	PRETIN	3.5	7.7	3.6	0.7	0-062668-1 Y
0-151614-7		9	0.2-0.6		0.46	0.25 BRASS	PRETIN	3.5	7.7	3.6	0.7	0-042399-2 Y
0-151614-8		9	0.2-0.6		0.46	0.25 BRASS	PRETIN	3.5	7.7	3.6	0.7	0-062668-1 Y
0-151614-9		9	0.2-0.6		0.30	0.25 BRASS	PRETIN	3.5	7.7	3.6	0.7	0-062668-1 Y
1-151614-1		9	0.2-0.6		0.30	0.25 BRASS	PRETIN	3.5	7.7	3.6	0.7	0-042399-1 Y
1-151614-2		9	0.2-0.6		0.30	0.25 BRASS	PRETIN	3.5	7.7	3.6	0.7	0-062668-1 Y
1-151614-3		9	0.2-0.6		0.46	0.25 BRASS	PRETIN	3.5	7.7	3.6	0.7	0-062668-1 Y
1-151614-4		9	0.2-0.6		0.46	0.25 BRASS	PRETIN	3.5	7.7	3.6	0.7	0-042399-1 Y
1-151614-5		9	0.2-0.6		0.46	0.25 BRASS	PRETIN	3.5	7.7	3.6	0.7	0-062668-1 Y
1-151614-6		9	0.2-0.6		0.40	0.25 BRASS	PRETIN	3.5	7.7	3.6	0.7	0-042399-1 Y
1-151614-7		9	0.2-0.6		0.50	0.25 BRASS	SILVER	3.5	7.7	3.6	0.7	0-042399-1 Y
0-154663-1		9	0.2-0.6		0.30	0.25 BRASS	PRETIN	3.5	7.7	3.6	0.7	0-062668-1 Y
0-154663-2		9	0.2-0.6		0.50	0.25 BRASS	PRETIN	3.5	7.7	3.6	0.7	0-062668-1 Y
0-160196-1	0-160306-1	6	0.3-0.6	1.3-2.0	0.80	0.25 BRASS	TIN	3.7	14.0	6.3	0.7	4
0-160196-2	0-160306-2	6	0.3-0.6	1.3-2.0	0.80	0.25 BRASS	SILVER	3.7	14.0	6.3	0.7	4
0-160196-3	0-160306-3	6	0.3-0.6	1.3-2.0	0.80	0.25 BRASS	GOLD	3.7	14.0	6.3	0.7	4
0-160196-4	0-160306-4	6	0.3-0.6	1.3-2.0	0.80	0.25 BRASS	TIN	3.7	14.0	6.3	0.7	4
5-160196-1	5-160306-1	6	0.3-0.6	1.3-2.0	0.80	0.25 BRASS	TIN	3.7	14.0	6.3	0.7	4
5-160196-2	5-160306-2	6	0.3-0.6	1.3-2.0	0.80	0.25 BRASS	SILVER	3.7	14.0	6.3	0.7	4
5-160196-3	5-160306-3	6	0.3-0.6	1.3-2.0	0.80	0.25 BRASS	GOLD	3.7	14.0	6.3	0.7	4
5-160196-4	5-160306-4	6	0.3-0.6	1.3-2.0	0.80	0.25 BRASS	TIN	3.7	14.0	6.3	0.7	4
0-160303-1	0-160321-1	6	0.3-0.6	1.3-2.0	0.80	0.25 BRASS	TIN	3.7	14.0	6.3	0.8	N
0-160303-2	0-160321-2	6	0.3-0.6	1.3-2.0	0.80	0.25 BRASS	SILVER	3.7	14.0	6.3	0.8	
0-160303-3	0-160321-3	6	0.3-0.6	1.3-2.0	0.80	0.25 BRASS	GOLD	3.7	14.0	6.3	0.8	
0-160303-4	0-160321-4	6	0.3-0.6	1.3-2.0	0.80	0.25 BRASS	TIN	3.7	14.0	6.3	0.8	
0-160303-5	0-160321-5	6	0.3-0.6	1.3-2.0	0.80	0.25 BRASS	TIN	3.7	14.0	6.3	0.8	
0-160303-6	0-160321-6	6	0.3-0.6	1.3-2.0	0.80	0.25 BRASS	TIN	3.7	14.0	6.3	0.8	
0-160303-7	0-160321-7	6	0.3-0.6	1.3-2.0	0.80	0.25 BRASS	TIN	3.7	14.0	6.3	0.8	
0-160303-8	0-160321-8	6	0.3-0.6	1.3-2.0	0.80	0.25 BRASS	TIN	3.7	14.0	6.3	0.8	
0-160303-9	0-160321-9	6	0.3-0.6	1.3-2.0	0.80	0.25 BRASS	TIN	3.7	14.0	6.3	0.8	
1-160303-0	1-160321-0	6	0.3-0.6	1.3-2.0	0.80	0.25 BRASS	PRETIN	3.7	14.0	6.3	0.8	
5-160303-1	5-160321-1	6	0.3-0.6	1.3-2.0	0.80	0.25 BRASS	TIN	3.7	14.0	6.3	0.8	
5-160303-2	5-160321-2	6	0.3-0.6	1.3-2.0	0.80	0.25 BRASS	TIN	3.7	14.0	6.3	0.8	

NOTE 1=LOOSE PIECE WIRE BARREL PRE CRIMPED
NOTE 2=LOOSE PIECE WIRE AND INSULATION BARREL PRE CRIMPED
NOTE 3=SPLICE FREE REELED
NOTE 4=WITH CHAMFER AROUND FRONT OF RECEPTACLE

File 66717 Vol. 4 Sec. 1 and Report III. 4 Iss. 5-9-84

*** RECEPTACLE 110 SERIES FASTON ***

DATE: 04/29/83	FIG.	RANGE	TAB	MATERIAL	FINISH	DIMENSIONS	NEAREST	REMARKS
CATALOG NO.	LOOSE PIECE	WIRE	THK.	TYPE		W L E	PARTNUMBER	UL OR NOTES
5-160303-3	5-160321-3	6 0.3-0.6	0.80	0.25 BRASS	SILVER	3.7 14.0 6.3	0-062426-1	4
5-160303-4	5-160321-4	6 0.3-0.6	0.80	0.25 BRASS	GOLD	3.7 14.0 6.3	0-062426-1	4
5-160303-5	5-160321-5	6 0.3-0.6	0.80	0.25 BRASS	TIN	3.7 14.0 6.3	0-062426-1	4
5-160303-6	5-160321-6	6 0.3-0.6	0.80	0.25 BRASS	TIN	3.7 14.0 6.3	0-062426-1	3&4
5-160303-7	5-160321-7	6 0.3-0.6	0.80	0.25 BRASS	TIN	3.7 14.0 6.3	0-062426-1	3&4
5-160303-8	5-160321-8	6 0.3-0.6	0.80	0.25 BRASS	PRETIN	3.7 14.0 6.3	0-062426-1	4
5-160303-9	5-160321-9	6 0.3-0.6	0.80	0.25 BRASS	PRETIN	3.7 14.0 6.3	0-062426-1	4
5-160303-0	5-160321-0	6 0.3-0.6	0.80	0.25 BRASS	PRETIN	3.7 14.0 6.3	0-062426-1	4

0-160315-1	0-160322-1	6 0.3-0.6	0.40	0.25 BRASS	TIN	3.7 14.0 6.3	0-060118-1	0.8
0-160315-2	0-160322-2	6 0.3-0.6	0.40	0.25 BRASS	SILVER	3.7 14.0 6.3	0-060118-1	0.8
0-160315-3	0-160322-3	6 0.3-0.6	0.40	0.25 BRASS	SILVER	3.7 14.0 6.3	0-060118-1	0.8
5-160315-1	5-160322-1	6 0.3-0.6	0.40	0.25 BRASS	TIN	3.7 14.0 6.3	0-060118-1	4
5-160315-2	5-160322-2	6 0.3-0.6	0.40	0.25 BRASS	TIN	3.7 14.0 6.3	0-060118-1	4
5-160315-3	5-160322-3	6 0.3-0.6	0.40	0.25 BRASS	SILVER	3.7 14.0 6.3	0-060118-1	4
5-160315-4	5-160322-4	6 0.3-0.6	0.40	0.25 BRASS	SILVER	3.7 14.0 6.3	0-060118-1	3&4
5-160315-5	5-160322-5	6 0.3-0.6	0.40	0.25 BRASS	TIN	3.7 14.0 6.3	0-060118-1	3&4

0-160316-1	0-160323-1	6 0.3-0.6	0.50	0.25 BRASS	TIN	3.7 14.0 6.3	0-042068-0	Y
0-160316-2	0-160323-2	6 0.3-0.6	0.50	0.25 BRASS	SILVER	3.7 14.0 6.3	0-042068-1	Y
0-160316-3	0-160323-3	6 0.3-0.6	0.50	0.25 BRASS	GOLD	3.7 14.0 6.3	0-042068-5	Y
0-160316-4	0-160323-4	6 0.3-0.6	0.50	0.25 BRASS	TIN	3.7 14.0 6.3	0-042068-5	Y
0-160316-5	0-160323-5	6 0.3-0.6	0.50	0.25 BRASS	TIN	3.7 14.0 6.3	0-042068-4	Y
0-160316-6	0-160323-6	6 0.3-0.6	0.50	0.25 BRASS	GOLD	3.7 14.0 6.3	0-042068-4	Y
0-160316-7	0-160323-7	6 0.3-0.6	0.50	0.25 BRASS	TIN	3.7 14.0 6.3	0-042068-0	Y
0-160316-8	0-160323-8	6 0.3-0.6	0.50	0.25 BRASS	PRETIN	3.7 14.0 6.3	0-042068-1	Y
1-160316-9	0-160323-9	6 0.3-0.6	0.50	0.25 BRASS	PRETIN	3.7 14.0 6.3	0-042068-1	Y
5-160316-0	5-160323-0	6 0.3-0.6	0.50	0.25 BRASS	TIN	3.7 14.0 6.3	0-042068-0	Y
5-160316-1	5-160323-1	6 0.3-0.6	0.50	0.25 BRASS	TIN	3.7 14.0 6.3	0-042068-1	Y
5-160316-2	5-160323-2	6 0.3-0.6	0.50	0.25 BRASS	TIN	3.7 14.0 6.3	0-042068-1	Y
5-160316-3	5-160323-3	6 0.3-0.6	0.50	0.25 BRASS	SILVER	3.7 14.0 6.3	0-042068-5	Y
5-160316-4	5-160323-4	6 0.3-0.6	0.50	0.25 BRASS	GOLD	3.7 14.0 6.3	0-042068-5	Y
5-160316-5	5-160323-5	6 0.3-0.6	0.50	0.25 BRASS	TIN	3.7 14.0 6.3	0-042068-4	Y
5-160316-6	5-160323-6	6 0.3-0.6	0.50	0.25 BRASS	GOLD	3.7 14.0 6.3	0-042068-4	Y
5-160316-7	5-160323-7	6 0.3-0.6	0.50	0.25 BRASS	TIN	3.7 14.0 6.3	0-042068-0	Y
5-160316-8	5-160323-8	6 0.3-0.6	0.50	0.25 BRASS	GOLD	3.7 14.0 6.3	0-042068-1	Y
5-160316-9	5-160323-9	6 0.3-0.6	0.50	0.25 BRASS	TIN	3.7 14.0 6.3	0-042068-1	Y
6-160316-0	5-160323-0	6 0.3-0.6	0.50	0.25 BRASS	PRETIN	3.7 14.0 6.3	0-042068-1	Y

NOTE 1-LOOSE PIECE WIRE BARREL PRE CRIMPED
NOTE 2-LOOSE PIECE WIRE AND INSULATION BARREL PRE CRIMPED
NOTE 3-SPLICE FREE REELED
NOTE 4-WITH CHAMFER AROUND FRONT OF RECEPTACLE

File E66717 Vol. 4 Sec. 1
and Report

III. 5 Iss. 5-9-84

*** RECEPTACLE 110 SERIES FASTON ***										N E A R E S T	
DATE: 04/29/83										US EQUIVALENT	R E M A R K S
C A T A L O G N O .	FIG.	R A N G E	T A B	M A T E R I A L	D I M E N S I O N S	P A R T N U M B E R	U L	O R	N O T E S		
STRIP	LOOSE	PIECE	INSUL.	THK.	TYPE	FINISH	W	L	E		
0-160415-1	0-160468-1	6	0.5-1.0	2.0-3.1	0.40	0.25 BRASS	3.7	14.0	6.3	0.8	
0-160415-2	0-160468-2	6	0.5-1.0	2.0-3.1	0.40	0.25 BRASS	3.7	14.0	6.3	0.8	
0-160415-3	0-160468-3	6	0.5-1.0	2.0-3.1	0.40	0.25 BRASS	3.7	14.0	6.3	0.8	
0-160415-4	0-160468-4	6	0.5-1.0	2.0-3.1	0.40	0.25 BRASS	3.7	14.0	6.3	0.8	
0-160415-5	0-160468-5	6	0.5-1.0	2.0-3.1	0.40	0.25 BRASS	3.7	14.0	6.3	0.8	
0-160424-1	0-160624-1	6	0.5-1.0	2.0-3.1	0.30	0.25 BRASS	3.7	14.0	6.3	0.8	
0-160424-2	0-160624-2	6	0.5-1.0	2.0-3.1	0.30	0.25 BRASS	3.7	14.0	6.3	0.8	
0-160424-3	0-160624-3	6	0.5-1.0	2.0-3.1	0.30	0.25 BRASS	3.7	14.0	6.3	0.8	
0-160484-1	0-160539-1	6	0.5-1.0	2.0-3.1	0.50	0.25 BRASS	3.7	14.0	6.3	0.8	
0-160484-2	0-160539-2	6	0.5-1.0	2.0-3.1	0.50	0.25 BRASS	3.7	14.0	6.3	0.8	
0-160484-3	0-160539-3	6	0.5-1.0	2.0-3.1	0.50	0.25 BRASS	3.7	14.0	6.3	0.8	
0-160484-4	0-160539-4	6	0.5-1.0	2.0-3.1	0.50	0.25 BRASS	3.7	14.0	6.3	0.8	
0-160484-5	0-160539-5	6	0.5-1.0	2.0-3.1	0.50	0.25 BRASS	3.7	14.0	6.3	0.8	
0-160484-6	0-160539-6	6	0.5-1.0	2.0-3.1	0.50	0.25 BRASS	3.7	14.0	6.3	0.8	
0-160484-7	0-160539-7	6	0.5-1.0	2.0-3.1	0.50	0.25 BRASS	3.7	14.0	6.3	0.8	
0-160528-1	0-160528-1	6	0.5-1.1	2.0-3.6	0.50	0.25 BRASS	3.7	14.0	6.3	0.7	
0-160528-2	0-160528-2	6	0.5-1.1	2.0-3.6	0.50	0.25 BRASS	3.7	14.0	6.3	0.7	
0-160528-3	0-160528-3	6	0.5-1.1	2.0-3.6	0.50	0.25 BRASS	3.7	14.0	6.3	0.7	
0-160528-4	0-160528-4	6	0.5-1.1	2.0-3.6	0.50	0.25 BRASS	3.7	14.0	6.3	0.7	
0-160533-1	0-160625-1	6	0.5-1.0	2.0-3.1	0.50	0.25 BRASS	3.7	14.0	6.3	0.8	
0-160533-2	0-160625-2	6	0.5-1.0	2.0-3.1	0.50	0.25 BRASS	3.7	14.0	6.3	0.8	
0-160533-3	0-160625-3	6	0.5-1.0	2.0-3.1	0.50	0.25 BRASS	3.7	14.0	6.3	0.8	
0-160533-4	0-160625-4	6	0.5-1.0	2.0-3.1	0.50	0.25 BRASS	3.7	14.0	6.3	0.8	
0-160533-9	0-160625-9	6	0.5-1.0	2.0-3.1	0.50	0.25 BRASS	3.7	14.0	6.3	0.8	
0-160534-1	0-160626-1	6	0.5-1.0	2.0-3.1	0.80	0.25 BRASS	3.7	14.0	6.3	0.8	
0-160534-2	0-160626-2	6	0.5-1.0	2.0-3.1	0.80	0.25 BRASS	3.7	14.0	6.3	0.8	
0-160534-3	0-160626-3	6	0.5-1.0	2.0-3.1	0.80	0.25 BRASS	3.7	14.0	6.3	0.8	
0-160534-4	0-160626-4	6	0.5-1.0	2.0-3.1	0.80	0.25 BRASS	3.7	14.0	6.3	0.8	
0-160534-5	0-160626-5	6	0.5-1.0	2.0-3.1	0.80	0.25 BRASS	3.7	14.0	6.3	0.8	
0-160534-6	0-160626-6	6	0.5-1.0	2.0-3.1	0.80	0.25 BRASS	3.7	14.0	6.3	0.8	
0-160534-7	0-160626-7	6	0.5-1.0	2.0-3.1	0.80	0.25 BRASS	3.7	14.0	6.3	0.8	
0-160534-8	0-160626-8	6	0.5-1.0	2.0-3.1	0.80	0.25 BRASS	3.7	14.0	6.3	0.8	
0-160534-9	0-160626-9	6	0.5-1.0	2.0-3.1	0.80	0.25 BRASS	3.7	14.0	6.3	0.8	
0-160555-1	0-160556-1	6	0.5-1.0	2.0-3.1	0.80	0.25 BRASS	3.7	14.0	6.3	0.8	
0-160555-2	0-160556-2	6	0.5-1.0	2.0-3.1	0.80	0.25 BRASS	3.7	14.0	6.3	0.8	
0-160555-3	0-160556-3	6	0.5-1.0	2.0-3.1	0.80	0.25 BRASS	3.7	14.0	6.3	0.8	
0-160555-4	0-160556-4	6	0.5-1.0	2.0-3.1	0.80	0.25 BRASS	3.7	14.0	6.3	0.8	
0-160555-5	0-160556-5	6	0.5-1.0	2.0-3.1	0.80	0.25 BRASS	3.7	14.0	6.3	0.8	
0-160555-6	0-160556-6	6	0.5-1.0	2.0-3.1	0.80	0.25 BRASS	3.7	14.0	6.3	0.8	

NOTE 1=LOOSE PIECE WIRE BARREL PRE CRIMPED
NOTE 2=LOOSE PIECE WIRE AND INSULATION BARREL PRE CRIMPED
NOTE 3=SPLICE FREE REELED
NOTE 4=WITH CHAMFER AROUND FRONT OF RECEPTACLE

Med-67085

File E66717 Vol. 4 Sec. 1
and Report

Fig. 6 Iss. 5-9-84

- 5 -

*** RECEPTACLE 110 SERIES FASTON ***

DATE: 04/29/83	FIG. NO.	WIRE	RANGE	TAB	MATERIAL	THK.	FINISH	DIMENSIONS	US EQUIVALENT	REMARKS
CATALOG	LOOSE PIECE		INSUL.						PART NUMBER	OR NOTES
0-160555-7	0-160555-2	6 0.5-1.0	2.0-3.1	0.80	0.25 BRASS		TIN	3.7 14.0 6.3 0.8	0-062050-1	Y 3
0-160555-8	0-160555-4	6 0.5-1.0	2.0-3.1	0.80	0.25 BRONZE		PRETIN	3.7 14.0 6.3 0.8		3
0-160555-9		6 0.5-1.0	2.0-3.1	0.80	0.25 BRONZE		PRETIN	3.7 14.0 6.3 0.8	0-062426-1	Y 4
5-160555-1	5-160555-1	6 0.5-1.0	2.0-3.1	0.80	0.25 BRASS		TIN	3.7 14.0 6.3 0.8	0-062050-1	Y 4
5-160555-2	5-160555-3	6 0.5-1.0	2.0-3.1	0.80	0.25 BRASS		SILVER	3.7 14.0 6.3 0.8		4
5-160555-3		6 0.5-1.0	2.0-3.1	0.80	0.25 BRONZE		PRETIN	3.7 14.0 6.3 0.8	0-062050-1	Y 4
5-160555-4	5-160555-4	6 0.5-1.0	2.0-3.1	0.80	0.25 BRASS		PRETIN	3.7 14.0 6.3 0.8	0-062426-1	Y 384
5-160555-5		6 0.5-1.0	2.0-3.1	0.80	0.25 BRASS		TIN	3.7 14.0 6.3 0.8	0-062050-1	Y 384
5-160555-6	5-160555-6	6 0.5-1.0	2.0-3.1	0.80	0.25 BRASS		PRETIN	3.7 14.0 6.3 0.8		4
5-160555-7	5-160555-7	6 0.5-1.0	2.0-3.1	0.80	0.25 BRONZE		PRETIN	3.7 14.0 6.3 0.8		
5-160555-8	5-160555-8	6 0.5-1.0	2.0-3.1	0.80	0.25 BRONZE		PRETIN	3.7 14.0 6.3 0.8		
5-160555-9		6 0.5-1.0	2.0-3.1	0.80	0.25 BRONZE		PRETIN	3.7 14.0 6.3 0.8		
0-160597-1	0-160628-1	6 0.05-0.15	0.8-1.3	0.50	0.25 BRASS		TIN	3.7 14.0 6.3 0.7	0-062585-1	N
0-160597-2	0-160628-2	6 0.05-0.15	0.8-1.3	0.50	0.25 BRASS		SILVER	3.7 14.0 6.3 0.7		
0-160597-3	0-160628-3	6 0.05-0.15	0.8-1.3	0.50	0.25 BRASS		TIN	3.7 14.0 6.3 0.7	0-062585-1	N 3
0-160597-4	0-160628-4	6 0.05-0.15	0.8-1.3	0.50	0.25 BRASS		TIN	3.7 14.0 6.3 0.7		
0-160600-1	0-160601-1	6 0.05-0.15	0.8-1.3	0.40	0.25 BRASS		TIN	3.8 14.0 6.3 0.7	0-042847-1	N
0-160600-2	0-160601-2	6 0.05-0.15	0.8-1.3	0.40	0.25 BRASS		SILVER	3.8 14.0 6.3 0.7	0-062585-1	N
0-160600-3	0-160601-3	6 0.05-0.15	0.8-1.3	0.40	0.25 BRASS		TIN	3.8 14.0 6.3 0.7		
0-160615-1		6 0.1-0.35	1.0-2.0	0.80	0.25 BRASS		TIN	3.7 14.0 6.3 0.8	0-060230-1	N 4
0-160615-2		6 0.1-0.35	1.0-2.0	0.80	0.25 BRASS		TIN	3.7 14.0 6.3 0.8		4
5-160615-1		6 0.1-0.35	1.0-2.0	0.80	0.25 BRASS		TIN	3.7 14.0 6.3 0.8	0-060230-1	N 4
5-160615-2		6 0.1-0.35	1.0-2.0	0.80	0.25 BRASS		TIN	3.7 14.0 6.3 0.8		
0-160666-1		6 0.1-0.35	0.9-1.7	0.50	0.25 BRONZE		GOLD	3.7 11.7 4.0 0.7		
0-160666-2		6 0.1-0.35	0.9-1.7	0.50	0.25 BRONZE		TIN	3.7 11.7 4.0 0.7		
0-160666-3		6 0.1-0.35	0.9-1.7	0.50	0.25 BRONZE		TIN	3.7 11.7 4.0 0.7		
0-160666-4		6 0.1-0.35	0.9-1.7	0.50	0.25 BRASS		TIN	3.7 11.7 4.0 0.7		
0-160666-5		6 0.1-0.35	0.9-1.7	0.50	0.25 BRASS		TIN	3.7 11.7 4.0 0.7		
0-160718-1		6 0.5-1.0	2.0-3.6	0.50	0.25 BRASS		PRETIN	3.7 14.0 6.3 0.8	0-061400-1	Y
0-160718-2		6 0.5-1.0	2.0-3.6	0.50	0.25 BRASS		SILVER	3.7 14.0 6.3 0.8		
0-160718-3		6 0.5-1.0	2.0-3.6	0.50	0.25 BRASS		PRETIN	3.7 14.0 6.3 0.8	0-061400-1	Y 3
0-160718-4		6 0.5-1.0	2.0-3.6	0.50	0.25 BRASS		PRETIN	3.7 14.0 6.3 0.8		
0-160718-5		6 0.5-1.0	2.0-3.6	0.50	0.25 BRONZE		PRETIN	3.7 14.0 6.3 0.8		
0-160737-1		6 0.05-0.15	0.8-1.3	0.80	0.25 BRASS		TIN	3.8 14.0 6.3 0.8	0-062426-1	N
0-160737-2		6 0.05-0.15	0.8-1.3	0.80	0.25 BRASS		TIN	3.8 14.0 6.3 0.8		
0-160747-1	0-160768-1	7 0.1-0.2	0.8-1.3	0.50	0.25 BRASS		TIN	3.7 14.0 6.3 0.7		3
0-160747-2	0-160768-2	7 0.1-0.2	0.8-1.3	0.50	0.25 BRASS		TIN	3.7 14.0 6.3 0.7		

NOTE 1=LOOSE PIECE WIRE BARREL PRE CRIMPED
NOTE 2=LOOSE PIECE WIRE AND INSULATION BARREL PRE CRIMPED
NOTE 3=SPICE FREE REELED
NOTE 4=WITH CHAMFER AROUND FRONT OF RECEPTACLE

MOE 67636

File E66717 Vol. 4 Sec. 1

and Report

III. 7 Iss. 5-9-84

- 6 -

*** RECEPTACLE 110 SERIES FASTON ***

DATE: 04/29/83		CATALOG NO.		FIG.	RANGE		INSUL.	TAB	MATERIAL		DIMENSIONS		T	US EQUIVALENT		REMARKS
STRIP LOOSE PIECE					WIRE				THK.	FINISH	W	L		PARTNUMBER	UL	
0-160747-3	7	0.1-0.2	0.8-1.3	0.50	0.25	BRASS	TIN	3.7	14.0	6.3	0.7			0-060089-1	N	4
9-160747-1	7	0.1-0.2	0.8-1.3	0.50	0.25	BRASS	TIN	3.7	14.0	6.3	0.7			0-060089-2	N	4
9-160747-2	7	0.1-0.2	0.8-1.3	0.50	0.25	BRASS	TIN	3.7	14.0	6.3	0.7			0-060089-2	N	4
0-160765-1	6	0.1-0.35	1.0-2.0	0.50	0.25	BRASS	TIN	3.7	14.0	6.3	0.8			0-060089-1	N	4
0-160765-2	6	0.1-0.35	1.0-2.0	0.50	0.25	BRASS	TIN	3.7	14.0	6.3	0.8			0-060089-2	N	4
0-160765-3	6	0.1-0.35	1.0-2.0	0.50	0.25	BRASS	TIN	3.7	14.0	6.3	0.8			0-060089-2	N	3&4
0-160765-4	6	0.1-0.35	1.0-2.0	0.50	0.25	BRASS	TIN	3.7	14.0	6.3	0.8			0-060089-2	N	4
0-160765-5	6	0.1-0.35	1.0-2.0	0.50	0.25	BRASS	TIN	3.7	14.0	6.3	0.8			0-060089-2	N	3&4
0-160772-1	6	0.1-0.35	1.0-2.0	0.80	0.25	BRASS	TIN	3.7	14.0	6.3	0.8			0-060089-1	Y	4
0-160772-2	6	0.1-0.35	1.0-2.0	0.80	0.25	BRASS	TIN	3.7	14.0	6.3	0.8			0-060089-2	Y	4
0-160772-3	6	0.1-0.35	1.0-2.0	0.80	0.25	BRASS	TIN	3.7	14.0	6.3	0.8			0-060089-2	Y	3&4
0-160780-1	6	0.5-1.5	2.0-3.1	0.80	0.25	BRASS	TIN	3.7	14.0	6.3	0.7			0-062050-1	Y	3
0-160780-2	6	0.5-1.5	2.0-3.1	0.80	0.25	BRASS	TIN	3.7	14.0	6.3	0.7			0-062050-1	Y	3
0-160780-3	6	0.5-1.5	2.0-3.1	0.80	0.25	BRASS	TIN	3.7	14.0	6.3	0.7			0-062050-1	Y	3
0-160780-4	6	0.5-1.5	2.0-3.1	0.80	0.25	BRASS	TIN	3.7	14.0	6.3	0.7			0-062050-1	Y	3
0-160794-1	6	0.1-0.35	1.0-2.0	0.50	0.25	BRASS	TIN	3.7	14.0	6.3	0.8			0-060089-1	N	3&4
0-160794-2	6	0.1-0.35	1.0-2.0	0.50	0.25	BRASS	TIN	3.7	14.0	6.3	0.8			0-060089-2	N	3&4
0-160819-1	7	0.5-1.0	2.0-3.0	0.80	0.25	BRASS	TIN	3.7	14.0	6.3	0.8			0-062426-1	Y	3
0-160819-2	7	0.5-1.0	2.0-3.0	0.80	0.25	BRASS	TIN	3.7	14.0	6.3	0.8			0-062426-1	Y	3
0-160819-3	7	0.5-1.0	2.0-3.0	0.80	0.25	BRASS	TIN	3.7	14.0	6.3	0.8			0-062426-1	Y	3
0-160819-4	7	0.5-1.0	2.0-3.0	0.80	0.25	BRASS	TIN	3.7	14.0	6.3	0.8			0-062426-1	Y	3
0-160822-1	7	0.1-0.35	1.0-2.0	0.50	0.25	BRASS	TIN	3.7	14.0	6.3	0.8			0-060089-1	N	3&4
0-160822-2	7	0.1-0.35	1.0-2.0	0.50	0.25	BRASS	TIN	3.7	14.0	6.3	0.8			0-060089-1	N	3&4
0-160822-3	7	0.1-0.35	1.0-2.0	0.50	0.25	BRASS	TIN	3.7	14.0	6.3	0.8			0-060089-1	N	3&4
0-160822-4	7	0.1-0.35	1.0-2.0	0.50	0.25	BRASS	TIN	3.7	14.0	6.3	0.8			0-060089-1	N	3&4

NOTE 1-LOOSE PIECE WIRE BARREL PRE CRIMPED
NOTE 2-LOOSE PIECE WIRE AND INSULATION BARREL PRE CRIMPED
NOTE 3-SPLICE FREE REELED
NOTE 4-WITH CHAMFER AROUND FRONT OF RECEPTACLE

File E66717 Vol. 4 Sec.1 and Report

Ill. 8 Iss. 5-9-84

*** RECEPTACLE 187 SERIES FASTON ***

DATE: 04/29/83
C A T A L O G N O .
STRIP LOOSE PIECE

FIG. WIRE R A N C E
INSUL.

TAB H A T E R I A L
THK. TYPE FINISH

D I M E N S I O N S
W L E

N E A R E S T
US EQUIVALENT
PARTNUMBER UL

R E M A R K S
O R N O T E S

0-140934-2	4	0.5-1.4	2.8-4.3	0.50	0.32	STEEL	NICKEL	5.6	12.1	6.4	1.5		
0-150634-1	5	0.5-1.4	2.8-4.3	0.50	0.32	BRONZE		5.6	13.5	6.4	1.0	0-042486-1	Y 3
0-150634-2	5	0.5-1.4	2.8-4.3	0.50	0.32	BRONZE	TIN	5.6	13.5	6.4	1.0		3
0-150680-1	5	0.5-1.4	2.8-4.3	0.80	0.32	BRONZE		5.6	13.5	6.4	1.0	0-062591-1	Y 3
0-150680-2	5	0.5-1.4	2.8-4.3	0.80	0.32	BRONZE	TIN	5.6	13.5	6.4	1.0		3
0-150699-1	5	0.5-1.4	2.8-4.3	0.80	0.32	BRASS		5.6	13.5	6.4	1.0	0-062591-1	Y 3
0-150699-2	5	0.5-1.4	2.8-4.3	0.80	0.32	BRASS	TIN	5.6	13.5	6.4	1.0		3
0-160429-1	1	1.0-2.5	3.0-4.3	0.80	0.32	BRASS	TIN	5.6	15.0	6.4	1.1	0-061945-1	Y 3
0-160429-2	1	1.0-2.5	3.0-4.3	0.80	0.32	STEEL	NICKEL	5.6	15.0	6.4	1.1		3
0-160429-3	1	1.0-2.5	3.0-4.3	0.80	0.32	BRONZE		5.6	15.0	6.4	1.1		3
0-160429-4	1	1.0-2.5	3.0-4.3	0.80	0.32	BRONZE	TIN	5.6	15.0	6.4	1.1		3
0-160429-5	1	1.0-2.5	3.0-4.3	0.80	0.32	STEEL		5.6	15.0	6.4	1.1		3
0-160429-6	1	1.0-2.5	3.0-4.3	0.80	0.32	BRONZE	TIN	5.6	15.0	6.4	1.1		3
0-160429-7	1	1.0-2.5	3.0-4.3	0.80	0.32	STEEL	SILVER	5.6	15.0	6.4	1.1		3
0-160429-8	1	1.0-2.5	3.0-4.3	0.80	0.32	BRASS	PRETIN	5.6	15.0	6.4	1.1		4
0-160429-9	1	1.0-2.5	3.0-4.3	0.80	0.32	BRASS	TIN	5.6	15.0	6.4	1.1	0-061945-1	Y 3
0-160429-10	1	1.0-2.5	3.0-4.3	0.80	0.32	STEEL	NICKEL	5.6	15.0	6.4	1.1		4
0-160429-11	1	1.0-2.5	3.0-4.3	0.80	0.32	BRONZE		5.6	15.0	6.4	1.1		4
0-160429-12	1	1.0-2.5	3.0-4.3	0.80	0.32	BRONZE	TIN	5.6	15.0	6.4	1.1		4
0-160429-13	1	1.0-2.5	3.0-4.3	0.80	0.32	STEEL		5.6	15.0	6.4	1.1		4
0-160429-14	1	1.0-2.5	3.0-4.3	0.80	0.32	BRONZE	TIN	5.6	15.0	6.4	1.1		4
0-160429-15	1	1.0-2.5	3.0-4.3	0.80	0.32	BRASS	SILVER	5.6	15.0	6.4	1.1		4
0-160429-16	1	1.0-2.5	3.0-4.3	0.80	0.32	BRONZE	PRETIN	5.6	15.0	6.4	1.1		4
0-160430-1	1	0.5-1.5	2.3-3.3	0.80	0.32	BRASS	TIN	5.6	15.0	6.4	1.1	0-061758-1	Y
0-160430-2	1	0.5-1.5	2.3-3.3	0.80	0.32	BRASS	NICKEL	5.6	15.0	6.4	1.1		3
0-160430-3	1	0.5-1.5	2.3-3.3	0.80	0.32	BRONZE		5.6	15.0	6.4	1.1		3
0-160430-4	1	0.5-1.5	2.3-3.3	0.80	0.32	BRONZE	TIN	5.6	15.0	6.4	1.1		3
0-160430-5	1	0.5-1.5	2.3-3.3	0.80	0.32	STEEL		5.6	15.0	6.4	1.1		3
0-160430-6	1	0.5-1.5	2.3-3.3	0.80	0.32	BRONZE	TIN	5.6	15.0	6.4	1.1		3
0-160430-7	1	0.5-1.5	2.3-3.3	0.80	0.32	BRASS		5.6	15.0	6.4	1.1		3
0-160430-8	1	0.5-1.5	2.3-3.3	0.80	0.32	BRASS	TIN	5.6	15.0	6.4	1.1	0-061758-1	Y
0-160430-9	1	0.5-1.5	2.3-3.3	0.80	0.32	STEEL		5.6	15.0	6.4	1.1		3
0-160430-10	1	0.5-1.5	2.3-3.3	0.80	0.32	BRONZE	NICKEL	5.6	15.0	6.4	1.1		3
0-160430-11	1	0.5-1.5	2.3-3.3	0.80	0.32	BRONZE	TIN	5.6	15.0	6.4	1.1		3
0-160430-12	1	0.5-1.5	2.3-3.3	0.80	0.32	BRASS		5.6	15.0	6.4	1.1		3
0-160430-13	1	0.5-1.5	2.3-3.3	0.80	0.32	BRASS	TIN	5.6	15.0	6.4	1.1		3
0-160430-14	1	0.5-1.5	2.3-3.3	0.80	0.32	STEEL		5.6	15.0	6.4	1.1		3
0-160430-15	1	0.5-1.5	2.3-3.3	0.80	0.32	BRASS	GOLD	5.6	15.0	6.4	1.1		3
0-160430-16	1	0.5-1.5	2.3-3.3	0.80	0.32	BRASS		5.6	15.0	6.4	1.1	0-061758-1	Y 3
0-160430-17	1	0.5-1.5	2.3-3.3	0.80	0.32	BRASS	SILVER	5.6	15.0	6.4	1.1		4
0-160430-18	1	0.5-1.5	2.3-3.3	0.80	0.32	BRONZE	SILVER	5.6	15.0	6.4	1.1		4
0-160430-19	1	0.5-1.5	2.3-3.3	0.80	0.32	BRASS		5.6	15.0	6.4	1.1	0-061758-1	Y 4

NOTE 1-LOOSE PIECE WIRE BARREL PRE CRIMPED
NOTE 2-LOOSE PIECE WIRE AND INSULATION BARREL PRE CRIMPED
NOTE 3-SPLICE FREE REELED
NOTE 4-WITH CHAMFER AROUND FRONT OF RECEPTACLE

M0067088

File **E66717** Vol. **4** Sec. **1**
and Report

III. **10** Iss. **5-9-84**

- 3 -

*** RECEPTACLE 187 SERIES FASTON ***

DATE: 04/29/83
C A T A L O G N O .
STRIP LOOSE PIECE

FIG. WIRE R A N G E
INSUL.

TAB M A T E R I A L
THK. TYPE FINISH

D I M E N S I O N S
W L E

N E A R E S T
US EQUIVALENT
PARTNUMBER UL

R E M A R K S
O R N O T E S

6-160433-1	1	0.5-1.5	2.3-3.3	0.50	0.40	BRASS	TIN	5.6	15.0	6.4	1.1	0-042452-2	Y	3&4
6-160433-2	1	0.5-1.5	2.3-3.3	0.50	0.40	STEEL	NICKEL	5.6	15.0	6.4	1.1			3&4
0-160713-1	1	0.5-1.5	2.3-3.3	0.40	0.32	BRASS		5.6	15.0	6.4	1.0	0-042617-1	Y	
0-160713-2	1	0.5-1.5	2.3-3.3	0.40	0.32	BRASS	TIN	5.6	15.0	6.4	1.0	0-042617-1	Y	4
5-160713-1	1	0.5-1.5	2.3-3.3	0.40	0.32	BRASS		5.6	15.0	6.4	1.0	0-042617-2	Y	4
5-160713-2	1	0.5-1.5	2.3-3.3	0.40	0.32	BRASS	TIN	5.6	15.0	6.4	1.0	0-042617-2	Y	
0-160726-1	1	0.5-1.5	2.3-3.3	0.80	0.32	BRASS		5.6	15.0	6.4	1.1	0-060196-1	Y	
0-160726-2	1	0.5-1.5	2.3-3.3	0.80	0.32	BRASS	TIN	5.6	15.0	6.4	1.1	0-060196-2	Y	
0-160726-3	1	0.5-1.5	2.3-3.3	0.80	0.32	BRASS		5.6	15.0	6.4	1.1	0-060196-1	Y	
0-160726-4	1	0.5-1.5	2.3-3.3	0.80	0.32	BRASS	TIN	5.6	15.0	6.4	1.1	0-060196-2	Y	4
5-160726-1	1	0.5-1.5	2.3-3.3	0.80	0.32	BRASS		5.6	15.0	6.4	1.1	0-060196-1	Y	4
5-160726-2	1	0.5-1.5	2.3-3.3	0.80	0.32	BRASS	TIN	5.6	15.0	6.4	1.1	0-060196-2	Y	4
5-160726-3	1	0.5-1.5	2.3-3.3	0.80	0.32	BRASS		5.6	15.0	6.4	1.1	0-060196-1	Y	4
5-160726-4	1	0.5-1.5	2.3-3.3	0.80	0.32	BRASS	TIN	5.6	15.0	6.4	1.1	0-060196-2	Y	4
0-160778-1	1	0.2-0.6	2.3-3.3	0.50	0.32	BRASS		5.6	15.0	6.4	1.1			
0-160778-2	1	0.2-0.6	2.3-3.3	0.50	0.32	BRASS	TIN	5.6	15.0	6.4	1.1			3
0-160778-3	1	0.2-0.6	2.3-3.3	0.50	0.32	BRASS		5.6	15.0	6.4	1.1			3
0-160778-4	1	0.2-0.6	2.3-3.3	0.50	0.32	BRASS	TIN	5.6	15.0	6.4	1.1			
0-160782-1	1	0.5-1.5	2.3-3.3	1.00	0.32	STEEL	NICKEL	5.6	15.0	6.4	1.1			
0-160782-2	1	0.5-1.5	2.3-3.3	1.00	0.32	STEEL	NICKEL	5.6	15.0	6.4	1.1			3
0-160782-3	1	0.5-1.5	2.3-3.3	1.00	0.32	STEEL		5.6	15.0	6.4	1.1			4
0-160782-4	1	0.5-1.5	2.3-3.3	1.00	0.32	BRONZE		5.6	15.0	6.4	1.1			3&4
0-160782-5	1	0.5-1.5	2.3-3.3	1.00	0.32	BRONZE	TIN	5.6	15.0	6.4	1.1			

NOTE 1-LOOSE PIECE WIRE BARREL PRE CRIMPED
NOTE 2-LOOSE PIECE WIRE AND INSULATION BARREL PRE CRIMPED
NOTE 3-SPLICE FREE REELED
NOTE 4-WITH CHAMFER AROUND FRONT OF RECEPTACLE

100-80-55

FileE66717

Vol. 4

Sec. 1

and Report

III. 11

Iss. 5-9-84

*** RECEPTACLE 250 SERIES FASTON ***

DATE: 04/29/83	FIG.	RANGE	TAD	MATERIAL	DIMENSIONS	NEAREST	REMARKS
CATALOG NO.	WIRE	INSUL.	THK.	FINISH	W L E	US EQUIVALENT	OR NOTES
STRIP LOOSE PIECE						PARTNUMBER UL	
0-041449-0	1	2.1-5.3	3.8-5.1	0.80 0.45	BRASS	7.6 19.7 7.7 1.7	0-041449-0 Y 2
0-041449-1	1	2.1-5.3	3.8-5.1	0.80 0.45	BRASS	7.6 19.7 7.7 1.7	0-041449-1 N 2&4
0-041449-2	1	2.1-5.3	3.8-5.1	0.80 0.45	BRASS	7.6 19.7 7.7 1.7	0-041449-2 N 4
0-041449-3	1	2.1-5.3	3.8-5.1	0.80 0.45	BRONZE	7.6 19.7 7.7 1.7	0-041449-3 N 4
0-041450-0	1	2.1-5.3	3.8-5.1	0.80 0.45	BRASS	7.6 19.7 7.7 1.7	0-041450-0 Y 2
0-041450-1	1	2.1-5.3	3.8-5.1	0.80 0.45	BRASS	7.6 19.7 7.7 1.7	0-041450-1 N 2&4
0-041450-2	1	2.1-5.3	3.8-5.1	0.80 0.45	BRONZE	7.6 19.7 7.7 1.7	0-041450-2 Y 4
0-041531-0	5	0.8-3.4	2.8-5.3	0.80 0.45	BRASS	7.6 17.0 7.7 1.7	0-041531-0 Y 3
0-041532-0	5	0.8-3.4	2.8-5.3	0.80 0.45	BRASS	7.6 17.0 7.7 1.7	0-041532-0 Y
0-041679-0	1	2.1-5.3	3.8-5.1	0.80 0.45	BRASS	7.6 19.7 7.8 1.7	0-041679-0 Y 2
0-041679-2	1	2.1-5.3	3.8-5.1	0.80 0.45	BRASS	7.6 19.7 7.8 1.7	0-041679-2 N 2&4
0-041771-0	1	0.3-0.8	2.3-3.3	0.80 0.41	BRASS	7.6 19.2 7.7 2.3	0-041771-0 Y 1
0-041771-1	1	0.3-0.8	2.3-3.3	0.80 0.41	BRASS	7.6 19.2 7.7 2.3	0-041771-1 N 1&4
0-041772-0	1	0.3-0.8	2.3-3.3	0.80 0.41	BRASS	7.6 19.2 7.7 2.3	0-041772-0 Y 1
0-041772-1	1	0.3-0.8	2.3-3.3	0.80 0.41	BRASS	7.6 19.2 7.7 2.3	0-041772-1 N 1&4
0-041799-0	5	0.8-3.4	2.8-5.3	0.80 0.45	BRONZE	8.1 17.0 7.7 3.1	0-041799-0 Y 3
0-041800-0	5	0.8-3.4	2.8-5.3	0.80 0.45	BRONZE	8.1 17.0 7.7 3.1	0-041800-0 Y 2&3
0-041801-0	5	0.8-3.4	2.8-5.3	0.80 0.45	BRASS	8.1 17.0 7.7 3.1	0-041801-0 Y 2&3
0-041802-0	5	0.8-3.4	2.8-5.3	0.80 0.45	BRASS	8.1 17.0 7.7 3.1	0-041802-0 Y 2&3

NOTE 1=LOOSE PIECE WIRE BARREL PRE CRIMPED
NOTE 2=LOOSE PIECE WIRE AND INSULATION BARREL PRE CRIMPED
NOTE 3=SPLICE FREE REELED
NOTE 4=WITH CHAMFER AROUND FRONT OF RECEPTACLE

File E66717 Vol.4 Sec.1 and Report

III. 12 Iss. 5-9-84

2 -

*** RECEIPTABLE 250 SERIES FASTON ***

DATE: 04/29/83	FIG. N.O.	RANGE	WIRE	INSUL.	TAB	MATERIAL	THK.	TYPE	FINISH	W	L	E	T	US EQUIVALENT	REMARKS
CATALOG	LOOSE PIECE													PARTNUMBER	UL OR NOTES
0-042041-0	0-042232-4	5	0.8-3.4	2.8-5.3	0.80	0.45	BRONZE	SILVER	8.1	17.0	7.7	3.1	0-042041-0	Y	213
0-042144-1		5	0.8-3.4	2.8-5.3	0.80	0.45	BRASS	SILVER	7.6	17.0	7.7	1.7	0-042144-1	Y	3
0-042219-1	0-042468-1 0-042892-1 0-060705-1	1	0.8-2.1	3.1-4.3	0.80	0.41	STEEL	NICKEL	7.5	19.2	7.7	1.7	0-042219-1	N	124 4 284
0-042286-1	0-042370-1 0-060130-2 0-060130-3	1	0.3-0.8	2.3-3.3	0.80	0.41	BRASS	SILVER	7.6	19.2	7.8	2.3	0-042286-1	Y	1 2
0-042286-3		1	0.3-0.8	2.3-3.3	0.80	0.41	BRONZE	SILVER	7.6	19.2	7.8	2.3	0-042286-3	Y	2
0-042404-1	0-060453-1	5	0.8-3.4	2.8-5.3	0.80	0.41	STEEL	NICKEL	7.6	17.0	7.7	1.7			
0-042402-1		5	0.8-3.4	2.8-5.3	0.80	0.45	BRASS	TIN	7.6	17.0	7.7	1.7	0-042402-1	Y	3
0-042402-2		5	0.8-3.4	2.8-5.3	0.80	0.45	BRASS	TIN	7.6	17.0	7.7	1.7	0-042402-2	Y	3
0-042563-1	0-060583-2 0-060583-4 0-062583-3	5	3.1-4.9	2.8-5.3	0.80	0.45	BRASS	TIN	8.1	17.0	7.7	3.1	0-042563-1	Y	2
0-042563-2		5	3.1-4.9	2.8-5.3	0.80	0.45	BRASS	TIN	8.1	17.0	7.7	3.1	0-042563-2	Y	2
0-042563-3		5	3.1-4.9	2.8-5.3	0.80	0.45	BRASS	SILVER	8.1	17.0	7.7	3.1	0-042563-3	Y	2
0-042563-4		5	3.1-4.9	2.8-5.3	0.80	0.45	BRONZE	TIN	8.1	17.0	7.7	3.1	0-042563-4	Y	2
0-042563-5		5	3.1-4.9	2.8-5.3	0.80	0.45	BRONZE	TIN	8.1	17.0	7.7	3.1	0-042563-5	Y	2
0-042563-7		5	3.1-4.9	2.8-5.3	0.80	0.45	BRONZE	SILVER	8.1	17.0	7.7	3.1	0-042563-7	Y	2
0-140760-1	0-140794-1 0-140794-2 0-140794-3 0-140760-4	1	0.3-0.8	2.3-3.3	0.80	0.41	BRONZE	TIN	7.6	19.2	7.7	2.3	0-041771-0	Y	124
0-140760-2		1	0.3-0.8	2.3-3.3	0.80	0.41	BRONZE	TIN	7.6	19.2	7.7	2.3	0-041772-0	Y	124
0-140760-3		1	0.3-0.8	2.3-3.3	0.80	0.41	BRONZE	SILVER	7.6	19.2	7.7	2.3	0-042286-1	Y	124
0-140760-4		1	0.3-0.8	2.3-3.3	0.80	0.41	BRONZE	SILVER	7.6	19.2	7.7	2.3	0-041771-0	Y	4
0-151371-1		8	0.8-2.1	3.0-4.3	0.80	0.41	BRASS	TIN	7.6	14.7	7.6	2.3	0-061944-1	Y	
0-151371-2		8	0.8-2.1	3.0-4.3	0.80	0.41	BRASS	TIN	7.6	14.7	7.6	2.3	0-061944-2	Y	
0-160256-1	0-160304-1 0-160385-1 0-160304-2 0-160385-2	1	1.0-2.5	3.0-4.3	0.80	0.45	BRASS	TIN	7.6	19.2	7.7	1.7	0-041202-0	Y	2
0-160256-2		1	1.0-2.5	3.0-4.3	0.80	0.45	BRASS	TIN	7.6	19.2	7.7	1.7	0-041274-0	Y	2
0-160256-3	0-160304-3 0-160385-3 0-160385-5	1	1.0-2.5	3.0-4.3	0.80	0.45	BRASS	SILVER	7.6	19.2	7.7	1.7	0-041678-0	Y	2
0-160256-5	0-160304-5 0-160385-5	1	1.0-2.5	3.0-4.3	0.80	0.41	STEEL	NICKEL	7.6	19.2	7.7	1.7	0-042219-1	N	2
0-160256-6	0-160304-6	1	1.0-2.5	3.0-4.3	0.80	0.41	STEEL	TIN	7.6	19.2	7.7	1.7			2

NOTE 1-LOOSE PIECE WIRE BARREL PRE CRIMPED
NOTE 2-LOOSE PIECE WIRE AND INSULATION BARREL PRE CRIMPED
NOTE 3-SPLICE FREE REELED
NOTE 4-WITH CLIMPER AROUND FRONT OF RECEIPTABLE

File E66717 Vol. 4 Sec. 1
and Report

III. 13 Iss. 5-9-84

*** RECEPTACLE 250 SERIES FASTON ***

DATE: 04/29/83	FIG. C A T A L O G N O .	LOOSE PIECE	R A N G E WIRE	INSUL.	TAB	M A T E R I A L THK. TYPE	F I N I S H	D I M E N S I O N S W L E	N E A R E S T US EQUIVALENT PARTNUMBER UL	R E M A R K S O R N O T E S
0-160256-7	0-160304-7	1	1-0-2.5	3-0-4.3	0.80	0.45 BRONZE	TIN	7.6 19.2	0-041773-0	N 2
0-160256-8	0-160304-8	1	1-0-2.5	3-0-4.3	0.80	0.45 BRONZE	SILVER	7.6 19.2	0-041699-1	Y 2
0-160256-9	0-160304-9	1	1-0-2.5	3-0-4.3	0.80	0.45 BRONZE	NICKEL	7.6 19.2	0-041678-1	Y 2
1-160256-1	1-160304-1	1	1-0-2.5	3-0-4.3	0.80	0.45 BRONZE	NICKEL	7.6 19.2	0-042219-1	N
1-160256-3	1-160304-3	1	1-0-2.5	3-0-4.3	0.80	0.41 STEEL	COLD	7.6 19.2	0-042219-1	N
1-160256-4	1-160304-4	1	1-0-2.5	3-0-4.3	0.80	0.45 BRASS	NICKEL	7.6 19.2	0-042219-1	N 283
1-160256-6	1-160304-6	1	1-0-2.5	3-0-4.3	0.80	0.41 STEEL	NICKEL	7.6 19.2	0-041202-0	Y 283
1-160256-7	1-160304-7	1	1-0-2.5	3-0-4.3	0.80	0.45 BRASS	TIN	7.6 19.2	0-041274-0	Y 283
1-160256-8	1-160304-8	1	1-0-2.5	3-0-4.3	0.80	0.45 BRASS	SILVER	7.6 19.2	0-041678-0	Y 284
1-160256-9	1-160304-9	1	1-0-2.5	3-0-4.3	0.80	0.45 BRASS	NICKEL	7.6 19.2	0-041202-0	Y 284
2-160256-1	2-160304-1	1	1-0-2.5	3-0-4.3	0.80	0.45 BRASS	TIN	7.6 19.2	0-041274-1	Y 28384
2-160256-2	2-160304-2	1	1-0-2.5	3-0-4.3	0.80	0.45 BRASS	NICKEL	7.6 19.2	0-042219-1	N 2
2-160256-3	2-160304-3	1	1-0-2.5	3-0-4.3	0.80	0.41 STEEL	NICKEL	7.6 19.2	0-041699-1	Y 283
2-160256-4	2-160304-4	1	1-0-2.5	3-0-4.3	0.80	0.45 BRONZE	SILVER	7.6 19.2	0-042219-1	N 283
2-160256-5	2-160304-5	1	1-0-2.5	3-0-4.3	0.80	0.41 STEEL	NICKEL	7.6 19.2	0-041678-0	Y 284
2-160256-6	2-160304-6	1	1-0-2.5	3-0-4.3	0.80	0.45 BRASS	SILVER	7.6 19.2	0-041678-0	Y 284
2-160256-7	2-160304-7	1	1-0-2.5	3-0-4.3	0.80	0.45 BRASS	NICKEL	7.6 19.2	0-041678-0	Y 284
2-160256-8	2-160304-8	1	1-0-2.5	3-0-4.3	0.80	0.45 BRASS	TIN	7.6 19.2	0-041699-1	Y 284
2-160256-9	2-160304-9	1	1-0-2.5	3-0-4.3	0.80	0.45 BRASS	NICKEL	7.6 19.2	0-041274-0	Y 2
3-160256-1	3-160304-1	1	1-0-2.5	3-0-4.3	0.80	0.45 BRASS	TIN	7.6 19.2	0-041202-0	Y 28384
3-160256-2	3-160304-2	1	1-0-2.5	3-0-4.3	0.80	0.45 BRASS	NICKEL	7.6 19.2	0-041699-1	Y 28384
3-160256-3	3-160304-3	1	1-0-2.5	3-0-4.3	0.80	0.45 BRONZE	SILVER	7.6 19.2	0-041678-1	Y 28384
3-160256-4	3-160304-4	1	1-0-2.5	3-0-4.3	0.80	0.45 BRONZE	NICKEL	7.6 19.2	0-041678-0	Y 28384
3-160256-5	3-160304-5	1	1-0-2.5	3-0-4.3	0.80	0.45 BRASS	TIN	7.6 19.2	0-042219-1	N 283
3-160256-6	3-160304-6	1	1-0-2.5	3-0-4.3	0.80	0.41 STEEL	NICKEL	7.6 19.2	0-042219-1	N 283
3-160256-7	3-160304-7	1	1-0-2.5	3-0-4.3	0.80	0.45 BRASS	TIN	7.6 19.2	0-041773-0	N 284
3-160256-8	3-160304-8	1	1-0-2.5	3-0-4.3	0.80	0.45 BRASS	NICKEL	7.6 19.2	0-041678-1	Y 28384
3-160256-9	3-160304-9	1	1-0-2.5	3-0-4.3	0.80	0.45 BRASS	SILVER	7.6 19.2	0-041678-0	Y 28384
4-160256-1	4-160304-1	1	1-0-2.5	3-0-4.3	0.80	0.45 BRASS	TIN	7.6 19.2	0-041678-0	Y 283
4-160256-2	4-160304-2	1	1-0-2.5	3-0-4.3	0.80	0.45 BRASS	NICKEL	7.6 19.2	0-042219-1	N 283
4-160256-3	4-160304-3	1	1-0-2.5	3-0-4.3	0.80	0.45 BRASS	TIN	7.6 19.2	0-041773-0	N 284
4-160256-4	4-160304-4	1	1-0-2.5	3-0-4.3	0.80	0.45 BRASS	NICKEL	7.6 19.2	0-041202-0	Y 284
4-160256-5	4-160304-5	1	1-0-2.5	3-0-4.3	0.80	0.45 BRASS	TIN	7.6 19.2	0-041274-0	Y 4
4-160256-6	4-160304-6	1	1-0-2.5	3-0-4.3	0.80	0.45 BRASS	NICKEL	7.6 19.2	0-041699-1	Y 284
4-160256-7	4-160304-7	1	1-0-2.5	3-0-4.3	0.80	0.45 BRASS	SILVER	7.6 19.2	0-041678-1	Y 284
4-160256-8	4-160304-8	1	1-0-2.5	3-0-4.3	0.80	0.45 BRASS	NICKEL	7.6 19.2	0-041678-0	Y 284
4-160256-9	4-160304-9	1	1-0-2.5	3-0-4.3	0.80	0.45 BRASS	TIN	7.6 19.2	0-041699-1	Y 284
5-160256-1	5-160304-1	1	1-0-2.5	3-0-4.3	0.80	0.45 BRASS	NICKEL	7.6 19.2	0-041202-0	Y 284
5-160256-2	5-160304-2	1	1-0-2.5	3-0-4.3	0.80	0.45 BRASS	TIN	7.6 19.2	0-041274-0	Y 284
5-160256-3	5-160304-3	1	1-0-2.5	3-0-4.3	0.80	0.45 BRASS	NICKEL	7.6 19.2	0-041699-1	Y 284
5-160256-4	5-160304-4	1	1-0-2.5	3-0-4.3	0.80	0.45 BRASS	TIN	7.6 19.2	0-041678-1	Y 284
5-160256-5	5-160304-5	1	1-0-2.5	3-0-4.3	0.80	0.45 BRASS	NICKEL	7.6 19.2	0-041678-0	Y 284
5-160256-6	5-160304-6	1	1-0-2.5	3-0-4.3	0.80	0.45 BRASS	TIN	7.6 19.2	0-041699-1	Y 284
5-160256-7	5-160304-7	1	1-0-2.5	3-0-4.3	0.80	0.45 BRASS	NICKEL	7.6 19.2	0-041202-0	Y 284
5-160256-8	5-160304-8	1	1-0-2.5	3-0-4.3	0.80	0.45 BRASS	TIN	7.6 19.2	0-041274-0	Y 284
5-160256-9	5-160304-9	1	1-0-2.5	3-0-4.3	0.80	0.45 BRASS	NICKEL	7.6 19.2	0-041699-1	Y 284
6-160256-1	6-160304-1	1	1-0-2.5	3-0-4.3	0.80	0.45 BRASS	TIN	7.6 19.2	0-041678-1	Y 284
6-160256-2	6-160304-2	1	1-0-2.5	3-0-4.3	0.80	0.45 BRASS	NICKEL	7.6 19.2	0-041678-0	Y 284
6-160256-3	6-160304-3	1	1-0-2.5	3-0-4.3	0.80	0.45 BRASS	TIN	7.6 19.2	0-041699-1	Y 284
6-160256-4	6-160304-4	1	1-0-2.5	3-0-4.3	0.80	0.45 BRASS	NICKEL	7.6 19.2	0-041202-0	Y 284
6-160256-5	6-160304-5	1	1-0-2.5	3-0-4.3	0.80	0.45 BRASS	TIN	7.6 19.2	0-041274-0	Y 284
6-160256-6	6-160304-6	1	1-0-2.5	3-0-4.3	0.80	0.45 BRASS	NICKEL	7.6 19.2	0-041699-1	Y 284
6-160256-7	6-160304-7	1	1-0-2.5	3-0-4.3	0.80	0.45 BRASS	TIN	7.6 19.2	0-041678-1	Y 284
6-160256-8	6-160304-8	1	1-0-2.5	3-0-4.3	0.80	0.45 BRASS	NICKEL	7.6 19.2	0-041678-0	Y 284
6-160256-9	6-160304-9	1	1-0-2.5	3-0-4.3	0.80	0.45 BRASS	TIN	7.6 19.2	0-041699-1	Y 284
7-160256-1	7-160304-1	1	1-0-2.5	3-0-4.3	0.80	0.45 BRASS	NICKEL	7.6 19.2	0-041202-0	Y 284
7-160256-2	7-160304-2	1	1-0-2.5	3-0-4.3	0.80	0.45 BRASS	TIN	7.6 19.2	0-041274-0	Y 284
7-160256-3	7-160304-3	1	1-0-2.5	3-0-4.3	0.80	0.45 BRASS	NICKEL	7.6 19.2	0-041699-1	Y 284
7-160256-4	7-160304-4	1	1-0-2.5	3-0-4.3	0.80	0.45 BRASS	TIN	7.6 19.2	0-041678-1	Y 284
7-160256-5	7-160304-5	1	1-0-2.5	3-0-4.3	0.80	0.45 BRASS	NICKEL	7.6 19.2	0-041678-0	Y 284
7-160256-6	7-160304-6	1	1-0-2.5	3-0-4.3	0.80	0.45 BRASS	TIN	7.6 19.2	0-041699-1	Y 284
7-160256-7	7-160304-7	1	1-0-2.5	3-0-4.3	0.80	0.45 BRASS	NICKEL	7.6 19.2	0-041202-0	Y 284
7-160256-8	7-160304-8	1	1-0-2.5	3-0-4.3	0.80	0.45 BRASS	TIN	7.6 19.2	0-041274-0	Y 284
7-160256-9	7-160304-9	1	1-0-2.5	3-0-4.3	0.80	0.45 BRASS	NICKEL	7.6 19.2	0-041699-1	Y 284
8-160256-1	8-160304-1	1	1-0-2.5	3-0-4.3	0.80	0.45 BRASS	TIN	7.6 19.2	0-041678-1	Y 284
8-160256-2	8-160304-2	1	1-0-2.5	3-0-4.3	0.80	0.45 BRASS	NICKEL	7.6 19.2	0-041678-0	Y 284
8-160256-3	8-160304-3	1	1-0-2.5	3-0-4.3	0.80	0.45 BRASS	TIN	7.6 19.2	0-041699-1	Y 284
8-160256-4	8-160304-4	1	1-0-2.5	3-0-4.3	0.80	0.45 BRASS	NICKEL	7.6 19.2	0-041202-0	Y 284
8-160256-5	8-160304-5	1	1-0-2.5	3-0-4.3	0.80	0.45 BRASS	TIN	7.6 19.2	0-041274-0	Y 284
8-160256-6	8-160304-6	1	1-0-2.5	3-0-4.3	0.80	0.45 BRASS	NICKEL	7.6 19.2	0-041699-1	Y 284
8-160256-7	8-160304-7	1	1-0-2.5	3-0-4.3	0.80	0.45 BRASS	TIN	7.6 19.2	0-041678-1	Y 284
8-160256-8	8-160304-8	1	1-0-2.5	3-0-4.3	0.80	0.45 BRASS	NICKEL	7.6 19.2	0-041678-0	Y 284
8-160256-9	8-160304-9	1	1-0-2.5	3-0-4.3	0.80	0.45 BRASS	TIN	7.6 19.2	0-041699-1	Y 284
9-160256-1	9-160304-1	1	1-0-2.5	3-0-4.3	0.80	0.45 BRASS	NICKEL	7.6 19.2	0-041202-0	Y 284
9-160256-2	9-160304-2	1	1-0-2.5	3-0-4.3	0.80	0.45 BRASS	TIN	7.6 19.2	0-041274-0	Y 284
9-160256-3	9-160304-3	1	1-0-2.5	3-0-4.3	0.80	0.45 BRASS	NICKEL	7.6 19.2	0-041699-1	Y 284
9-160256-4	9-160304-4	1	1-0-2.5	3-0-4.3	0.80	0.45 BRASS	TIN	7.6 19.2	0-041678-1	Y 284
9-160256-5	9-160304-5	1	1-0-2.5	3-0-4.3	0.80	0.45 BRASS	NICKEL	7.6 19.2	0-041678-0	Y 284
9-160256-6	9-160304-6	1	1-0-2.5	3-0-4.3	0.80	0.45 BRASS	TIN	7.6 19.2	0-041699-1	Y 284
9-160256-7	9-160304-7	1	1-0-2.5	3-0-4.3	0.80	0.45 BRASS	NICKEL	7.6 19.2	0-041202-0	Y 284
9-160256-8	9-160304-8	1	1-0-2.5	3-0-4.3	0.80	0.45 BRASS	TIN	7.6 19.2	0-041274-0	Y 284
9-160256-9	9-160304-9	1	1-0-2.5	3-0-4.3	0.80	0.45 BRASS	NICKEL	7.6 19.2	0-041699-1	Y 284
10-160256-1	10-160304-1	1	1-0-2.5	3-0-4.3	0.80	0.45 BRASS	TIN	7.6 19.2	0-041678-1	Y 284
10-160256-2	10-160304-2	1	1-0-2.5	3-0-4.3	0.80	0.45 BRASS	NICKEL	7.6 19.2	0-041678-0	Y 284
10-160256-3	10-160304-3	1	1-0-2.5	3-0-4.3	0.80	0.45 BRASS	TIN	7.6 19.2	0-041699-1	Y 284
10-160256-4	10-160304-4	1	1-0-2.5	3-0-4.3	0.80	0.45 BRASS	NICKEL	7.6 19.2	0-041202-0	Y 284
10-160256-5	10-160304-5	1	1-0-2.5	3-0-4.3	0.80	0.45 BRASS	TIN	7.6 19.2	0-041274-0	Y 284
10-160256-6	10-160304-6	1	1-0-2.5	3-0-4.3	0.80	0.45 BRASS	NICKEL	7.6 19.2	0-041699-1	Y 284
10-160256-7	10-160304-7	1	1-0-2.5	3-0-4.3	0.80	0.45 BRASS	TIN	7.6 19.2	0-041678-1	Y 284
10-160256-8	10-160304-8	1	1-0-2.5	3-0-4.3	0.80	0.45 BRASS	NICKEL	7.6 19.2	0-041678-0	Y 284
10-160256-9	10-160304-9	1	1-0-2.5	3-0-4.3	0.80	0.45 BRASS	TIN	7.6 19.2	0-041699-1	Y 284
11-160256-1	11-160304-1	1	1-0-2.5	3-0-4.3	0.80	0.45 BRASS	NICKEL	7.6 19.2	0-041202-0	Y 284
11-160256-2	11-160304-2	1	1-0-2.5	3-0-4.3	0.80	0.45 BRASS	TIN	7.6 19.2	0-041274-0	Y 284
11-160256-3	11-									

HL 14 Iss. 5-9-84

REMARKS

1-160301-2	0-160305-1	1	4.0-6.0	3.8-5.1	0.80	0.45	BRASS	7.6	19.7	7.7	1.7	0-041449-0	Y	283
1-160301-3	1-160305-3	1	4.0-6.0	3.8-5.1	0.80	0.45	BRASS	7.6	19.7	7.7	1.7	0-041449-0	Y	284
1-160301-4	1-160305-4	1	4.0-6.0	3.8-5.1	0.80	0.45	BRONZE	7.6	19.7	7.7	1.7	0-041450-0	Y	284
1-160301-5	1-160305-5	1	4.0-6.0	3.8-5.1	0.80	0.45	BRASS	7.6	19.7	7.7	1.7	0-041450-0	Y	283&4
1-160301-6	1-160305-6	1	4.0-6.0	3.8-5.1	0.80	0.45	BRASS	7.6	19.7	7.7	1.7	0-041679-0	Y	284
1-160301-7	1-160305-7	1	4.0-6.0	3.8-5.1	0.80	0.45	BRASS	7.6	19.7	7.7	1.7	0-041679-0	Y	284
1-160301-8	1-160305-8	1	4.0-6.0	3.8-5.1	0.80	0.45	BRONZE	7.6	19.7	7.7	1.7	0-041679-3	Y	284
1-160301-9	1-160305-9	1	4.0-6.0	3.8-5.1	0.80	0.45	BRONZE	7.6	19.7	7.7	1.7	0-041679-3	Y	283&4
2-160301-1	0-160305-2	1	4.0-6.0	3.8-5.1	0.80	0.45	BRASS	7.6	19.7	7.7	1.7	0-041450-0	Y	283
2-160301-2	1-160305-9	1	4.0-6.0	3.8-5.1	0.80	0.45	BRONZE	7.6	19.7	7.7	1.7	0-041450-0	Y	284
2-160301-3	2-160305-1	1	4.0-6.0	3.8-5.1	0.80	0.45	BRONZE	7.6	19.7	7.7	1.7	0-041450-0	Y	284
2-160301-5	2-160305-3	1	4.0-6.0	3.8-5.1	0.80	0.41	STEEL	7.6	19.7	7.7	1.7	0-041450-0	Y	284
2-160301-6	2-160305-4	1	4.0-6.0	3.8-5.1	0.80	0.41	STEEL	7.6	19.7	7.7	1.7	0-041450-0	Y	284
2-160301-7	1-160305-3	1	4.0-6.0	3.8-5.1	0.80	0.45	BRASS	7.6	19.7	7.7	1.7	0-041449-0	Y	283&4
0-160327-1	0-160412-1	1	1.0-2.5	3.0-4.3	0.80	0.45	BRASS	7.6	19.2	7.7	1.7	0-041202-0	Y	181
0-160327-2	0-160412-2	1	1.0-2.5	3.0-4.3	0.80	0.45	BRASS	7.6	19.2	7.7	1.7	0-041274-0	Y	181
0-160327-3	0-160412-3	1	1.0-2.5	3.0-4.3	0.80	0.45	BRASS	7.6	19.2	7.7	1.7	0-041678-0	Y	181
0-160389-1	0-160412-1	1	0.3-0.8	2.3-3.3	0.80	0.41	STEEL	7.6	19.2	7.7	2.3	0-041202-0	Y	1
0-160389-2	0-160412-2	1	0.3-0.8	2.3-3.3	0.80	0.41	STEEL	7.6	19.2	7.7	2.3	0-041274-0	Y	1
0-160389-3	0-160412-3	1	0.3-0.8	2.3-3.3	0.80	0.41	STEEL	7.6	19.2	7.7	2.3	0-041274-0	Y	183
0-160432-1	0-160506-1	1	0.5-1.5	2.3-3.3	0.80	0.41	BRASS	7.6	19.2	7.7	2.3	0-041219-1	N	1
0-160432-2	0-160506-2	1	0.5-1.5	2.3-3.3	0.80	0.41	BRASS	7.6	19.2	7.7	2.3	0-041274-0	Y	184
0-160432-3	0-160506-3	1	0.5-1.5	2.3-3.3	0.80	0.41	STEEL	7.6	19.2	7.7	2.3	0-041202-0	Y	184
0-160432-4	0-160506-4	1	0.5-1.5	2.3-3.3	0.80	0.41	BRASS	7.6	19.2	7.7	2.3	0-041274-0	Y	184
0-160432-5	0-160506-5	1	0.5-1.5	2.3-3.3	0.80	0.41	BRASS	7.6	19.2	7.7	2.3	0-041274-0	Y	183&4
0-160432-6	0-160506-6	1	0.5-1.5	2.3-3.3	0.80	0.41	BRASS	7.6	19.2	7.7	2.3	0-041274-0	Y	183&4
0-160432-7	0-160506-7	1	0.5-1.5	2.3-3.3	0.80	0.41	BRASS	7.6	19.2	7.7	2.3	0-041274-0	Y	184
0-160432-8	0-160506-8	1	0.5-1.5	2.3-3.3	0.80	0.41	STEEL	7.6	19.2	7.7	2.3	0-041219-1	N	184
0-160432-9	0-160506-9	1	0.5-1.5	2.3-3.3	0.80	0.41	STEEL	7.6	19.2	7.7	2.3	0-041219-1	N	184
0-160432-0	0-160506-0	1	0.5-1.5	2.3-3.3	0.80	0.41	BRASS	7.6	19.2	7.7	2.3	0-041773-0	N	184
0-160432-1	0-160506-1	1	0.5-1.5	2.3-3.3	0.80	0.41	BRONZE	7.6	19.2	7.7	2.3	0-061099-1	Y	184
0-160432-2	0-160506-2	1	0.5-1.5	2.3-3.3	0.80	0.41	BRONZE	7.6	19.2	7.7	2.3	0-061678-1	Y	184
0-160432-3	0-160506-3	1	0.5-1.5	2.3-3.3	0.80	0.41	BRONZE	7.6	19.2	7.7	2.3	0-041219-1	N	183&4
0-160432-4	0-160506-4	1	0.5-1.5	2.3-3.3	0.80	0.41	STEEL	7.6	19.2	7.7	2.3	0-041773-0	N	183&4
0-160432-5	0-160506-5	1	0.5-1.5	2.3-3.3	0.80	0.41	BRONZE	7.6	19.2	7.7	2.3	0-041202-0	Y	184
0-160432-6	0-160506-6	1	0.5-1.5	2.3-3.3	0.80	0.41	BRASS	7.6	19.2	7.7	2.3	0-041202-0	Y	184
0-160432-7	0-160506-7	1	0.5-1.5	2.3-3.3	0.80	0.41	BRASS	7.6	19.2	7.7	2.3	0-041202-0	Y	184
0-160432-8	0-160506-8	1	0.75-1.5	3.0-4.3	0.80	0.45	BRASS	7.6	19.2	7.7	1.7	0-041202-0	Y	1
0-160432-9	0-160506-9	1	0.75-1.5	3.0-4.3	0.80	0.45	BRASS	7.6	19.2	7.7	1.7	0-041274-0	Y	2
0-160432-0	0-160506-0	1	0.75-1.5	3.0-4.3	0.80	0.45	BRASS	7.6	19.2	7.7	1.7	0-041274-0	Y	2
0-160432-1	0-160506-1	1	0.75-1.5	3.0-4.3	0.80	0.45	BRASS	7.6	19.2	7.7	1.7	0-041274-0	Y	2

NOTE 1=LOOSE PIECE WIRE BARREL PRE CRIMPED
NOTE 2=LOOSE PIECE WIRE AND INSULATION BARREL PRE CRIMPED
NOTE 3=SPICE FREE REELED
NOTE 4=WITH CHAMFER AROUND FRONT OF RECEPTACLE

File E66717 Vol. 4 Sec. 1 and Report III.15 Iss. 5-9-84

*** RECEPTACLE 250 SERIES FASTON ***

DATE: 04/29/83	FIG.	RANGE	TAB	MATERIAL	DIMENSIONS	NEAREST	REMARKS
CATALOG NO.	WIRE	INSUL.	THK.	FINISH	W L E	US EQUIVALENT	OR NOTES
STRIP LOOSE PIECE						PARTNUMBER UL	
0-160465-3	1	0.75-1.5	3.0-4.3	0.80 0.45 BRASS	7.6 19.2 7.7	1.7 0-041678-0	Y 1
0-160742-3	1	0.75-1.5	3.0-4.3	0.80 0.41 STEEL	7.6 19.2 7.7	1.7 0-042219-1	N 2
0-160465-5	1	0.75-1.5	3.0-4.3	0.80 0.45 BRASS	7.6 19.2 7.7	1.7 0-041773-0	N 3
0-160465-6	1	0.75-1.5	3.0-4.3	0.80 0.45 BRASS	7.6 19.2 7.7	1.7 0-041773-0	N 1
0-160563-4	1	0.75-1.5	3.0-4.3	0.80 0.45 BRASS	7.6 19.2 7.7	1.7 0-041678-1	Y 2
0-160742-2	1	0.75-1.5	3.0-4.3	0.80 0.45 BRASS	7.6 19.2 7.7	1.7 0-041678-1	Y 1
0-160563-5	1	0.75-1.5	3.0-4.3	0.80 0.41 STEEL	7.6 19.2 7.7	1.7 0-041202-0	Y 1
0-160742-5	1	0.75-1.5	3.0-4.3	0.80 0.45 BRASS	7.6 19.2 7.7	1.7 0-041274-0	Y 2
0-160465-8	1	0.75-1.5	3.0-4.3	0.80 0.45 BRASS	7.6 19.2 7.7	1.7 0-041274-0	Y 1
0-160465-9	1	0.75-1.5	3.0-4.3	0.80 0.45 BRASS	7.6 19.2 7.7	1.7 0-041274-0	Y 2
1-160465-0	1	0.75-1.5	3.0-4.3	0.80 0.45 BRASS	7.6 19.2 7.7	1.7 0-041274-0	Y 2
1-160465-1	1	0.75-1.5	3.0-4.3	0.80 0.45 BRASS	7.6 19.2 7.7	1.7 0-041274-0	Y 1
1-160465-2	1	0.75-1.5	3.0-4.3	0.80 0.45 BRASS	7.6 19.2 7.7	1.7 0-041274-0	Y 1
1-160465-3	1	0.75-1.5	3.0-4.3	0.80 0.45 BRASS	7.6 19.2 7.7	1.7 0-041274-0	Y 1
5-160465-1	1	0.75-1.5	3.0-4.3	0.80 0.45 BRASS	7.6 19.2 7.7	1.7 0-041274-0	Y 1
5-160742-1	1	0.75-1.5	3.0-4.3	0.80 0.45 BRASS	7.6 19.2 7.7	1.7 0-041274-0	Y 1
5-160563-2	1	0.75-1.5	3.0-4.3	0.80 0.45 BRASS	7.6 19.2 7.7	1.7 0-041274-0	Y 1
5-160742-2	1	0.75-1.5	3.0-4.3	0.80 0.45 BRASS	7.6 19.2 7.7	1.7 0-041274-0	Y 1
5-160465-3	1	0.75-1.5	3.0-4.3	0.80 0.45 BRASS	7.6 19.2 7.7	1.7 0-041274-0	Y 1
5-160742-3	1	0.75-1.5	3.0-4.3	0.80 0.45 BRASS	7.6 19.2 7.7	1.7 0-041274-0	Y 1
5-160563-4	1	0.75-1.5	3.0-4.3	0.80 0.45 BRASS	7.6 19.2 7.7	1.7 0-041274-0	Y 1
5-160742-4	1	0.75-1.5	3.0-4.3	0.80 0.45 BRASS	7.6 19.2 7.7	1.7 0-041274-0	Y 1
5-160563-5	1	0.75-1.5	3.0-4.3	0.80 0.45 BRASS	7.6 19.2 7.7	1.7 0-041274-0	Y 1
5-160742-5	1	0.75-1.5	3.0-4.3	0.80 0.45 BRASS	7.6 19.2 7.7	1.7 0-041274-0	Y 1
5-160465-7	1	0.75-1.5	3.0-4.3	0.80 0.45 BRASS	7.6 19.2 7.7	1.7 0-041274-0	Y 1
5-160465-8	1	0.75-1.5	3.0-4.3	0.80 0.45 BRASS	7.6 19.2 7.7	1.7 0-041274-0	Y 1
5-160465-9	1	0.75-1.5	3.0-4.3	0.80 0.45 BRASS	7.6 19.2 7.7	1.7 0-041274-0	Y 1
6-160465-0	1	0.75-1.5	3.0-4.3	0.80 0.45 BRASS	7.6 19.2 7.7	1.7 0-041274-0	Y 1
6-160742-1	1	0.75-1.5	3.0-4.3	0.80 0.45 BRASS	7.6 19.2 7.7	1.7 0-041274-0	Y 1
6-160563-2	1	0.75-1.5	3.0-4.3	0.80 0.45 BRASS	7.6 19.2 7.7	1.7 0-041274-0	Y 1
6-160742-2	1	0.75-1.5	3.0-4.3	0.80 0.45 BRASS	7.6 19.2 7.7	1.7 0-041274-0	Y 1
6-160465-1	1	0.75-1.5	3.0-4.3	0.80 0.45 BRASS	7.6 19.2 7.7	1.7 0-041274-0	Y 1
6-160465-2	1	0.75-1.5	3.0-4.3	0.80 0.45 BRASS	7.6 19.2 7.7	1.7 0-041274-0	Y 1
6-160465-3	1	0.75-1.5	3.0-4.3	0.80 0.45 BRASS	7.6 19.2 7.7	1.7 0-041274-0	Y 1
6-160465-4	1	0.75-1.5	3.0-4.3	0.80 0.45 BRASS	7.6 19.2 7.7	1.7 0-041274-0	Y 1
0-160515-1	1	1.0-2.5	3.1-4.3	0.80 0.45 BRASS	7.6 19.2 7.7	1.7 0-041773-0	Y
0-160515-2	1	1.0-2.5	3.1-4.3	0.80 0.45 BRASS	7.6 19.2 7.7	1.7 0-041773-0	N
0-160516-1	1	4.0-6.0	3.8-5.1	0.80 0.45 BRASS	7.6 19.7 7.7	1.7	
0-160516-2	1	4.0-6.0	3.8-5.1	0.80 0.43 BRASS	7.6 19.7 7.7	1.7	
0-160541-1	1	1.0-2.5	3.0-4.3	0.80 0.45 BRASS	7.6 19.2 7.7	1.7 0-041202-0	Y
0-160608-2	1	2.1-5.3	3.8-5.1	0.80 0.41 STEEL	7.3 19.7 7.7	1.7 0-042219-1	N

NOTE 1-LOOSE PIECE WIRE BARREL PRE CRIMPED
NOTE 2-LOOSE PIECE WIRE AND INSULATION BARREL PRE CRIMPED
NOTE 3-SPLICE FREE REELED
NOTE 4-WITH CHAMFER AROUND FRONT OF RECEPTACLE

File E66717 Vol. 4 Sec. 1

and Report

Th. 16

Iss. 5-9-84

- 6 -

*** RECEPTACLE 250 SERIES FASTON ***									
DATE: 04/29/83	FIG. NO.	RANGE	TAB	MATERIAL	THK. TYPE	FINISH	DIMENSIONS	US EQUIVALENT	REMARKS
CATALOG NO.	LOOSE PIECE	WIRE	INSUL.				W L E Y	PARTNUMBER	UL OR NOTES
0-160722-1	0-041858-0	1 2.1-5.3	3.0-5.1	0.80	0.45	BRASS	7.6 19.7 7.7 1.7	0-041449-0	Y 2&3
0-160722-2	0-042075-1	1 2.1-5.3	3.0-5.1	0.80	0.45	BRASS	7.6 19.7 7.7 1.7	0-041450-0	Y 2&3
0-160739-1	0-160830-1	3 0.8-2.1	3.0-4.3	0.80	0.38	BRASS	7.6 19.5 7.7 2.3	0-061944-1	Y 3
0-160739-2	0-160830-2	3 0.8-2.1	3.0-4.3	0.80	0.38	BRASS	7.6 19.5 7.7 2.3	0-061944-2	Y 3
0-160739-3	0-160830-3	3 0.8-2.1	3.0-4.3	0.80	0.38	BRASS	7.6 19.5 7.7 2.3		3
0-160739-4	0-160830-4	3 0.8-2.1	3.0-4.3	0.80	0.38	BRASS	7.6 19.5 7.7 2.3		3
0-160739-5	0-160830-5	3 0.8-2.1	3.0-4.3	0.80	0.38	BRASS	7.6 19.5 7.7 2.3		3
0-160739-6	0-160830-6	3 0.8-2.1	3.0-4.3	0.80	0.38	BRASS	7.6 19.5 7.7 2.3		3
0-160739-7	0-160830-7	3 0.8-2.1	3.0-4.3	0.80	0.38	BRASS	7.6 19.5 7.7 2.3		3
0-160769-1	0-160813-1	1 0.5-1.5	2.3-3.3	0.50	0.41	BRASS	7.6 19.2 7.7 2.3	0-41202-0	Y
0-160769-2	0-160813-2	1 0.5-1.5	2.3-3.3	0.50	0.41	BRASS	7.6 19.2 7.7 2.3	0-41274-0	Y
0-160769-3	0-160813-3	1 0.5-1.5	2.3-3.3	0.50	0.41	BRASS	7.6 19.2 7.7 2.3	0-41202-0	Y
0-160769-4	0-160813-4	1 0.5-1.5	2.3-3.3	0.50	0.41	BRASS	7.6 19.2 7.7 2.3	0-41274-0	Y
0-160769-5	0-160813-5	1 0.5-1.5	2.3-3.3	0.50	0.41	BRASS	7.6 19.2 7.7 2.3	0-41202-0	Y
0-160808-1	0-160814-1	1 1.0-2.5	3.0-4.3	0.80	0.41	NI-AC	7.6 19.2 7.7 1.7	0-42219-1	N
0-180371-1	0-180434-1	2 1.0-2.5	3.0-4.3	0.80	0.41	BRASS	7.6 15.5 7.6 2.3		2.3
0-180371-2	0-180434-2	2 1.0-2.5	3.0-4.3	0.80	0.41	BRASS	7.6 15.5 7.6 2.3		2.3
0-180371-3	0-180434-3	2 1.0-2.5	3.0-4.3	0.80	0.41	BRASS	7.6 15.5 7.6 2.3		2.3
0-180371-4	0-180434-4	2 1.0-2.5	3.0-4.3	0.80	0.41	BRASS	7.6 15.5 7.6 2.3		2.3
0-180371-5	0-180434-5	2 1.0-2.5	3.0-4.3	0.80	0.41	BRASS	7.6 15.5 7.6 2.3		2.3
0-180388-1	0-180430-1	2 0.5-1.5	2.3-3.3	0.80	0.41	BRASS	7.6 15.5 7.6 2.3	0-062812-1	N
0-180388-2	0-180430-2	2 0.5-1.5	2.3-3.3	0.80	0.41	BRASS	7.6 15.5 7.6 2.3	0-062812-2	N
0-180388-3	0-180430-3	2 0.5-1.5	2.3-3.3	0.80	0.41	BRASS	7.6 15.5 7.6 2.3		2.3
0-180388-4	0-180430-4	2 0.5-1.5	2.3-3.3	0.80	0.41	BRASS	7.6 15.5 7.6 2.3		2.3
0-180388-5	0-180430-5	2 0.5-1.5	2.3-3.3	0.80	0.41	BRASS	7.6 15.5 7.6 2.3		2.3
0-180388-6	0-180430-6	2 0.5-1.5	2.3-3.3	0.80	0.41	BRASS	7.6 15.5 7.6 2.3		2.3
0-180388-7	0-180430-7	2 0.5-1.5	2.3-3.3	0.80	0.41	BRASS	7.6 15.5 7.6 2.3	0-062812-1	N
0-180388-8	0-180430-8	2 0.5-1.5	2.3-3.3	0.80	0.41	BRASS	7.6 15.5 7.6 2.3	0-062812-2	N
0-180397-1	0-180429-1	2 1.0-2.5	3.0-4.3	0.80	0.41	BRASS	7.6 15.5 7.6 2.3	0-062812-1	N
0-180397-2	0-180429-2	2 1.0-2.5	3.0-4.3	0.80	0.41	BRASS	7.6 15.5 7.6 2.3	0-062812-2	N
0-180397-3	0-180429-3	2 1.0-2.5	3.0-4.3	0.80	0.41	BRASS	7.6 15.5 7.6 2.3		2.3
0-180397-4	0-180429-4	2 1.0-2.5	3.0-4.3	0.80	0.41	BRASS	7.6 15.5 7.6 2.3		2.3
0-180397-5	0-180429-5	2 1.0-2.5	3.0-4.3	0.80	0.41	BRASS	7.6 15.5 7.6 2.3		2.3
0-180397-6	0-180429-6	2 1.0-2.5	3.0-4.3	0.80	0.41	BRASS	7.6 15.5 7.6 2.3		2.3

NOTE 1-LOOSE PIECE WIRE BARREL PRE CRIMPED
NOTE 2-LOOSE PIECE WIRE AND INSULATION BARREL PRE CRIMPED
NOTE 3-SPLICE FREE REELED
NOTE 4-WITH CHAMFER AROUND FRONT OF RECEPTACLE

Technical drawing of a connector with dimensions: .250 (6.4), .590 (15), .0126 (0.32), .221 (5.6), .020 (0.5) MAX, .031 (0.8) TAB THICKNESS.

File E66717

Vol. 4

Sec. 1
and Report

Ill. 18

Iss. 5-9-84

Nov. 4-17-86

RESTRICTED

	TIN PLATED	BRASS	160883-2
	UNPLATED	BRASS	160883-1
	FINISH	MATERIAL	PART NUMBER

CUSTOMER DRAWING

FOR REFERENCE ONLY
WILL NOT BE UPDATED

AMP

AMP-HOLLAND B.V.
's-Hertogenbosch, The Netherlands

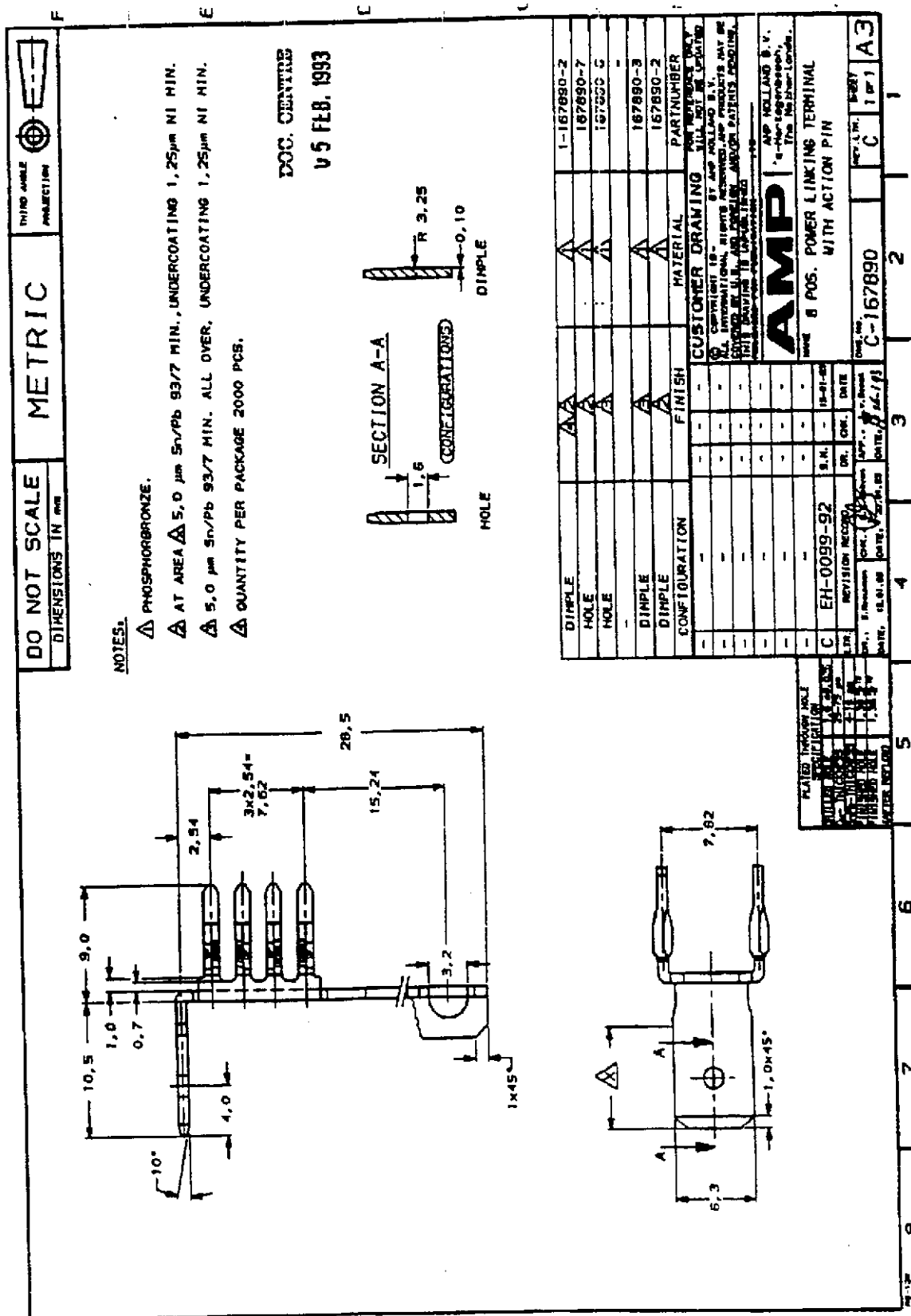
THIS DRAWING IS UNPUBLISHED

RELEASED FOR PUBLICATION 1. 11. 1985

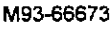
© COPYRIGHT 1985 BY AMP-HOLLAND B.V.
ALL INTERNATIONAL RIGHTS RESERVED.
AMP PRODUCTS MAY BE COVERED BY U.S. AND FOREIGN PATENTS AND/OR PATENTS PENDING

DR. R.v.LOKVEN 01.11.85	WIRE RANGE 0.5-1.5 MM2	NAME 187 SRS FASTON REC	REV DATE D M Y 8 11 85
CHK. 	INSUL. RANGE .090-.130 DIA (2.3-3.3)		
APP. 	SIZE A4	SHEET 1 OF 1	DRAWING NO C 160883
			REV. LTR A

and Report



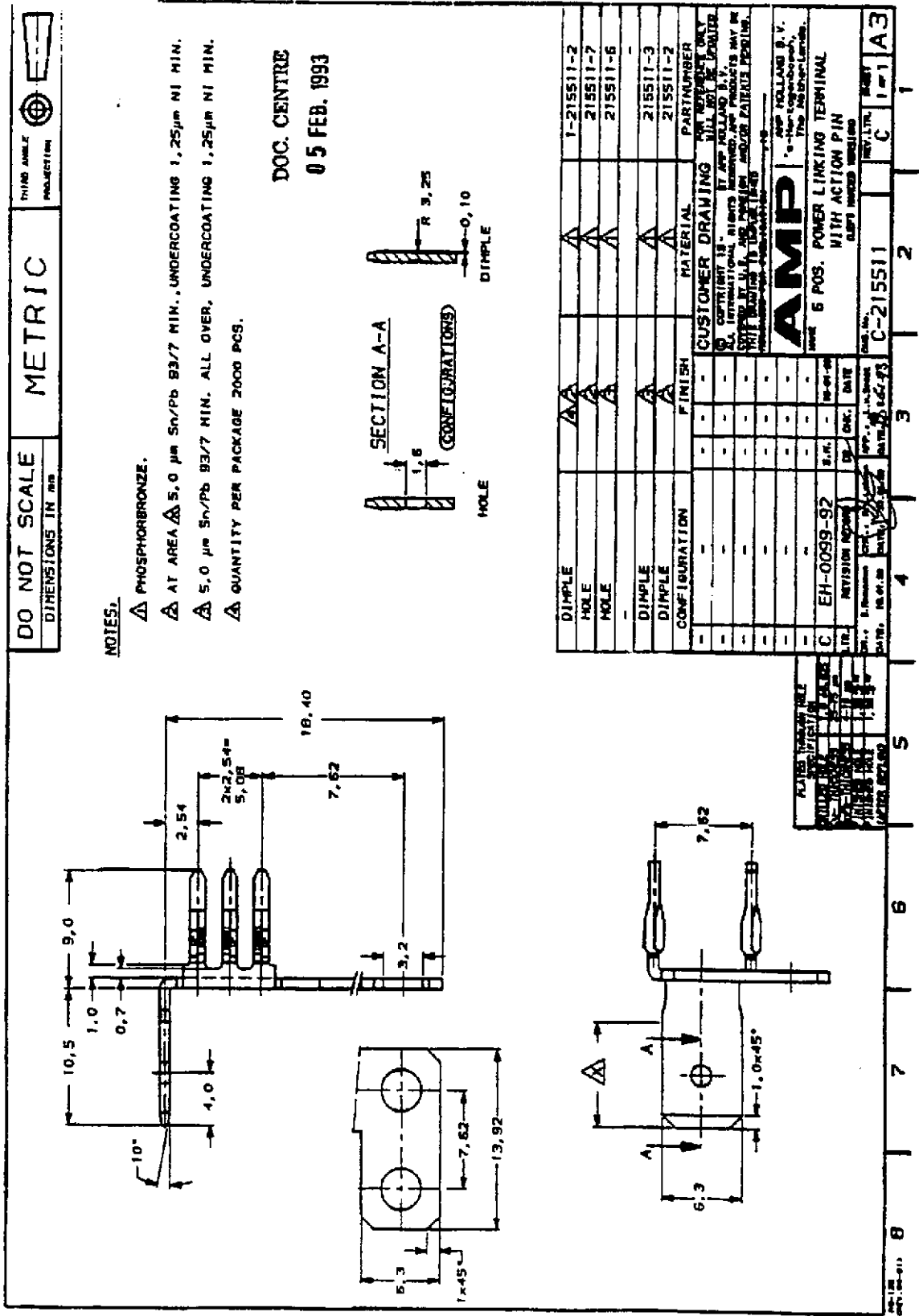
M93-66672



New: 12-16-93

M93-66675





M93-66677

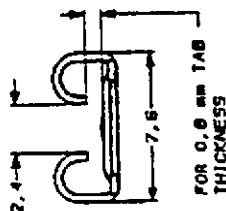
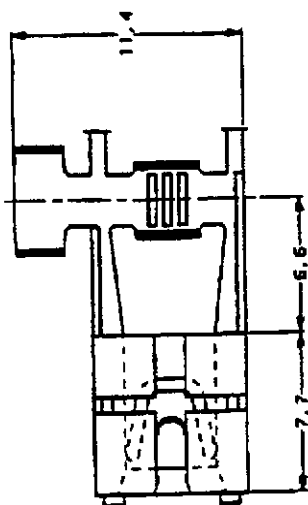
New: 01-26-94


 NATIONAL BUREAU OF STANDARDS
 Gaithersburg, Maryland 20899

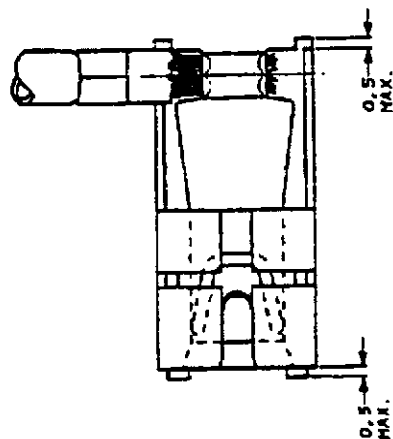
FOR USE ON MINIATURE APPLICATORS (LEFT-RIGHT FEED)

FOR USE ON MINIATURE APPLICATORS (LEFT-RIGHT FEED)

A HAND TOOL SHOULD BE USED.



FOR 0,0 mm TAB THICKNESS

[illegible]

WIRE RANGE :
1.0 - 2.5 cm ²
INSULATION RANGE :
2.5 - 3.0 cm dia.

M94-67845

and Report

DO NOT SCALE

METRIC

THIRD ANGLE PROJECTION

DIMENSIONS IN mm

15.0
MAX.

7.6

7.7

4.3

2.4

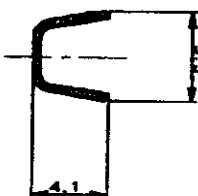
17.5
MAX.

FOR 0.8mm TAB
THICKNESS

WIRE RANGE : 18 - 12 AWG		TINPLATED		PH. BRONZE		100546-4	
INSULATION RANGE : 2.8 - 5.3 mm DIA.		UNPLATED		PH. BRONZE		100546-3	
		TINPLATED		BRASS		100546-2	
		UNPLATED		BRASS		100546-1	
		FINISH		MATERIAL		PART NUMBER	
-	-	-	-	CUSTOMER DRAWING FOR REFERENCE ONLY WILL NOT BE UPDATED			
-	-	-	-	© COPYRIGHT 19- BY AMP HOLLAND B.V. ALL INTERNATIONAL RIGHTS RESERVED. AMP PRODUCTS MAY BE COVERED BY U.S. AND FOREIGN AND/OR PATENTS PENDING.			
-	-	-	-	THIS DRAWING IS UNPUBLISHED RELEASED FOR PUBLICATION			
-	-	-	-	AMP HOLLAND B.V. s-Hertogenbosch, The Netherlands.			
-	-	-	-	NAME			
0	H-9565	R.D.	P.E.	LIF TAB-LOK FASTON FLAG .250 SRS			
L.T.R. REVISION RECORD		DR. CHK. DATE					
DR. S. DAMER	CHK. P. BEJNEN	APP. L.V. SOEST		DWG. NO.		REV. L.T.R.	SHEET
DATE: 23.04.82	DATE: -	DATE: 01.04.82		C-100646		0	1 of 1
A4							

18-127 REV. 04-813

[illegible]



SECTION B-B

SECTION C-C

ADATTO PER LINGUETTA SPESS. 0.8
(FIT FOR TAB THK 0.8)

HELD FOR INFORMATION
 DO NOT SOLID
 DISCREPANCY IN
 DIMENSIONS IN CIRCLES
MEETRIC
 AND ELONG STUDIES
 EUROPEAN PROJECT (EU)

- ▲ NOT DISPONIBILE DALL' AREA ITALIA
 ▲ NOT AVAILABLE FROM AREA ITALY
 ▲ QUANTO PER APP-O-MATOR
 CREASER RELEF PER MINI APPLICATORI
 ▲ BOJUNA IN CARTONE CON CARTA INTERPOSTA
 QUANTO PER BOJUNA 3000
 6.11 PER REG. 30003
 ▲ CON SPECIALE RIVESTIMENTO IN CARTA
 CON SPECIAL PAPER COVER
 ▲ BOJUNA IN CARTONE CON CARTA INTERPOSTA
 QUANTO PER BOJUNA 2500
 6.11 PER REG. WITH INTERPOSED PAPER STRIPS
 6.11 PER REG. 25003

[illegible]

**CUSTOMER DWG.
FOR REFERENCE ONLY**

**DISEÑO PER CLIENTE
SOLO PER RIFERIMENTO**

[illegible]

AMP
AND ITALIA S.p.A.
Lombard P.U. 6071, in
MILANO, COSELE

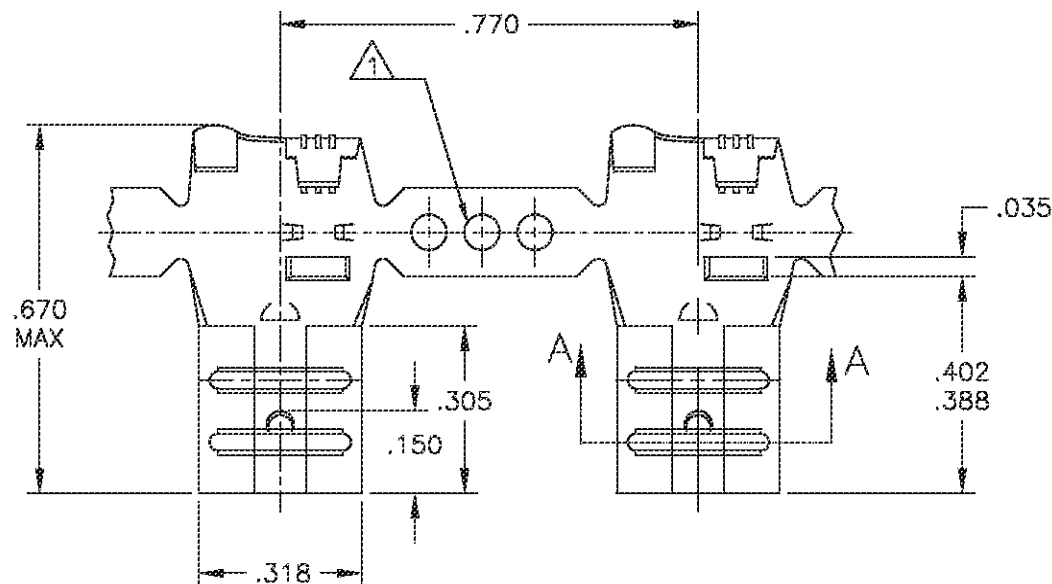
250 SERIES FLAG

FASTON REC

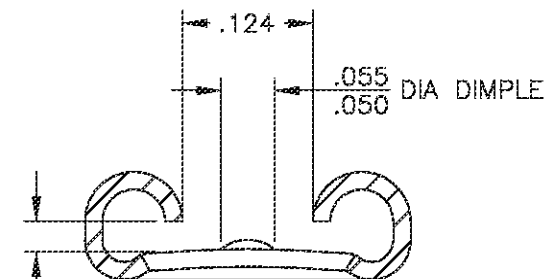
1A C-180388 BB71 1 1

THIS DRAWING IS UNPUBLISHED.
 RELEASED FOR PUBLICATION
 ALL RIGHTS RESERVED.

LOC	DIST	REVISIONS				
AF	50	P	LTR	DESCRIPTION	DATE	DRN
		A		INITIAL RELEASE	27JUN2017	HG
						TD

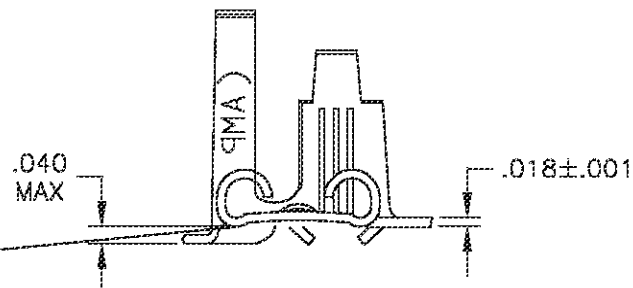


- 1 SINGLE OR DOUBLE PILOT HOLE OPTIONAL
- 2 SPLICES PRESENT ON REEL.
- 3 THIS DRAWING IS RESTRICT TO GREE



FITS .250 SERIES
FASTON TAB

SECTION A-A
SCALE 8:1



.110-.210	18-12	.032	41802-4
INSULATION RANGE	WIRE SIZE	MATING TAB	PART NO
THIS DRAWING IS A CONTROLLED DOCUMENT.			
DIMENSIONS: INCHES		TOLERANCES UNLESS OTHERWISE SPECIFIED:	
		0 PLC	± .
		1 PLC	± .
		2 PLC	± .
		3 PLC	± .015
		4 PLC	± .
MATERIAL		FINISH	
BRASS		TIN	
DRN		6/27/2017	
CHK		6/27/2017	
APVD		6/27/2017	
NAME		HOGAN GUO	
PRODUCT SPEC		TIM DING	
APPLICATION SPEC		TIM DING	
WEIGHT		—	
CUSTOMER DRAWING		—	
SIZE		A3	
CAGE CODE		00779	
DRAWING NO		C-41802	
RESTRICTED TO		GREE	
SCALE		4:1	
SHEET		1 OF 1	
REV		A	

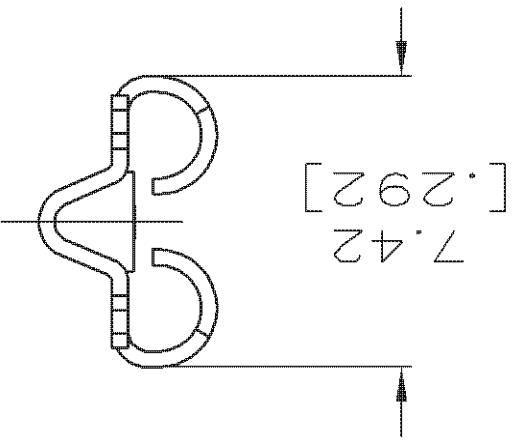
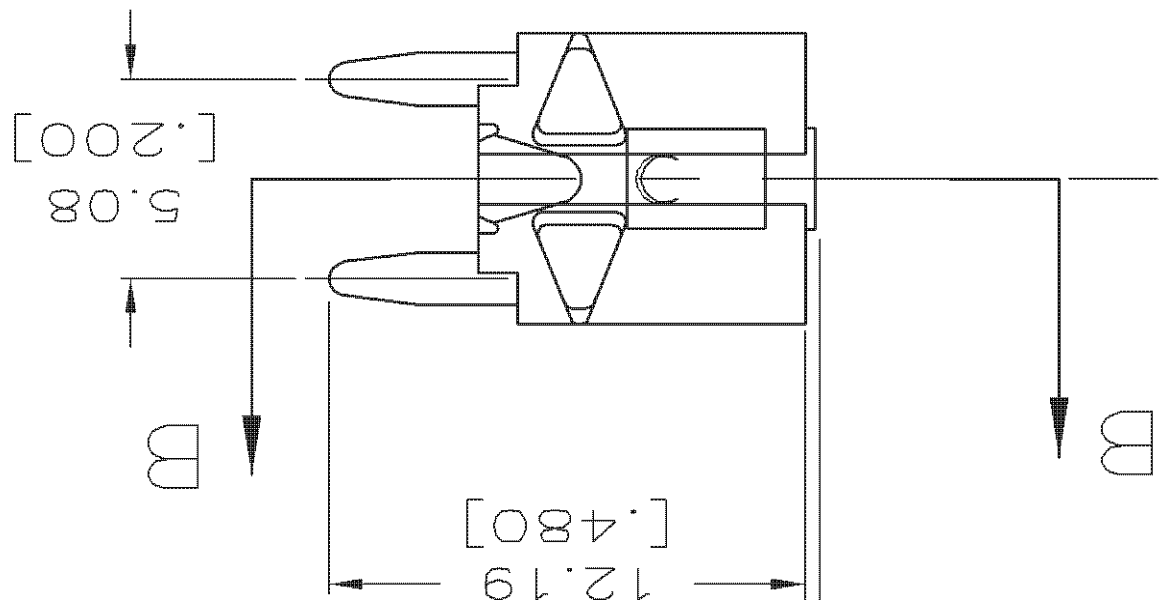
TE TE Connectivity

RECEPTACLE, FASTON,
FLAG, .250 SERIES

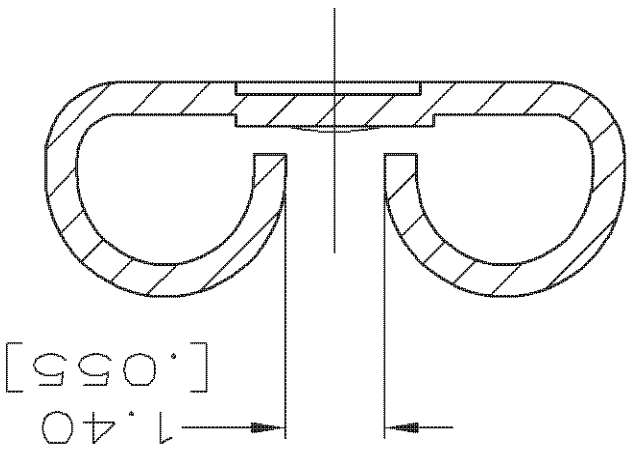
P	LTR	DESCRIPTION	DATE	DWN	APVD
	B1	REVISED PER ECO-11-005027	12MAR11	RK	HMR

RELEASED FOR PUBLICATION	ALL RIGHTS RESERVED.
--------------------------	----------------------

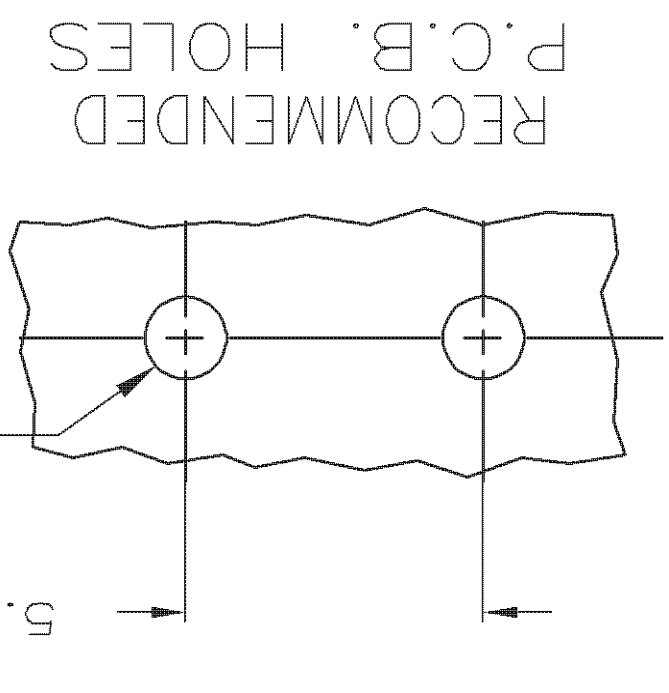
0.25 [0.010] MAX CUT-OFF



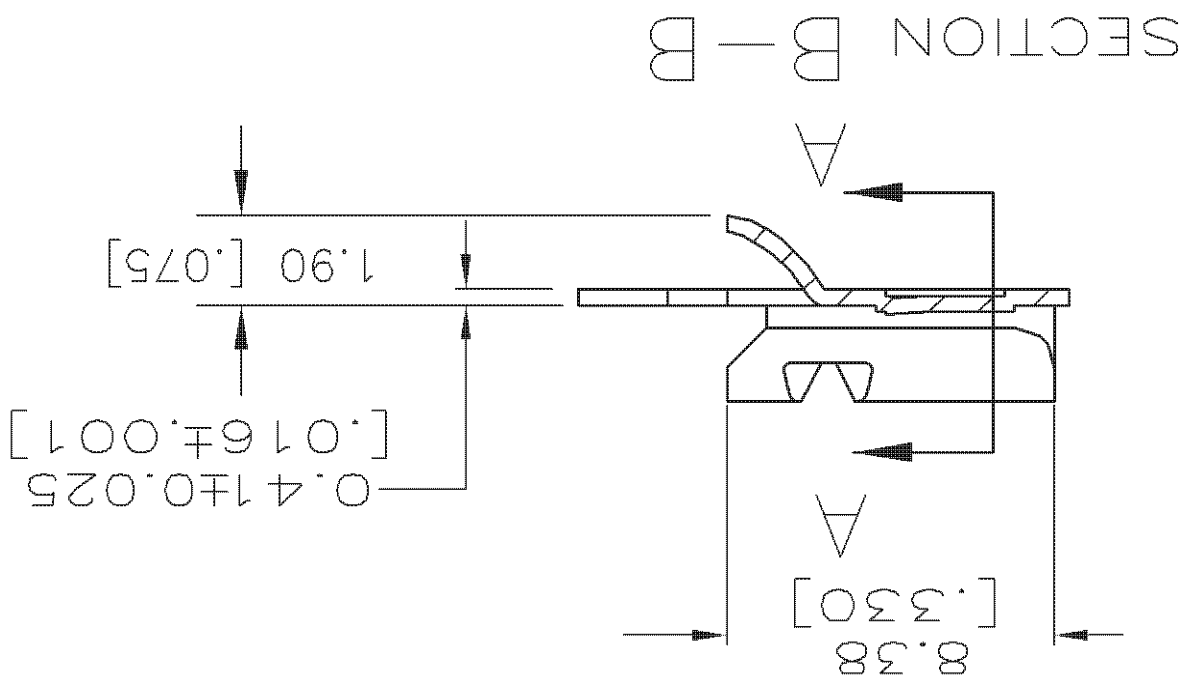
1	SUPPLIED IN LOOSE PIECE FORM.
2	0.00254 [0.00100] MIN THK TIN OVER 0.00254 [0.00100] MIN THK COPPER, OR OVER 0.00127 [0.00050] MIN NICKEL.
3	MATING TAB THK IS 0.81±0.025 [0.032±.001].



SECTION A-A
SCALE 8:1



RECOMMENDED
P.C.B. HOLES

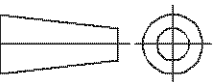


SECTION B-B

[illegible]

2 -

H04 BRASS



0 PLC	1 PLC	2 PLC	3 PLC	4 PLC	ANGLES	FINISH
-------	-------	-------	-------	-------	--------	--------

	-
	-
	-
[0.10]	-
	-
	-

TOLERANCES UNLESS OTHERWISE SPECIFIED:

APVD
D BRATIN

MS FEHE
CHK

JR RUTH

NAME



TE Connectivity

607-205] SERIES, PC BOARD MOUNTED

A3|00779|C-1217080

RESTRICTED

CUSTOMER DRAWING

SCALE

SHEET

1

B1

1470-19 (3/11)