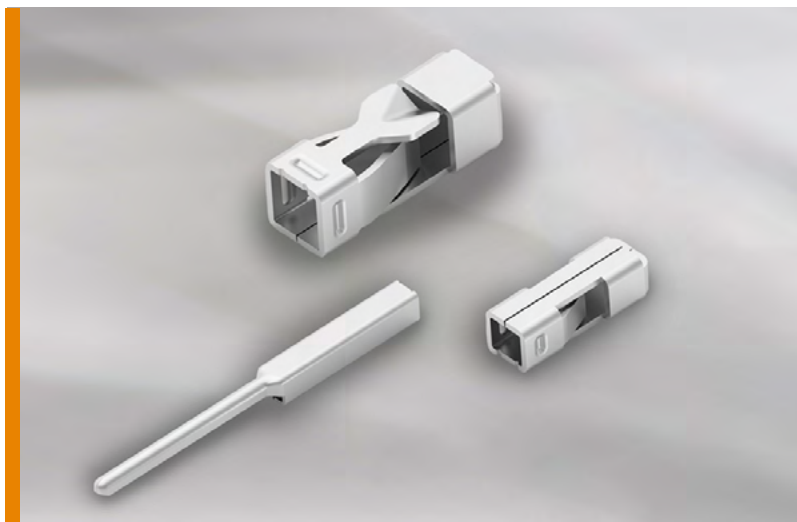


# INTRODUCING POKE-IN SLIM WIRE CONNECTORS

- Allow for quick rework with release function
- Save space with compact design for densely populated PCB layouts



Connectivity (TE) introduces SMT Poke-In Slim Wire Connectors, designed for quick and easy wire-to-board and board-to-board connectivity in a low profile, slim form factor. The releasable contact function along with the design for multiple wire sizes allows for convenience in installation and rework. Additionally, the low profile and small footprint allow for high density and compact PCB designs.

## BENEFITS

- Allow for quick rework with release function
- Save space with compact design for densely populated PCB layouts
- Help to reduce size and cost with bare contact compared to versions with housings
- Help reduce installation time as a wide range of wire sizes is accepted

## ELECTRICAL

- Current Rating:
  - 10 A for wire 18AWG
  - 6A for wire 20AWG & 22AWG
  - 4A for board to board connection
- Voltage Rating: 300V AC Max.

## MECHANICAL

- Operating Temperature: -40°C to +105°C
- Wire Gauge - 2834167-3:
  - 18-22AWG (solid/stranded)
  - 2834171-3: 20-24AWG (solid/stranded)
- Tin dipped required for stranded (only on 2834171-3)

## APPLICATIONS

- Lighting systems
- Security
- Room and area lighting
- Telecommunication systems

## STANDARDS & SPECIFICATIONS

- TE Product Specification: 108-137166
- TE Application Specification: 114-137166
- UL Approval: UL1977 / File: E28476

## MATERIAL

- Contact: Copper Alloy with Tin plating

## LEARN MORE

[Product Page](#)

[Poke-In Slim Wire Flyer](#)

[Product Listing Page](#)

[Poke-In Slim Wire Connector Part List](#)