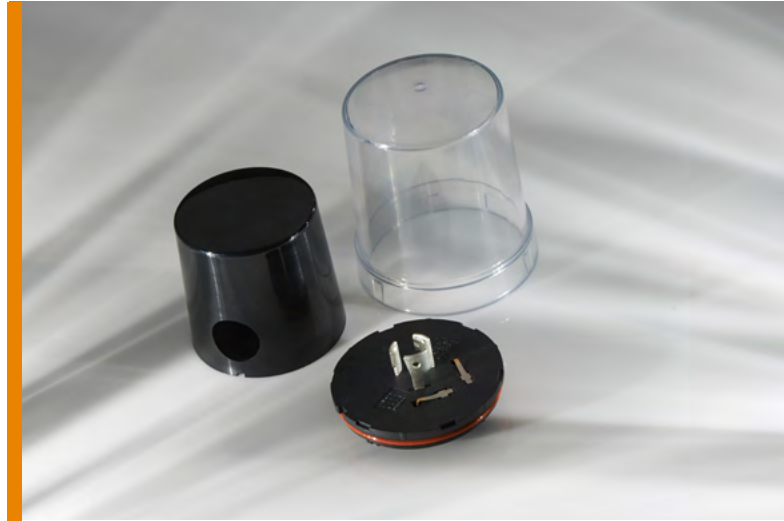


INTRODUCING LUMAWISE PHOTO CONTROL BASE ASSEMBLIES, SLEEVES AND COVERS

- Achieve an integrated TE solution that integrates power and signal interface to the dimming receptacle to ensure long term reliability
- Achieve protection against dust and heavy jet spray with an IP66 rated solution



TE Connectivity (TE) introduces the ANSI 136.41 compliant 76mm and 81mm diameter LUMAWISE photo control base assemblies with sleeves and covers in varying heights, providing a total power and signal interface between the photo control and dimming receptacle. This interface can be used in applications such as LED outdoor roadway, street and area lighting fixtures. The base assembly solution includes power twist lock terminals, spring leaf signal terminals and a separately packaged foam gasket. When coupled with the 5VA rated cover or in combination with side or the topside aperture opening colored sleeves, the fully assembled photo control achieves an IP66 seal rating.

BENEFITS

- Achieve an integrated TE solution that integrates power and signal interface to the dimming receptacle to ensure long term reliability
- Offers translucent covers that are configured to transmit daylight to the light sensing device
- Achieve protection against dust and heavy jet spray with an IP66 rated solution
- Meet the highest UL 94 flammability rating with a 5V A rated cover
- Maximize effectiveness of light sensing devices with optional clear covers
- Accommodate directional light sensing devices through sleeves designed with side or topside aperture openings
- Support customer specific requests through colored sleeves

APPLICATIONS

- Parking lots
- Pathways and trails
- Parks
- Car dealership

STANDARDS & SPECIFICATIONS

- Product Specification: 108-32125 ANSI C136.41-2013
- Application Specification: 114-32159 ANSI C136.41-2013

ELECTRICAL

- Positions: 5P, 7P

MECHANICAL

- Operating Temperature Range: -40°C to +105°C

MATERIALS

- Contact Plating: Tin plated power contacts and gold plated signal contacts
- Housing Color: Base (black) – Cover (clear and transparent)
- Housing Material:
 - Base (94 V0)
 - Cover (Polycarbonate)
 - PBT (black): Sleeve

LEARN MORE

[Street Lighting Controls Webpage](#)

[Street Lighting Dimming Photo Control Accessories Flyer](#)

[Press Release](#)

[Parts List](#)