


## MOTION & DRIVES

INNOVATIVE SOLUTIONS

TE Connectivity (TE) is your motion & drives solution provider for electromechanical and electronic components. Whether you are designing a new system or retrofitting an existing system, this solutions guide will help you select the required components with easy access to additional online information through [te.com](http://te.com). TE's product solutions support professional decentralization within your production facility making it easier to simplify or retrofit your machine architecture, save power and reduce applied cost while increasing system reliability and productivity.

# DESIGN NAVIGATOR

Get more information on [te.com](http://te.com)  by clicking on the product names below.

		Max Current Rating per Contact(A) <sup>1</sup>	Power & Signal Combined	Protection from EMI/RFI Noise	Speed & Determinism	High Vibration Performance	Thermal Performance	Quick Connect/Disconnect	Miniaturization & Space Savings	Wire-to-Wire	Wire-to-Board	Board-to-Board	Standards	
<b>1</b>	<b>CONTROLLER / PLC SYSTEM</b>													
	<a href="#">AMPLIMITE D-Subminiature Connectors</a>	7.5	●	●	●	●	●	●	●	●	●	●	UL, CSA	
	<a href="#">AMPMODU Board-to-Board &amp; Wire-to-Board Connectors</a>	1-3				●				●	●	●	UL, CSA	
	<a href="#">CHAMP Board-to-Board &amp; Wire-to-Board Connectors</a>	1.0		●	●	●		●			●	●	UL, CSA, SCSI	
	<a href="#">DIMM Sockets</a>	N/A	●	●	●								JEDEC, Industry*	
	<a href="#">DIP Switches</a>	0.1				●							N/A	
	<a href="#">Dynamic Series Wire-Applied Connectors</a>	45				●					●	●	UL, CSA, TUV	
	<a href="#">Eurocard Board-to-Board &amp; Wire-to-Board Connectors</a>	1.5	●	●	●						●	●	DIN 41612 & EIC 60603-2	
	<a href="#">Free Height (FH) Board-to-Board Connectors</a>	1.0		●	●			●				●	UL	
	<a href="#">Force Guided Relays</a>	8.0	●		●			●					UL, VDE, TUV, CQC, Industry*	
	<a href="#">Industrial USB Connectors</a>	1.5			●			●			●		UL, CSA, Industry*	
	<a href="#">Micro-MaTch Board-to-Board &amp; Wire-to-Board Conn.</a>	1.5			●			●			●	●	UL	
	<a href="#">Precision Resistors</a>	N/A			●				●				N/A	
	<a href="#">Signal PCB Relays</a>	2.0						●					UL, VDE, TUV, CQC, Industry*	
	<a href="#">Tactile Switches</a>	0.05			●				●				N/A	
	<a href="#">Terminal Blocks &amp; Strips</a>	30			●			●			●		RU, CSA	
	<a href="#">Z-STACK Board-to-Board Connectors</a>	0.3		●	●	●		●				●	UL	
<b>2</b>	<b>DRIVE UNIT</b>													
	<a href="#">AMPLIMITE D-Subminiature Connectors</a>	7.5	●	●	●	●	●	●	●	●	●	●	UL, CSA	
	<a href="#">AMPMODU Board-to-Board &amp; Wire-to-Board Connectors</a>	1-3				●				●	●	●	UL, CSA	
	<a href="#">CHAMP Board-to-Board &amp; Wire-to-Board Connectors</a>	1.0		●	●	●		●			●	●	UL, CSA, SCSI	
	<a href="#">Dynamic Series Wire-Applied Connectors</a>	45				●		●			●	●	UL, CSA, TUV	
	<a href="#">Industrial Mini I/O Connector System</a>	0.5		●	●	●		●			●		Cat5e	
	<a href="#">Industrial RJ45 Connectors</a>	0.5		●	●	●		●			●		UL, CSA, Cat5E, Cat6	
	<a href="#">Industrial USB Connectors</a>	1.5			●			●			●		UL, CSA, Industry*	
	<a href="#">Micro-MaTch Board-to-Board &amp; Wire-to-Board Connect.</a>	1.5			●			●			●	●	UL	
	<a href="#">Precision Resistors</a>	N/A			●				●				N/A	
	<a href="#">Remote I/O Terminal System (RITS) Connectors</a>	3.0			●			●			●		UL	
	<a href="#">Signal PCB Relays</a>	2.0						●					UL, VDE, TUV, CQC, Industry*	
<b>3</b>	<b>SYSTEM INTERFACE</b>													
	<a href="#">AMP Power Series Wire-Applied Connectors</a>	275				●		●		●			UL, CSA	
	<a href="#">Corcom Power Line Filters</a>		Refer to the table below for product detail										UL, CSA, VDE	
	<a href="#">Customized Cable Assemblies<sup>2</sup></a>	N/A	●	●	●	●	●	●	●	●	●	●	UL, CSA, VDE, Industry*	
	<a href="#">Identification &amp; Labeling</a>	N/A					●						UL, CSA, Industry*	
	<a href="#">Panel Mount Relays</a>	16			●	●	●	●					UL, CSA, VDE	
	<a href="#">Power Triple Lock (PTL) Wire-Applied Connectors</a>	20			●	●	●	●		●			UL, CSA, GWT	
	<a href="#">Switches</a>	20	●		●	●	●	●					UR, UL, CSA, VDDE	
	<a href="#">Terminal Blocks &amp; Strips</a>	30			●			●			●		RU, CSA	
	<a href="#">Terminals &amp; Splices</a>	30			●			●		●	●		UL, CSA, Industry*	
	<a href="#">Universal MATE-N-LOK Wire-Applied Connectors</a>	19			●	●	●	●	●	●	●	●	RU, CSA, UL, VDE	
<b>4</b>	<b>I/O (INPUT / OUTPUT)</b>													
	<a href="#">Circular Plastic Connectors (CPC)</a>	60	●			●		●		●	●	●	UL, CSA, VDE	
	<a href="#">Customized Cable Assemblies<sup>2</sup></a>	N/A	●	●	●	●	●	●	●	●	●	●	UL, CSA, VDE, Industry*	
	<a href="#">Heavy Duty Connectors (HDC)</a>	300	●	●	●	●	●	●	●	●	●	●	UL, CSA, SEV, VDE, DIN	
	<a href="#">Identification &amp; Labeling</a>	N/A					●						UL, CSA, Industry*	
	<a href="#">Industrial Ethernet Switches</a>	0.5		●	●	●		●					UL, CSA	
	<a href="#">Industrial RJ45 Connectors</a>	0.5		●	●	●	●	●	●	●	●	●	UL, CSA, Cat5e, Cat6	
<b>5</b>	<b>HMI / DISPLAY &amp; CONTROL UNIT</b>													
	Refer to the <a href="#">Innovative Solutions for Industrial Control Guide</a> for information on products included in this subsystem													
<b>6</b>	<b>MOTOR</b>													
	<a href="#">Circular Plastic Connectors (CPC)</a>	60	●			●		●		●	●	●	UL, CSA, VDE	
	<a href="#">Customized Cable Assemblies<sup>2</sup></a>	N/A	●	●	●	●	●	●	●	●	●	●	UL, CSA, VDE, Industry*	
	<a href="#">Hall Sensors / Resolvers</a>	N/A			●	●							N/A	
	<a href="#">Heavy Duty Connectors (HDC)</a>	300	●	●	●	●	●	●	●	●	●	●	UL, CSA, SEV, VDE, DIN	
	<a href="#">Industrial RJ45 Connectors</a>	0.5		●	●	●		●		●	●	●	UL, CSA, Cat5e, Cat6	
	<a href="#">MAG-MATE Terminals</a>	N/A			●					●			UL	
	<a href="#">Motorman Hybrid I/O Connectors</a>	20	●	●			●	●		●			UL, CSA, VDE, Cat5e	
	<a href="#">Power Resistors</a>	N/A				●	●	●					N/A	
	<a href="#">Universal MATE-N-LOK Wire-Applied Connectors</a>	19			●			●		●	●	●	RU, CSA, UL, VDE	
<b>7</b>	<b>SENSING DEVICE</b>													
	<a href="#">Circular Plastic Connectors (CPC)</a>	60	●			●		●		●	●	●	UL, CSA, VDE	
	<a href="#">Hall Sensors / Resolvers</a>	N/A			●	●							N/A	
	<a href="#">MB/M12 Industrial Cordsets &amp; Connectors</a>	5.0		●	●	●		●	●	●			UL, CSA	

CORCOM EMI/RFI POWER LINE FILTERS				
Series	Type	Rated Current / Voltage (max)	Agency Approvals	
<a href="#">FC Series</a>	Single Phase	RFI Filter for Frequency Converters	6 - 50A / 250 VAC	UL
<a href="#">K Series</a>		General Purpose RFI Filter	1 - 60A / 250 VAC	UL, CSA, VDE
<a href="#">AYC Series</a>	Three Phase	WYE or Delta RFI Power Line Filter	16 - 200A / 480 VAC / 277 VAC	UL
<a href="#">BCF Series</a>		Compact Delta RFI Filter	7 - 180A / 480 VAC / 277 VAC	UL, CSA, VDE


For a complete list of TE's Corcom EMI/RFI filters, visit: [www.corcom.com](http://www.corcom.com)

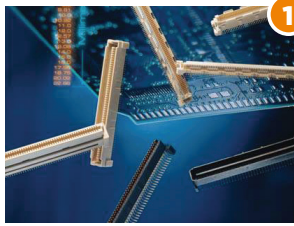
<sup>1</sup> May vary based on application and product selection  
<sup>2</sup> Solves the same problems as the applied interconnect  
 UL - UL Listed  
 RU - Recognized Under  
 CSA - Canadian Standards Association  
 \* Industry - Meets product specific industry standards (see product page on te.com for more detail)

TE offers solutions for all of your motion and drives needs.



## FEATURED PRODUCTS

Click on the links below and visit [te.com](https://te.com) for further information 

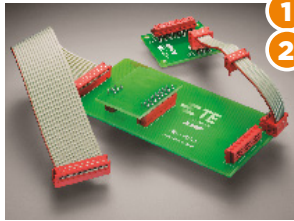


1

### Free Height (FH) Board-to-Board Connectors

- Support high reliability with polarized mating
- Provide design flexibility with a variety of stack heights
- Save valuable PCB space with compact connector design

[Website](#)  
[Catalog](#)  
[Quick Reference Guide](#)



1

2

### Micro-MaTch Board-to-Board & Wire-to-Board Connectors

- Prevent fretting corrosion and allow for a longer-lasting connection with contact spring design
- Eliminate unnecessary movement in high-vibration application with high force contact system
- Support wide variety of design options with extensive product offering

[Website](#)  
[Catalog](#)  
[Quick Reference Guide](#)



1

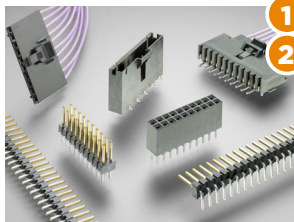
2

3

### Relays

- Withstand extreme environments with high performance designs
- Design for delayed action with internal timer option
- Support system needs with various options from a single source

[Website I](#)  
[Website II](#)  
[Shortform Catalog](#)  
[General Purpose & Signal Catalog](#)  
[Product Line Card](#)



1

2

### AMPMODU Board-to-Board & Wire-to-Board Connectors

- Achieve high vibration performance and reliability with polarized latching receptacles
- Reduce termination time with optional insulation displacement contacts (IDC)
- Satisfy a broad range of signal needs with easy application and competitively priced diverse portfolio

[Website I](#)  
[Website II](#)  
[Catalog](#)  
[Quick Reference Guide I](#)  
[Quick Reference Guide II](#)



1

2

### Dynamic Series Wire-Applied Connectors

- Suitable for low signal to high power applications with a broad range of versatile contacts
- Save time and money with a centralized modular wiring system
- Prevent mismatching with keyed housings

[Website I](#)  
[Website II](#)  
[Catalog](#)  
[Quick Reference Guide](#)



1

3

### Terminal Blocks & Strips

- Easy assembly and expansion with modular design and interlocking features
- Support repeated connect/disconnect cycles with robust clamping technology
- Gain design flexibility with broad product offering

[Website](#)



2


4

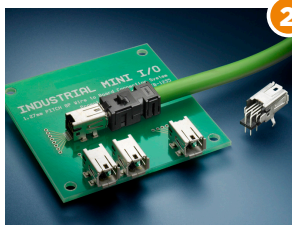
### Industrial RJ45 Connectors

- Withstand severe shock and vibration with push-pull mechanism
- Meet TIA/EIA 568 Cat5e requirements and comply with IEC61076-3-117 - Variant 14 standard
- Allow for timesaving and flexible field installation with robust termination technology

[Website](#)  
[Catalog](#)  
[Data Sheet](#)

## FEATURED PRODUCTS

Click on the links below and visit [te.com](https://te.com) for further information 

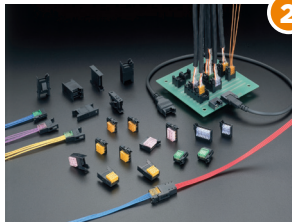


2

### Industrial Mini I/O Connector System

- Avoid mismatching with polarized housing options
- Increase reliability in high vibration environments with two points of contact
- Prevent unintentional plug pull-out with unique latching system

[Website](#)  
[Data Sheet](#)

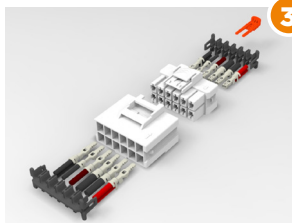


2

### Remote I/O Terminal System (RITS) Connectors

- Improve performance over IDC connector with enlarged contact area and chisel piercing design
- Provide highly secure locking for cable-to-cable connection with lock lever design
- Save cost with general hand tool for easy termination

[Website I](#)  
[Website II](#)  
[Catalog](#)

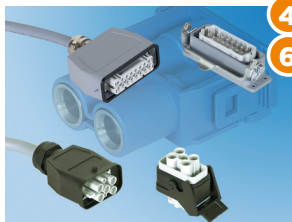


3

### Power Triple Lock (PTL) Connectors

- Ensure contacts are fully seated and protect against contact backout with optional Terminal Position Assurance (TPA)
- Achieve connector system engagement in high vibration applications with Connector Position Assurance (CPA)
- Support a variety of application requirements with three levels of housing materials

[Website I](#)  
[Website II](#)  
[Quick Reference Guide](#)  
[Whitepaper](#)  
[Video](#)



4

### Heavy Duty Connectors (HDC)

- Lower applied cost with quick and easy assembly options
- Gain machine configuration flexibility by combining power, signal and data circuits
- Withstand severe environmental conditions with IP68 configuration options

[Website](#)  
[Catalog](#)



4

### M8/M12 Industrial Cordsets & Connectors

- Enable equipment interoperability through use of standard industrial interfaces
- Industrial Ethernet solutions ranging from 100Mb through 10Gb speeds
- Improve field termination time using factory made overmolded cable assemblies

[Website](#)



4

### Circular Plastic Connectors (CPC)

- Achieve system efficiency by combining power and signal in a single interconnect
- Design for harsh environments where mechanical shock, moisture and debris are prevalent
- Accommodate quick and easy field repair with removable contacts and replaceable coupling ring

[Website](#)  
[Catalog I](#)  
[Catalog II](#)



6

### Motorman Hybrid I/O Connectors

- Accommodate power and signal interconnections through a compact, rectangular housing design
- Convenient side access to interior housing for ease of installation in compact space
- Fulfill application needs with customizable design

[Website](#)  
[Data Sheet](#)  
[Video](#)

## LET'S CONNECT

TE Connectivity brings you power products that drive design solutions. As power requirements vary depending on the application, TE helps solve your power challenges by taking the guess work out of the equation by providing a variety of products with key design characteristics. With our wide variety of products and superior design capabilities, you will find the right match for your unique application.

## Technical Support

[te.com/support-center](http://te.com/support-center)

Australia	+86 400-820-6015	Hungary	+36 1-2892040	Portugal	+34 91-6630420
Austria	+43 1-9056-0	India	+86 400-820-6015	Russia	+74 95-790-790-2200
Belgium	+31 73-6246999	Ireland	+1 800-882-391	Slovakia	+42 02-720-11102
Brazil	+55 11-2103-6000	Italy	+39 011-4012111	Slovenia	+38 615-602-132
China	+86 400-820-6015	Japan	+044-844-8052	South Africa	+97 150-457-0806
Czech Republic	+42 02-7201-1103	Korea	+02-3415-4607	Spain	+34 932-910-330
Denmark	+46 8-5072-5000	Latvia	+37 2-6778-673	Sweden	+46 8-5072-5000
Estonia	+37 2677-8673	Lithuania	+37 037426900	Switzerland	+41 71-447-0447
Finland	+46 8-5072-5000	Luxembourg	+31 73-6246999	Taiwan	+86 400-820-6015
France	+33 1-34-20-8686	Netherlands	+31 73-6246999	Turkey	+90 212-282-6053
Germany	+49 6151-607-1999	New Zealand	+86 400-820-6015	United Kingdom	+44 0800-267666
Greece	+97 1-4-347-0226	Norway	+46 8-5072-5000	United States of America	800-522-6752
Holland	+31 73-6246999	Poland	+48 22-4576750		

## te.com

2Pro, AMP, CoolSplice, Corcom, FASTON, LIGHT-N-LOK, LUMAWISE, MATE-N-LOK, NECTOR, PIDG, PLASTI-GRIP, PolySwitch, Ultra-Fast, VAL-U-LOK, TE Connectivity, TE Connectivity (logo) and Every Connection Counts are trademarks. All other logos, products and/or company names referred to herein might be trademarks of their respective owners.

The information given herein, including drawings, illustrations and schematics which are intended for illustration purposes only, is believed to be reliable. However, TE Connectivity makes no warranties as to its accuracy or completeness and disclaims any liability in connection with its use. TE Connectivity's obligations shall only be as set forth in TE Connectivity's Standard Terms and Conditions of Sale for this product and in no case will TE Connectivity be liable for any incidental, indirect or consequential damages arising out of the sale, resale, use or misuse of the product. Users of TE Connectivity products should make their own evaluation to determine the suitability of each such product for the specific application.

© 2016 TE Connectivity Ltd. family of companies All Rights Reserved.

10/16 Revised



AUTHORIZED DISTRIBUTOR