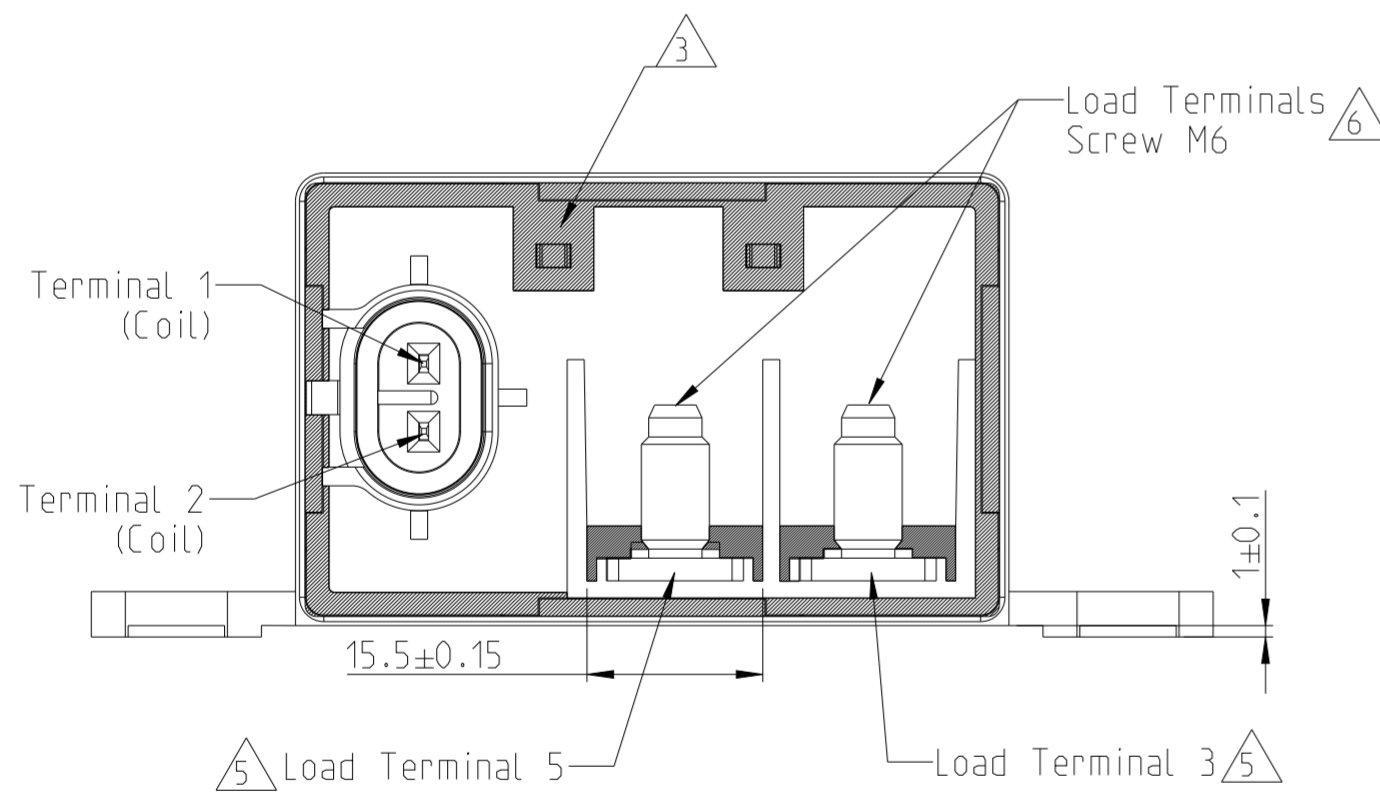
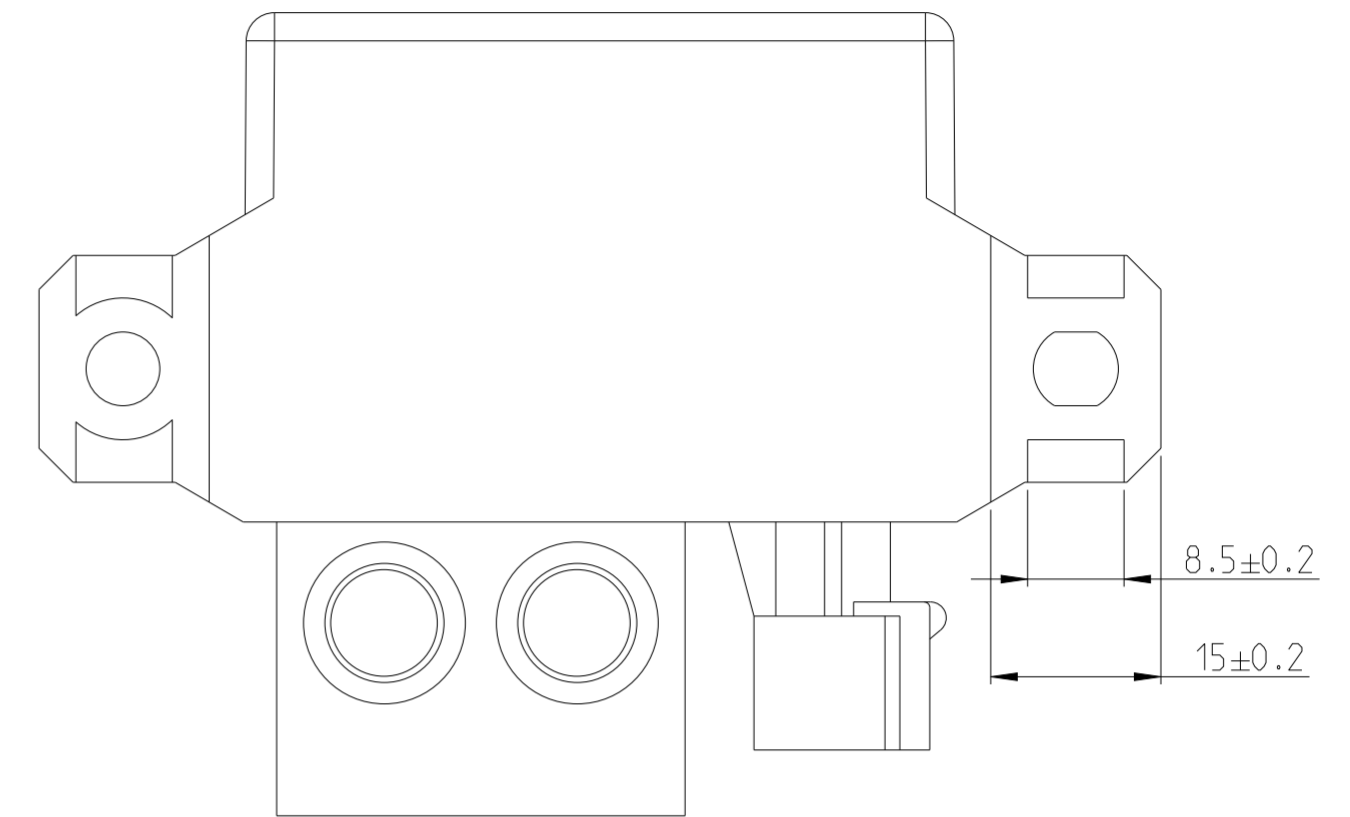
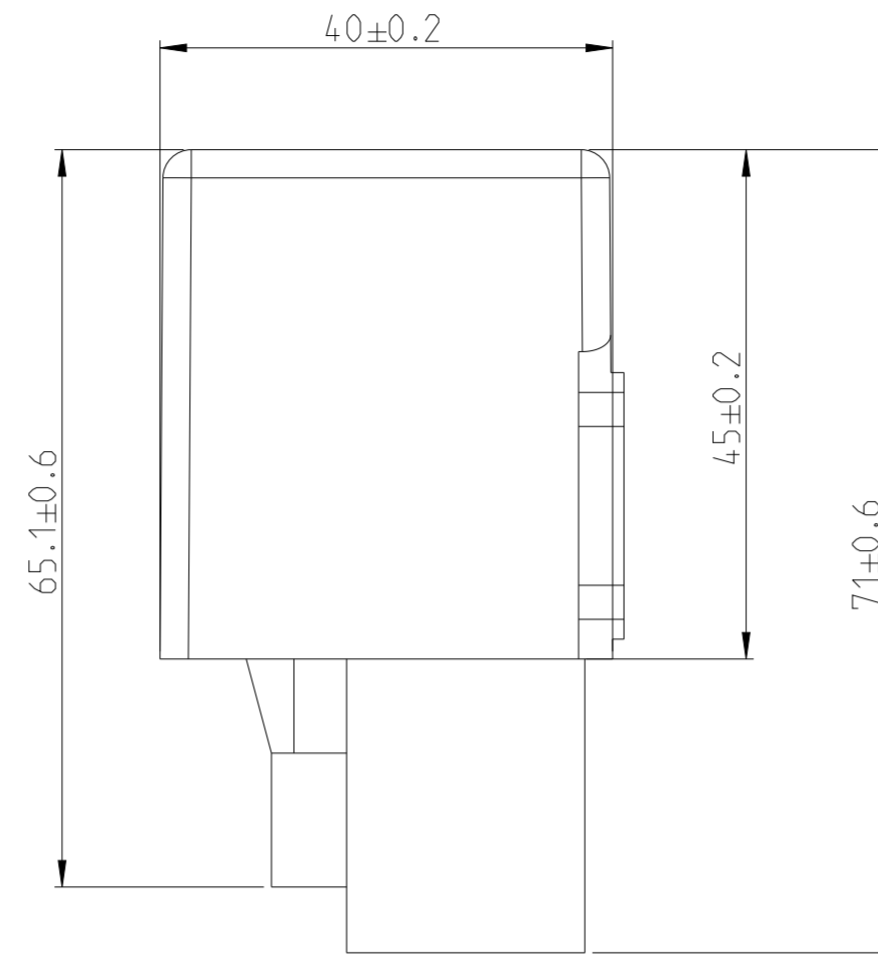
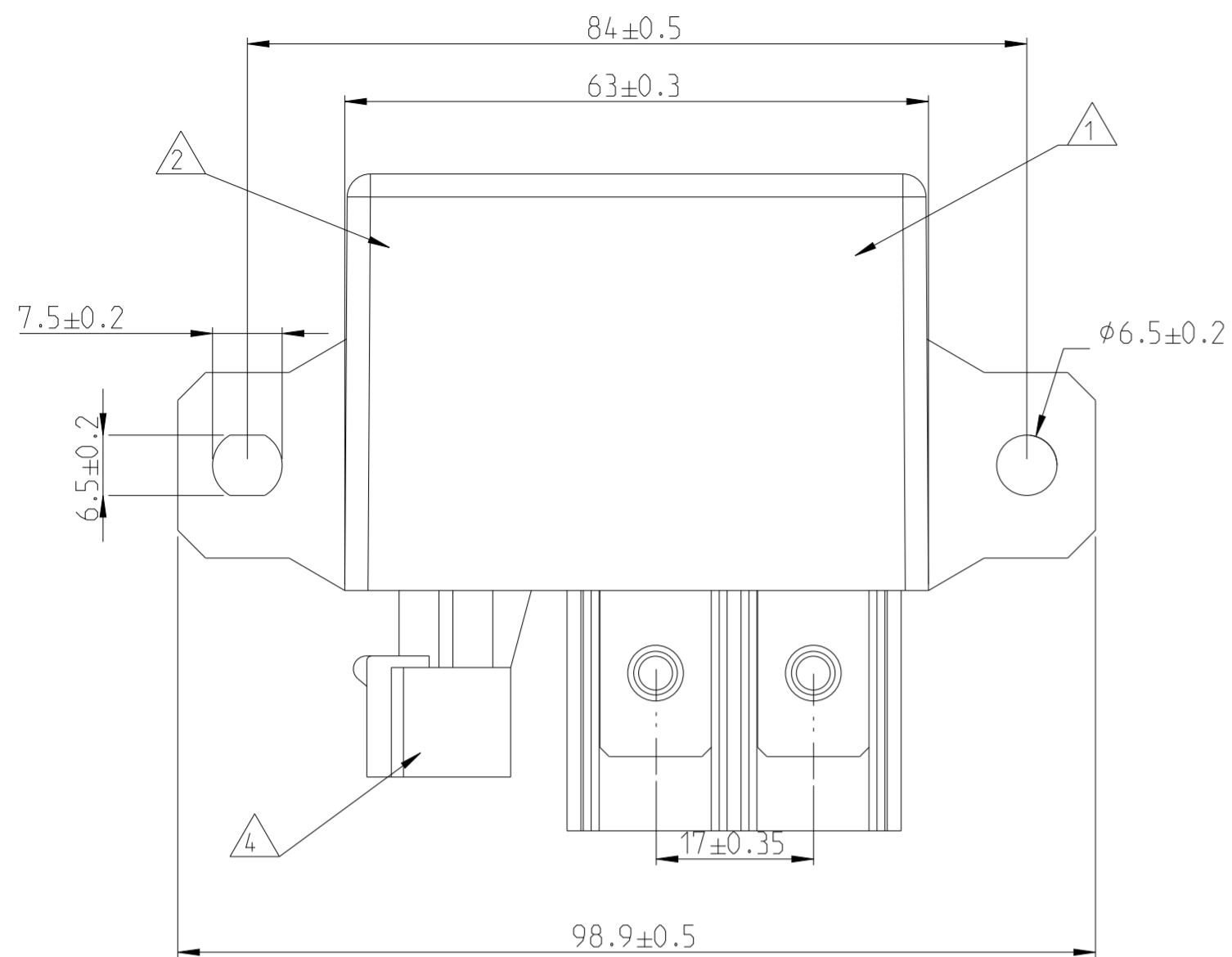
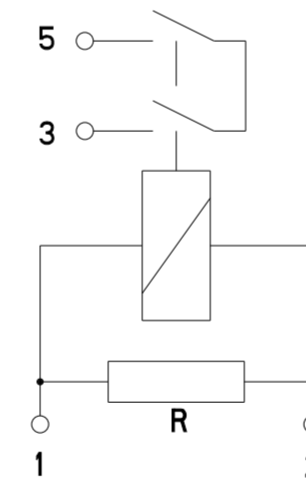


REVISIONS					
P	LTR	DESCRIPTION	DATE	DWN	APVD
A		Initial Release	04MA2011	HMF	-
B		ECN-17-016680	10NOV2017	FS	-
B1		ECN-24-272390	25JUN2024	GL	SBap



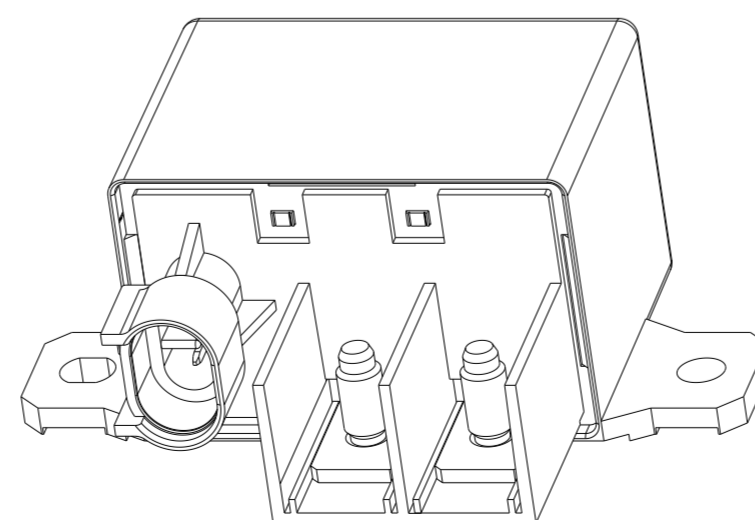
CIRCUIT DIAGRAM



NOTES

- 1 Datecode as ++YYWW (Year and Week), for traceability.
- 2 Cover marking (Printed, Moulded or Lasered) includes: TE Logo and Part Alias, Nominal values and Circuit Diagram.
- 3 Sealed area with Epoxy (IP67)
- 4 Coil Connection: Connector AMP Superseal 1.5 series PN 282080-1
- 5 Load Connection: Cable lug M6, maximum cable section 25 mm²
- 6 Maximum torsion of screw bolts: 5Nm
Higher tightening torques could be applied depending on the used nuts. Needs to be agreed between TE and the customer.

RELAY TE PN	TE PART ALIAS	REV.	Packaging	QTY
1-1393315-1	V23132B2002B200-EV-CBOX	B	Cartoon Box	50
5-1414968-1	V23132B2002B200-EV-USBX	A	Overseas C.Box	50
2489208-1	V23132B2002B200-EV-KLT4315	A	Container	24



THIS DRAWING IS A CONTROLLED DOCUMENT.		DWN G. Lopes 09JUN2023			
DIMENSIONS: mm		CHK S. Baptista 25JUN2024			
TOLERANCES UNLESS OTHERWISE SPECIFIED:		APVD S. Baptista 25JUN2024	NAME HCR150 BRIDGE MAKE 24V		
0 PLC ± 1 PLC ±0.1 2 PLC ±0.01 3 PLC ±0.001 4 PLC ±0.0001 ANGLES ± FINISH -		PRODUCT SPEC -	SIZE A2	CAGE CODE 00779	DRAWING NO C-V23132-B2002-B200
MATERIAL -		APPLICATION SPEC -	WEIGHT 220g	RESTRICTED TO -	SCALE 1:1
CUSTOMER DRAWING			SHEET 1 OF 1	REV B1	