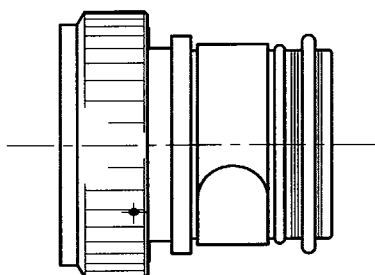


REVISIONS			
LTR	DESCRIPTION	DATE	APPROVED
N/C	INITIAL ISSUE	APR 02	KJW



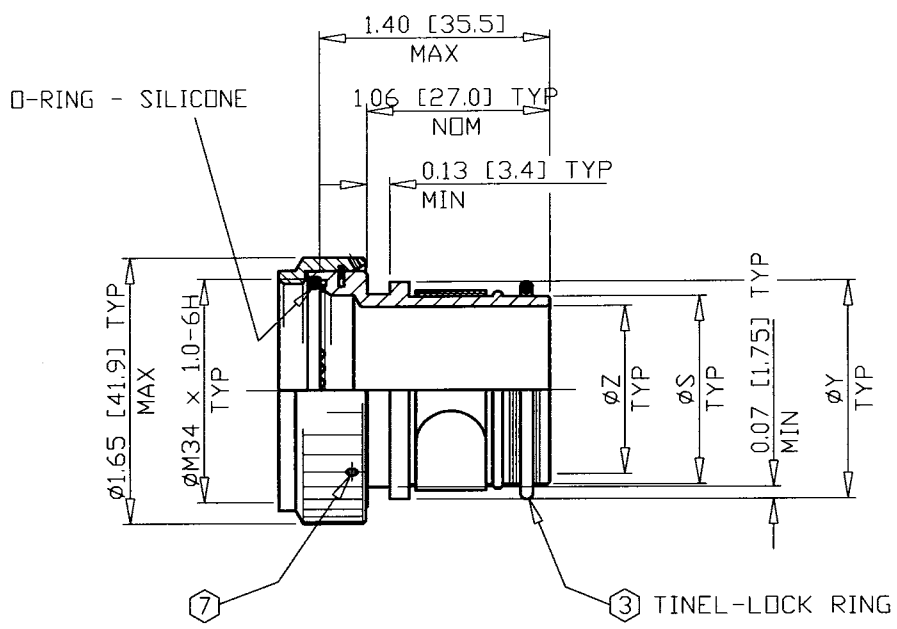
ADAPTOR ASSEMBLIES - 00 AND 90°

NOTES

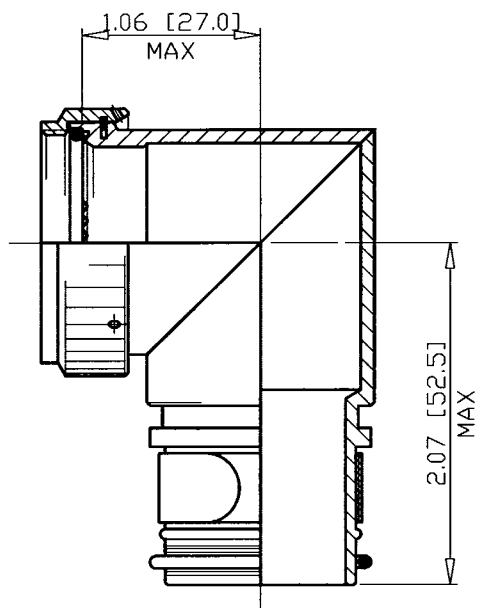
- THIS PRODUCT IS DESIGNED TO TERMINATE BRAIDED CABLE SHIELDS BY MEANS OF BOTH A CONSTANT FORCE SPRING AND A TINEL-LOCK RING, AND A HEAT SHRINKABLE LIPPED BOOT TO A CONNECTOR - SEE NOTE 6.
- SEE SHEETS 2 AND 3 FOR ORDERING INFORMATION AND PART NUMBERING SYSTEM.
- SEE DRAWING TR FOR DETAIL ON TINEL-LOCK RING. RINGS ARE DESIGNED TO BE HEATED ELECTRICALLY. ALL RINGS ARE MARKED WITH THERMOCHROMIC PAINT WHICH CHANGES COLOUR WHEN INSTALLATION TEMPERATURE IS REACHED.
- ADAPTER TO BE PERMANENTLY MARKED WITH CODE IDENTIFICATION NUMBER AND FULL PART NUMBER. (e.g. 06090-TXS135AB00-2216).
- TINEL-LOCK RING IS TO BE SPECIFIED IN PART NUMBER WHEN ORDERING.
- ADAPTOR MATES TO: MIL-C-38999 SERIES III AND IV, CLAS C, F, K AND W, D38999/20, /24, /26, /40, /46 AND /47, AND BS9520 G003 C617\* CONNECTORS. WHEN SO MATED SHALL PROVIDE A WATER TIGHT SEAL MEETING THE REQUIREMENTS OF MIL-C-85049, PARA. 3.5.7.
- COUPLING NUT SHALL HAVE 3 LOCK-WIRE HOLES, 120° APART..
- FOR ALTERNATIVE MATERIALS AND PLATING FINISHES CONTACT TYCO/RAYCHEM.

SPECIFICATION CONTROL DRAWING

UNLESS OTHERWISE SPECIFIED DIMENSIONS ARE IN INCHES. METRIC DIMENSIONS ARE IN BRACKETS.  DECIMALS .X ± --- [ mm] .XX ± --- [ mm] .XXX ± --- [ mm]  ANGLES .X ± ---	DRAWN IRT	DATE APR 02			
	CHECKED KJW	DATE APR 02			
	APPROVED KJW	DATE APR 02	SIZE A4		
	APPROVED KJW	DATE APR 02			
CAD NAME 85151		DWG. NO. TXS135		REV. N/C	
THIRD ANGLE PROJECTION		DO NOT SCALE THIS DWG			SHEET 1 OF 3



ADAPTOR ASSEMBLY - 00



ADAPTOR ASSEMBLY - 90°

TABLE I

ENTRY SIZE	$\phi Z$	$\phi S$	$\phi Y$
	+0.010 -0.020 [+0.25] [-0.50]		$\pm 0.015$ [ $\pm 0.38$ ]
16	1.000 [25.40]	1.127 [28.63] 1.116 [28.34]	1.300 [33.02]

SIZE	CODE IDENT. NO.	DWG. NO.	REV
A4	06090	TXS135	N/C
DO NOT SCALE THIS DWG		SHEET 2 OF 3	

PART NUMBERING SYSTEM

TXS 135 A B 00 - 22 16 A I

PREFIX

SEQUENTIAL NUMBER

MATERIAL (SEE CH00-0250-008)  
A = ALUMINIUM ALLOY

FINISH (SEE S-CH00-0157-002)  
B = CADMIUM PLATE, OLIVE DRAB  
C = ELECTROLESS NICKEL

CONFIGURATION  
00 = STRAIGHT, 90 = 90°

⑥ ORDER NUMBER: 22 = H MIL/23 COMML

ENTRY SIZE (SEE TABLE D)

BRAID DESIGNATOR  
A = SINGLE LAYER 36 AWG

I = RING WITH INSULATING LINING

SIZE	CODE IDENT. NO.	DWG. NO.	REV
A4	06090	TXS135	N/C
DO NOT SCALE THIS DWG		SHEET 3 OF 3	