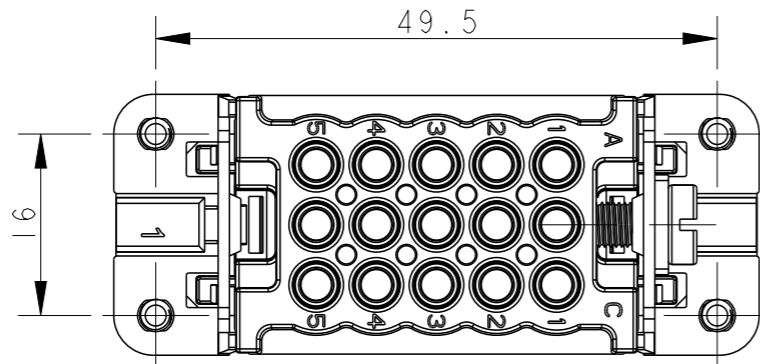
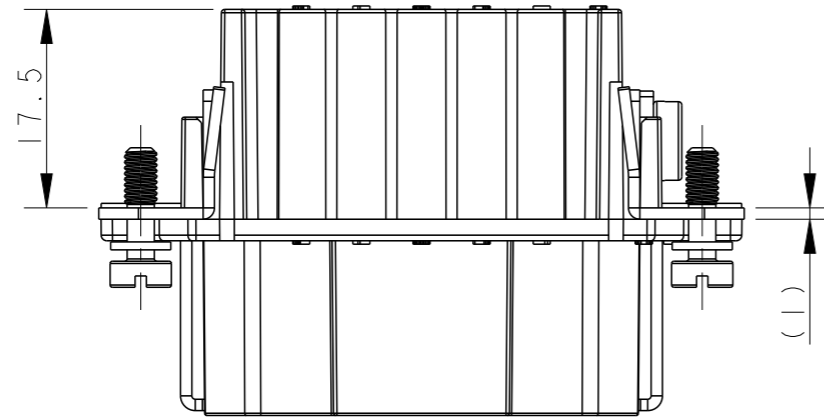
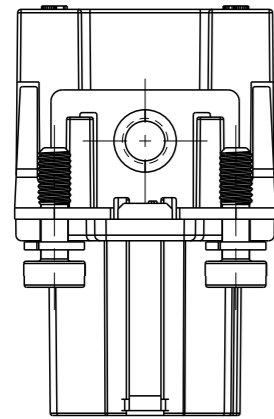


REVISIONS

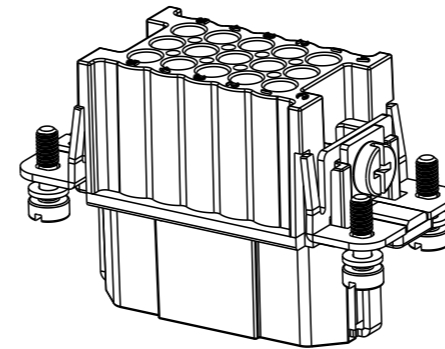
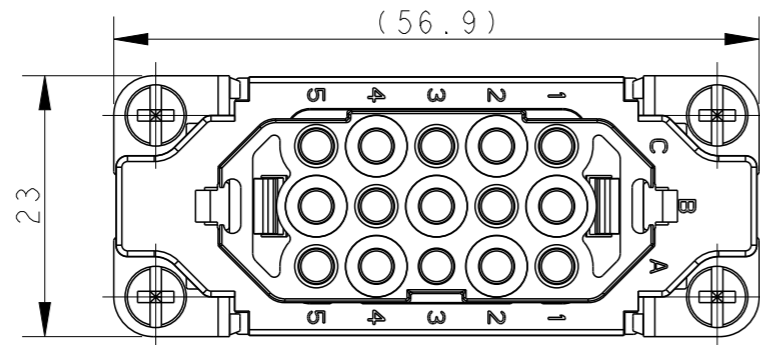
P	LTR	DESCRIPTION	DATE	DWN	APVD
	A	INITIAL	30MAR2017	QY	CW
	AI	ECR-22-142297	13JUN2022	AC	CW



M4 SCREW, RECOMMENDED TIGHTENING TORQUE 1.2Nm
M4 螺丝, 推荐锁紧力矩 1.2Nm



4X M3 SCREW, RECOMMENDED TIGHTENING TORQUE 0.5Nm
4X M3 螺丝, 推荐锁紧力矩 0.5Nm



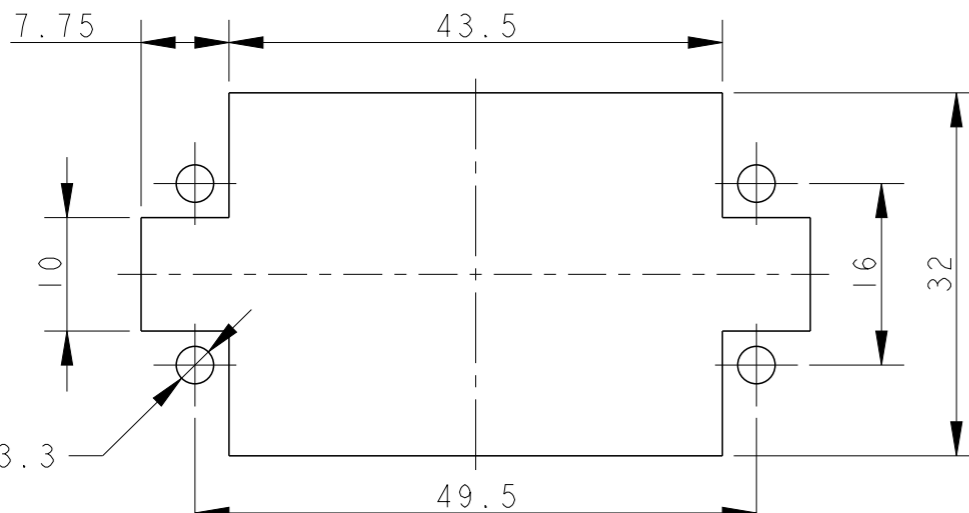
SCALE 1:1

NOTES:

- TECHNICAL CHARACTERISTICS:
INSULATION MATERIAL: PC
RATED VOLTAGE: 250 V
RATED CURRENT: 10 A
INSULATION RESISTANCE: $\geq 400M\Omega$
RATED IMPULSE VOLTAGE: 4 KV
POLLUTION DEGREE: 3
FLAMMABILITY: UL94V-0
MATING CYCLES: 500 CYCLES
WIRE RANGE: 0.14-2.5 mm² (26-14 AWG)
CONTACT TYPE: CRIMP CONTACT
- CONTACT NEED TO BE ORDERED SEPARATELY.
(ORDER No. REFER TO DRAWING: T20200X20XX000)

注释:

- 技术参数:
绝缘材料: PC
额定电压: 250V
额定电流: 10A
绝缘电阻: $\geq 400M\Omega$
额定脉冲电压: 4 KV
污染等级: 3
阻燃等级: UL94V-0
插拔次数: 500次
接线范围: 0.14-2.5 mm² (26-14 AWG)
接线类型: 冷压接
- 端子需要单独订购.
(订货号参考图面: T20200X20XX000)



PANEL CUT OUT FOR INSERTS FOR USING WITHOUT HOODS/HOUSINGS
不使用防护外壳时芯件的安装开孔图

T2020152201-001	HD-015-F	HD-015 FEMALE INSERT, STAINLESS STEEL SCREW, NO LOGO HD-015母插, 不锈钢螺丝, 无LOGO
PART NUMBER 料号	PART DESCRIPTION 描述	

THIS DRAWING IS A CONTROLLED DOCUMENT.	
DIMENSIONS: mm	TOLERANCES UNLESS OTHERWISE SPECIFIED:
	0 PLC ±-
	1 PLC ±-
	2 PLC ±-
	3 PLC ±-
	4 PLC ±-
	ANGLES ±-
MATERIAL	FINISH
-	-
-	-

DWN	30MAR2017
CHK	QIANG YUAN
APVD	30MAR2017
APVD	GINO YAO
APVD	CHRIS WANG
PRODUCT SPEC	108-137042
APPLICATION SPEC	114-137042
WEIGHT	-
CUSTOMER DRAWING	

TE Connectivity		NAME		HD-015-F
		SIZE	CAGE CODE	DRAWING NO
A3		-	©-T2020152201001	
SCALE		3:2	SHEET	1 OF 1
REV		AI		