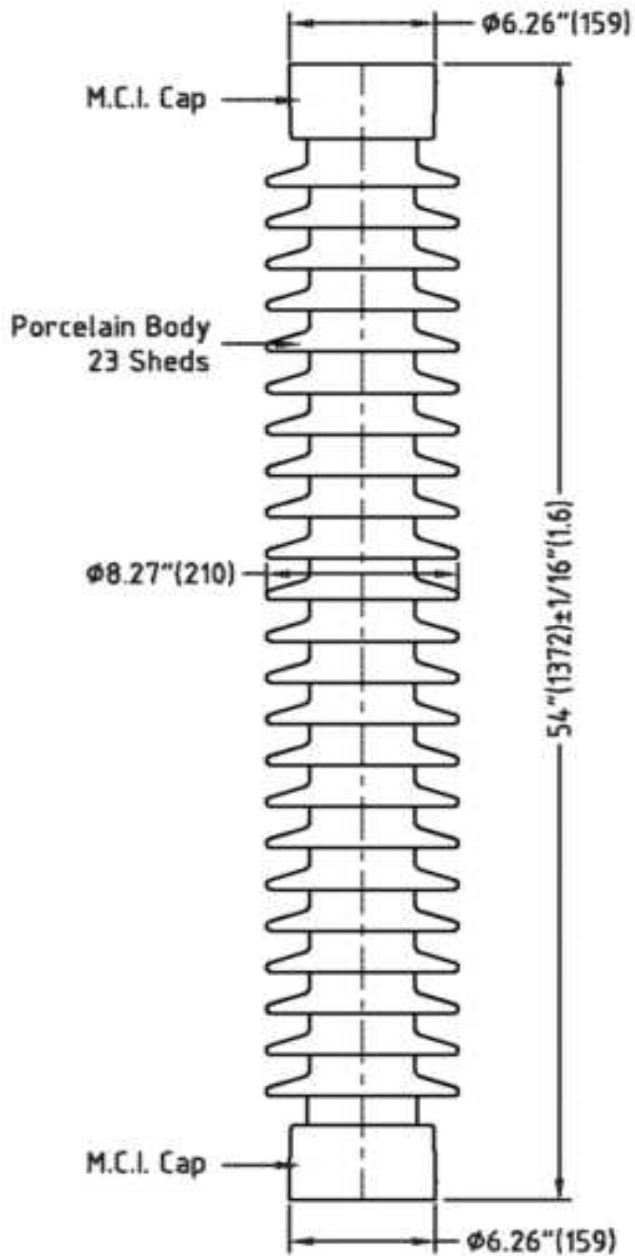
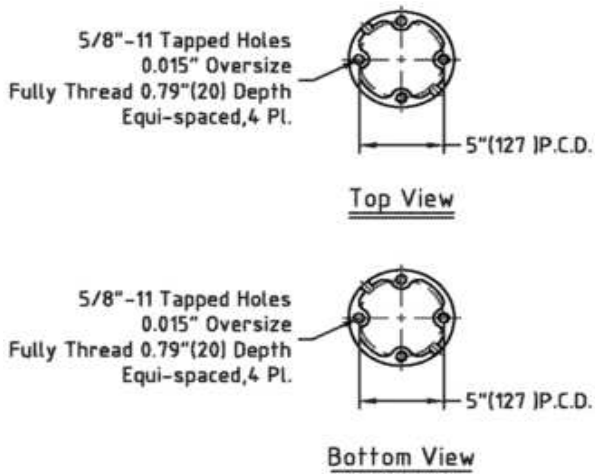


- Notes:** 1. All ferrous parts hot-dip galvanised
 2. Mark on porcelain:



TR 288
 6kN BIL 650kV
 Month Year



ELECTRICAL PROPERTIES

Impulse Withstand Voltage (kV)	650
Wet Power Frequency Withstand (kV)	275
Critical Impulse Flashover Voltage, Pos. (kV)	710
Radio-Influence Voltage	
Test Voltage to Ground (kV)	88
Max RIV at 1000kHz (µV)	200
Nominal Creepage Distance (inch/mm)	116 2946

MECHANICAL PROPERTIES

Tension Strength (lb/kN)	20000	89
Compression Strength (lb/kN)	60000	267
Torsion Strength (in-lb/N-m)	60000	6780
Cantilever Strength (lb/kN)	1450	6.4

PHYSICAL PROPERTIES

Length (inch/mm)	54	1372
Shed Diameter (inch/mm)	8.27	210
Nett Weight (lb/kg)	154	70
Colour	Light Grey	

COMPONENT LIST

Number of units in stack	1
--------------------------	---

Test Standard ANSI C29.1

Reference Standard ANSI C29.9
 Designation SP-TR288PG
 TCPN EE3506-000



This document is the property of TE Connectivity and must not be copied or reproduced without written permission, nor disclosed to any third party.