

# POTTER & BRUMFIELD SOCKETS & ACCESSORIES, KUP RELAYS

## GENERAL PURPOSE ACCESSORIES

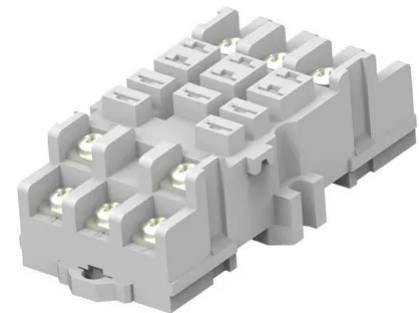
### INTRODUCTION

Relay accessories are devices to support the design and maintenance of relays in electrical circuits. This relay series include clips, mounting adapters and sockets. Mounting adapters provide adaptation between standard socket types. Sockets are used for relay mounting in configurations, including panel mount, PCB types and DIN rail and clips are used to secure the relay in the connector.



### FEATURES

- Sockets for 1 - 3 pole relays with .187" (4/75mm) quick connects
- Solder, PCB or screw terminal sockets
- Hold down springs
- Various mounting options



### APPROVALS

- UL E59244
- CSA LR15734



Technical data of approved types on request.

### TECHNICAL DATA

Socket contact material	Spring brass, tin plated
Socket body material	
Solder, PCB and QC terminal models	Nylon
Screw terminal models - 3 pole	Glass-filled polyester
Maximum current	15A (300 VAC) 10A (300 VAC) for 27E893

# Potter & Brumfield Sockets & Accessories, KUP Relays

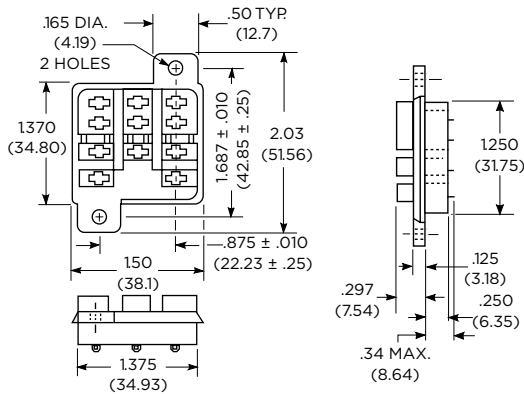
## DIMENSIONS: Inch(mm)

### Hard Mount Sockets For Relays Through 3 Poles

Sockets with .187" (4.75mm) quick connect, solder or printed circuit terminals are available for KUEP, KUL, KUMP and KUP relays, through 3 poles, with .187" (4.75mm) quick connect terminals.

27E043-with solder eyelet terminals.

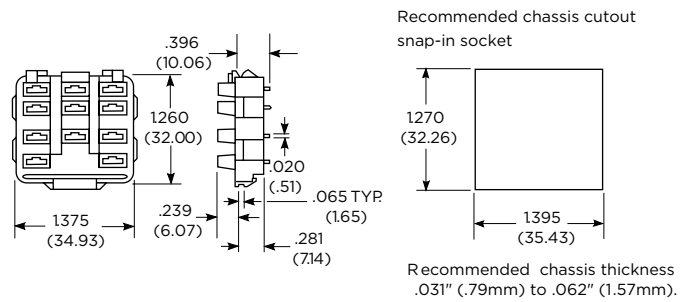
27E067-with .187" (4.75mm) quick connect terminals.



### Snap-in Socket For Relays Through 3 Poles

Socket with .187" (4.75mm) quick connect terminals is available for KUEP, KUL, KUMP and KUP relays, through 3 poles, with .187" (4.75mm) quick connect terminals.

27E396-with .187" (4.75mm) quick connect terminals.

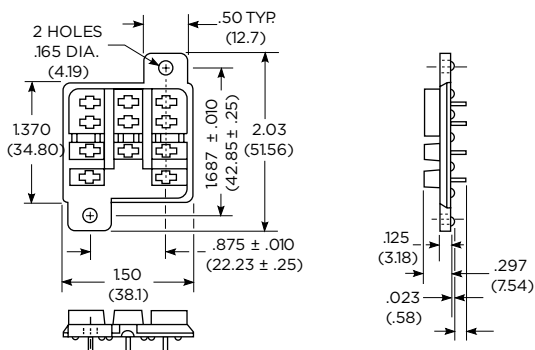


### PCB Hard Mount Sockets For Relays Through 3 Poles

Sockets with .144" (3.66mm) and .184" (4.67mm) long solder PCB/Solder terminals are available for KUEP, KUL, KUMP and KUP relays,

27E046-with .144" (3.66mm) long PCB/Solder terminals.

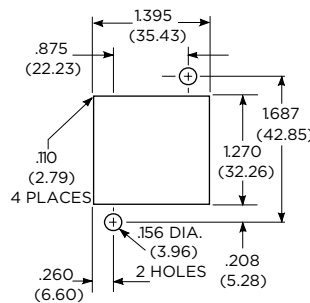
27E305-with .184" (4.67mm) long PCB/Solder terminals.



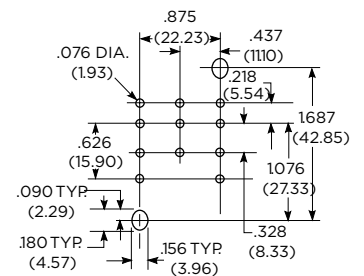
### Caution:

Printed circuit sockets are manufactured with "floating" (Loose) terminals. This permits them to align with holes in the circuit board and with the relay terminals. During the mounting and soldering of the socket, vertical float should be eliminated and the terminals seated on the board. (This may be accomplished by inserting a dummy relay in the socket.) Failure to eliminate float may cause fracture of the solder joint or separation of the copper conductor from the printed circuit board when a relay is inserted in the socket after soldering.

Recommended chassis cutout for solder terminal socket



PCB layout for 3 pole PCB terminal socket

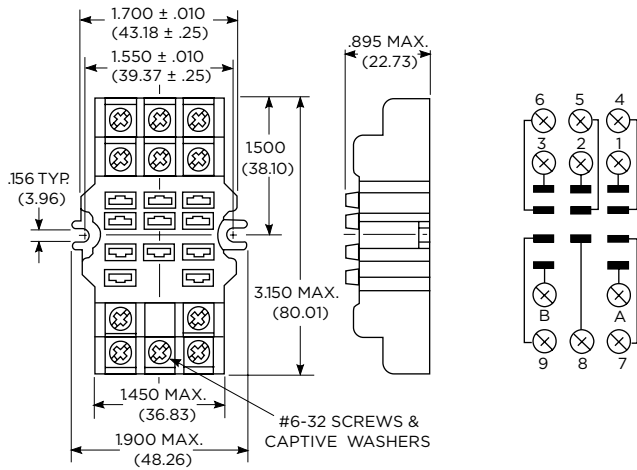


Recommended Chassis Thickness  
.031 (.79) to .062 (1.57)

# Potter & Brumfield Sockets & Accessories, KUP Relays

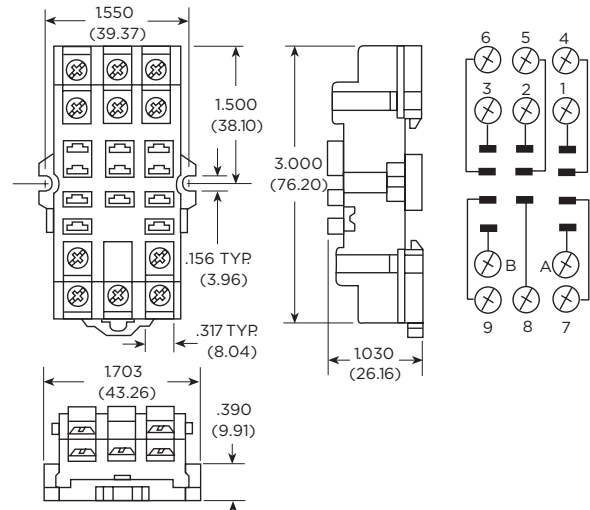
## Screw terminal socket for relays through 3 poles 27E121

Offers screw termination for KUEP, KUL, KUMP and KUP relays, through 3 poles, with .187" (4.75mm) quick connect terminals. This socket stacks on 1.700" (43.18mm) centers. When surface mounting, two #6-32 screws of suitable length are required. When track mounting, two 24A071 retainer clips (not shown) are required.



## Screw terminal, DIN rail, snap-mount socket 27E893

Offers screw termination for KUEP, KUL, KUMP and KUP relays, through 3 poles, with .187" (4.75mm) quick connect terminals. This socket is constructed with a spring-loaded latch which allows it to be quickly snapped onto or removed from a DIN or "top hat" style mounting track. No special tools or extra hardware is required for installation.



## ORDERING CODE FOR SOCKETS

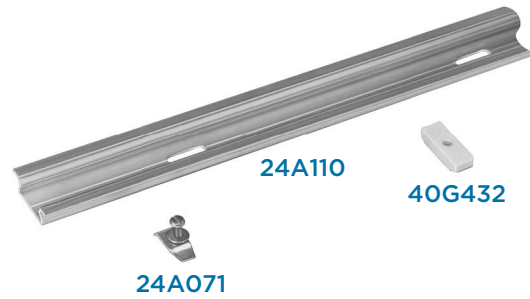
Product Code	Poles	Terminal type	Mounting	Rating	Part number
27E043	3	Solder eyelet	Hard mount	15A	<a href="#">1393143-1</a>
27E067	3	.187 in (4.75) quick connect	Hard mount	15A	<a href="#">1393143-2</a>
27E046	3	PCB/Solder .144 in (3.66) long	Hard mount	15A	<a href="#">1419106-4</a>
27E305	3	PCB/Solder .184 in (4.67) long	Hard mount	15A	<a href="#">3-1393143-2</a>
27E396	3	.187 in (4.75) quick connect	Snap-in	15A	<a href="#">3-1393143-8</a>
27E121	3	Screw	Panel/rail	15A	<a href="#">1393143-5</a>
27E893	3	Screw	DIN-rail	10A*	<a href="#">2-1419106-5</a>

All accessories must be ordered separately.

Recommended installation torque for terminal screws is 7.5 in-lb.

\*Rating is per pole with a maximum total rating per device of 20 A, 300 V or 30 A, 150 V.

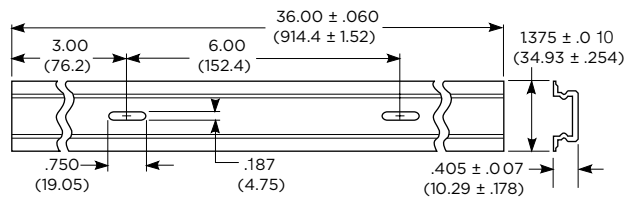
## TRACK AND MOUNTING ACCESSORIES



### DIMENSIONS: Inch(mm)

#### 24A110 DIN rail style mounting track

24A110 mounting track is designed to accept snap-mount sockets, as well as other P&B screw terminal sockets. Track is made of lightweight, sturdy extruded aluminum and is shipped in three-foot (914cm) lengths with mounting holes on six-inch (152mm) centers. Track can be cut to shorter lengths or used end-to-end.



#### End Clip

24A071 steel mounting clip with one #6-32 screw 7/16" (11.1 mm ) long is used with a 40G432 insulator to prevent sockets form moving sideways or sliding off the end of the track.

### ORDERING CODE FOR ACCESSORIES

Product Code	Terminal type	Part number
20C254	Snap-in relay hold down spring for use with all KUP sockets listed on these pages except 27E396 ,27E121 and 27E893.	<a href="#">3-1393159-9</a>
20C228	Relay hold down spring for use with hard mount KUP sockets. Is held in place by socket mounting hardware.	<a href="#">1419111-3</a>
20C318	Relay hold down spring for use with 27E893 DIN rail screw terminal socket	<a href="#">4-1393159-8</a>
20C314	Relay hold down clip for use with 27E121 screw terminal socket. 2 required per socket.	<a href="#">4-1393159-6</a>
24A110	Mounting track	<a href="#">1419111-6</a>
24A071	Steel mounting clip with #6-32 screw - use with 27E166 on 24A110 track	<a href="#">1419111-5</a>
40G432	Plastic insulator - use with 24A071 to make end clip for 24A110 track	<a href="#">9-1393159-5</a>

All accessories must be ordered separately.

### te.com

©2024 TE Connectivity Ltd. Family of Companies. All Rights Reserved.

TE Connectivity, TE connectivity (logo) and Every Connection Counts are trademarks owned or licensed by the TE Connectivity family of companies. All other logos, products and/or company names referred to herein might be trademarks of their respective owners.

While TE has made every reasonable effort to ensure the accuracy of the information in this document, TE does not guarantee that it is error-free, nor does TE make any other representation, warranty or guarantee that the information is accurate, correct, reliable or current. TE reserves the right to make any changes to the information contained herein without prior notice. TE Connectivity assumes only those obligations set forth in the terms and conditions for this product and shall in no event be liable for any incidental, indirect, or consequential damages arising out of the sale, resale, use, or misapplication of the product. TE expressly disclaims any implied warranties with respect to the information contained herein, including, but not limited to, implied warranties of merchantability or fitness for a particular purpose. Dimensions, specifications and/or information contained herein are for reference purposes only and are subject to change without notice. Consult TE for the latest dimensions, specifications and/or information. Users of TE Connectivity products must make their own assessment as to whether the respective product is suitable for the respective desired application.

04/24 ED