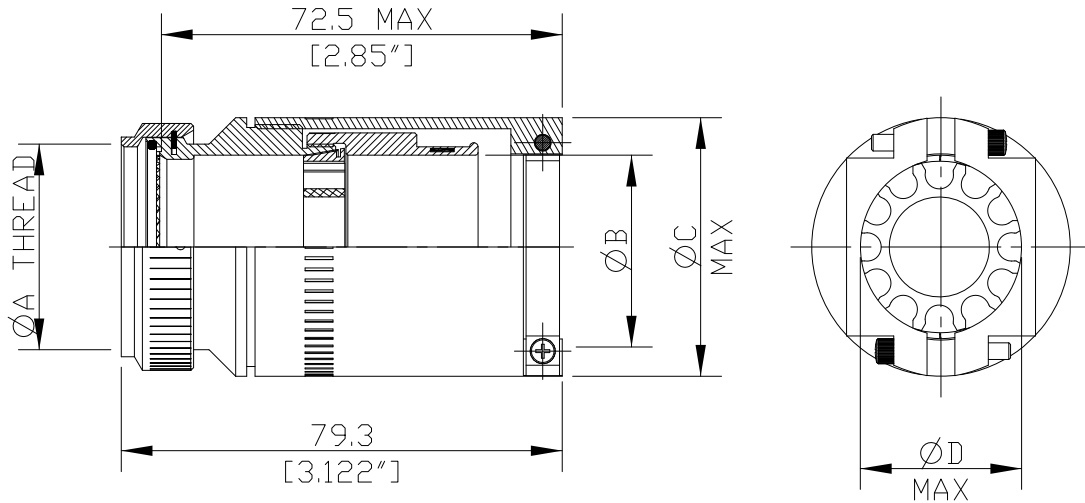
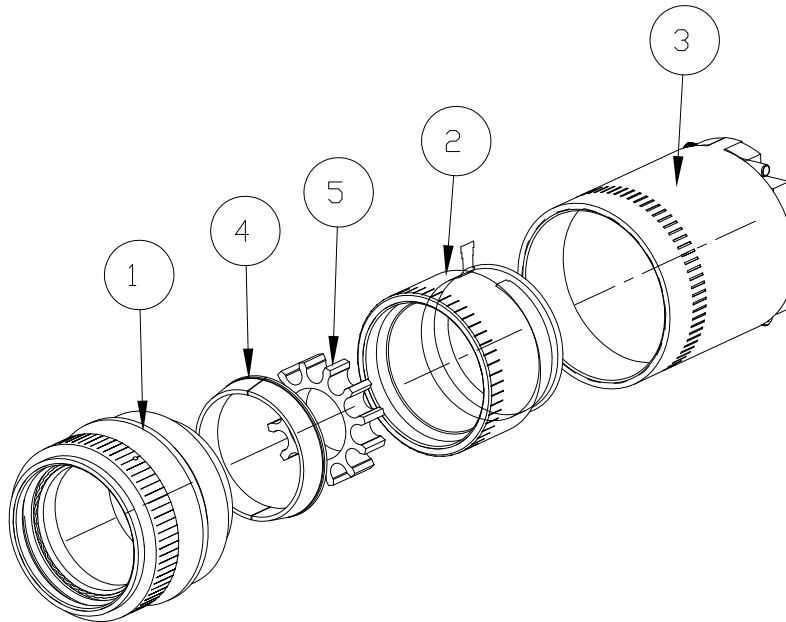


DIMENSIONING AND TOLERANCING PER ASME Y14.5M (ISO STANDARDS)

LDC		DIST		REVISIONS			
P	LTR	DESCRIPTION	DATE	DWN	APVD		
-	-	C	UPDATED PER ECO-12-009406	05/02/12	DJ	IM	
-	-	B	UPDATED	01/2006	-	-	
-	-	A	DCR # D030133	03/12/03	IRT	-	
-	-	-	-	-	-	-	






STRAIGHT ADAPTER - 00

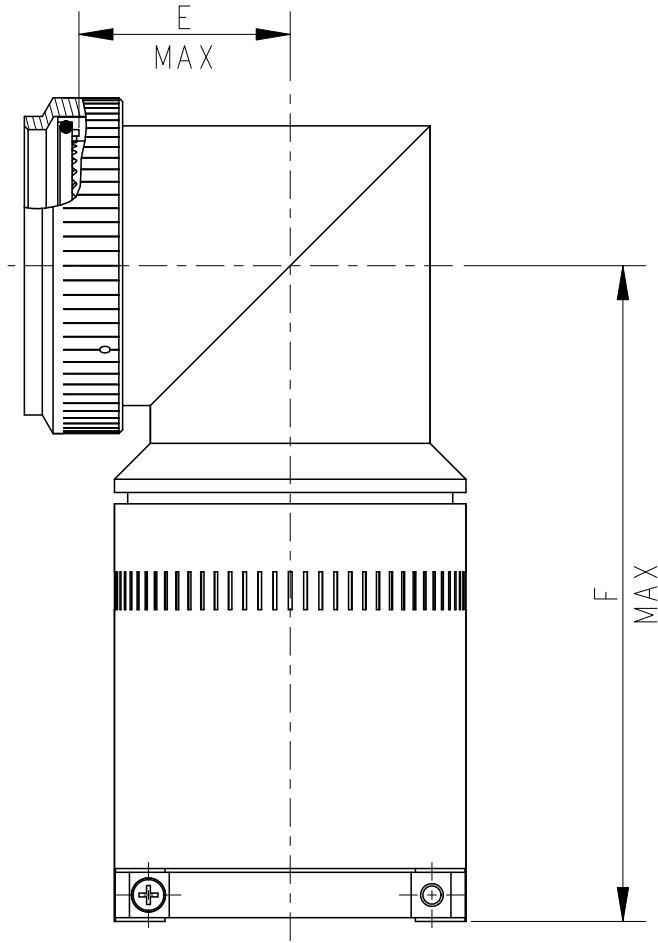


RAYCHEM ADAPTERS
CUSTOMER DRAWING

THIS DRAWING IS UNPUBLISHED.
 RELEASED FOR PUBLICATION
 © COPYRIGHT 2003-2012 BY TYCO ELECTRONICS CORPORATION. ALL INTERNATIONAL RIGHTS RESERVED.

DIMENSIONS: mm[INCH]	DWN	NIKHIL C	26-APR-12	MATERIAL	-	FINISH	-
	CHK	D JAIN	26-APR-12	 TE Connectivity			
TOLERANCES UNLESS OTHERWISE SPECIFIED:	APVD	INH MYONG	26-APR-12				
0 PLC ±0.5[0.019]	PRODUCT SPEC	-	-	NAME HEXASHIELD ADAPTER BANDSTRAP CLAMPING NUT			
1 PLC ±0.1[0.003]	APPLICATION SPEC	-	-	SIZE	A	CAGE CODE	-
2 PLC ±0.05[0.001]	WEIGHT	-	-	DRAWING NO	C=HXS109-AB-YY-YY-YY/YY-AYY-3DS		
3 PLC ±-	CUSTOMER DRAWING	SCALE		1:1	SHEET	1	OF
4 PLC ±-		RESTRICTED TO		-			
ANGLES ±0.5°	CUSTOMER DRAWING		SCALE	1:1	SHEET	1	OF
	CUSTOMER DRAWING		SCALE	1:1	SHEET	1	OF
	CUSTOMER DRAWING		SCALE	1:1	SHEET	1	OF

REVISIONS			
LTR	DESCRIPTION	DATE	APPROVED
-	SEE SHEET 1	-	-



90° ADAPTER - 90

KIT DESCRIPTION

ITEM	DESCRIPTION	MATERIAL
1	BODY ASSEMBLY	ALUMINIUM ALLOY
2	CLAMPING NUT ASSEMBLY - BANDSTRAP	ALUMINIUM ALLOY/S.STEEL
3	CABLE CLAMP NUT ASSEMBLY	ALUMINIUM ALLOY/S.STEEL
4	CONIC RING	ALUMINIUM ALLOY
5	DRILLED STAR	ALUMINIUM ALLOY

RAYCHEM ADAPTERS
CUSTOMER DRAWING

SIZE A	CAGE CODE: 06090	DWG. NO. C-HXS109-AB-YY-YY/YY-AYY-3-DS	REV C
SCALE: 1:1		SHEET 2 OF 5	

REVISIONS			
LTR	DESCRIPTION	DATE	APPROVED
-	SEE SHEET 1	-	-

TABLE OF DIMENSIONS

Order No.	HEX Entry Size	Shell Size		A Thread Class 6H	ØB Max	ØC Max	ØD Max	E max	F max	Ferrule Qty.	
		Mil	Com							Std.	Opt.
13	A3	C	13	M25 x 1.0	15.0 [0.591"]	27.5 [1.083"]	14.5 [0.571"]	17.70 [0.697"]	77.25 [3.041"]	3	-
15	A5	D	15	M28 x 1.0	18.0 [0.709"]	30.5 [1.201"]	17.5 [0.689"]	19.20 [0.756"]	78.75 [3.100"]	5	-
17	A6	E	17	M31 x 1.0	21.0 [0.827"]	33.5 [1.319"]	20.5 [0.807"]	20.70 [0.815"]	80.25 [3.159"]	6	7
19	A7	F	19	M34 x 1.0	24.0 [0.945"]	36.5 [1.437"]	23.5 [0.923"]	22.20 [0.874"]	81.75 [3.219"]	7	8
21	A9	G	21	M37 x 1.0	27.0 [1.063"]	39.5 [1.555"]	26.5 [1.043"]	24.95 [0.982"]	83.75 [3.297"]	9	11
23	10	H	23	M42 x 1.0	30.0 [1.181"]	44.5 [1.752"]	29.5 [1.240"]	26.45 [1.041"]	85.25 [3.356"]	10	13
25	A12	J	25	M44 x 1.0	33.0 [1.299"]	46.5 [1.831"]	33.0 [1.319"]	27.95 [1.100"]	86.75 [3.415"]	12	18

RAYCHEM ADAPTERS
CUSTOMER DRAWING

If this document is printed it becomes uncontrolled. Check for the latest revision

SIZE A	CAGE CODE: 06090	DWG. NO. C=HXS109-AB-YY-YY/YY-AYY-3-DS	REV C
SCALE: 1:1		SHEET 3 OF 5	

REVISIONS			
LTR	DESCRIPTION	DATE	APPROVED
-	SEE SHEET 1	-	-

PART NUMBERING

HXS109 - A B - 00 - YY - AYY - 3 - DS

- SEQUENTIAL NUMBER
SEE APPLICATION FOR MATING .
CONNECTOR INFORMATION.
- MATERIAL CODE:
A = ALUMINIUM ALLOY
- PLATING CODE:
B = CADMIUM OLIVE DRAB TO QQ-P-416
- BODY STYLE
00 = STRAIGHT OUTLET
- ORDER NUMBER
- FERRULE QUANTITY
- 3 = BAND STRAP CLAMPING NUT
- DS = DRILLED STAR - SEE NOTE 1

APPLICATIONS

- THESE ADAPTERS ARE DESIGNED TO BE MOUNTED ON THE FOLLOWING CONNECTORS:
MIL-C-38999 SERIES III & IV SHELL SIZES C(13) TO J(25)
- THEY ARE QUALIFIED TO RAYCHEM SPECIFICATION RB-114, WHEN INSTALLED ON THE METALLIC MIL-SPECIFICATION CIRCULAR CONNECTORS ONLY.
- THEY ARE DESIGNED PRIMARILY FOR OPEN WIRE BUNDLE INSTALLATION HAVING AN OVERALL BRAID.
- USE IN CONJUNCTION WITH THE FERRULES HET-A-*** WHICH ARE PURCHASED SEPARATELY. REFER TO HET-A-*** S.C.D'S FOR RELEVANT SECTION DETAILS.

INSTALLATION

- SEE INSTALLATION PROCEDURE RPIP-696-04

PACKAGING

- ALL COMPONENTS ARE SUPPLIED IN A PLASTIC BAG.

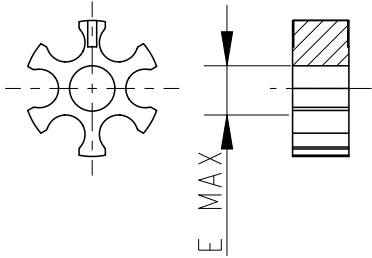
RAYCHEM ADAPTERS
CUSTOMER DRAWING

SIZE A	CAGE CODE: 06090	DWG. NO. C-HXS109-AB-YY-YY/YY-AYY-3-DS	REV C
SCALE: 1:1		SHEET 4 OF 5	

REVISIONS			
LTR	DESCRIPTION	DATE	APPROVED
-	SEE SHEET 1	-	-

NOTES :

1. THE DS DESCRIPTION, ILLUSTRATED BELOW, IS FOR A DRILLED STAR THAT ALLOWS UN-SHIELDED WIRES TO PASS THROUGH THE ASSEMBLY.

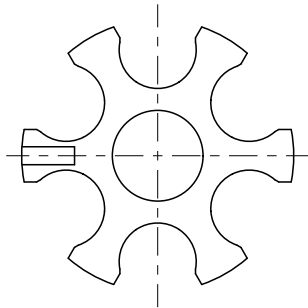


STAR SIZE	15	17	19	21	23	25
Ø E MAX	3.0 [0.12"]	6.0 [0.24"]	9.0 [0.35"]	12.0 [0.47"]	15.0 [0.59"]	18.0 [0.71"]

2. WHEN FERRULE QUANTITY REQUIRED IS STANDARD THEN ITEM 5 (STAR) ALSO, WILL BE STANDARD. IF THE OPTIONAL QUANTITY IS SELECTED, THEN TWO ITEM 5 WILL BE SUPPLIED (1 SPLIT STAR AND 1 STANDARD STAR)

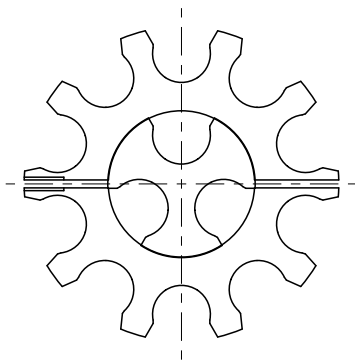
EXAMPLE: FERRULE QTY. CODE - A7

-A7= -A6 SPLIT STAR WITH BORE TO ACCEPT FERRULE



EXAMPLE: FERRULE QTY CODE : -A13

-A13 = -A10 SPLIT STAR + -A3 STANDARD STAR.



3. ASSEMBLY IS TO BE PERMANENTLY MARKED WITH CODE IDENTITY NUMBER AND PART NUMBER. (e.g. 06090-HXS109-AB-00-XX-XXX-X-XX)

RAYCHEM ADAPTERS
CUSTOMER DRAWING

If this document is printed it becomes uncontrolled. Check for the latest revision

SIZE A	CAGE CODE: 06090	DWG. NO. C-HXS109-AB-YY-YY/YY-AYY-3-DS	REV C
SCALE: 1:1		SHEET 5 OF 5	