

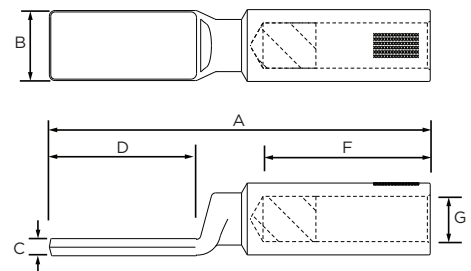
UTILUX BI-METAL LONG PALM LUGS



Copper to aluminium terminations can be made with the Utilux range of Bi-Metal products. Under normal conditions, when copper comes into contact with aluminium electrolytic corrosion may result, enhanced by the presence of oxygen. Utilux Bi-metal lugs have the copper friction welded to the aluminium. The friction welding process eliminates the presence of oxygen and therefore eliminates electrolytic corrosion. The welding process also maximises the strength of the joint.

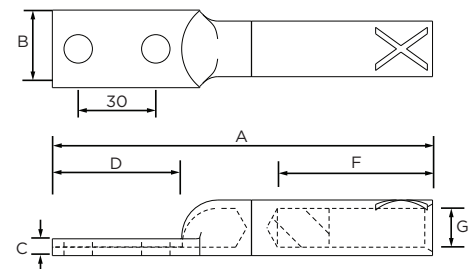
BLANK PALM PRODUCT SELECTION INFORMATION

Catalogue Number	Conductor Area (mm ²)	Dimensions (mm)						Crimping Die
		A	B	C	D	F	G	
BG240LPMB	240	208	49	12	103	60	49	38-284AL, 40-283AL
BG300LPMB	300	208	49	12	103	60	49	38-284AL, 40-283AL
BG400LPMB	400	220	49	12	103	70	49	40-390AL
BG500LPMB	500	220	49	12	103	70	49	40-390AL
BG630LPMB	630	220	49	12	103	70	49	40-432AL
BG800LPMB	800	265	49	12	103	115	49	40-432AL



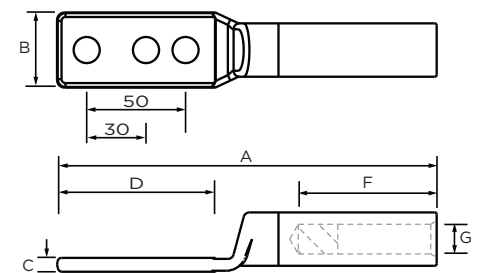
2 HOLE PALM PRODUCT SELECTION INFORMATION

Catalogue Number	Conductor Area (mm ²)	Stud Size	Dimensions (mm)						Crimping Die
			A	B	C	D	F	G	
BG35LPM10-30	35	M10	113	22	5	50	32	8.5	38-132AL
BG80LPM10-30	80	M10	157	30	6.5	50	60	12.5	38-173AL, 40-172AL
BG95LPM12-30	95	M12	157	30	6.5	50	60	13	38-173AL, 40-172AL
BG120LPM10-30	120	M10	157	30	6.5	50	60	15	38-173AL, 40-172AL
BG150LPM12-30	150	M12	160	38	7	50	60	16.5	38-220AL, 40-220AL



3 HOLE PALM PRODUCT SELECTION INFORMATION

Catalogue Number	Conductor Area (mm ²)	Stud Size	Dimensions (mm)						Crimping Die
			A	B	C	D	F	G	
BG120LPM12-30-50	120	M10	192	38	7	80	70	15	38-220AL
BG180LPM12-30-50	180	M12	192	38	7	80	70	19.3	38-220AL



Hole sizes and centres can be made to order.
Stud size MB means blank palm.

te.com/energy

©2016 TE Connectivity Ltd. family of companies. All Rights Reserved. EPP-2487-DDS29-AU-2/16

Utilux, TE Connectivity and TE Connectivity (logo) are trademarks. Other logos, product and/or company names might be trademarks of their respective owners. While TE has made every reasonable effort to ensure the accuracy of the information in this brochure, TE does not guarantee that it is error-free, nor does TE make any other representation, warranty or guarantee that the information is accurate, correct, reliable or current. TE reserves the right to make any adjustments to the information contained herein at any time without notice. TE expressly disclaims all implied warranties regarding the information contained herein, including, but not limited to, any implied warranties of merchantability or fitness for a particular purpose. The dimensions in this catalog are for reference purposes only and are subject to change without notice. Specifications are subject to change without notice. Consult TE for the latest dimensions and design specifications.

FOR MORE INFORMATION:

TE Customer Support Centers

NSW/QLD/NT/ACT: +61 (2) 9554 2695
VIC/TAS/SA: +61 (3) 9271 5243
WA: +61 (8) 9358 7806
New Zealand: +64 (9) 634 4580