



UTILUX BI-METAL STALK CRIMP LUGS BS TYPE

KEY FEATURES

- Suitable for aluminium to copper terminations
- Friction welded
- Manufactured from high purity copper and aluminium
- Prefilled with jointing compound
- Individually packed in sealed plastic
- Alternative sizes made to order

Utilux is a brand that has built an enviable reputation for high quality, reliable electrical connectors. For over 90 years, this dynamic Australian brand has been a leader in the field of interconnection systems.

Our aim is to provide the best possible products and services to keep our customers at the cutting edge of industry standards - internationally.

You can be sure that Utilux branded products are fabricated from the finest materials and produced to exacting tolerances. They represent the latest technology and the best design for the tasks they are required to perform.

Utilux is a leading brand of electrical connectors sold to original equipment manufacturers and electrical distribution companies throughout Australia, New Zealand and Asia. A comprehensive range, the most up to date production technology and the highest quality control standards ensure that there are Utilux connectors, of optimum reliability and durability, for all major power distribution applications.

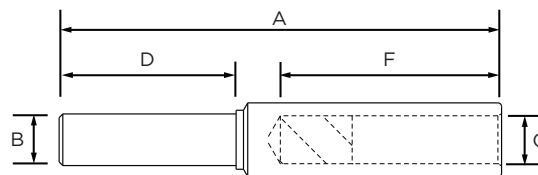
As part of the worlds largest electrical connector company, TE Connectivity, the development of products is an ongoing commitment. It is done on a global basis, utilising the talents of many people throughout the organisation to ensure a global product for a local market.

Customers can count on consistent, high quality products, driven by TE's proven innovation and backed by our extraordinary customer support.

UTILUX BI-METAL STALK CRIMP LUGS



Copper to aluminium terminations can be made with the Utilux range of Bi-Metal products. Under normal conditions, when copper comes into contact with aluminium electrolytic corrosion may result, enhanced by the presence of oxygen. Utilux Bi-metal lugs have the copper friction welded to the aluminium. The friction welding process eliminates the presence of oxygen and therefore eliminates electrolytic corrosion. The welding process also maximises the strength of the joint.



PRODUCT SELECTION INFORMATION

Catalogue Number	Conductor Area (mm ²)	Stranding Metric	Dimensions (mm)					Crimp Die
			A	B	D	F	G	
BS16-12	16	7/1.70	70	12	30	32	5.5	38-90AL
BS25-7	25	19/1.35	70	7	29	32	7	38-90AL
BS25-12	25	19/1.35	70	12	30	32	7	38-90AL
BS35-8	35	19/1.53	70	8	29	32	8.5	38-90AL
BS35-12	35	19/1.53	70	12	30	32	8.5	38-90AL
BS50-12	50	19/1.78	70	12	30	32	9.5	38-132AL
BS70-12	70	19/2.14	70	12	30	32	11	38-132AL
BS95-12	95	37/1.78	110	12	38	60	13	38-173AL, 40-172AL
BS120-12	120	37/2.03	110	12	38	60	15	38-173AL, 40-172AL
BS120-14	120	37/2.03	110	14	38	60	15	38-173AL, 40-172AL
BS150-12	150	37/2.25	120	12	48	60	16.5	38-220AL, 40-220AL
BS150-14	150	37/2.25	120	14	48	60	16.5	38-220AL, 40-220AL
BS150-16	150	37/2.25	120	16	48	60	16.5	38-220AL, 40-220AL
BS185-14.5	185	37/2.25	120	14.5	48	60	18.5	38-220AL, 40-220AL
BS185-16	185	37/2.25	120	16	48	60	18.5	38-220AL, 40-220AL
BS185-18	185	37/2.25	120	18	48	60	18.5	38-220AL, 40-220AL
BS240-16	240	61/2.25	122	16	48	60	21	38-284AL, 40-283AL
BS240-18	240	61/2.25	122	18	48	60	21	38-284AL, 40-283AL
BS300-16	300	61/2.52	122	16	48	60	23.5	38-284AL, 40-283AL
BS300-18	300	61/2.52	122	18	48	60	23.5	38-284AL, 40-283AL
BS400-16	400	61/2.85	153	16	65	70	26.5	40-390AL
BS400-18	400	61/2.85	153	18	65	70	26.5	40-390AL
BS400-20	400	61/2.85	153	20	65	70	26.5	40-390AL
BS500-16	500	61/3.20	153	16	65	70	29.5	40-390AL
BS500-18	500	61/3.20	153	18	65	70	29.5	40-390AL
BS500-20	500	61/3.20	153	20	65	70	29.5	40-390AL
BS630-20	630	127/2.52	160	20	70	70	33.5	40-432AL

te.com/energy

©2016 TE Connectivity Ltd. family of companies. All Rights Reserved. EPP-2487-DDS26-AU-2/16

Utilux, TE Connectivity and TE Connectivity (logo) are trademarks. Other logos, product and/or company names might be trademarks of their respective owners. While TE has made every reasonable effort to ensure the accuracy of the information in this brochure, TE does not guarantee that it is error-free, nor does TE make any other representation, warranty or guarantee that the information is accurate, correct, reliable or current. TE reserves the right to make any adjustments to the information contained herein at any time without notice. TE expressly disclaims all implied warranties regarding the information contained herein, including, but not limited to, any implied warranties of merchantability or fitness for a particular purpose. The dimensions in this catalog are for reference purposes only and are subject to change without notice. Specifications are subject to change without notice. Consult TE for the latest dimensions and design specifications.

FOR MORE INFORMATION:

TE Customer Support Centers

NSW/QLD/NT/ACT:	+61 (2) 9554 2695
VIC/TAS/SA:	+61 (3) 9271 5243
WA:	+61 (8) 9358 7806
New Zealand:	+64 (9) 634 4580