

UTILUX COPPER CRIMP REDUCING LINKS CKR TYPE

KEY FEATURES

- Solid drawn copper rod
- Electro tin plated
- Stock sizes shown
- Custom sizes to order
- Crimp with standard Utilux hex dies

Utilux is a brand that has built an enviable reputation for high quality, reliable electrical connectors. For over 90 years, this dynamic Australian brand has been a leader in the field of interconnection systems.

Our aim is to provide the best possible products and services to keep our customers at the cutting edge of industry standards - internationally.

You can be sure that Utilux branded products are fabricated from the finest materials and produced to exacting tolerances. They represent the latest technology and the best design for the tasks they are required to perform.

Utilux is a leading brand of electrical connectors sold to original equipment manufacturers and electrical distribution companies throughout Australia, New Zealand and Asia. A comprehensive range, the most up to date production technology and the highest quality control standards ensure that there are Utilux connectors, of optimum reliability and durability, for all major power distribution applications.

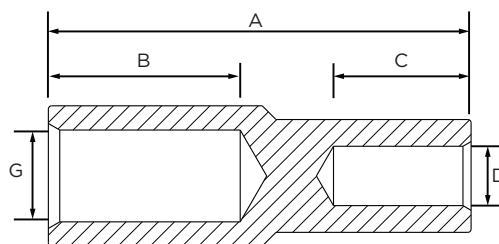
As part of the worlds largest electrical connector company, TE Connectivity, the development of products is an ongoing commitment. It is done on a global basis, utilising the talents of many people throughout the organisation to ensure a global product for a local market.

Customers can count on consistent, high quality products, driven by TE's proven innovation and backed by our extraordinary customer support.

UTILUX COPPER CRIMP REDUCING LINKS



Utilux has engineered the correct combination of material thickness and crimp die selection to ensure that the optimum compression ratios are achieved when crimping. Annealing also ensures that connectors can be crimped without damage and electro tinning minimises corrosion. These features combined with correct termination procedures will ensure a connection that will perform for many years.

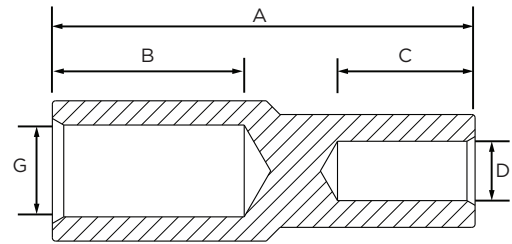


PRODUCT SELECTION INFORMATION								
Catalogue Number	Conductor Area (mm ²)	Large End			Crimping Die	Small End		
		Dimensions (mm)				Dimensions (mm)		Crimping Die
		A	B	G		C	D	
CKR16-6	16 - 6	55	24	5.5	38-63CU	24	3.7	38-44CU
CKR16-10	16 - 10	55	24	5.5	38-63CU	24	4.7	38-57CU
CKR25-6	25 - 6	56	24	7	38-77CU	24	3.7	38-44CU
CKR25-10	25 - 6	56	24	7	38-77CU	24	4.7	38-44CU
CKR25-16	25 - 16	56	24	7	38-77CU	24	5.5	38-63CU
CKR35-10	35 - 10	56	24	8.5	38-92CU	24	4.7	38-57CU
CKR35-16	35 - 16	56	24	8.5	38-92CU	24	5.5	38-63CU
CKR35-25	35 - 25	56	24	8.5	38-92CU	24	7	38-77CU
CKR50-16	50 - 16	58	24	9.4	38-104CU	24	5.5	38-63CU
CKR50-25	50 - 25	58	24	9.4	38-104CU	24	7	38-77CU
CKR50-35	50 - 35	58	24	9.4	38-104CU	24	8.5	38-92CU
CKR70-25	70 - 25	58	24	11	38-115CU	24	7	38-77CU
CKR70-35	70 - 35	58	24	11	38-115CU	24	8.5	38-92CU
CKR70-50	70 - 50	58	24	11	38-115CU	24	9.4	38-104CU
CKR95-25	95 - 25	60	25	13.4	38-142CU	24	7	38-77CU
CKR95-35	95 - 35	60	25	13.4	38-142CU	24	8.5	38-92CU
CKR95-50	95 - 50	60	25	13.4	38-142CU	24	9.4	38-104CU
CKR95-70	95 - 70	60	25	13.4	38-142CU	24	11	38-115CU
CKR120-50	120 - 50	75	38	14.7	38-165U	24	9.4	38-104CU
CKR120-70	120 - 70	75	38	14.7	38-165U	24	11	38-115CU
CKR120-95	120 - 95	75	38	14.7	38-165U	25	13.4	38-142CU
CKR150-35	150 - 35	77	38	16.3	38-183CU	24	8.5	38-92CU
CKR150-70	150 - 70	77	38	16.3	38-183CU	24	11	38-115CU
CKR150-95	150 - 95	77	38	16.3	38-183CU	25	13.4	38-142CU
CKR150-95X03	150 - 95	80	33	16.3	38-183CU	33	13.4	38-142CU

UTILUX COPPER CRIMP REDUCING LINKS



Utilux has engineered the correct combination of material thickness and crimp die selection to ensure that the optimum compression ratios are achieved when crimping. Annealing also ensures that connectors can be crimped without damage and electro tinning minimises corrosion. These features combined with correct termination procedures will ensure a connection that will perform for many years.



PRODUCT SELECTION INFORMATION

Catalogue Number	Conductor Area (mm ²)	Large End			Small End			
		Dimensions (mm)			Crimping Die	Dimensions (mm)		Crimping Die
		A	B	G		C	D	
CKR150-120	150 - 120	90	38	16.3	38-183CU	38	14.7	38-165U
CKR185-65	185 - 65	90	38	18.4	38-200CU	38	11	38-115CU
CKR185-70	185 - 70	77	38	18.4	38-200CU	24	11	38-115CU
CKR185-95	185 - 95	77	38	18.4	38-200CU	25	13.4	38-142CU
CKR185-120	185 - 120	90	38	18.4	38-200CU	38	14.7	38-165U
CKR185-150	185 - 150	90	38	18.4	38-200CU	38	16.3	38-183CU
CKR185-161	185 - 161	90	38	18.4	38-200CU	38	17	40-185CU
CKR210-105	210 - 105	100	42	20	38-231CU, 40-231CU	42	14	38-183CU, 40-185CU
CKR240-120	240 - 120	98	42	21.1	38-231CU, 40-231CU	38	14.7	38-165U
CKR240-150	240 - 150	98	42	21.1	38-231CU, 40-231CU	38	16.3	38-183CU
CKR240-185	240 - 185	98	42	21.1	38-231CU, 40-231CU	38	18.4	38-200CU
CKR300-150	300 - 150	98	42	23.4	38-260CU, 40-260CU	38	16.3	38-183CU
CKR300-185	300 - 185	98	42	23.4	38-260CU, 40-260CU	38	18.4	38-200CU
CKR300-240	300 - 240	101	42	23.4	38-260CU, 40-260CU	42	21.1	38-231CU, 40-231CU
CKR630-161	630 - 161	122	59	33.4	40-370CU	38	16.9	40-185CU
CKR630-400	630 - 400	143	59	33.4	40-370CU	59	26.9	40-281CU
CKR800-630	800 - 630	185	90	39	40-432CU	60	33.5	40-370CU

te.com/energy

©2016 TE Connectivity Ltd. family of companies. All Rights Reserved. EPP-2487-DDS11-AU-3/16

Utilux, TE Connectivity and TE Connectivity (logo) are trademarks. Other logos, product and/or company names might be trademarks of their respective owners. While TE has made every reasonable effort to ensure the accuracy of the information in this brochure, TE does not guarantee that it is error-free, nor does TE make any other representation, warranty or guarantee that the information is accurate, correct, reliable or current. TE reserves the right to make any adjustments to the information contained herein at any time without notice. TE expressly disclaims all implied warranties regarding the information contained herein, including, but not limited to, any implied warranties of merchantability or fitness for a particular purpose. The dimensions in this catalog are for reference purposes only and are subject to change without notice. Specifications are subject to change without notice. Consult TE for the latest dimensions and design specifications.

FOR MORE INFORMATION: TE Customer Support Centers

NSW/QLD/NT/ACT: +61 (2) 9554 2695
 VIC/TAS/SA: +61 (3) 9271 5243
 WA: +61 (8) 9358 7806
 New Zealand: +64 (9) 634 4580