

## COPPER TUBULAR TERMINALS

### XCT TYPE

#### KEY FEATURES

- A full range for cross sections conductors from 1,5 mm<sup>2</sup> to 630 mm<sup>2</sup>
- Inspection hole on the barrel of the terminal allows for quick control when the conductor is well positioned
- Crimping by hexagonal compression or indent
- Can be crimped with a variety of tools

TE Connectivity's (TE) XCT tubular terminals are ideally suited to connect electrical copper conductors to equipment terminals.

XCT terminals are made of highly conductive electrolytic copper with a bright tin finish. It offers outstanding resistance to oxidation and corrosion, and allows for quick identification, easy installation and checking.

Designs include ring tongue terminals, right angle, compact narrow tongue terminals, and sleeves.

These terminals comply with NF C 20 130 French standard. While using the terminals with flexible conductors, it is necessary to use a section that is just above or the next largest section. For example: for a flexible conductor at 35 mm<sup>2</sup>, use the lug with marking at 50 mm<sup>2</sup>.

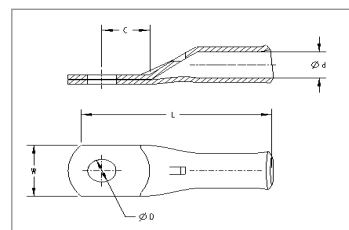
**Customers can count on consistent, high quality products, driven by TE's proven innovation and backed by our extraordinary customer support.**

## Copper Tubular Terminals XCT Type



### PRODUCT SELECTION INFORMATION

Description	Dimensions					Weight (g)	Standard Pack	Part Number
	ØD	W	Ød	C	L			
XCT Tongue Terminals								
XCT 1,5-3	3.2	6	1.8	3.25	17	0.7	100	710971-1
XCT 1,5-4	4.3	6.5	1.8	4	17	0.9	100	710972-1
XCT 1,5-5*	5.3	7.5	1.8	4.75	18	0.9	100	710973-1
XCT 1,5-6*	6.4	9	1.8	6.5	19	1	100	711674-1
XCT 2,5-4	4.3	8	2.2	4.5	18	1.3	100	710974-1
XCT 2,5-5	5.3	8.5	2.2	5	19	1.3	100	710975-1
XCT 2,5-6*	6.4	9	2.2	6.5	20	1.5	100	710976-1
XCT 4-4	4.3	9	2.7	4.75	21	2.4	100	710977-1
XCT 4-5	5.3	9	2.7	4.75	24	2.6	50	710978-1
XCT 4-6	6.4	12	2.7	6.5	25	2.7	50	710979-1
XCT 6-4	4.2	10	3.3	7	31	4.3	100	710032-1
XCT 6-5	5.2	10	3.3	7	31	4.3	100	710032-2
XCT 6-6	6.4	13	3.3	7	31	4.4	100	710032-4
XCT 6-8	8.3	13	3.3	9	35	4.5	100	710032-6
XCT 10-4*	4.2	11	4.2	7	33	6	100	710031-1
XCT 10-5	5.2	11	4.2	7	33	6.5	100	710031-2
XCT 10-6	6.4	11	4.2	7	33	6.5	100	710031-4
XCT 10-8	8.3	14	4.2	10	38	7.4	100	710031-6
XCT 10-10	10.3	14	4.2	10	38	7.5	100	710031-8
XCT 16-5	5.2	12	5.3	7	33.5	8.6	100	710030-1
XCT 16-6	6.4	12	5.3	7	33.5	8.7	100	710030-3
XCT 16-8	8.3	16	5.3	9	39	9.2	100	710030-5
XCT 16-10	10.3	16	5.3	11	43	9.9	100	710030-7
XCT 16-12*	12.8	16	5.3	11	43	9.4	100	710030-8
XCT 25-5*	5.2	13	6.6	7	35	10.8	100	710026-1
XCT 25-6	6.4	13	6.6	7	35	11	100	710026-3
XCT 25-8	8.3	16	6.6	9	40	11.7	100	710026-5
XCT 25-10	10.3	16	6.6	11	44	11.6	100	710026-7
XCT 25-12*	12.2	16	6.6	11	44	12	100	710026-8
XCT 35-6	6.4	15	7.9	7	39	14	50	710027-1
XCT 35-8	8.3	17	7.9	11	46	15	50	710027-2
XCT 35-10	10.3	17	7.9	11	46	17.1	50	710036-3
XCT 35-12*	12.8	17	7.9	11	46	15.4	50	710036-4
XCT 50-6*	6.4	18	9.2	13.5	53	20	25	710025-3
XCT 50-8	8.3	18	9.2	13.5	53	26	25	710025-2
XCT 50-10	10.3	18	9.2	13.5	53	30	25	710025-5
XCT 50-12	12.8	19	9.2	13.5	53	23	25	710025-7
XCT 60-8*	8.3	19	10.5	11.3	52.5	21.8	25	709817-1
XCT 60-10	10.3	19	10.5	11.3	52.5	20.2	25	709817-2
XCT 60-12	12.8	19	10.5	13.8	52.5	20	25	709817-3
XCT 70-8	8.3	21	11	13.5	58	39.6	25	710028-1
XCT 70-10	10.3	21	11	13.5	58	37.4	25	710028-3
XCT 70-12	12.8	21	11	13.5	58	37.6	25	710028-5
XCT 70-16*	16.5	21	11	16.5	60.5	36.2	25	710028-8
XCT 95-8	8.3	23	13.1	16.3	70	58.8	25	709819-1
XCT 95-10	10.3	23	13.1	16.3	70	57.2	25	709819-3
XCT 95-12	12.8	23	13.1	16.3	70	56	25	709819-5
XCT 95-14	14.5	23	13.1	16.3	70	54.8	25	709819-7
XCT 95-16	16.5	23	13.1	16.3	70	52.9	25	709819-8
XCT 120-10	10.3	28	14.5	16.3	76	81.2	25	709820-1
XCT 120-12	12.8	28	14.5	16.3	76	78.8	25	709820-3
XCT 120-14	14.5	28	14.5	16.3	76	77.2	25	709820-4
XCT 120-16	16.5	28	14.5	16.3	76	75.8	25	709820-6
XCT 150-10	10.3	30	16.2	16.3	81.5	103.5	10	709821-2
XCT 150-12	12.8	30	16.2	16.3	81.5	100.5	10	709821-3
XCT 150-14	14.5	30	16.2	16.3	81.5	98.5	10	709821-4
XCT 150-16	16.5	30	16.2	16.3	81.5	96.5	10	709821-5
XCT 185-12	12.8	33	18	16.3	88	124.5	10	709822-2
XCT 185-14	14.5	33	18	16.3	88	123	10	709822-3
XCT 185-16	16.5	33	18	16.3	88	120	10	709822-4
XCT 240-10	10.3	37	20.6	19.3	98.5	170	10	709823-1
XCT 240-12	12.8	37	20.6	19.3	98.5	170	10	709823-2
XCT 240-14	14.5	37	20.6	19.3	98.5	173.5	10	709823-3
XCT 240-16	16.5	37	20.6	19.3	98.5	172	10	709823-4
XCT 240-20	21	37	20.6	19.3	98.5	159	10	709823-5
XCT 300-14	14.5	41	23.1	21	102.5	175	10	709818-1
XCT 300-16	16.5	41	23.1	21	102.5	173	10	709818-3
XCT 300-20	21	41	23.1	21	102.5	167	10	709818-4
XCT 400-16	16.5	47	26	22	120	280	3	709887-1
XDT 500 60x56 NP*	-	55	29.2	-	145	736	-	708370-1
XDT 630 60x61 NP*	-	60	33.2	-	150	730	-	708371-1



(\*) Palm sizes do not comply with NFC 20-130  
 (\*\*) Terminal does not comply with NFC 20-130  
 NP: without hole - Hole to be done on request

[te.com/energy](http://te.com/energy)

©2019 TE Connectivity Ltd. family of companies. All Rights Reserved. EPP-2322-DDS-10/19-EN-EMEA-XCT-TE

TE Connectivity and TE Connectivity (logo) are trademarks. Other logos, product and/or company names might be trademarks of their respective owners. While TE has made every reasonable effort to ensure the accuracy of the information in this brochure, TE does not guarantee that it is error-free, nor does TE make any other representation, warranty or guarantee that the information is accurate, correct, reliable or current. TE reserves the right to make any adjustments to the information contained herein at any time without notice. TE expressly disclaims all implied warranties regarding the information contained herein, including, but not limited to, any implied warranties of merchantability or fitness for a particular purpose. The dimensions in this catalog are for reference purposes only and are subject to change without notice. Specifications are subject to change without notice. Consult TE for the latest dimensions and design specifications.

### FOR MORE INFORMATION: TE Technical Support Centers

USA: + 1 800 327 6996  
 France: + 33 380 583 200  
 UK: + 44 0870 870 7500  
 Germany: + 49 896 089 903  
 Spain: + 34 916 630 400  
 Italy: + 39 333 250 0915  
 Benelux: + 32 16 351 731  
 Canada: + 1 (905) 475-6222  
 Mexico: + 52 (0) 55-1106-0800  
 Latin/S. America: + 54 (0) 11-4733-2200  
 China: + 86 (0) 400-820-6015