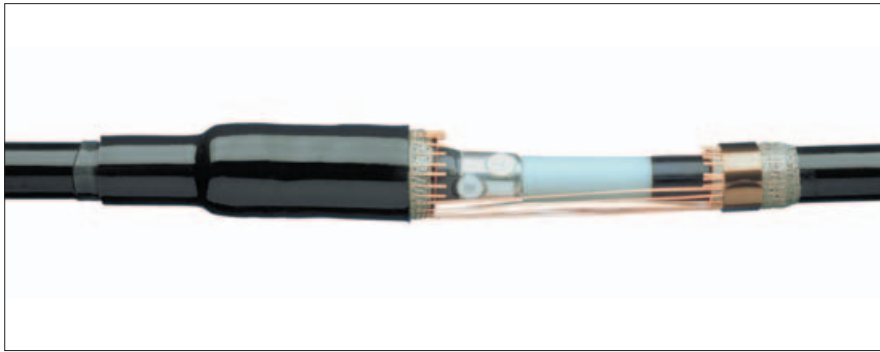
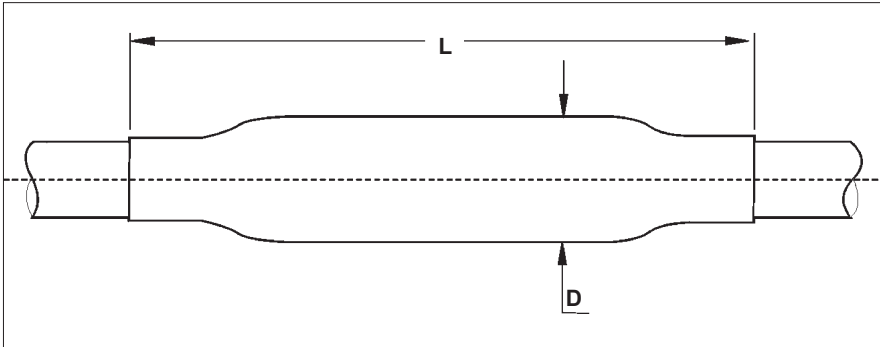


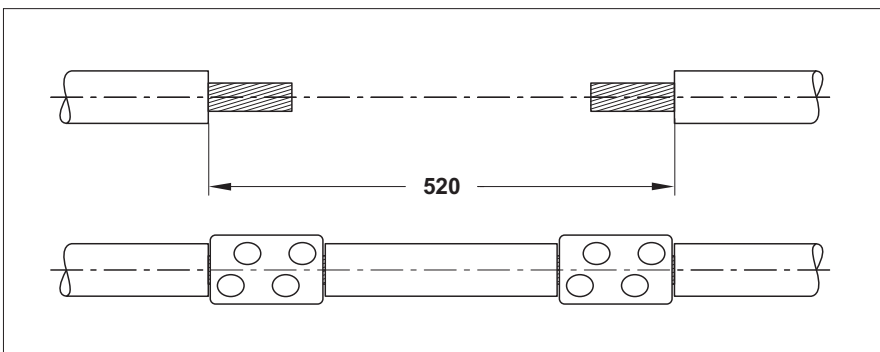
## Joins and repair joints for screened, 1-core polymeric insulated cables 10 kV, 15 kV, 20 kV and 35 kV



Joint



Dimensions L, D see table



Repair joint

### Cable

The joints are designed 10 kV, 15 kV, 20 kV and 35 kV screened one core polymeric insulated cables.

For example: A2YSb(r)Y, A2YSY, ПвП, АПвП, ВПвП, УНАКXS, ХУНАКXS, ХУНКС, АХЕКVCEY, СХЕКVCEY, N(A)2XS, SAXKA, DISTRI, XHE 49(A), XHP 48(A), EHP 48(A), N(A)2XS(F)2Y, АНХАМК-W, NFC 33-223.

### Design of joints with mechanical connectors

#### For cables with wire or tape screen

At the screen end yellow void filling mastic is applied and the cable end is covered with a heat-shrinkable stress control tubing. The conductors are jointed with a mechanical connector supplied with the joint. The connection area is covered with a stress control patch. Heat-shrinkable triple-extruded elastomeric joint body provides the correct thickness

of insulation and the screening over the insulation. Copper mesh wrapped around the joint area rebuilds the metallic screen. For cables with wire screen an earth connection system is supplied with the kit. For cables with tape screen the joint includes a solderless earth connection system which is also suitable for cables with aluminium laminate (e.g. type АНХАМК-W). The outer sealing and protection is performed by an adhesive coated, thick-wall, heat-shrinkable tubing.

#### For cables with aluminium wire screen

The inner components of the cable up to the bedding are rebuilt as for cables with wire or tape screen. The aluminium wires are connected with mechanical connectors and covered with metal tape. The outer sealing and protection is performed by an adhesive coated, thick-wall, heat-shrinkable tubing.

### Design of joints without connectors

#### For cables with wire or tape screen

At the screen end and over the connector yellow, void filling mastic is applied. The entire joint area is covered with heat-shrinkable stress control tubing. Heat-shrinkable triple-extruded elastomeric joint body provides the correct thickness of insulation and the screening over the insulation. Copper mesh wrapped around the joint area rebuilds the metallic screen. For cables with tape screen the joint includes a solderless earth connection system which is also suitable for cables with aluminium laminate (e.g. type АНХАМК-W). The outer sealing and protection is performed by adhesive coated, thick-wall heat-shrinkable tubing.

#### Design of repair joints

The design and components of the repair joint and the inline joint are similar. The longer length of the repair joint allows cut the damaged part out of the cable and replace it by a piece of cable core and two connectors. This allows repairing the cable for a length of up to 520 mm (10 kV and 20 kV) or 420 mm (35 kV).

# Joins and repair joints for screened, 1-core polymeric insulated cables 10 kV, 15 kV, 20 kV and 35 kV

## Joins including mechanical connectors

For cables with wire or metal tape screen

Nominal voltage U <sub>0</sub> /U (kV)	Cross section (mm <sup>2</sup> )	Ordering description for cables		Dimensions (mm)	
		with wire shield	with tape or wire shield *	L	D
6/10	25– 70	POLJ-12/1x 25- 70	POLJ-12/1x 25- 70-CEE01	550	45
	70–150	POLJ-12/1x 70-150	POLJ-12/1x 70-150-CEE01	550	55
	120–240	POLJ-12/1x120-240	POLJ-12/1x120-240-CEE01	550	65
	240–400	POLJ-12/1x240-400	–	650	75
	500	POLJ-12/1x500	–	700	85
	630	POLJ-12/1x630	–	700	85
8,7/15 and 12/20	800	POLJ-12/1x800	–	700	90
	25– 70	POLJ-24/1x 25- 70	POLJ-24/1x 25- 70-CEE01	550	55
	70–150	POLJ-24/1x 70-150	POLJ-24/1x 70-150-CEE01	600	65
	120–240	POLJ-24/1x120-240	POLJ-24/1x120-240-CEE01	600	70
	240–400	POLJ-24/1x240-400	–	650	80
	500	POLJ-24/1x500	–	800	90
20/35	630	POLJ-24/1x630	–	800	90
	35– 70	POLJ-42/1x 35- 70	POLJ-42/1x 35- 70-CEE01	750	65
	70–120	POLJ-42/1x 70-120	POLJ-42/1x 70-120-CEE01	750	70
	120–240	POLJ-42/1x120-240	POLJ-42/1x120-240-CEE01	750	75
	300–400	POLJ-42/1x300-400	–	800	85
	500	POLJ-42/1x500	–	900	95
	630	POLJ-42/1x630	–	900	95

\* The joints are designed for cables with copper tape shield or with aluminium laminate (e.g. type AHXAMK-W) and can also be used for cables with wire shields. For transitions of cables with wire shield to cables with Al-laminate use joints for cables with wire shield.

## For cables with aluminium wire armour and wire or tape screen

Nominal voltage U <sub>0</sub> /U (kV)	Cross section (mm <sup>2</sup> )	Ordering description	Dimensions (mm)	
			L	D
6/10	25– 70	POLJ-12/1x 25- 70-AW	850	50
	70–150	POLJ-12/1x 70-150-AW	850	60
	120–240	POLJ-12/1x120-240-AW	900	70
8,7/15 and 12/20	25– 70	POLJ-24/1x 25- 70-AW	900	60
	70–150	POLJ-24/1x 70-150-AW	900	70
	120–240	POLJ-24/1x120-240-AW	900	75
20/35	70–120	POLJ-42/1x 70-120-AW	1250	75
	120–240	POLJ-42/1x120-240-AW	1250	80

## Repair Joint for cables with wire or tape screen

Nominal voltage U <sub>0</sub> /U (kV)	Cross section (mm <sup>2</sup> )			Ordering description	Max. repair length (mm)	Dimensions (mm)	
	(mm <sup>2</sup> )	(mm <sup>2</sup> )	(mm <sup>2</sup> )			L	D
6/10, 8,7/15 and 12/20	6/10 kV	8,7/15 kV	12/20 kV				
	25– 70	25– 70	25– 70	REPJ-24/1x 25- 70	520	1200	50
	95–150	70–150	70–120	REPJ-24/1x 70-150	520	1200	55
	150–240	120–240	120–240	REPJ-24/1x120-240	520	1200	70
20/35	70–120			REPJ-42/1x 70-120	420	1200	55
	120–240			REPJ-42/1x120-240	420	1200	70

## Joins without connectors for cables with wire or tape screen

Nominal voltage U <sub>0</sub> /U (kV)	Cross section (mm <sup>2</sup> )		Ordering description for cables with wire shield	Ordering description for cables with metal tape shield *	Dimensions (mm)	
	(mm <sup>2</sup> )	(mm <sup>2</sup> )			L	D
6/10 and 8,7/15	6/10 kV	8,7/15 kV				
	50– 70	35– 50	SXSU-4111	SXSU-4111-CEE01	550	45
	95– 185	70– 120	SXSU-4121	SXSU-4121-CEE01	600	55
	185– 300	150–240	SXSU-4131	SXSU-4131-CEE01	650	65
	400– 630	300–500	SXSU-4141	SXSU-4141-CEE01	750	75
	800–1200	630–800	SXSU-4151		750	85
12/20	25– 95		SXSU-5121	SXSU-5121-CEE01	600	60
	95– 240		SXSU-5131	SXSU-5131-CEE01	650	70
	240– 500		SXSU-5141		750	80
	630– 800		SXSU-5151		750	85
20/35	35– 150		SXSU-6122		850	65
	150– 300		SXSU-6132		850	70
	400– 630		SXSU-6142		950	80

\* The joints are designed for cables with copper tape shield or with aluminium laminate (e.g. type AHXAMK-W).

Joins for other cable types, cross sections or voltage classes are available on request.

Joins for 1-core cables include material for 1 phase.