

**DWP-125
FLAME-RETARDANT, DUAL WALL POLYOLEFIN
HEAT-SHRINKABLE TUBING**

REVISIONS					
P	LTR	DESCRIPTION	DATE	DWN	APVD
	D2	REDRAWN PER ECR-22-158635	18NOV2022	VB	MB

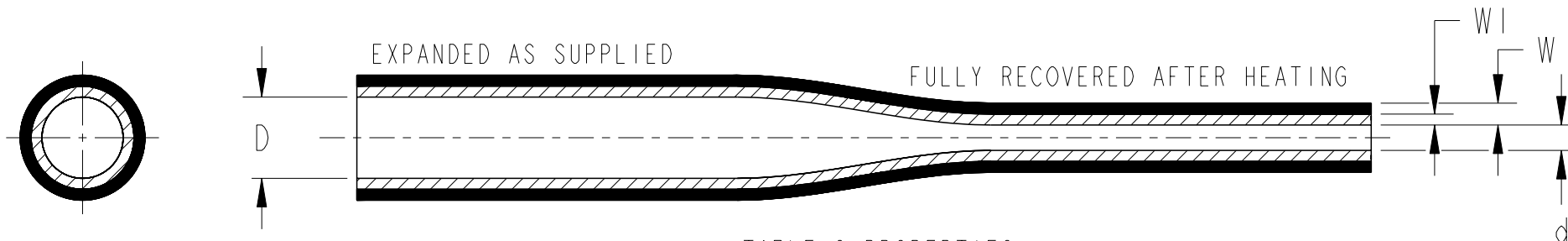


TABLE 1: DIMENSIONS

SIZE	MINIMUM EXPANSION (D)		MAXIMUM RECOVERED (d)		NOMINAL TOTAL RECOVERED WALL (W)		NOMINAL ADHESIVE (Wl)	
	mm.	in.	mm.	in.	mm.	in.	mm.	in.
1/8	3.18	.125	1.02	.040	1.07	.042	0.18	.007
3/16	4.75	.187	1.52	.060	1.32	.052	0.43	.017
1/4	6.35	.250	2.03	.080	1.45	.057	0.56	.022
3/8	9.53	.375	3.05	.120	1.65	.065	0.69	.027
1/2	12.70	.500	3.99	.157	1.70	.067	0.69	.027
3/4	19.05	.750	5.84	.230	2.03	.080	0.76	.030
1	25.40	1.000	8.13	.320	2.54	.100	0.76	.030
1-1/2	38.10	1.500	13.46	.530	2.54	.100	0.76	.030
2	50.80	2.000	20.32	.800	2.54	.100	0.76	.030

TABLE 2: PROPERTIES

PROPERTY	UNIT	REQUIREMENT		TEST METHOD
		TYPE 1	TYPE 2	
DIMENSIONS	mm/INCH	TABLE 1	TABLE 1	ASTM D 2671
TENSILE STRENGTH, MINIMUM	PSI	1500	1500	ASTM D 2671 20 Inches/Minute
ELONGATION, MINIMUM	PERCENT	200	200	ASTM D 2671 20 Inches/Minute
LONGITUDINAL CHANGE, MAXIMUM	PERCENT	0, -10	0, -10	ASTM D 2671
HEAT SHOCK 4 HOURS AT 250°C	--	NO DRIPPING, FLOWING OR CRACKING. NOTE 1	NO DRIPPING OR FLOWING. NOTE 1	ASTM D 2671
FLAMMABILITY (TYPE 1 ONLY)	--	PASS	N/A*	UL-224 ALL TUBING

TYPE 1 BLACK, WHITE AND COLORS
TYPE 2 CLEAR (*NOTE: TYPE 2 IS NOT FLAME-RETARDANT.)

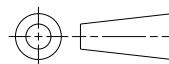
NOTE 1: THIS REQUIREMENT APPLIES TO THE OUTER JACKET ONLY.
IN ADDITION TO THE ABOVE REQUIREMENTS, DWP-125 TYPE 1 IS UL RECOGNIZED AND CSA CERTIFIED AND SHALL MEET ALL THE REQUIREMENTS OF UL-224 FOR 125°C-RATED FLEXIBLE POLYOLEFIN TUBING, CSA C22.2 NO. 198.1-M1986 FOR 125°C-RATED FLEXIBLE POLYOLEFIN WITH MELTABLE LINER.

TUBING CUT TO SPECIFIC LENGTHS CAN BE SUPPLIED FROM THE PRODUCT SIZES REFERENCED WITHIN THIS DRAWING.

STANDARD CUTTING TOLERANCES (mm)	
CUT LENGTH	TOLERANCE
Up to 9.90mm	±1.50mm
10mm to 24.90mm	±1.50mm
25mm to 54.90mm	±1.50mm
55mm to 99.90mm	±3.00mm
100mm to 149.90mm	±4.00mm
150mm to 499.90mm	±5.00mm
500mm AND GREATER	±25.40mm

THIS DRAWING IS A CONTROLLED DOCUMENT.

DIMENSIONS:
mm (Inches)



TOLERANCES UNLESS OTHERWISE SPECIFIED:
0 PLC ±.
1 PLC ±0.1
2 PLC ±0.01
3 PLC ±0.001
4 PLC ±0.0001
ANGLES ±.
FINISH -

MATERIAL
SEE NOTE

DWN 18NOV2022
BASAVARAJA D A

CHK 18NOV2022
SELVAPANDIAN B

APVD 18NOV2022
MAYO BAKARE

PRODUCT SPEC

APPLICATION SPEC

WEIGHT -

CUSTOMER DRAWING



NAME
DWP-125
FLAME-RETARDANT, DUAL WALL POLYOLEFIN
HEAT-SHRINKABLE TUBING

SIZE CAGE CODE DRAWING NO RESTRICTED TO

A3 - C=DWP-125 -

SCALE NTS SHEET 1 OF 1 REV D2

Printed on 27 Mar 2023 10:23 (India Standard Time) from TE255172