

NOTES

1. DIMENSIONS ARE FOR REFERENCE ONLY.

2. PART NUMBER & BATCH NUMBER EXAMPLE :-

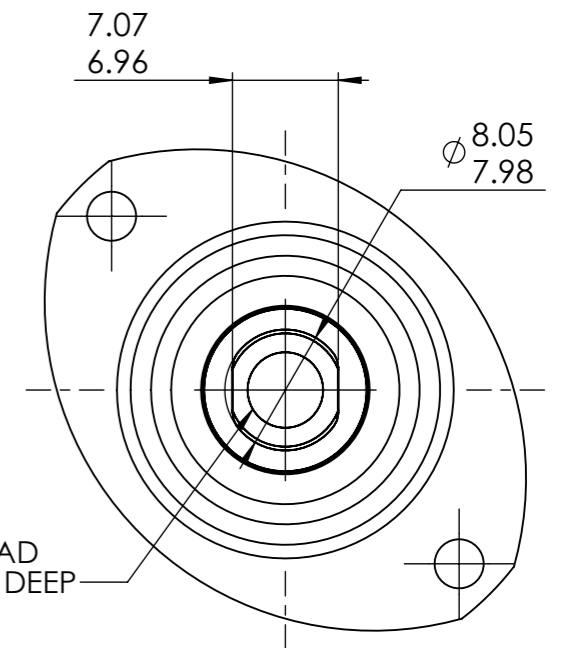
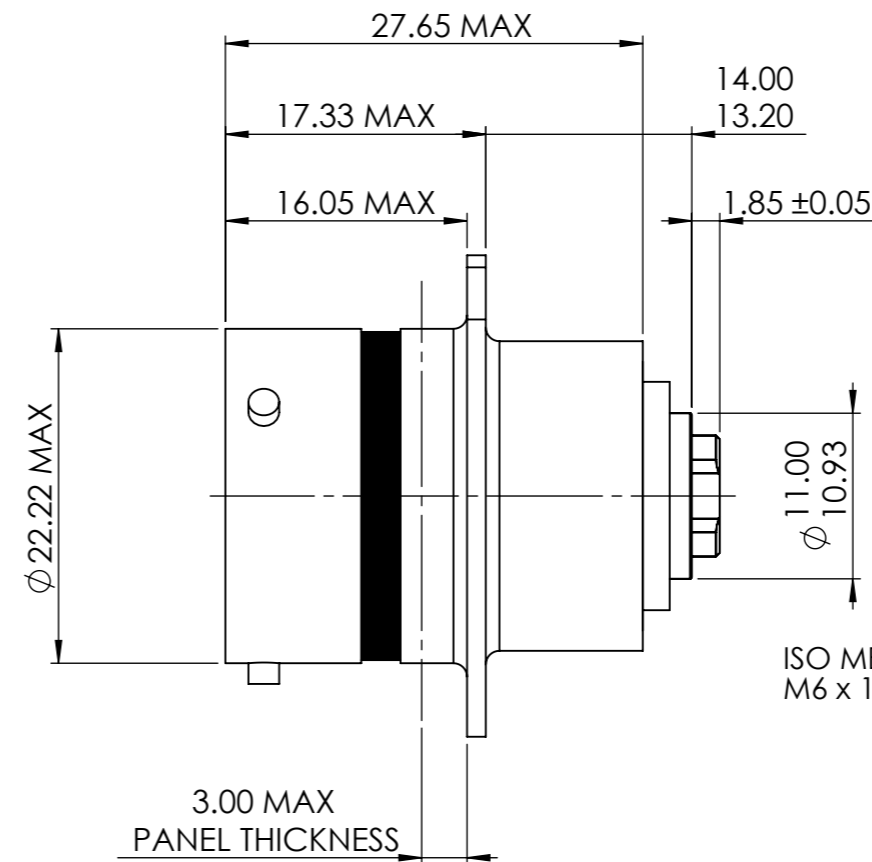
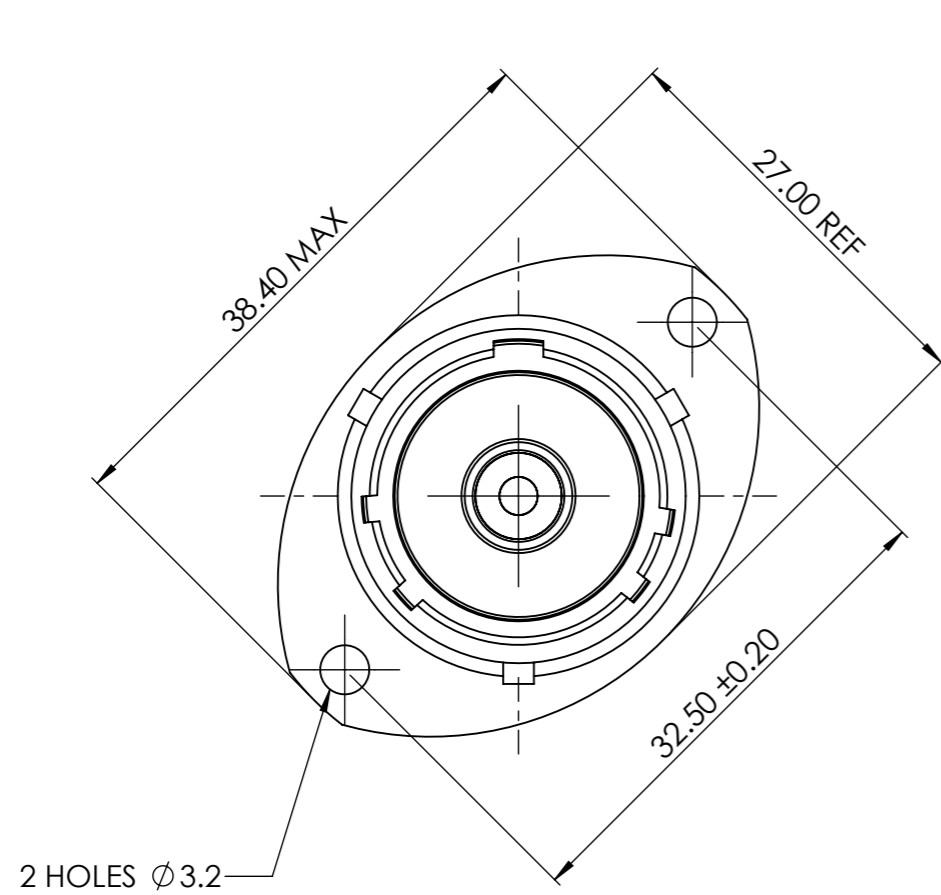
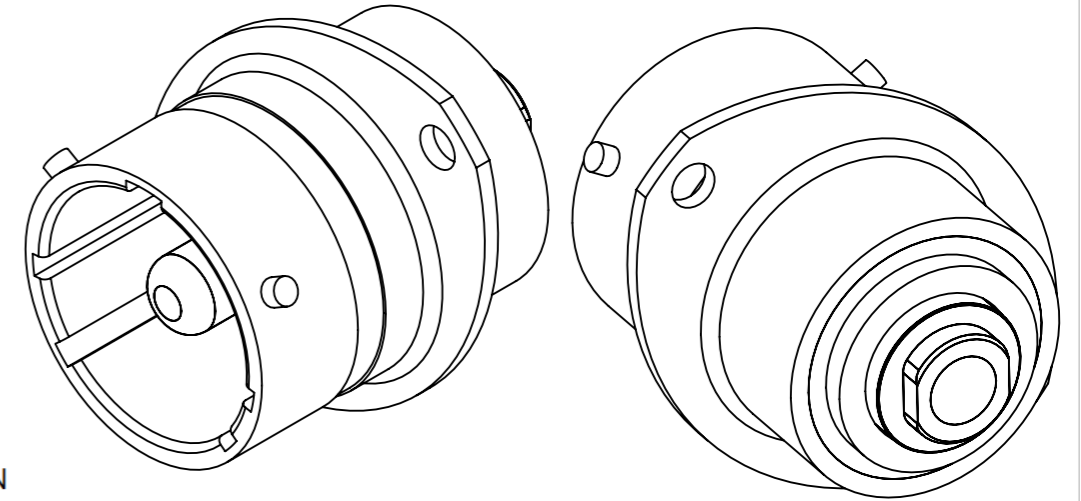
DEUTSCH ASHD214-1PN-974C RP654321

BASIC NUMBER
SHELL SIZE


BATCH NUMBER
MODIFICATION CODE

CONTACT TYPE & ORIENTATION

3. CONTACT IS NON-REMOVABLE.



ISO METRIC THREAD
M6 x 1.00 x 11.00 DEEP

							MATERIAL	© THE COPYRIGHT OF THIS DRAWING IS RESERVED BY DEUTSCH UK. IT IS ISSUED ON CONDITION THAT IT IS NOT COPIED, REPRODUCED OR DISCLOSED TO A THIRD PARTY EITHER WHOLLY OR IN PART WITHOUT THE CONSENT IN WRITING OF DEUTSCH UK.		GENERAL TOLERANCES UNLESS OTHERWISE STATED. ±0.4mm ON WHOLE NUMBERS ±0.2mm ON ONE PLACE DECIMALS ±0.1mm ON TWO PLACE DECIMALS ±1/2° ON ANGLES ±0.05mm ON DRILLED HOLES ALL DIAMETERS $\text{H}0.10$		 ST LEONARDS ON SEA, EAST SUSSEX, TN38 9RF TEL. +44 (0)1424 852721	
							HEAT TREATMENT & FINISH			TITLE		DRAWING NUMBER	
							PACKAGING			RECEIPT ASSY.ASHD. PCB MOUNT.MOD CODE 974C. ENVELOPE DETAILS		610591-ENV	
B	53698	NDL	JAK	JAK	IKG	30/01/07	APP. I.E.D.	----	SCALE	2:1	DIMENSIONS IN MILLIMETRES UNLESS OTHERWISE STATED		
A	53615	NDL	JAK	JAK	IKG	24/01/07							
ISSUE	CHANGE NOTE	DRAWN	CHECKED	APP. ENG.	APP. MARKETING	DATE							