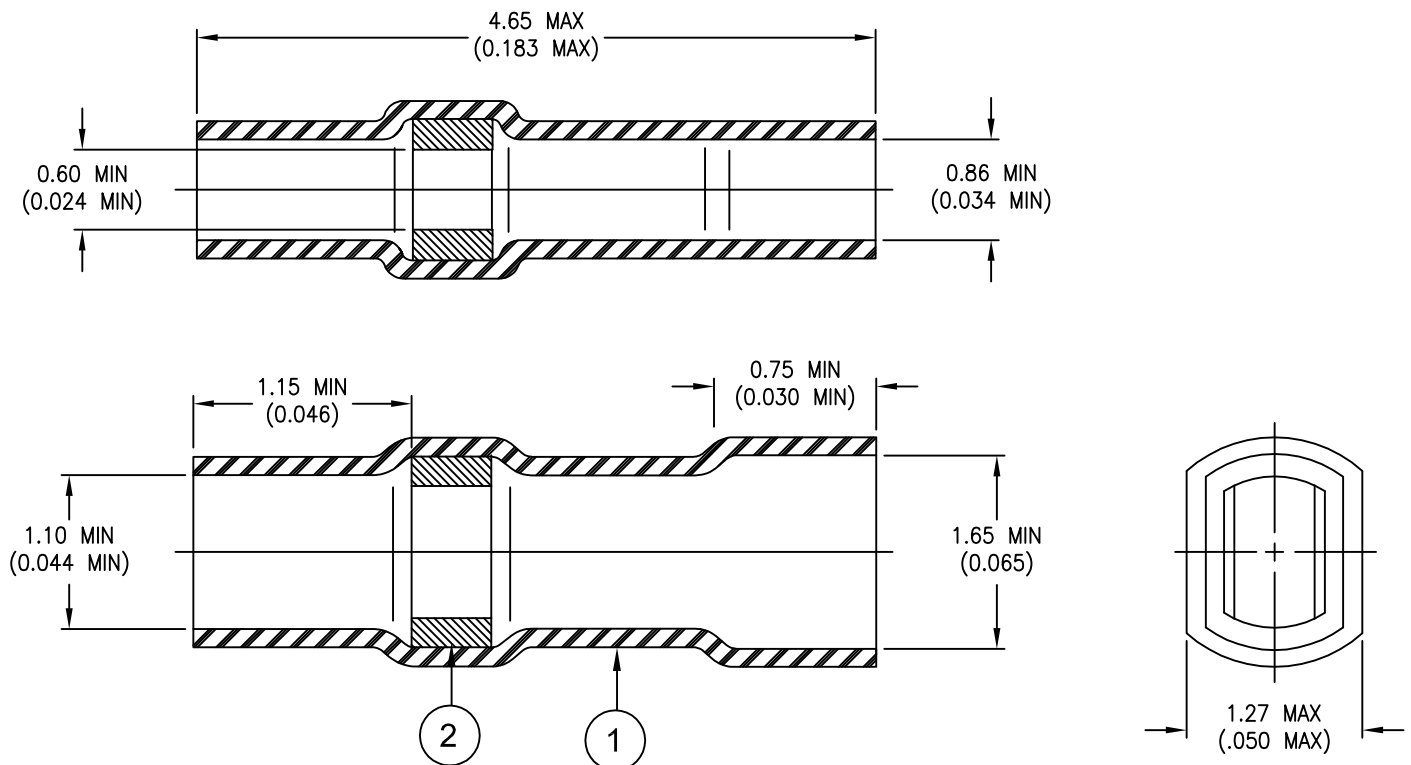


CUSTOMER DRAWING



MATERIALS

1. INSULATION SLEEVE: Heat shrinkable, transparent blue, radiation cross-linked polyvinylidene fluoride.
2. SOLDER PERFROM WITH FLUX.
 SOLDER: TYPE Sn96 per ANSI J-STD-006.
 FLUX: TYPE ROL1 per ANSI J-STD-004.

APPLICATION

1. This product is designed to use on CTM 1050 and CTM-1052
2. This drawing forms part of Raychem Specification Control Drawing D-700-0040
3. This product will terminated per ES-71065

If this document is printed it becomes uncontrolled. Check for the latest revision

© 2008 Tyco Electronics Corporation. All Rights Reserved.



Tyco Electronics
 305 Constitution Dr
 Menlo Park, CA 94025, U.S.A

TITLE: **SOLDERSLEEVES**

Unless otherwise specified, dimensions are in millimeters. [Inches dimensions are shown in brackets]

**Raychem
 Devices**

DOCUMENT NUMBER: **D-141-0226**

TOLERANCES:
 0.00 N/A
 0.0 N/A
 0 N/A

ANGLES: N/A
 ROUGHNESS IN
 MICRON

Tyco Electronics reserves the right to amend this drawing at any time. Users should evaluate the suitability of the product for their application.

REV: **A**

DATE: **06-AUG-08**

DRAWN BY: **A. BUI**

CAGE CODE: **06090**

REPLACES: **-----**

ECO NUMBER: **08-019937**

SCALE: **NONE**

SIZE: **A**

SHEET: **1 OF 1**